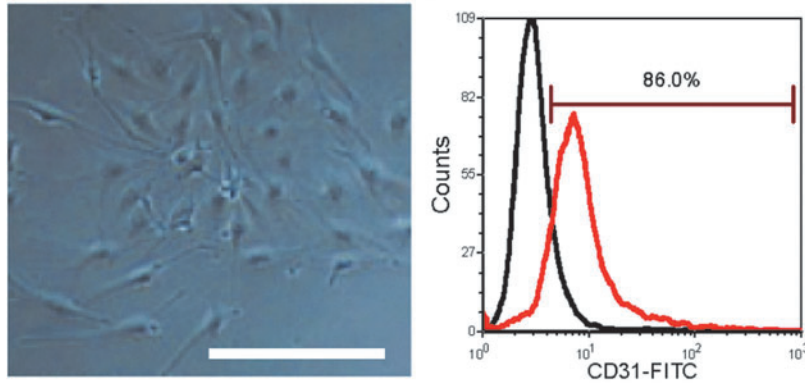
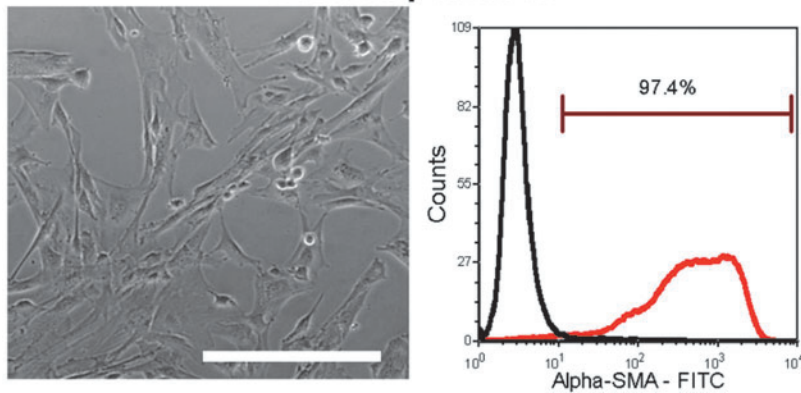


### Isolated psvECs



### Isolated pcaSMCs



**SUPPLEMENTARY FIG. S2.** Characteristics of isolated primary psvECs and pcaSMCs. Isolated primary psvECs and pcaSMCs displayed characteristic tissue culture plate morphologies, indicating lineage commitment, as imaged through phase-contrast microscopy. Flow cytometry quantified at least 80% lineage integrity, by characteristic markers, in each culture (CD31 for ECs; smooth muscle actin for SMCs), as indicated. ECs, endothelial cells; pcaSMCs, porcine carotid artery SMCs; psvECs, porcine saphenous vein ECs; SMCs, smooth muscle cells.