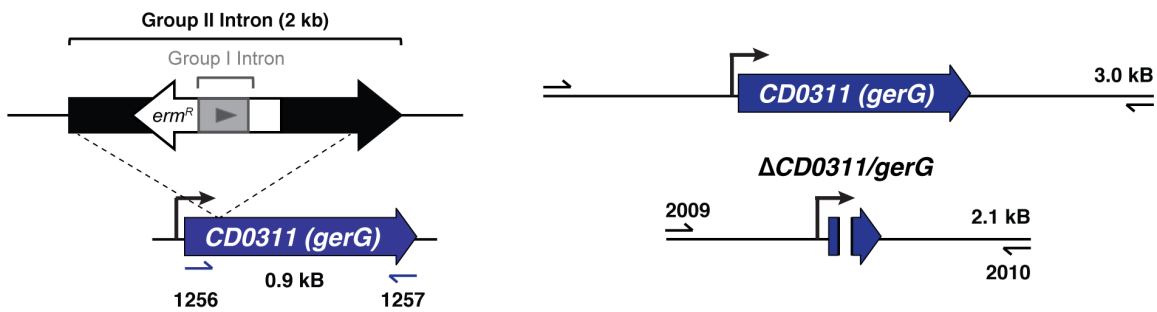
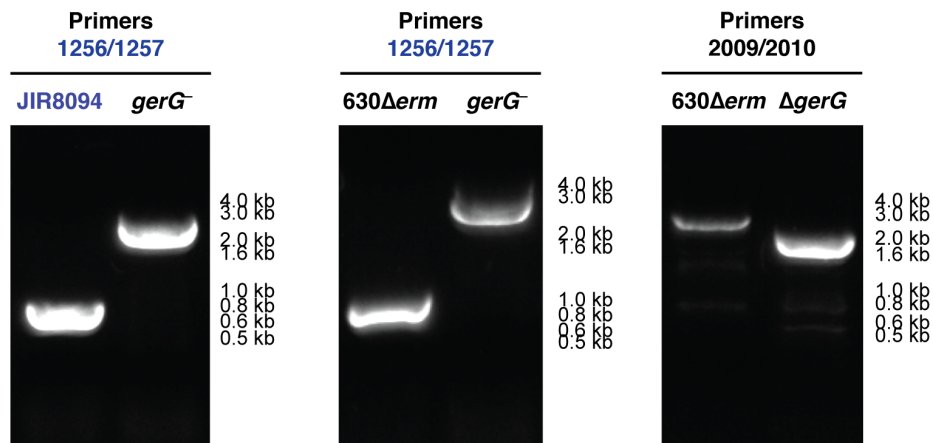


A.



B.



C.

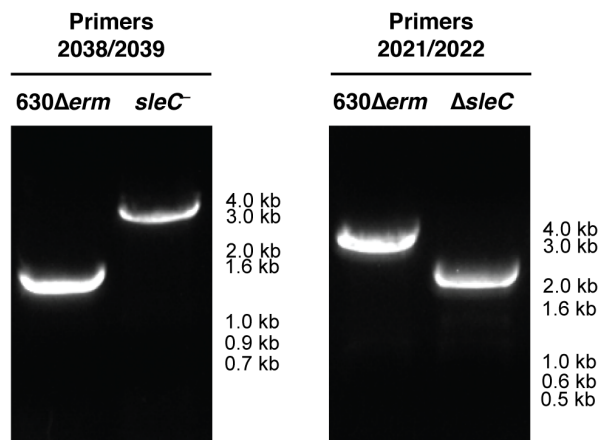


FIG S1. Construction of *gerG* (*CD0311*) and *sleC* mutants. (A) Schematic of the Targetron-based disruption of *gerG* in *JIR8094* and *630ΔermΔpyrE* (*gerG::ermB*) and deletion of *gerG*

(*ΔgerG*) in 630 Δ *erm* Δ *pyrE*. (B) Colony PCR of *sleC::ermB* and Δ *sleC* constructed in 630 Δ *erm* Δ *pyrE*. The group II intron is ~2 kB.