

Strain-specific Fibril Propagation by an A β Dodecamer

Dexter N. Dean¹, Pradipta K. Das², Pratip Rana³, Franklin Burg⁴, Yona Levites⁴, Sarah E.

Morgan², Preetam Ghosh³, and Vijayaraghavan Rangachari^{1*}

¹Department of Chemistry and Biochemistry, University of Southern Mississippi, Hattiesburg,

MS 39406

²School of Polymers and High Performance Materials, University of Southern Mississippi,

Hattiesburg, MS 39406

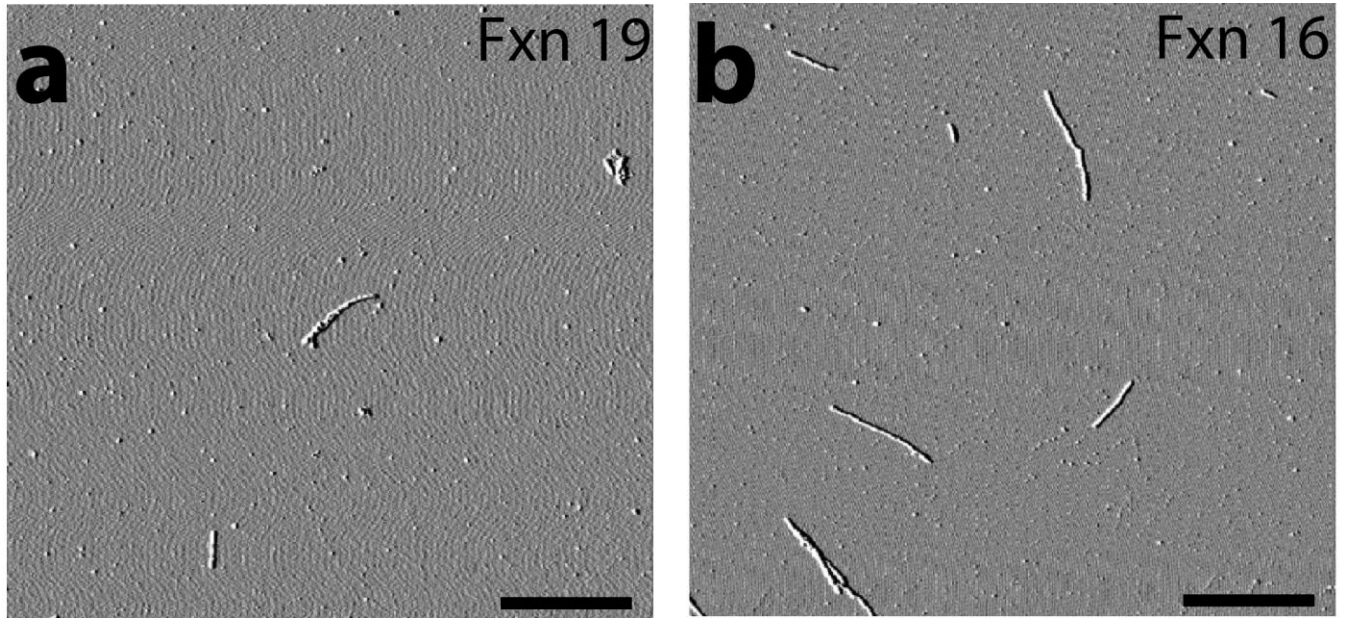
³Department of Computer Science, Virginia Commonwealth University, Richmond, VA 23284

⁴Center for Translational Research in Neurodegenerative Disease, University of Florida,

Gainesville, FL 32611

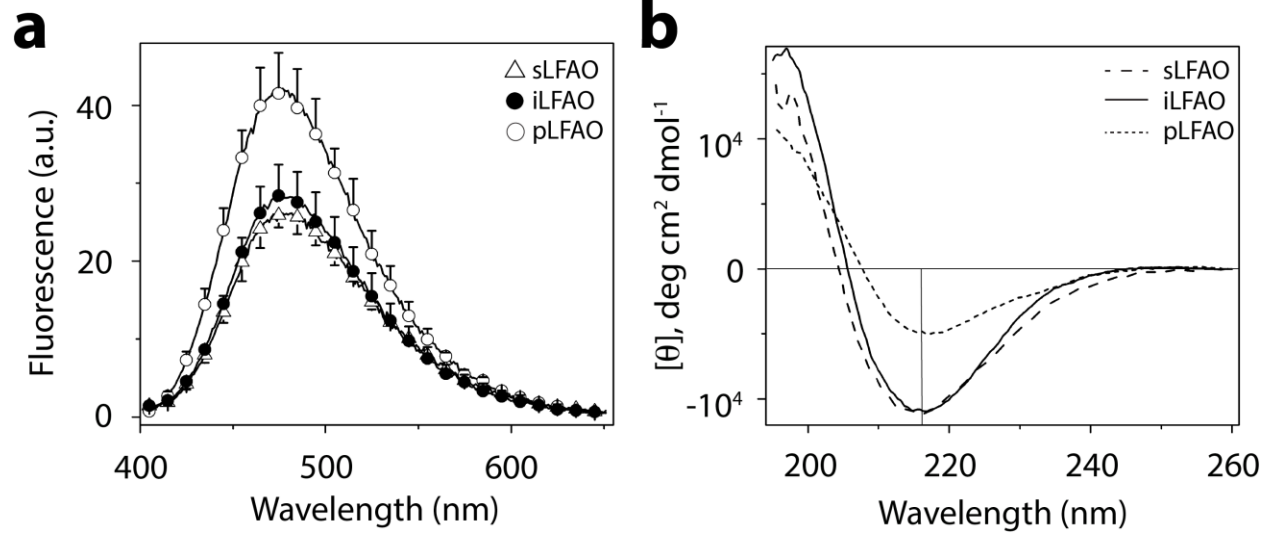
SUPPLEMENTAL INFORMATION

SUPPLEMENTARY FIGURE 1



Supplementary Figure 1: AFM of sLFAO aggregate peaks from SEC. Representative AFM images of fractions 16 (**a**) and 19 (**b**) from sLFAO at 7 days of incubation. Scale bar represents 1 μm .

SUPPLEMENTARY FIGURE 2



Supplementary Figure 2: Biophysical comparison of pLFAOs, iLFAOs and sLFAOs.

(a) ANS (100 μM) fluorescence scans of 10 μM sLFAO (Δ), iLFAO (\bullet), and pLFAO (\circ), respectively. Samples were equilibrated 1 m before measuring fluorescence using an excitation of 388 nm and scanning emission between 405 and 650 nm. (b) Circular dichroism spectra for 10 μM sLFAO (dashed), iLFAO (solid), and pLFAO (dotted), suggesting a β -sheet secondary structure (minima at 217 nm).