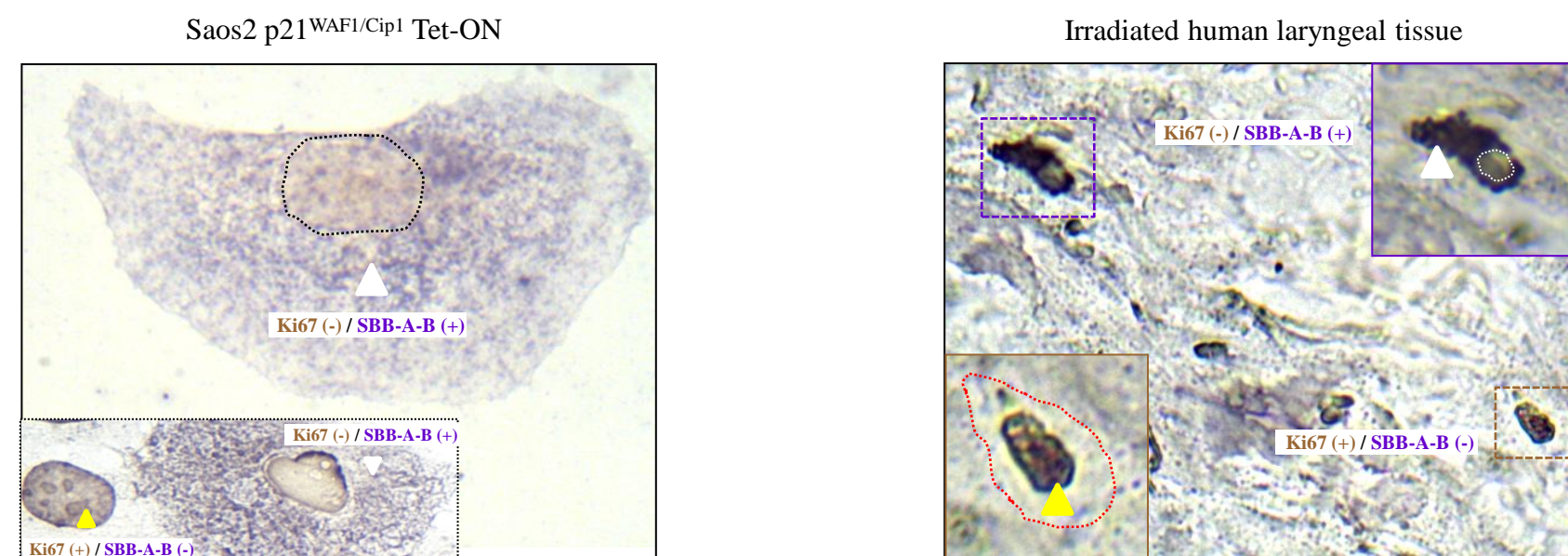


Suppl Fig 5

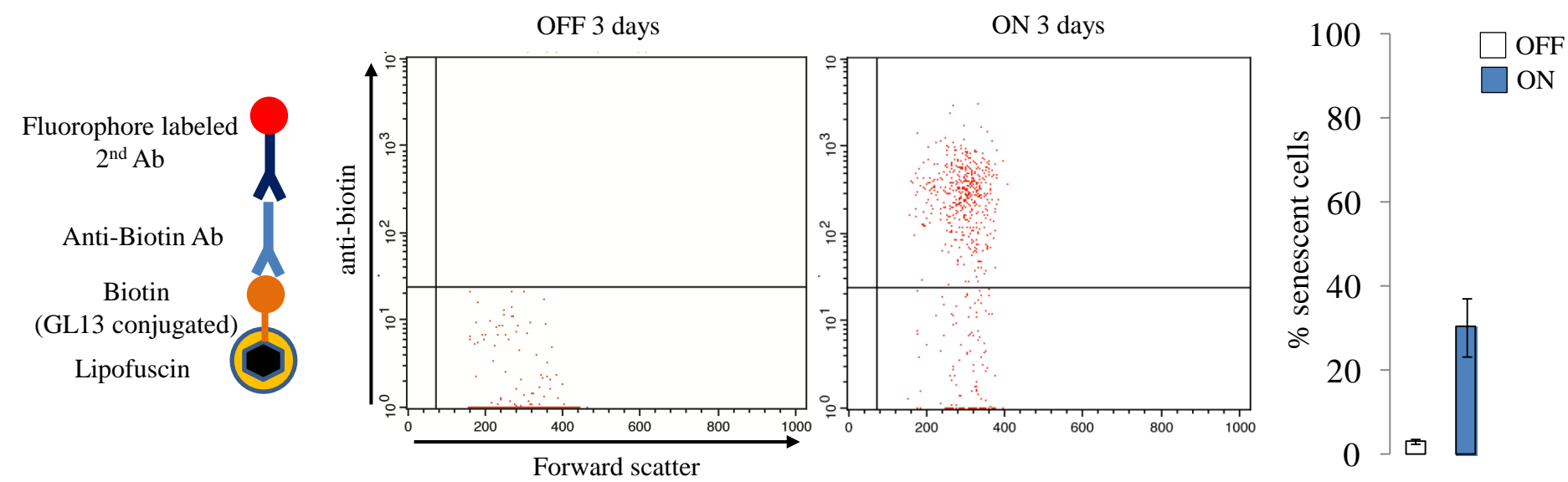
a.

Double staining: **Ki67 (DAB) - / SBB-Analogue-Biotin-mediated IHC –BCIP/NBT + (cytoplasmic blue/purple color)**



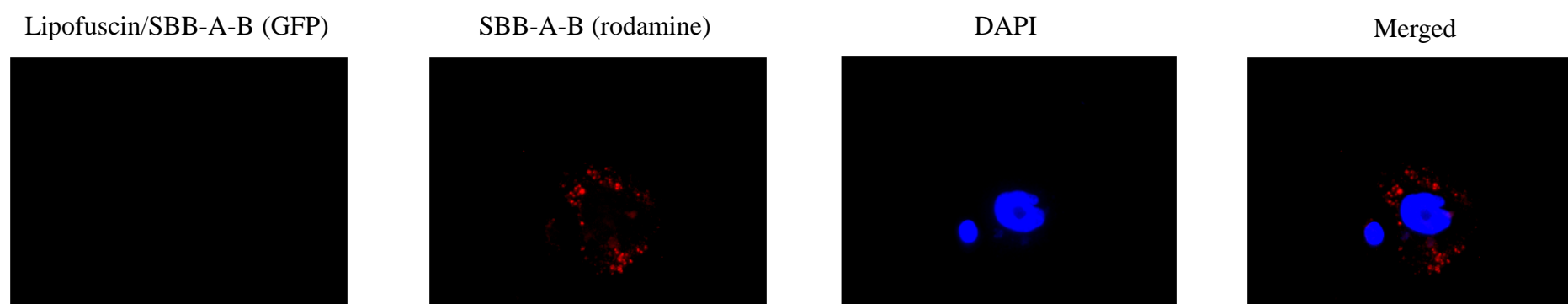
b.

Saos2-p21<sup>WAF1/Cip1</sup> Tet-ON



c.

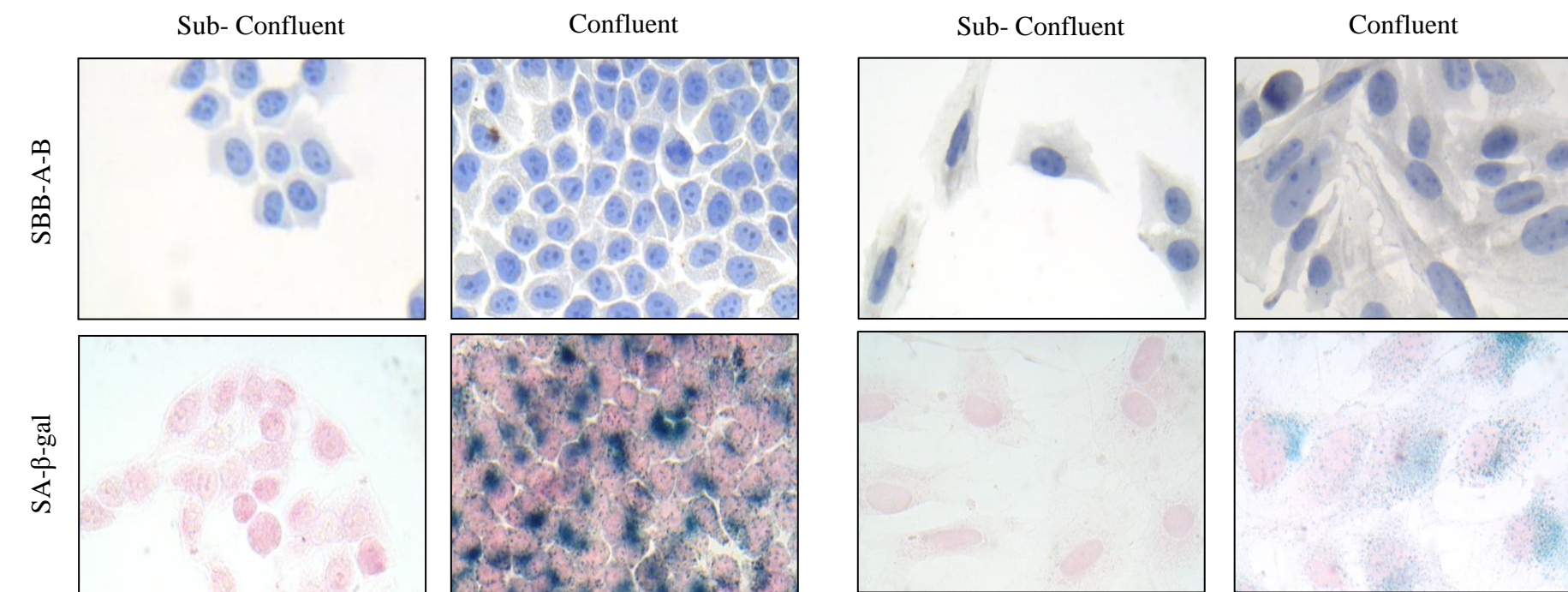
U2OS-Cdt1 Tet-ON (8days)



d.

HeLa

Li-Fraumeni



e.

HeLa

