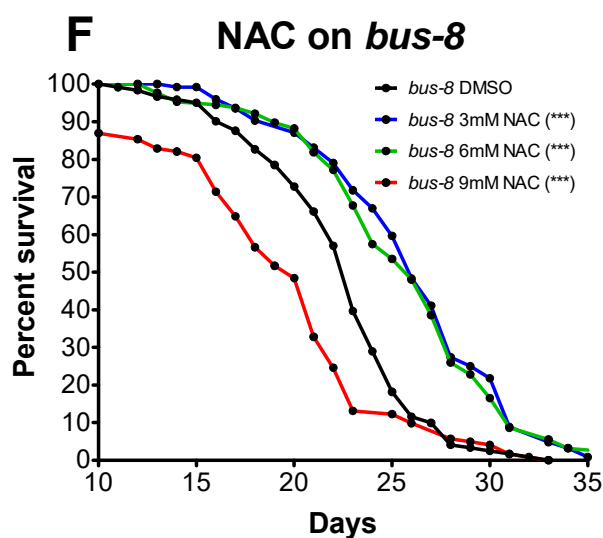
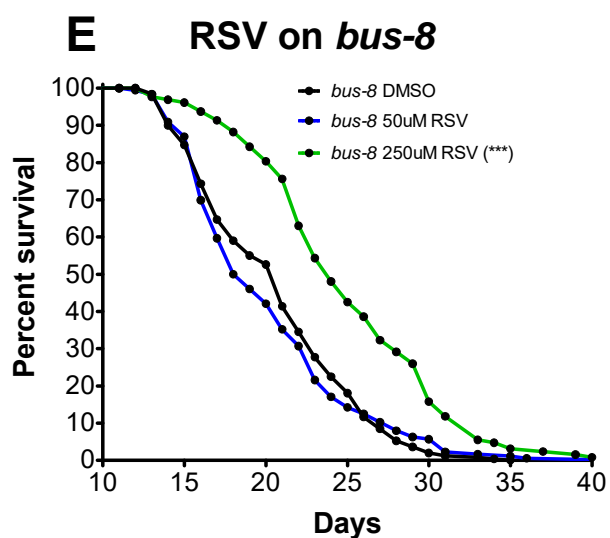
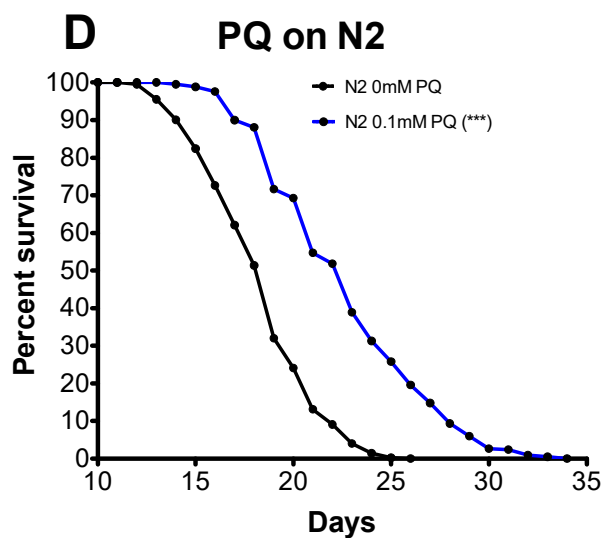
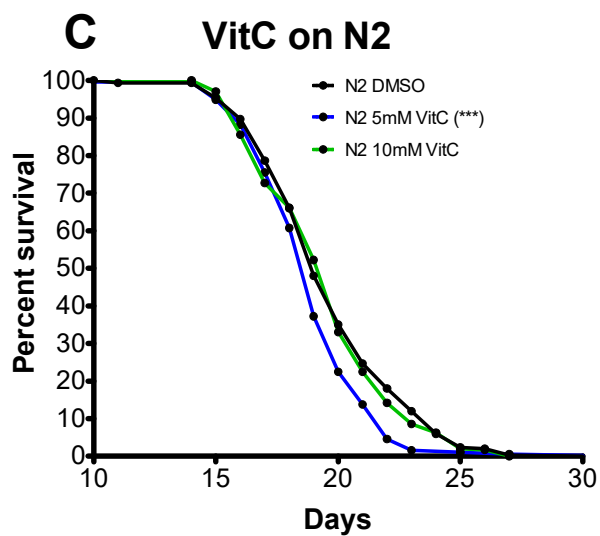
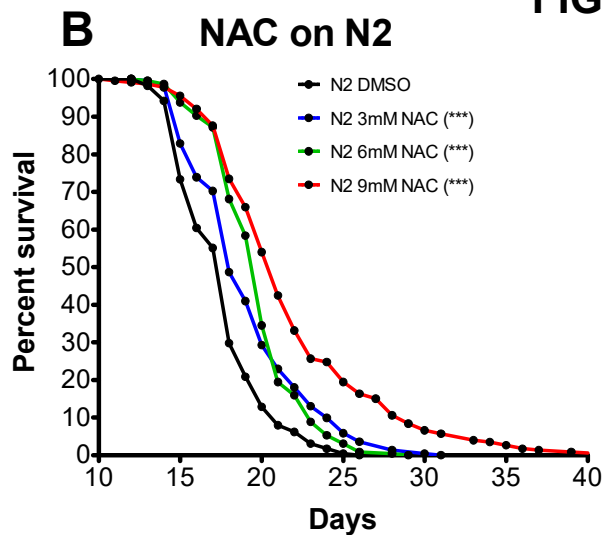
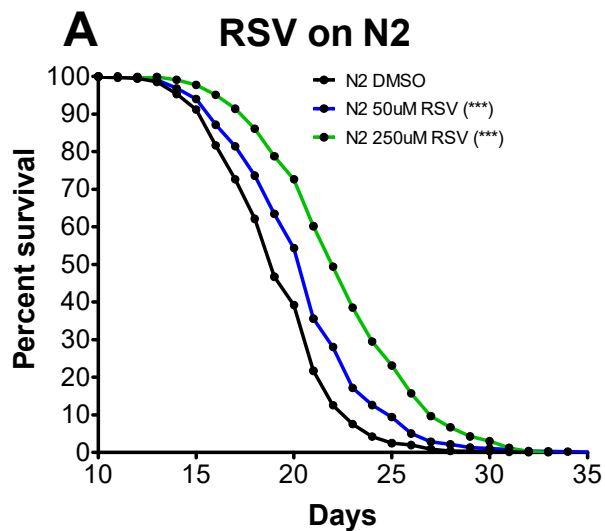
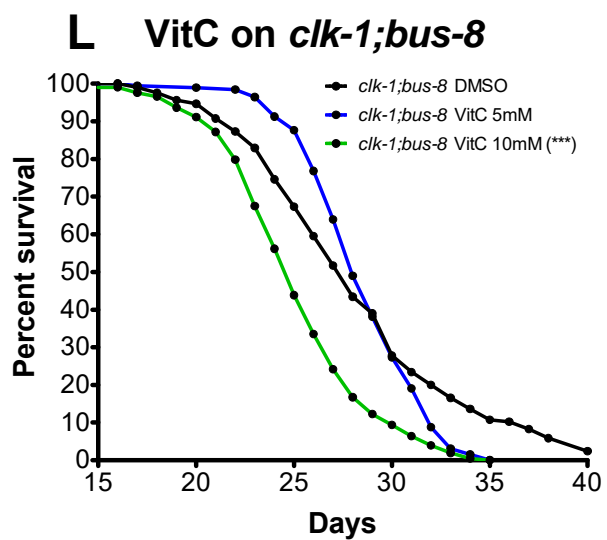
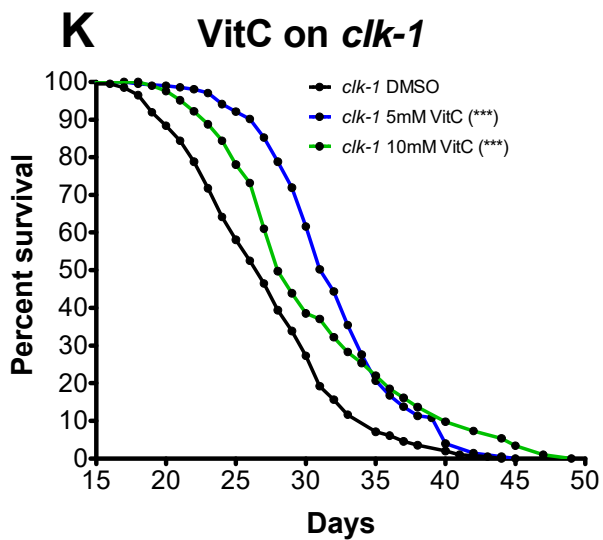
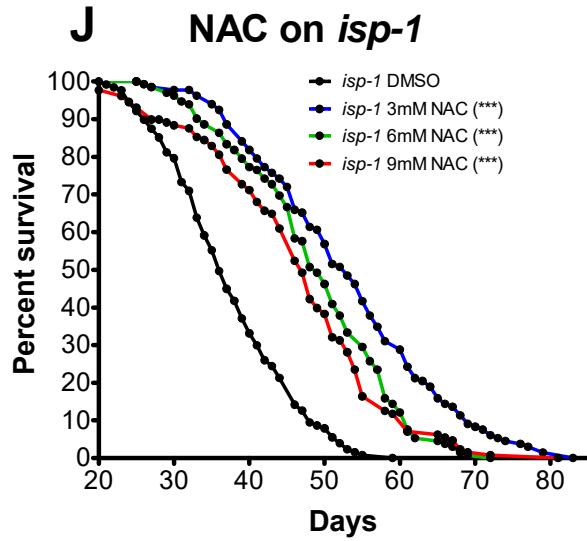
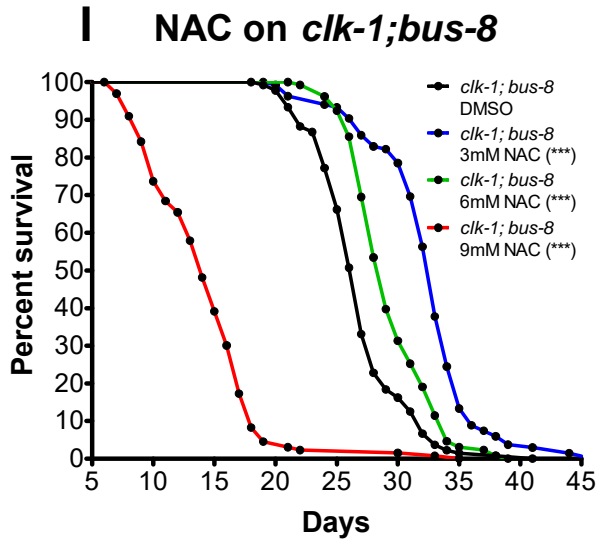
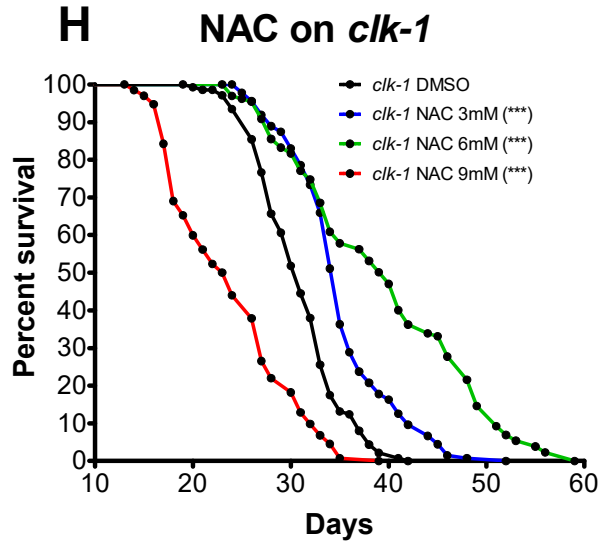
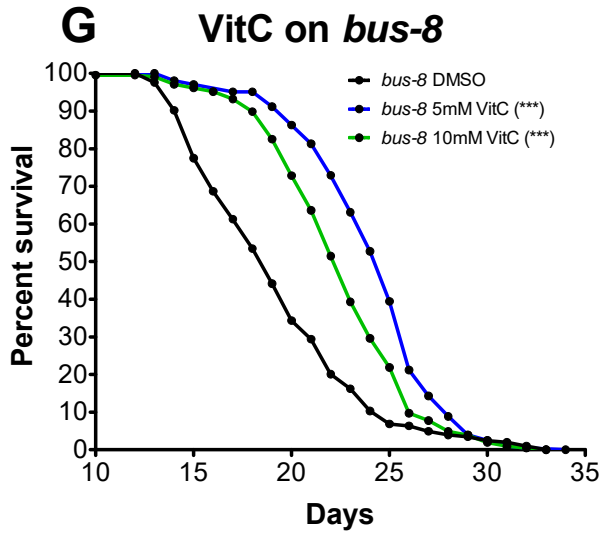
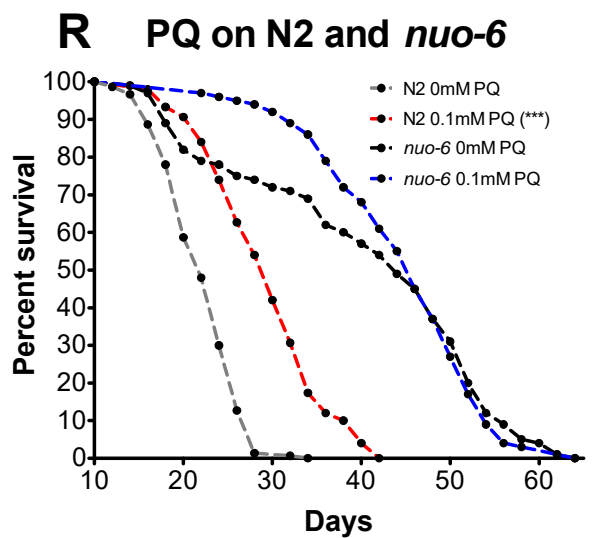
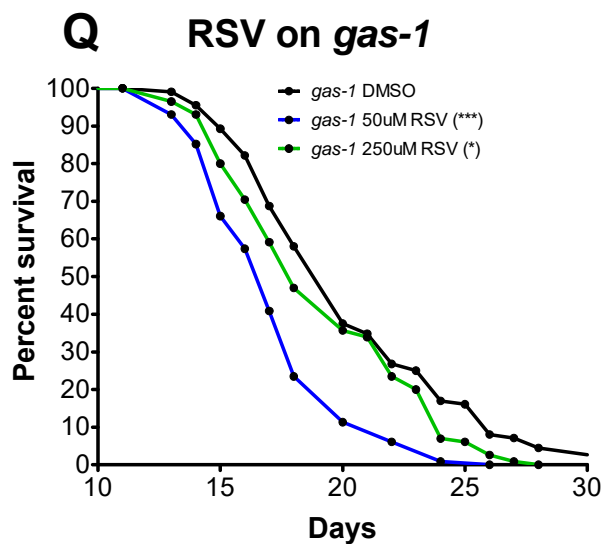
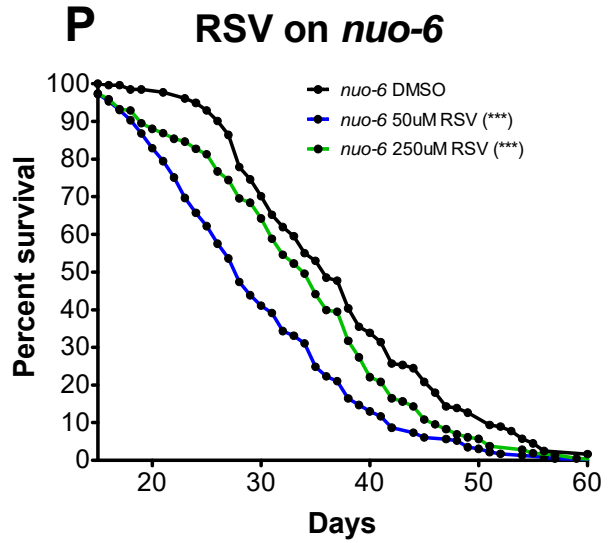
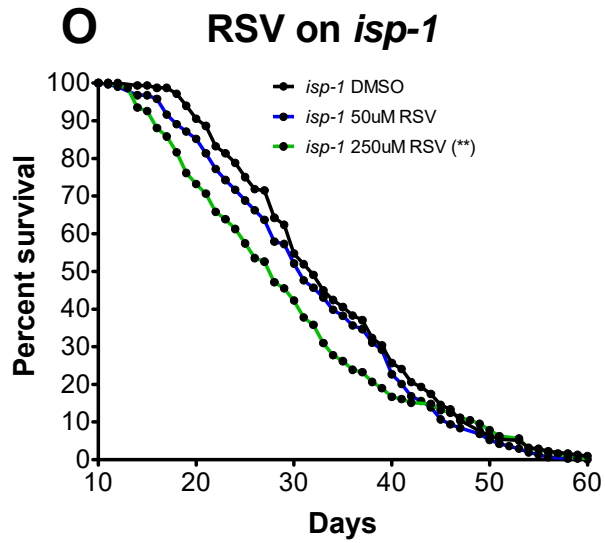
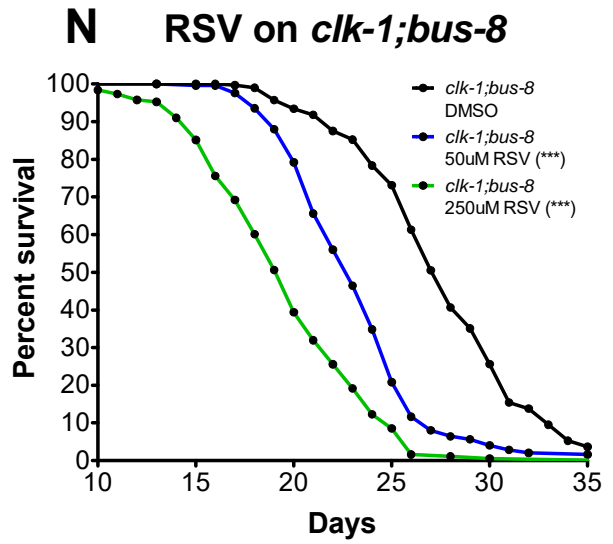
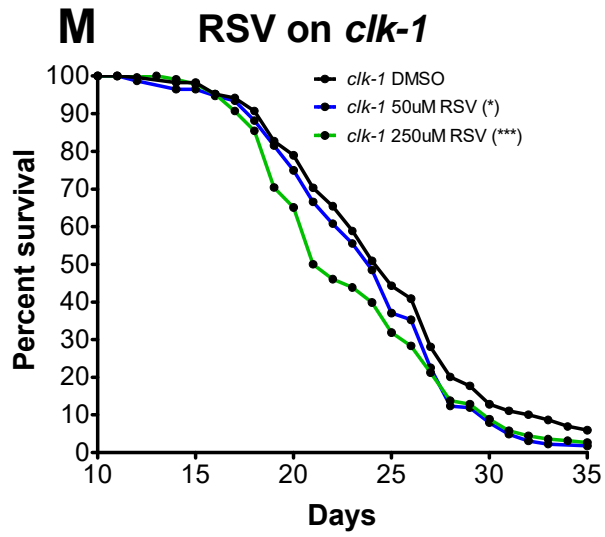


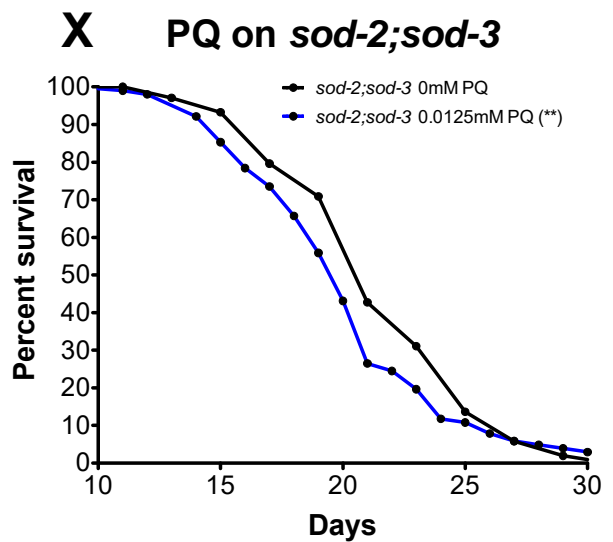
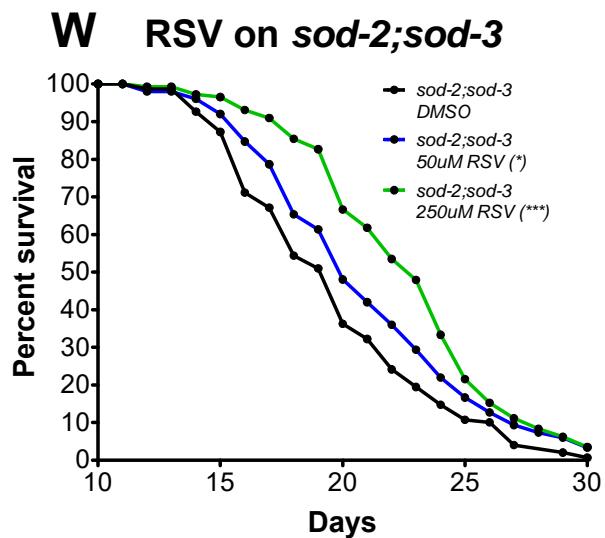
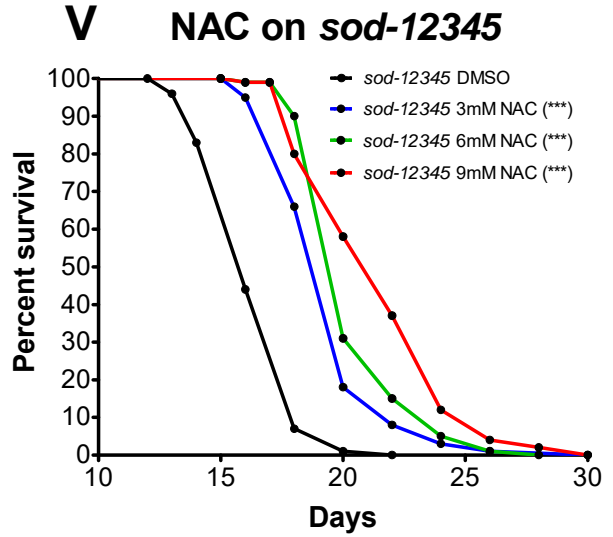
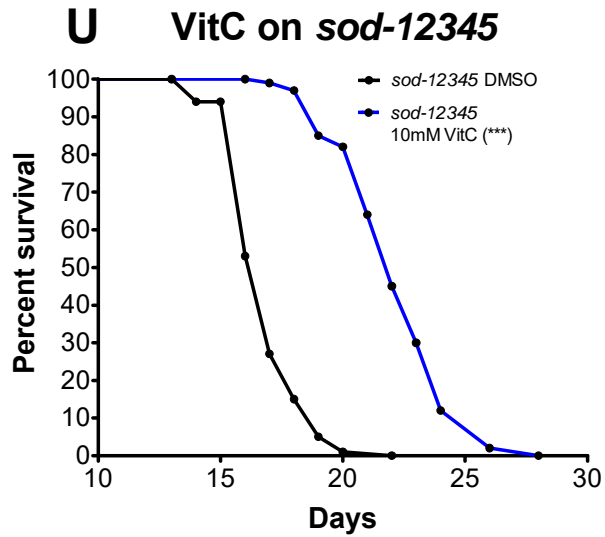
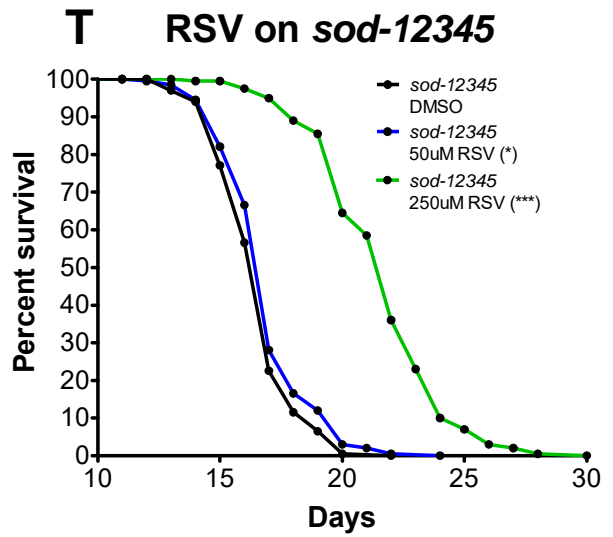
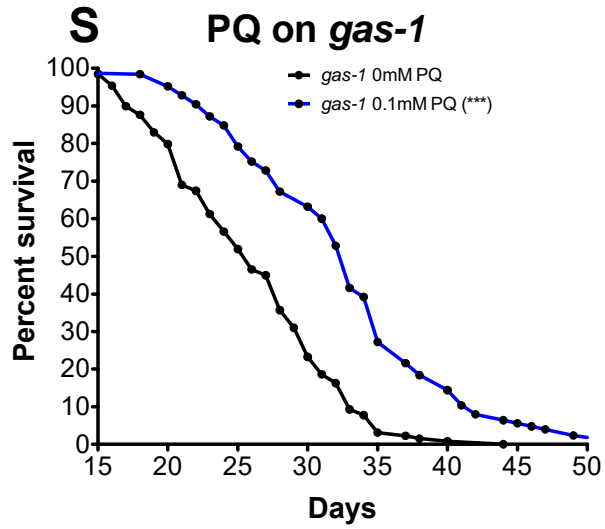
**FIGURE S1**



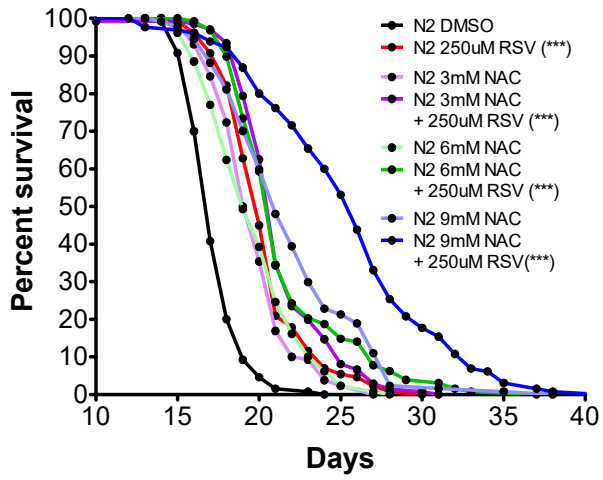


**FIGURE S1**

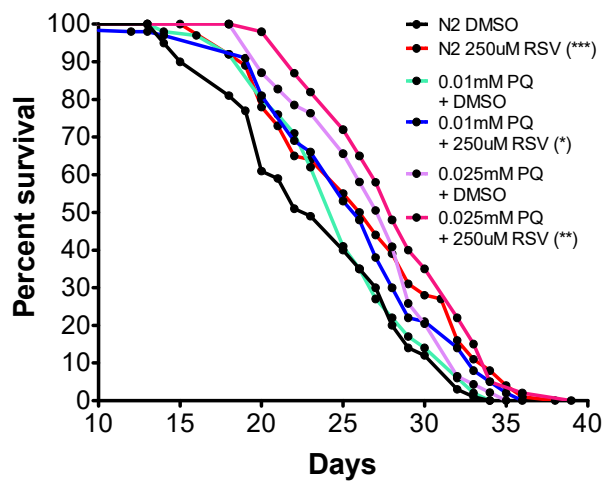




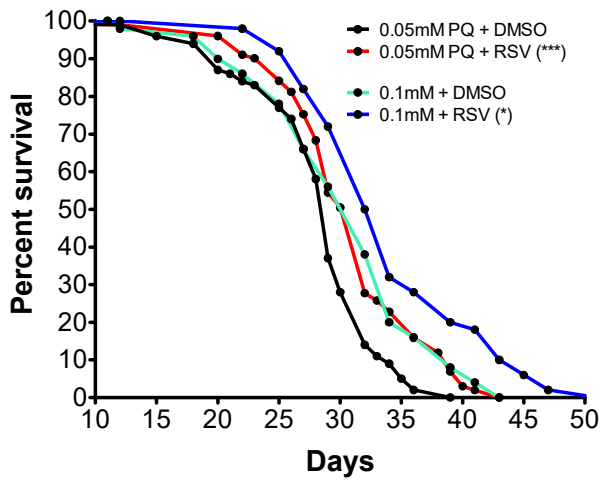
**Y NAC and RSV on N2**



**Z PQ and RSV on N2-1**



**AA PQ and RSV on N2-2**



## Legend

**Figure S1** Corresponding lifespan survival plots for lifespan data presented in the form of bar graphs within the article. The following survival plots are ordered according to the appearance of their corresponding bar graphs. **A)** The effect of RSV on the lifespan of N2. **B)** The effect of NAC on the lifespan of N2. **C)** The effect of VitC on the lifespan of N2. **D)** The effect of PQ on the lifespan of N2. **E)** The effect of RSV on the lifespan of *bus-8*. **F)** The effect of NAC on the lifespan of *bus-8*. **G)** The effect of VitC on the lifespan of *bus-8*. **H)** The effect of NAC on the lifespan of *clk-1*. **I)** The effect of NAC on the lifespan of *clk-1;bus-8*. **J)** The effect of NAC on the lifespan of *isp-1*. **K)** The effect of VitC on the lifespan of *clk-1*. **L)** The effect of VitC on the lifespan of *clk-1;bus-8*. **M)** The effect of RSV on the lifespan of *clk-1*. **N)** The effect of RSV on the lifespan of *clk-1;bus-8*. **O)** The effect of RSV on the lifespan of *isp-1*. **P)** The effect of RSV on the lifespan of *nuo-6*. **Q)** The effect of RSV on the lifespan of *gas-1*. **R)** The effect of PQ on the lifespan of N2 and *nuo-6*. **S)** The effect of PQ on the lifespan of *gas-1*. **T)** The effect of RSV on the lifespan of *sod-12345*. **U)** The effect of VitC on the lifespan of *sod-12345*. **V)** The effect of NAC on the lifespan of *sod-12345*. **W)** The effect of RSV on the lifespan of *sod-2;sod-3*. **X)** The effect of PQ on the lifespan of *sod-2;sod-3*. **Y)** The effect of NAC and RSV on the lifespan of N2. **Z)** The effect of PQ and RSV on the lifespan and N2 (part 1 of 2). **AA)** The effect of PQ and RSV on the lifespan of N2 (part 2 of 2). Please refer to the main article for additional details. Survival curves show the percentage of worms alive as a function of time. The y-axes show percent survival from 0 to 100%. The x-axes show the age of the worms, and may vary between plots, since they are individualized to separate survival lines for different conditions as much as possible. The asterisks indicate P-values from log-rank comparisons to the control: \* represents 0.01 to 0.05; \*\* = represents 0.001 to 0.01; \*\*\* represents <0.001.