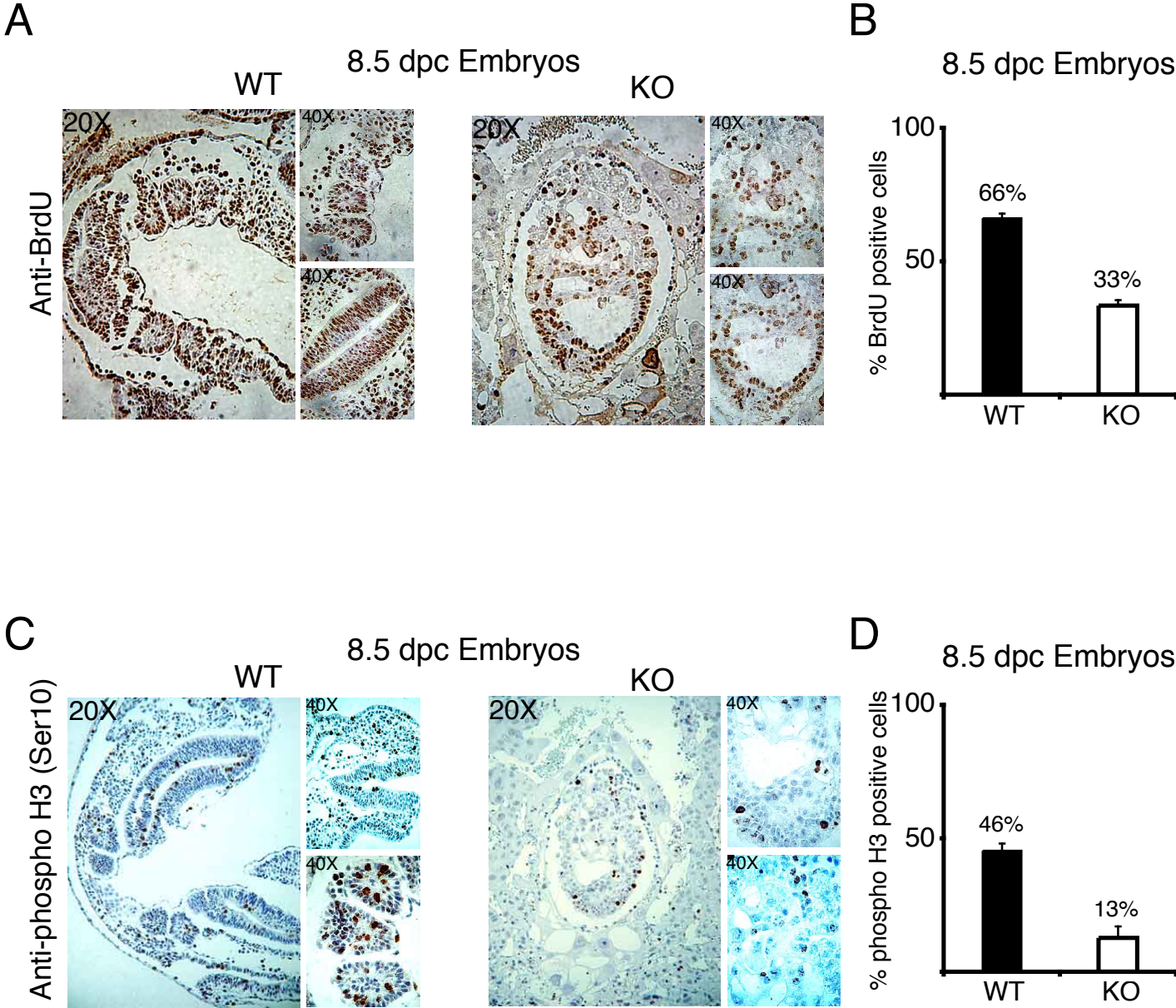


# Supplementary Figure 1



**Supplementary Figure 1. Proliferative defects in 8.5 dpc *Suz12* KO embryos.**

**A:** Different magnifications of IHC staining of BrdU in WT (left panels) and KO (right panels) 8.5 dpc embryos. **B:** Average of the percentage of BrdU positive cells in both WT and KO 8.5 dpc embryos. Standard deviations (SD) is indicated. Total number of cells counted: 713 in WT and 434 in KO embryos. **C:** Different magnifications of IHC staining of phosphorylation of Ser10 of Histone H3 in WT (left panels) and KO (right panels) 8.5 dpc embryos. **D:** Average of the percentage of H3 Ser10 phosphorylated cells in both WT and KO 8.5 dpc embryos. SD is indicated. Total number of cells counted: 907 in WT and 724 in KO embryos.