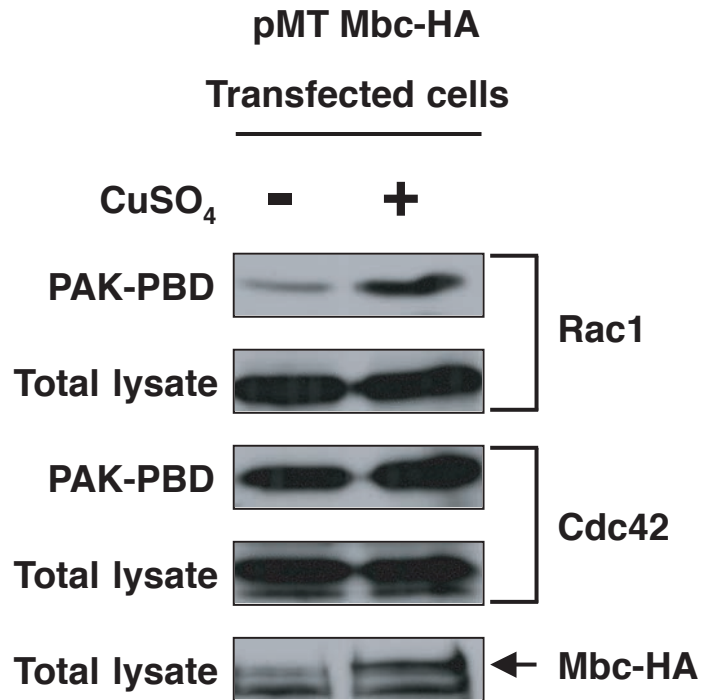


Supplementary Figure S5



Supplementary Figure S5. Mbc Functions as a GEF for Rac1. An established cell line expressing Mbc-HA under the control of the metallothionein promoter was starved overnight in Schneider's medium + 0.1% FCS. Then, the cells were incubated with (+) or without (-) 100 mg/ml CuSO₄ for 5 hr. Lysates were prepared and incubated with GST-PAK-PBD for 1 hr. GST-PAK-PBD was precipitated, and the amounts of coprecipitated endogenous Rac1-GTP and Cdc42-GTP were visualized by immunoblotting for Rac1 and Cdc42, respectively.