

Supplementary Figures

Figure S1. Three-dimensional structure of *S. aureus* IPLA16 and *E. faecium* MMRA (A and B), *L. plantarum* 55-1 (C and D), *L. pentosus* A1 (E and F) or *L. pentosus* B1 (G and H) dual-species biofilms. Images correspond to 5 h biofilms treated with SM buffer (A, C, E and G) or phage phiIPLA-RODI for 4 h (B, D, F and H). Biofilms were stained with SYTO® 9, which dyes cells from all species green.

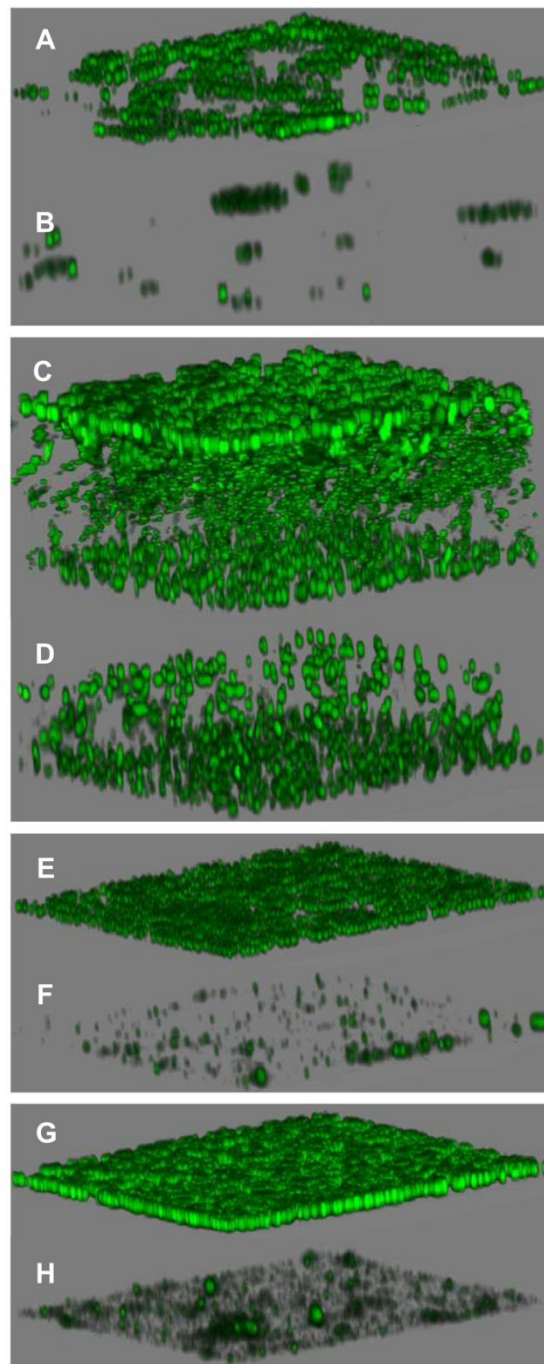


Figure S2. Biomass quantification of 5 h biofilms formed by *S. aureus* IPLA16 with other species under proliferation conditions and treated with phage phiIPLA-RODI. Values represent the means \pm standard deviations of 4 technical replicates corresponding to one representative experiment out of three with the same trends. White bars correspond to the untreated control, while black and grey bars represent samples treated with 10^9 or 10^6 PFU/well, respectively. Phage-infected samples were compared to their respective untreated controls. *, P-value<0.05.

