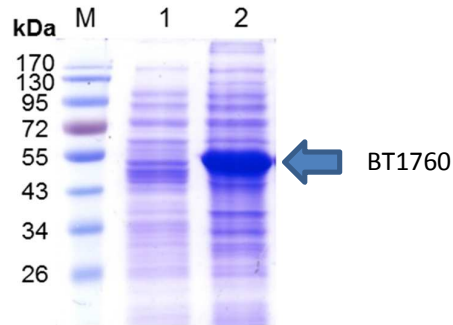


A Highly Active Endo-Levanase BT1760 of a Dominant Mammalian Gut Commensal *Bacteroides thetaiotaomicron* Cleaves Not Only Various Bacterial Levans, but Also Levan of Timothy Grass



S2 Fig. Overexpression of the endo-levanase BT1760 in *Escherichia coli*.

Lysates of *E. coli* BL21(DE3) (10 μ g of total protein) carrying either the empty vector (pURI3Cter; lane 1) or the pURI3-BT1760Cter vector (lane 2) were analyzed by SDS-PAGE. The endo-levanase BT760 with the C-terminal His₆ tag has the molecular weight of 58 kDa. M – PageRuler™ prestained protein ladder (Thermo Scientific, USA) was loaded as a size-reference.