

Figure S1

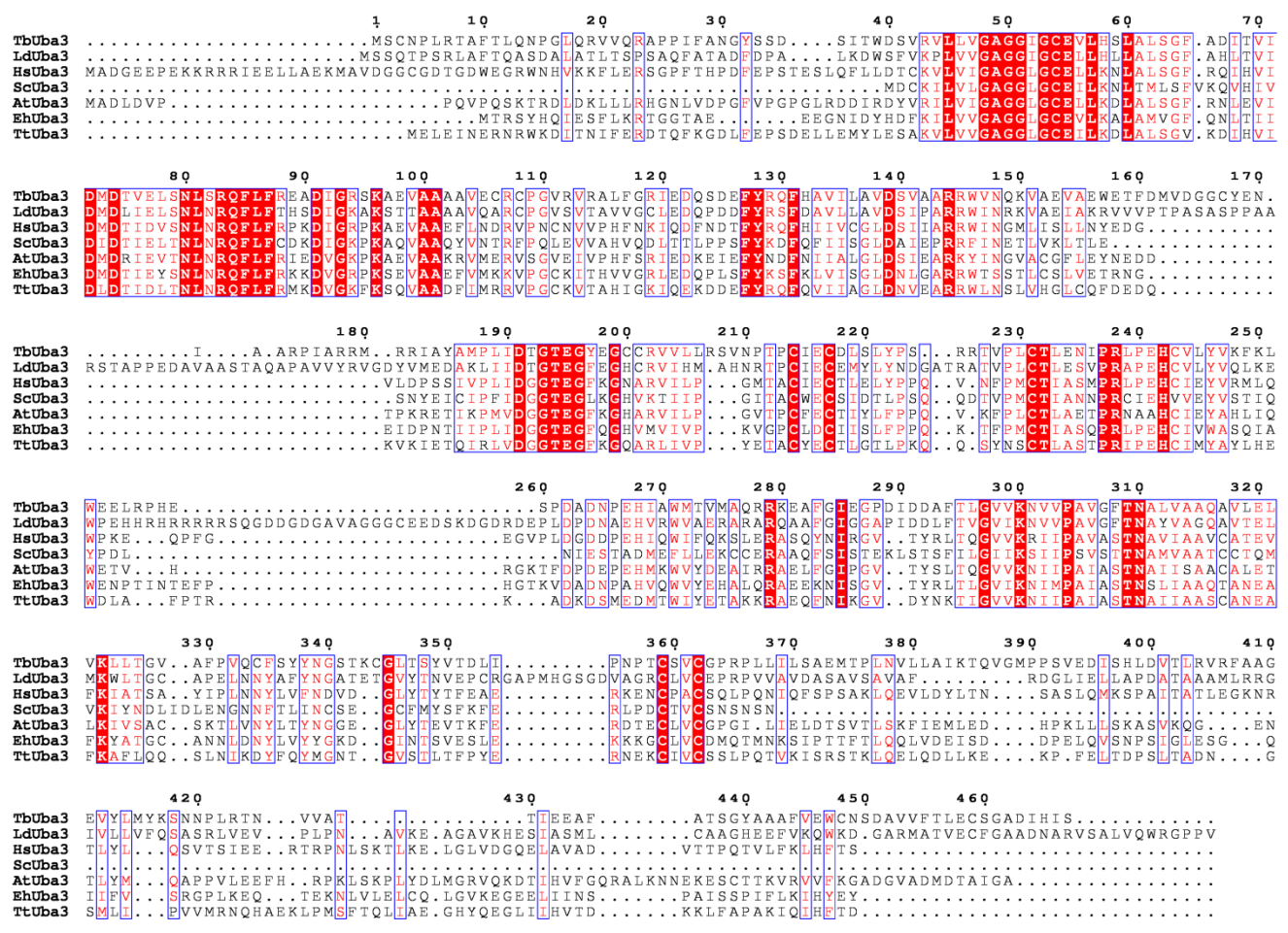


Figure S1. Sequence alignment of TbUba3 with its orthologs from other eukaryotes. Uba3 sequences from the five eukaryotic supergroups, Excavata (*Trypanosoma brucei* and *Leishmania donovani*), Archaeplastida (*Arabidopsis thaliana*), Chromalveolata (*Tetrahymena thermophila*), Amoebozoa (*Entamoeba histolytica*), and Opisthokonta (budding yeast and humans), were aligned. TbUba3, *Trypanosoma brucei* Uba3 (Q38F81); LdUba3, *Leishmania donovani* Uba3 (E9B7D7); HsUba3, *Homo sapiens* Uba3 (Q8TBC4); ScUba3, *Saccharomyces cerevisiae* Uba3 (Q99344); AtUba3, *Arabidopsis thaliana* Uba3 (O65041); EhUba3, *Entamoeba histolytica* Uba3 (N9UYN4); TtUba3, *Tetrahymena thermophila* Uba3 (Q22T77).

Figure S2

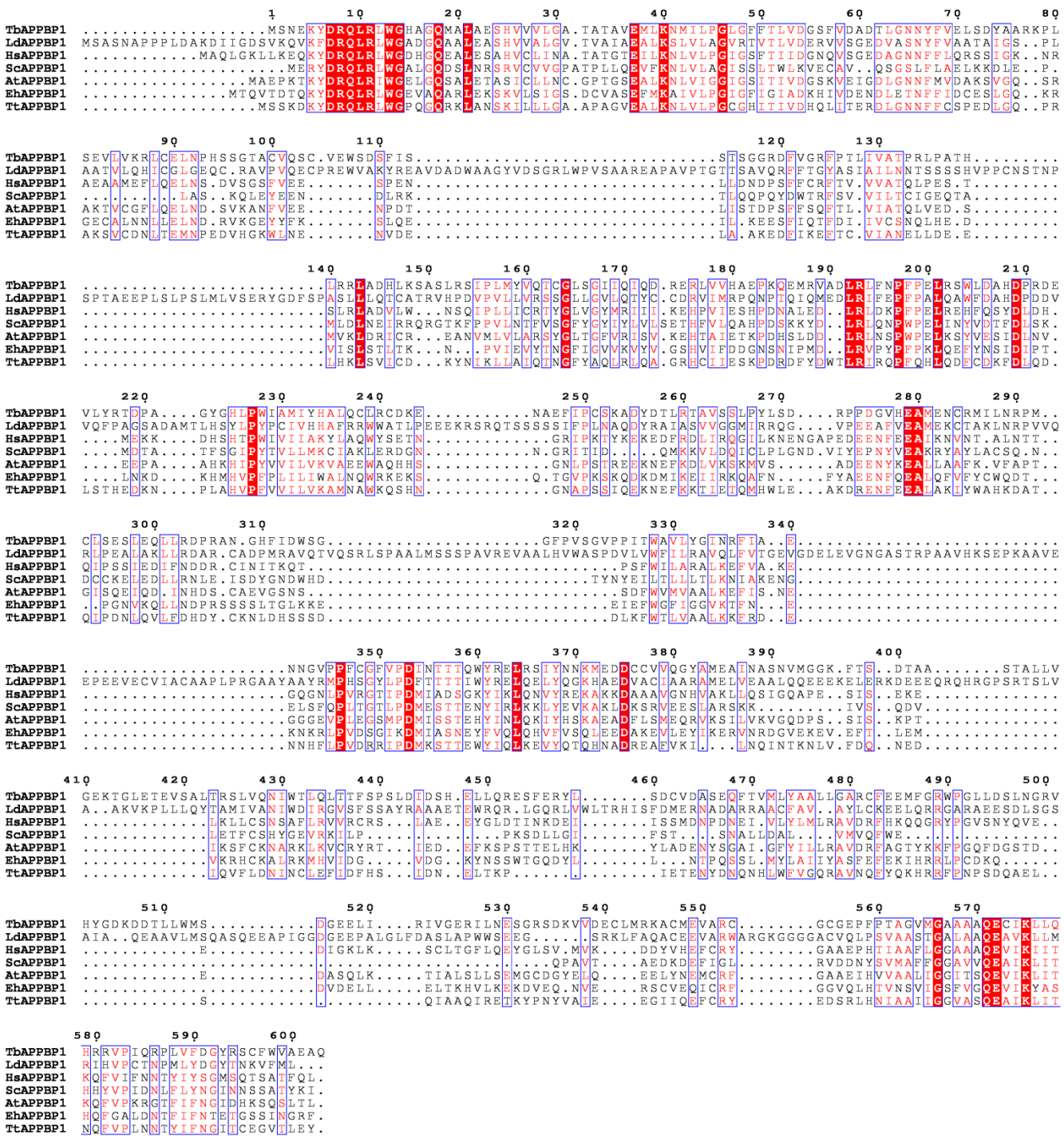


Figure S2. Sequence alignment of TbAPPBP1 with its orthologs from other eukaryotes. Uba3 sequences from the five eukaryotic supergroups, Excavata (*Trypanosoma brucei* and *Leishmania donovani*), Archaeplastida (*Arabidopsis thaliana*), Chromalveolata (*Tetrahymena thermophila*), Amoebozoa (*Entamoeba histolytica*), and Opisthokonta (budding yeast and humans), were aligned. TbAPPBP1, *Trypanosoma brucei* APPBP1 (Q586W2); LdAPPBP1, *Leishmania donovani* APPBP1 (E9BPL7); HsAPPBP1, *Homo sapiens* APPBP1 (Q13564); ScAPPBP1, *Saccharomyces cerevisiae* APPBP1 (N1NW69); AtAPPBP1, *Arabidopsis thaliana* APPBP1 (Q9ZV69); EhAPPBP1, *Entamoeba histolytica* APPBP1 (C4M111); TtAPPBP1, *Tetrahymena thermophila* APPBP1 (I7M2E2).

Figure S3

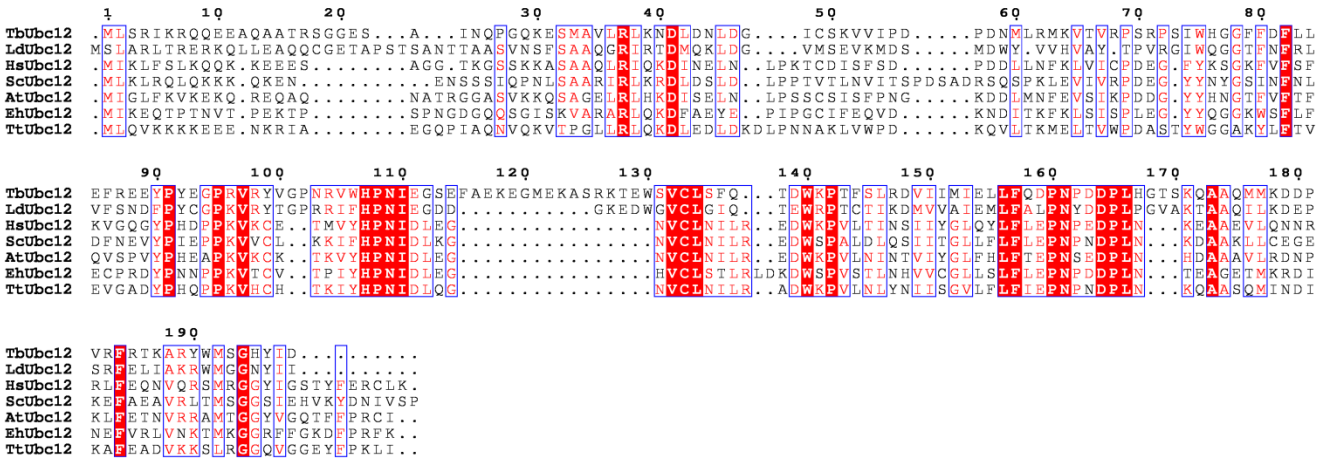


Figure S3. Sequence alignment of TbUbc12 with its orthologs from other eukaryotes. Uba3 sequences from each of the five eukaryotic supergroups, Excavata (*Trypanosoma brucei* and *Leishmania donovani*), Archaeplastida (*Arabidopsis thaliana*), Chromalveolata (*Tetrahymena thermophila*), Amoebozoa (*Entamoeba histolytica*), and Opisthokonta (budding yeast and humans), were aligned. TbUbc12, *Trypanosoma brucei* Ubc12 (Q57TW2); LdUbc12, *Leishmania donovani* Ubc12 (E9BH40); HsUbc12, *Homo sapiens* Ubc12 (P61081); ScUbc12, *Saccharomyces cerevisiae* Ubc12 (P52491); AtUbc12, *Arabidopsis thaliana* Ubc12 (Q9SDY5); EhUbc12, *Entamoeba histolytica* Ubc12 (C4M9L2); TtUbc12, *Tetrahymena thermophila* Ubc12 (Q247Y5).