

## SUPPLEMENTARY MATERIAL

DegreeCox: a network-based regularization method for survival analysis  
André Veríssimo, Arlindo L. Oliveira, Marie-France Sagot and Susana Vinga

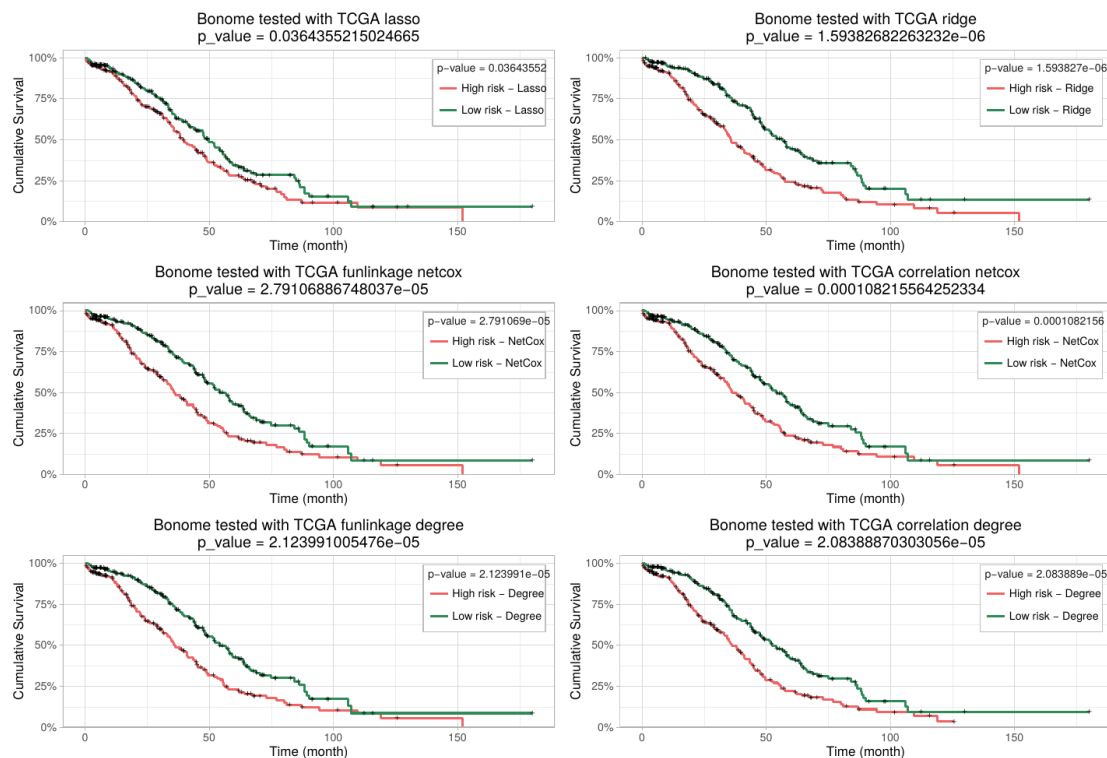
### Kaplan Meier curves and log-rank tests

The following figures are the Kaplan-Meier curves and log-rank tests obtained for all the combinations of the three datasets (Bonome, TCGA, Tothill) described in the manuscript. The testing was performed using a each of the datasets for training and testing the results on the other two. Two stratifications were performed: A) Using the top 40% patients with higher risk *versus* the 40% low risk patients; and B) Using a 50%-50% split.

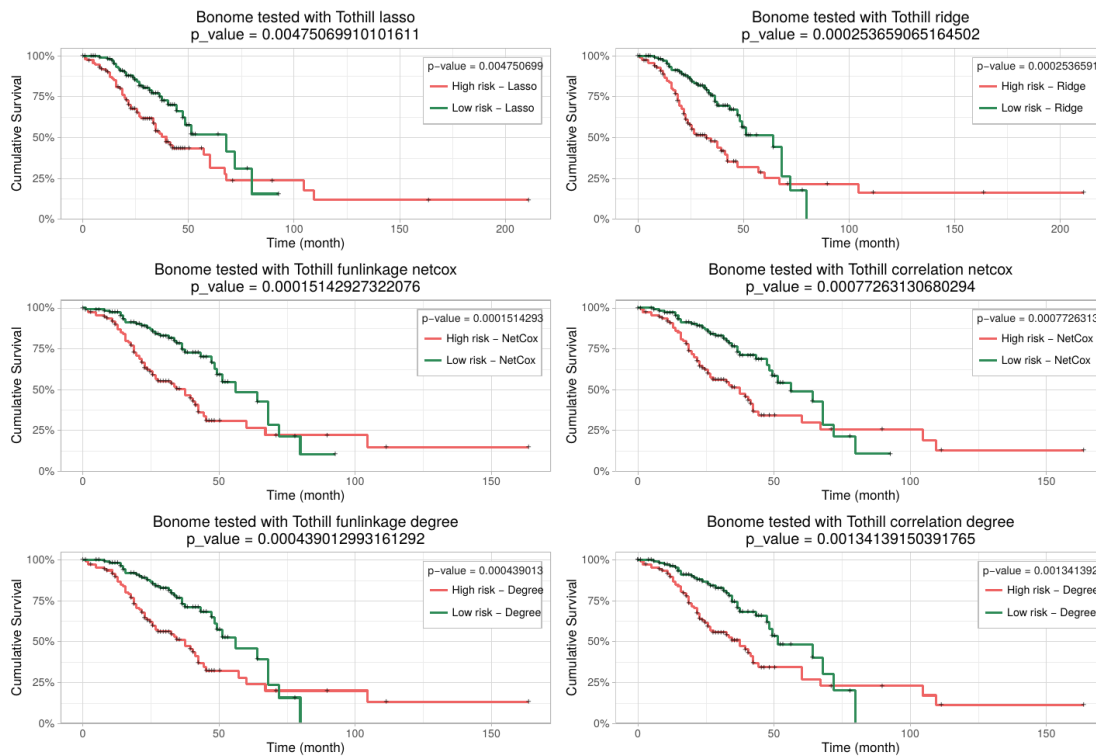
#### A) Top 40% vs. Lower 40%

##### A1) Training dataset: Bonome

##### Testing dataset: TCGA

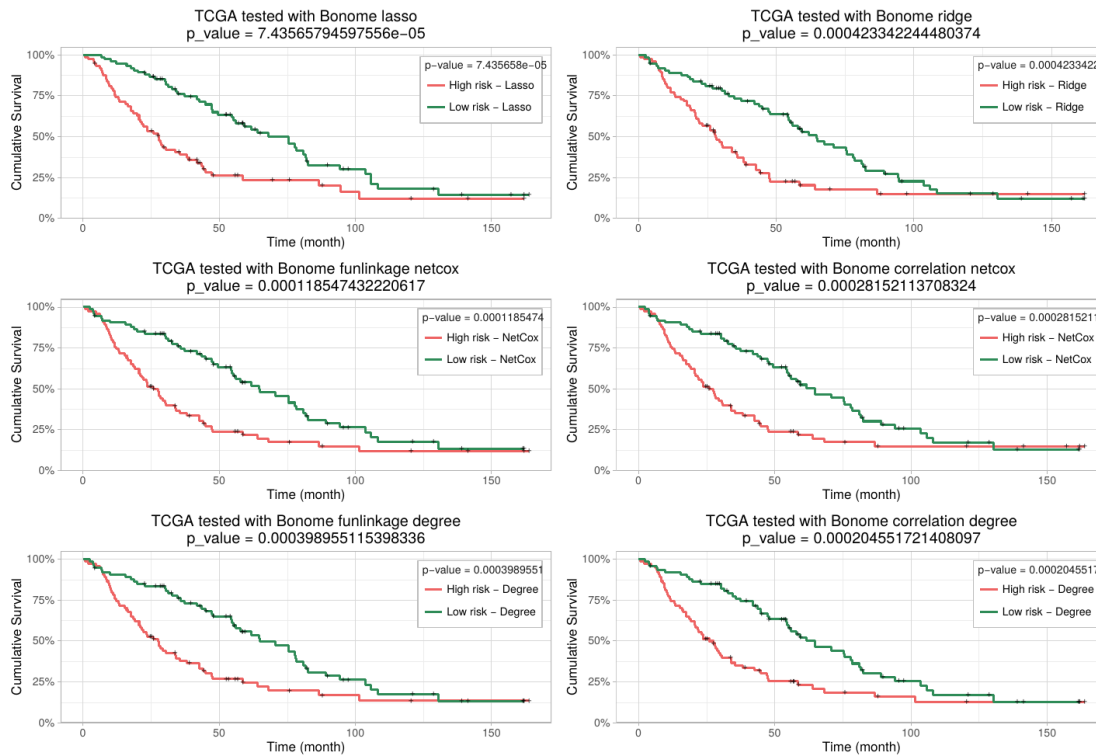


## Testing dataset: Tothill

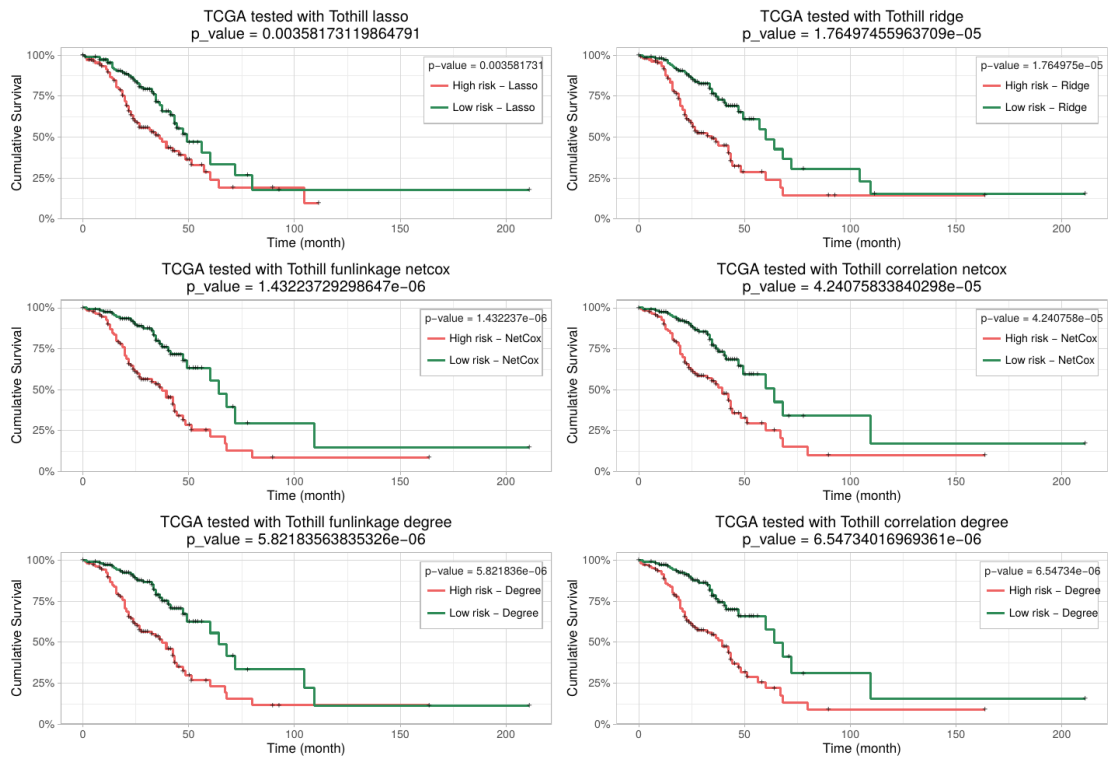


## A2) Training dataset: TCGA

### Testing dataset: Bonome

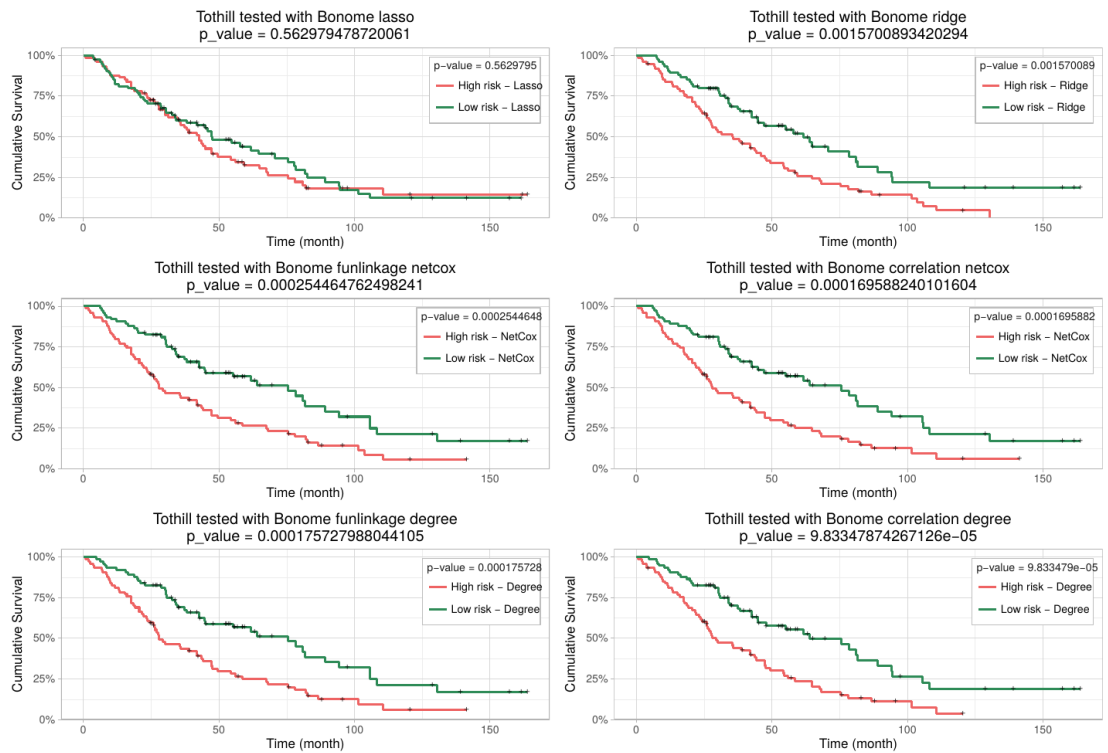


## Testing dataset: Tothill

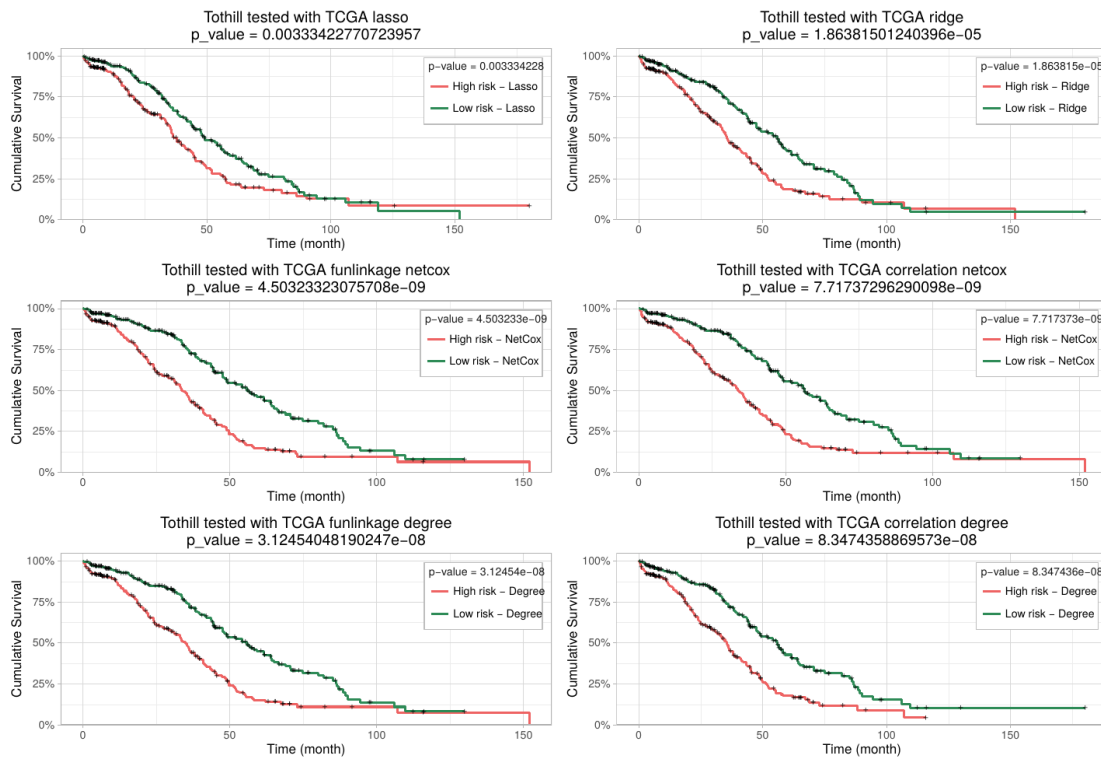


## A3) Training dataset: Tothill

## Testing dataset: Bonome



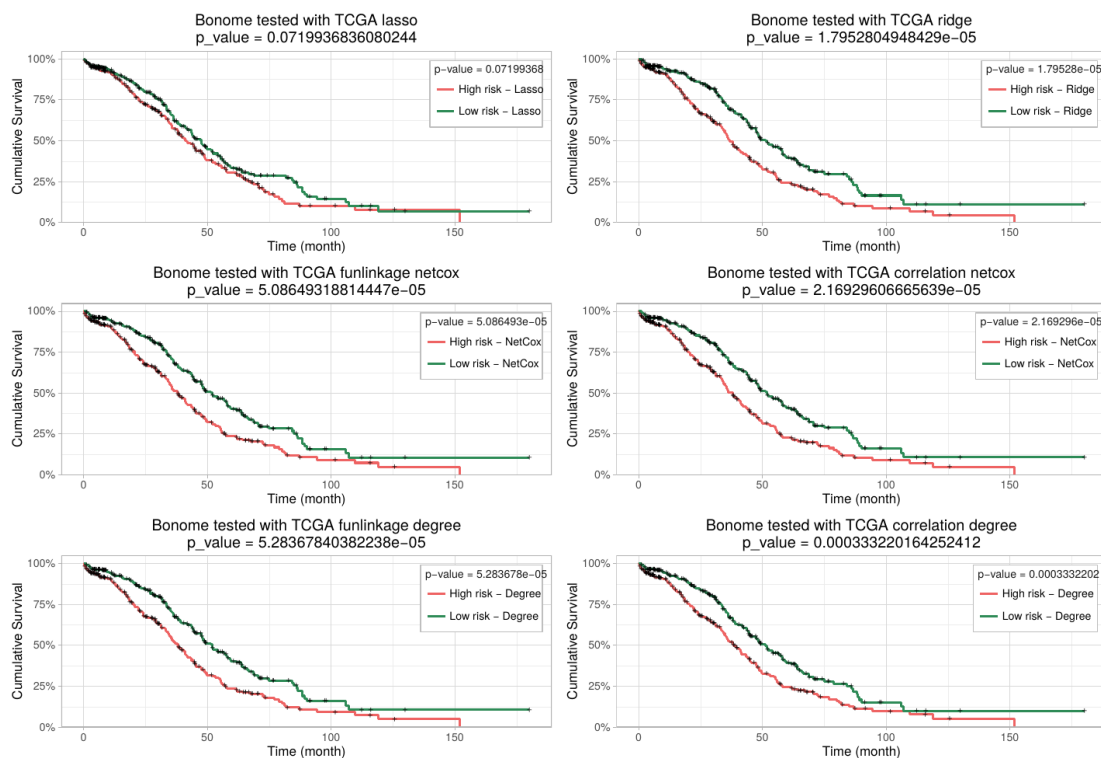
## Testing dataset: TCGA



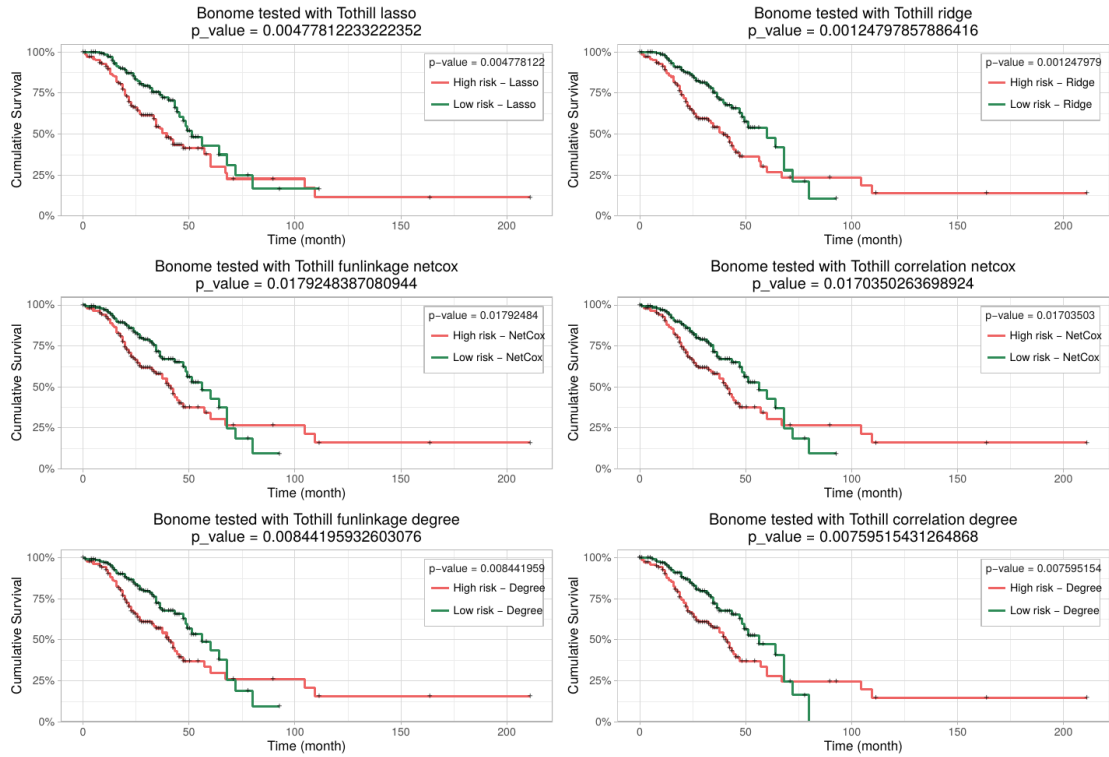
## B) Top 50% vs. Lower 50%

### B1) Training dataset: Bonome

## Testing dataset: TCGA

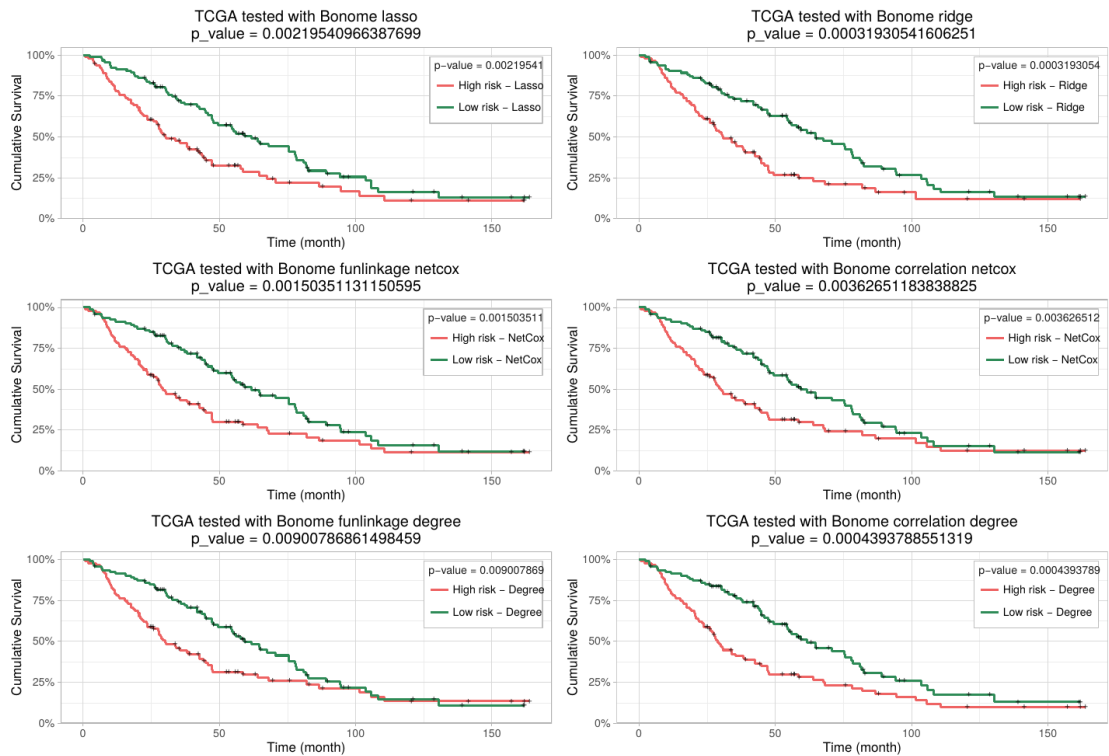


## Testing dataset: Tothill

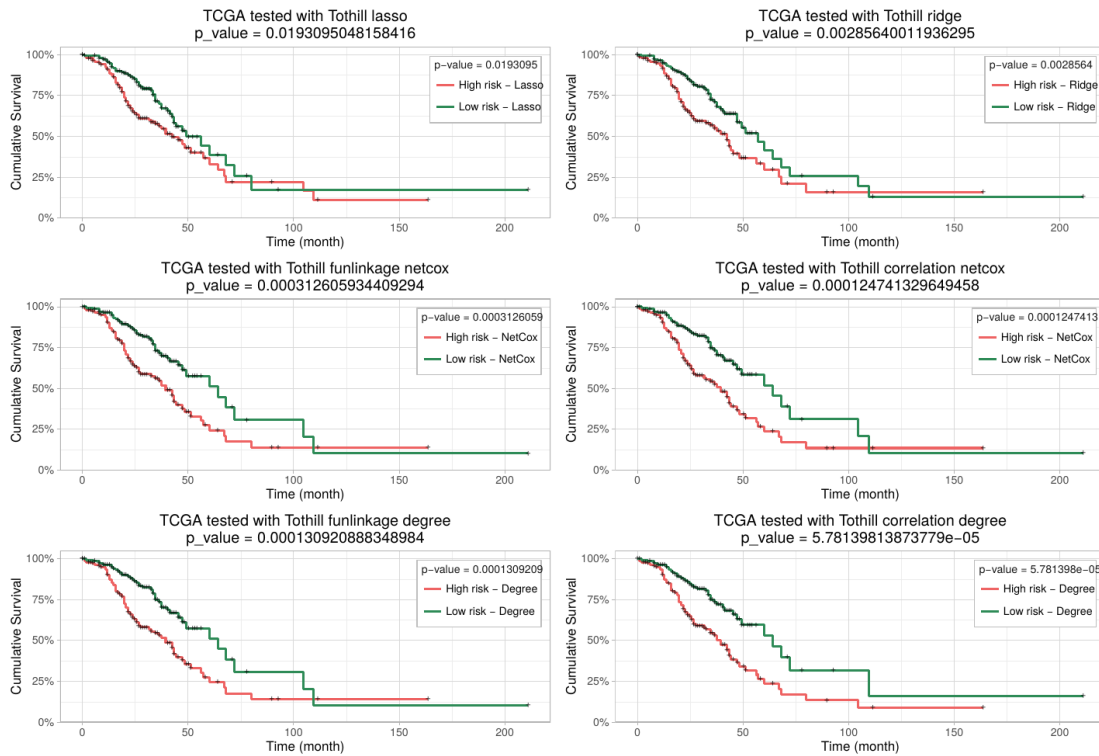


## B2) Training dataset: TCGA

### Testing dataset: Bonome

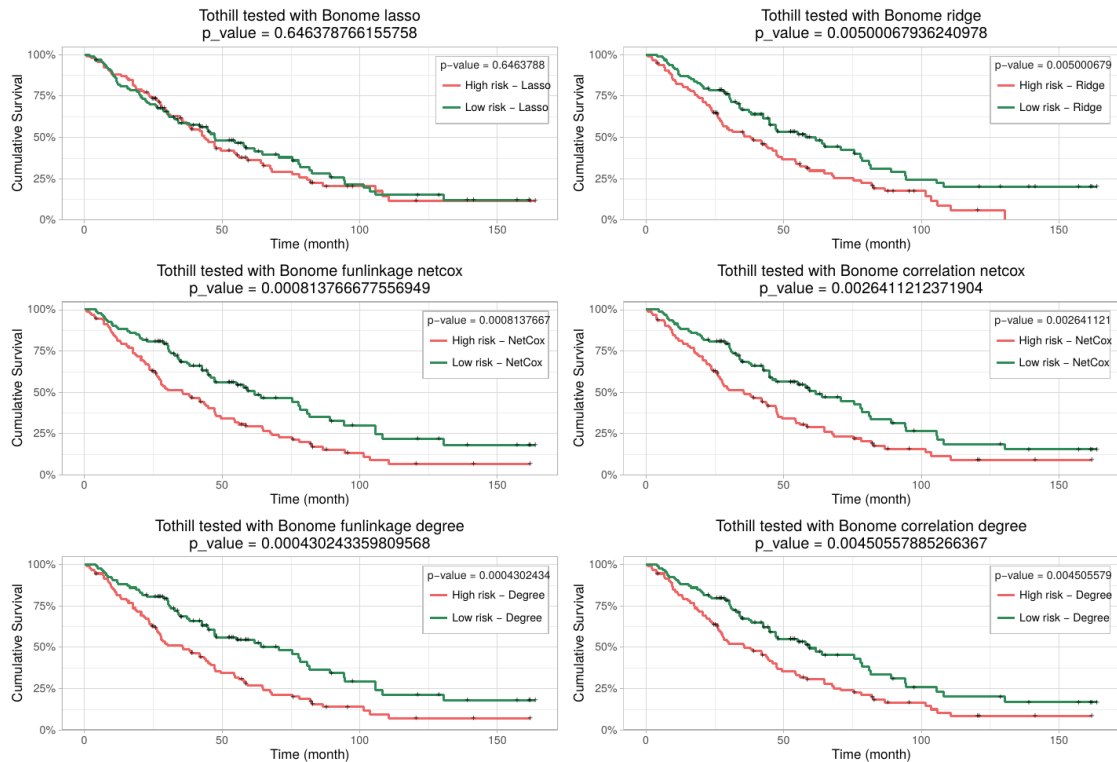


## Testing dataset: Tothill



## B3) Training dataset: Tothill

### Testing dataset: Bonome



## Testing dataset: TCGA

