

Appendix

SEARCH QUERY:

(spinal OR SCI OR SCIs OR neurogenic OR bladder OR urinary OR urethral OR dysfunction)

AND

(hydrophilic OR LoFric OR coated OR POBE OR polyolefin based elastomer OR polyolefin-based elastomer OR PVC free OR PVC-free OR Speedicath OR Easicath)

AND

(standard OR conventional OR plastic OR polyethylene OR PVC OR polyvinyl OR nonhydrophilic OR non hydrophilic OR non-hydrophilic OR non coated OR non-coated)

AND

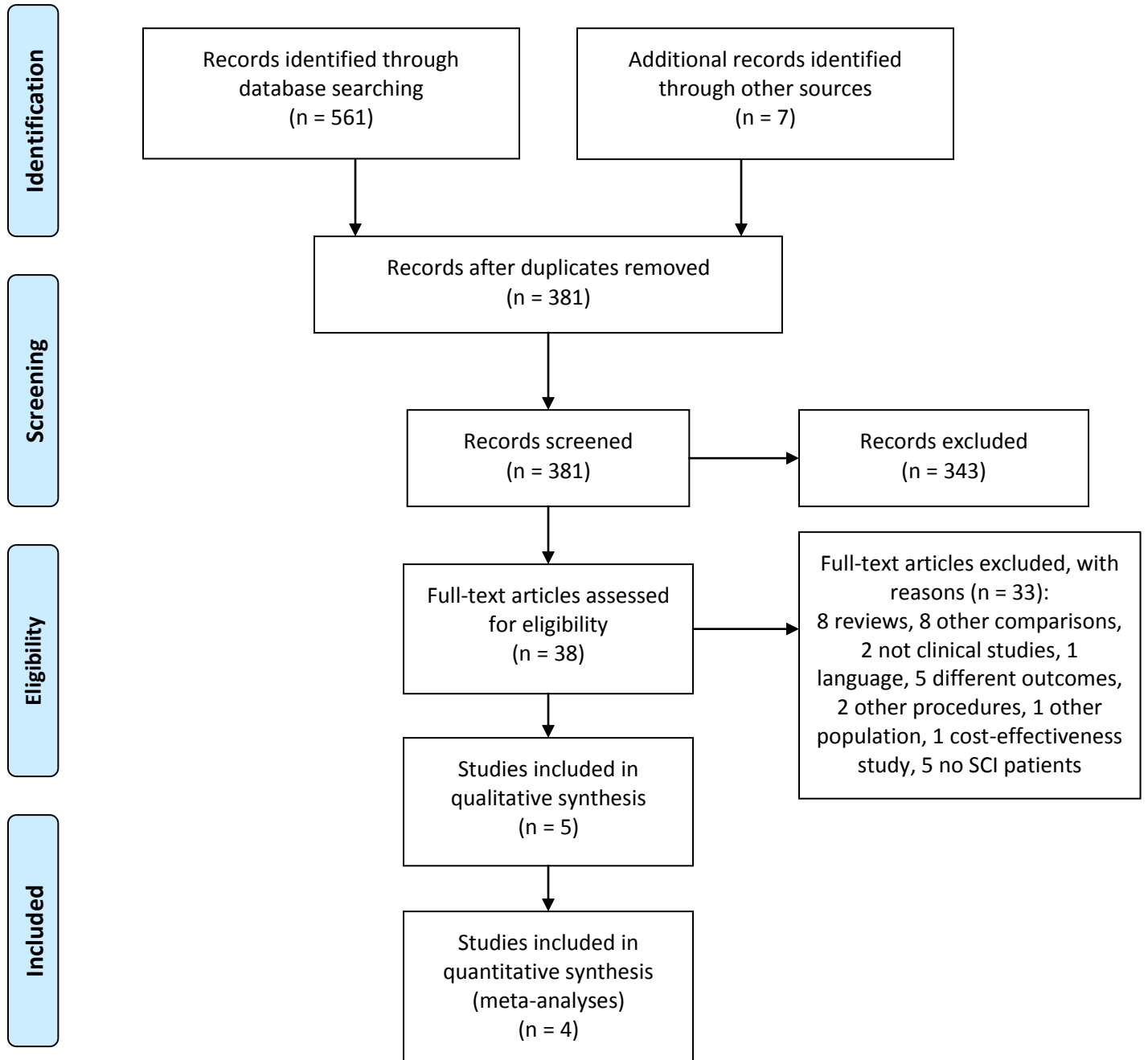
(intermittent OR catheter*)

AND

(urinary tract infection* OR UTI OR UTIs OR infection* OR urethral trauma OR stricture* OR hematuria OR quality of life OR QOL OR QALY OR QALYs)



PRISMA Flow Diagram



CHEERS Checklist**Items to include when reporting economic evaluations of health interventions**

The **ISPOR CHEERS Task Force Report**, *Consolidated Health Economic Evaluation Reporting Standards (CHEERS)—Explanation and Elaboration: A Report of the ISPOR Health Economic Evaluations Publication Guidelines Good Reporting Practices Task Force*, provides examples and further discussion of the 24-item CHEERS Checklist and the CHEERS Statement. It may be accessed via the *Value in Health* or via the ISPOR Health Economic Evaluation Publication Guidelines – CHEERS: Good Reporting Practices webpage: <http://www.ispor.org/TaskForces/EconomicPubGuidelines.asp>

Section/item	Item No	Recommendation	Reported on page No/line No
Title and abstract			
Title	1	Identify the study as an economic evaluation or use more specific terms such as “cost-effectiveness analysis”, and describe the interventions compared.	page 1
Abstract	2	Provide a structured summary of objectives, perspective, setting, methods (including study design and inputs), results (including base case and uncertainty analyses), and conclusions.	pages 2-3
Introduction			
Background and objectives	3	Provide an explicit statement of the broader context for the study. Present the study question and its relevance for health policy or practice decisions.	from page 4
Methods			
Target population and subgroups	4	Describe characteristics of the base case population and subgroups analysed, including why they were chosen.	from page 6
Setting and location	5	State relevant aspects of the system(s) in which the decision(s) need(s) to be made.	page 13
Study perspective	6	Describe the perspective of the study and relate this to the costs being evaluated.	page 13
Comparators	7	Describe the interventions or strategies being compared and state why they were chosen.	page 6
Time horizon	8	State the time horizon(s) over which costs and consequences are being evaluated and say why appropriate.	page 9
Discount rate	9	Report the choice of discount rate(s) used for costs and outcomes and say why appropriate.	page 15
Choice of health outcomes	10	Describe what outcomes were used as the measure(s) of benefit in the evaluation and their relevance for the type of analysis performed.	page 9
Measurement of effectiveness	11a	<i>Single study-based estimates:</i> Describe fully the design features of the single effectiveness study and why the single study was a sufficient source of clinical effectiveness data.	

	11b	<i>Synthesis-based estimates:</i> Describe fully the methods used for identification of included studies and synthesis of clinical effectiveness data.	pages 6-9
Measurement and valuation of preference based outcomes	12	If applicable, describe the population and methods used to elicit preferences for outcomes.	pages 14-15
Estimating resources and costs	13a	<i>Single study-based economic evaluation:</i> Describe approaches used to estimate resource use associated with the alternative interventions. Describe primary or secondary research methods for valuing each resource item in terms of its unit cost. Describe any adjustments made to approximate to opportunity costs.	
	13b	<i>Model-based economic evaluation:</i> Describe approaches and data sources used to estimate resource use associated with model health states. Describe primary or secondary research methods for valuing each resource item in terms of its unit cost. Describe any adjustments made to approximate to opportunity costs.	pages 13-14
Currency, price date, and conversion	14	Report the dates of the estimated resource quantities and unit costs. Describe methods for adjusting estimated unit costs to the year of reported costs if necessary. Describe methods for converting costs into a common currency base and the exchange rate.	page 13
Choice of model	15	Describe and give reasons for the specific type of decision-analytical model used. Providing a figure to show model structure is strongly recommended.	pages 9-10
Assumptions	16	Describe all structural or other assumptions underpinning the decision-analytical model.	pages 9-15
Analytical methods	17	Describe all analytical methods supporting the evaluation. This could include methods for dealing with skewed, missing, or censored data; extrapolation methods; methods for pooling data; approaches to validate or make adjustments (such as half cycle corrections) to a model; and methods for handling population heterogeneity and uncertainty.	pages 6-9, 15
Results			
Study parameters	18	Report the values, ranges, references, and, if used, probability distributions for all parameters. Report reasons or sources for distributions used to represent uncertainty where appropriate. Providing a table to show the input values is strongly recommended.	page 15 and Suppl. Table 4
Incremental costs and outcomes	19	For each intervention, report mean values for the main categories of estimated costs and outcomes of interest, as well as mean differences between the comparator groups. If applicable, report incremental cost-effectiveness ratios.	pages 17-18
Characterising uncertainty	20a	<i>Single study-based economic evaluation:</i> Describe the effects of sampling uncertainty for the estimated incremental cost and incremental effectiveness parameters, together with the impact	

		of methodological assumptions (such as discount rate, study perspective).	
	20b	<i>Model-based economic evaluation</i> : Describe the effects on the results of uncertainty for all input parameters, and uncertainty related to the structure of the model and assumptions.	pages 18-20
Characterising heterogeneity	21	If applicable, report differences in costs, outcomes, or cost-effectiveness that can be explained by variations between subgroups of patients with different baseline characteristics or other observed variability in effects that are not reducible by more information.	
Discussion			
Study findings, limitations, generalisability, and current knowledge	22	Summarise key study findings and describe how they support the conclusions reached. Discuss limitations and the generalisability of the findings and how the findings fit with current knowledge.	pages 23-26
Other			
Source of funding	23	Describe how the study was funded and the role of the funder in the identification, design, conduct, and reporting of the analysis. Describe other non-monetary sources of support.	page 27
Conflicts of interest	24	Describe any potential for conflict of interest of study contributors in accordance with journal policy. In the absence of a journal policy, we recommend authors comply with International Committee of Medical Journal Editors recommendations.	

For consistency, the CHEERS Statement checklist format is based on the format of the CONSORT statement checklist

The **ISPOR CHEERS Task Force Report** provides examples and further discussion of the 24-item CHEERS Checklist and the CHEERS Statement. It may be accessed via the *Value in Health* link or via the ISPOR Health Economic Evaluation Publication Guidelines – CHEERS: Good Reporting Practices webpage: <http://www.ispor.org/TaskForces/EconomicPubGuidelines.asp>

The citation for the CHEERS Task Force Report is:

Husereau D, Drummond M, Petrou S, et al. Consolidated health economic evaluation reporting standards (CHEERS)—Explanation and elaboration: A report of the ISPOR health economic evaluations publication guidelines good reporting practices task force. *Value Health* 2013;16:231-50.

