

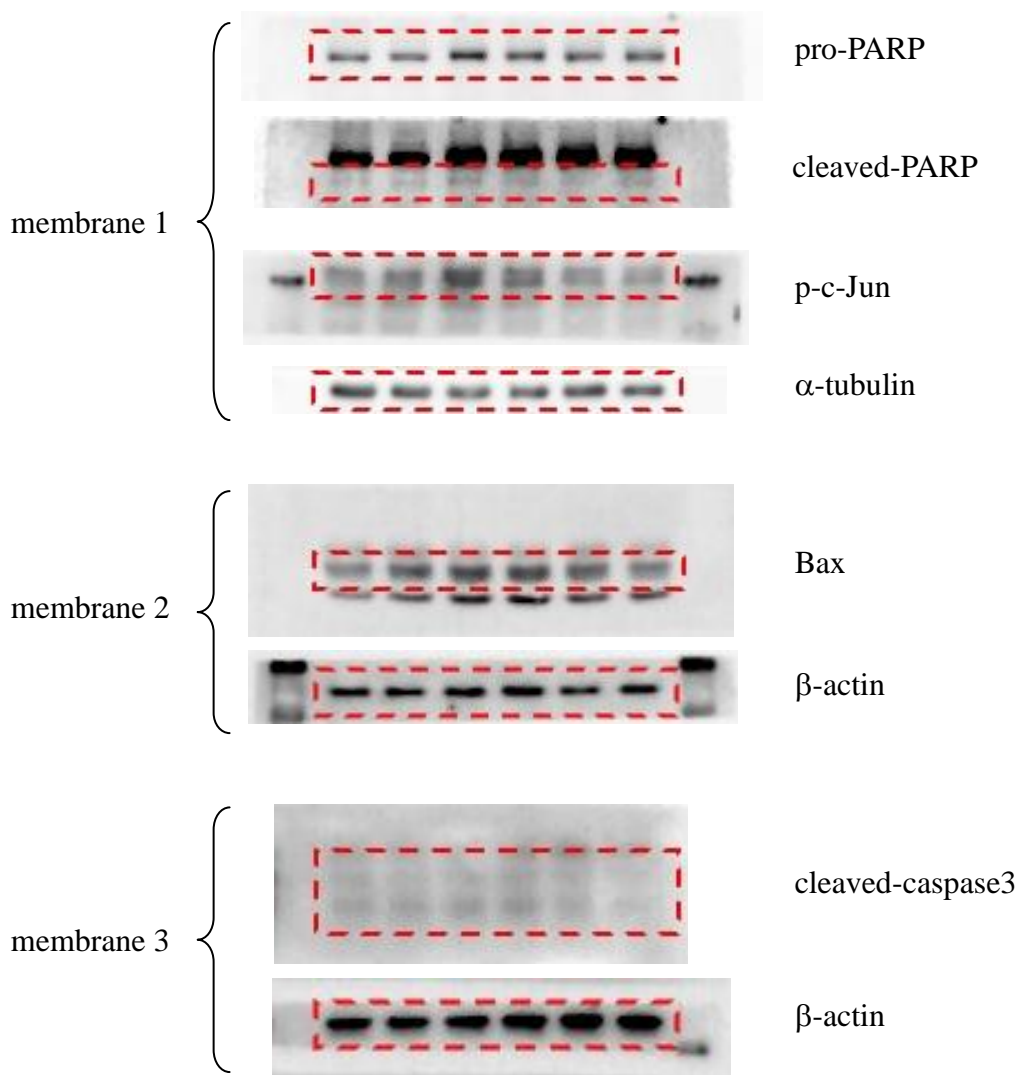
Supplementary Information

The natural retinoprotectant chrysophanol attenuated photoreceptor cell apoptosis in an *N*-methyl-*N*-nitrosourea-induced mouse model of retinal degeneration

Fan-Li Lin¹, Cheng-Hui Lin², Jau-Der Ho³, Jing-Lun Yen¹, Hung-Ming Chang⁴, George C.Y. Chiou⁵, Yu-Wen Cheng^{2,†}, George Hsiao^{1,*,†}

¹Graduate Institute of Medical Sciences and Department of Pharmacology, School of Medicine, College of Medicine, Taipei Medical University, Taipei, Taiwan; ²School of Pharmacy, College of Pharmacy, Taipei Medical University, Taipei, Taiwan; ³Department of Ophthalmology, Taipei Medical University Hospital, Taipei, Taiwan; ⁴Department of Anatomy, School of Medicine, College of Medicine, Taipei Medical University, Taipei, Taiwan; ⁵Department of Neuroscience and Experimental Therapeutics and Institute of Ocular Pharmacology, College of Medicine, Texas A&M Health Science Center, College Station, TX, USA. *Corresponding author. †

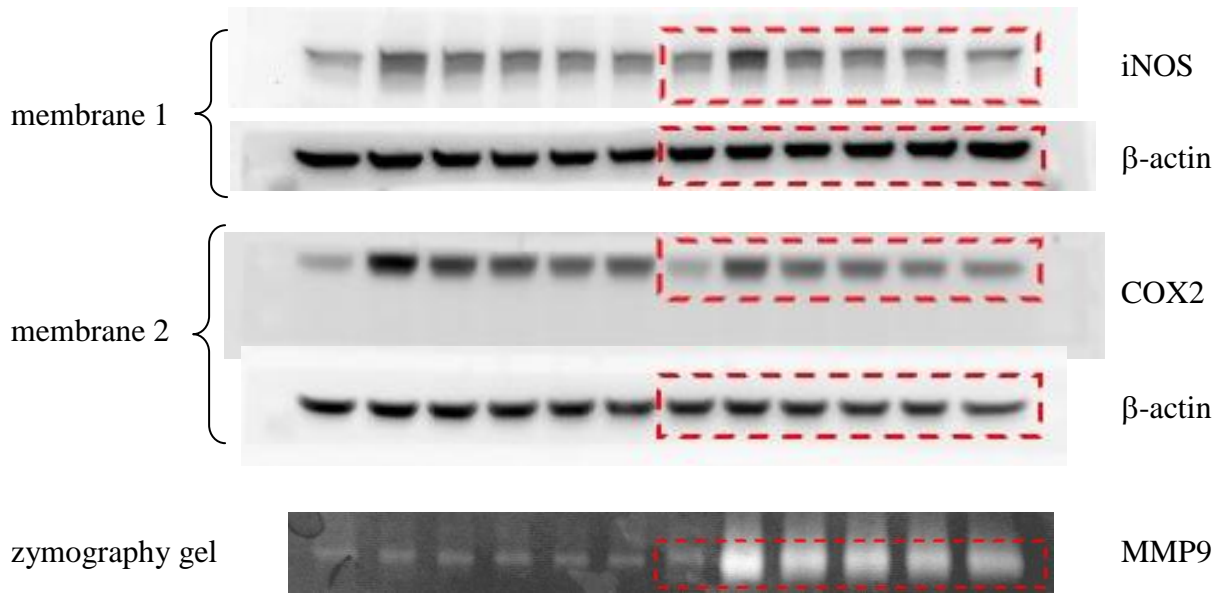
The authors contributed equally to this work.



Supplementary Figure S1. Full-length western blot images of Figure 6.



Supplementary Figure S2. Full-length zymography images of Figure 7.



Supplementary Figure S3. Full-length western blot and zymography images of Figure 8.