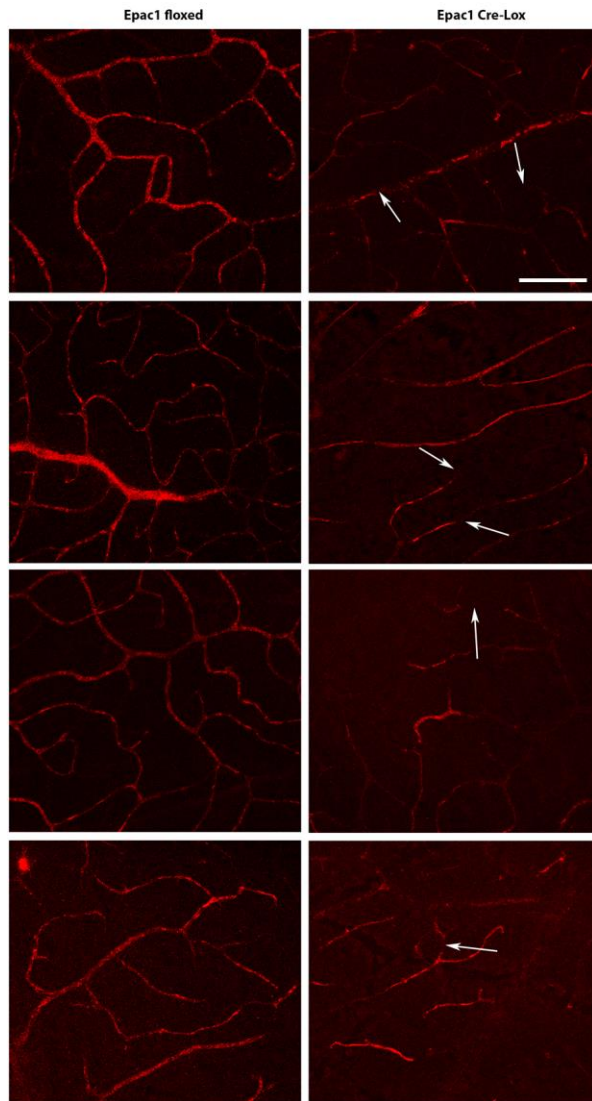
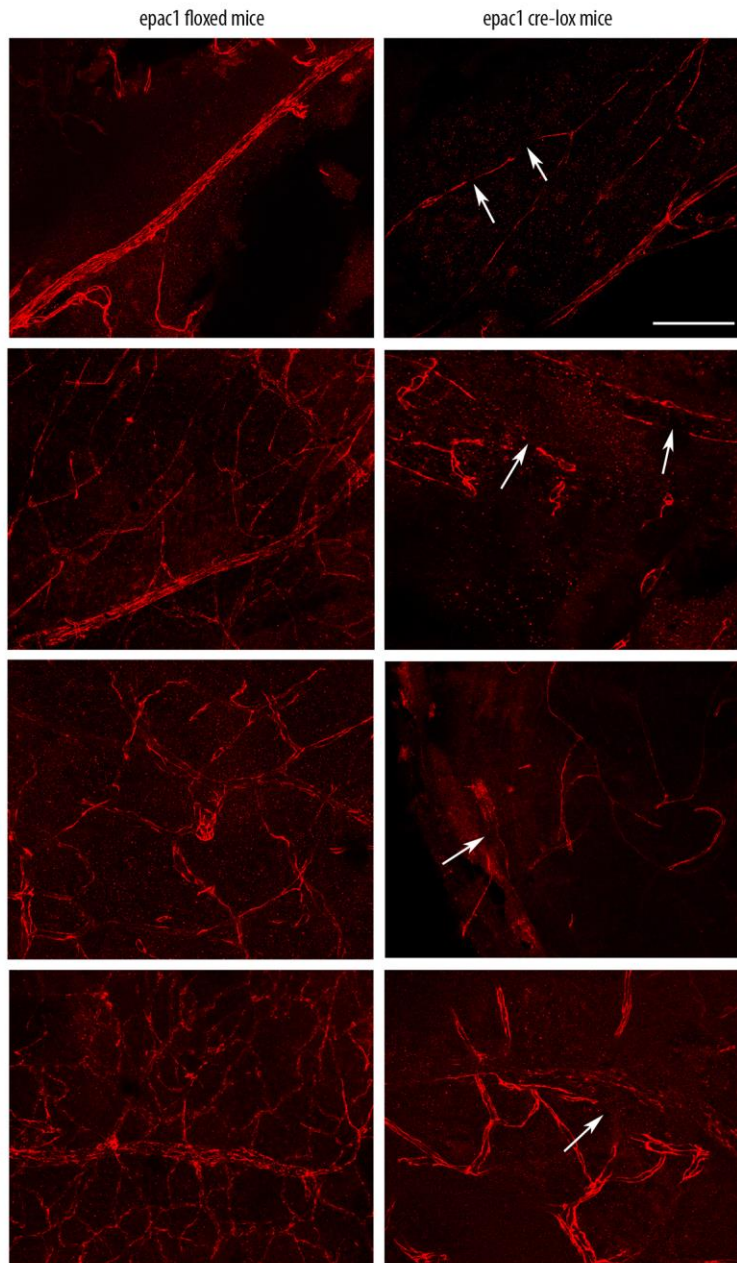


Supplemental Figure 1



Supplemental Figure 1. Representative ZO-1 immunostaining from all 4 Epac1 floxed and Epac1 Cre-Lox mice. Scale bar is 50um. Arrows show locations of gaps in staining.

Supplemental Figure 2



Supplementary Figure 2. Representative occludin immunostaining from all 4 Epac1 floxed and Epac1 Cre-Lox mice. Scale bar is 50um. Arrows show locations of gaps in staining.