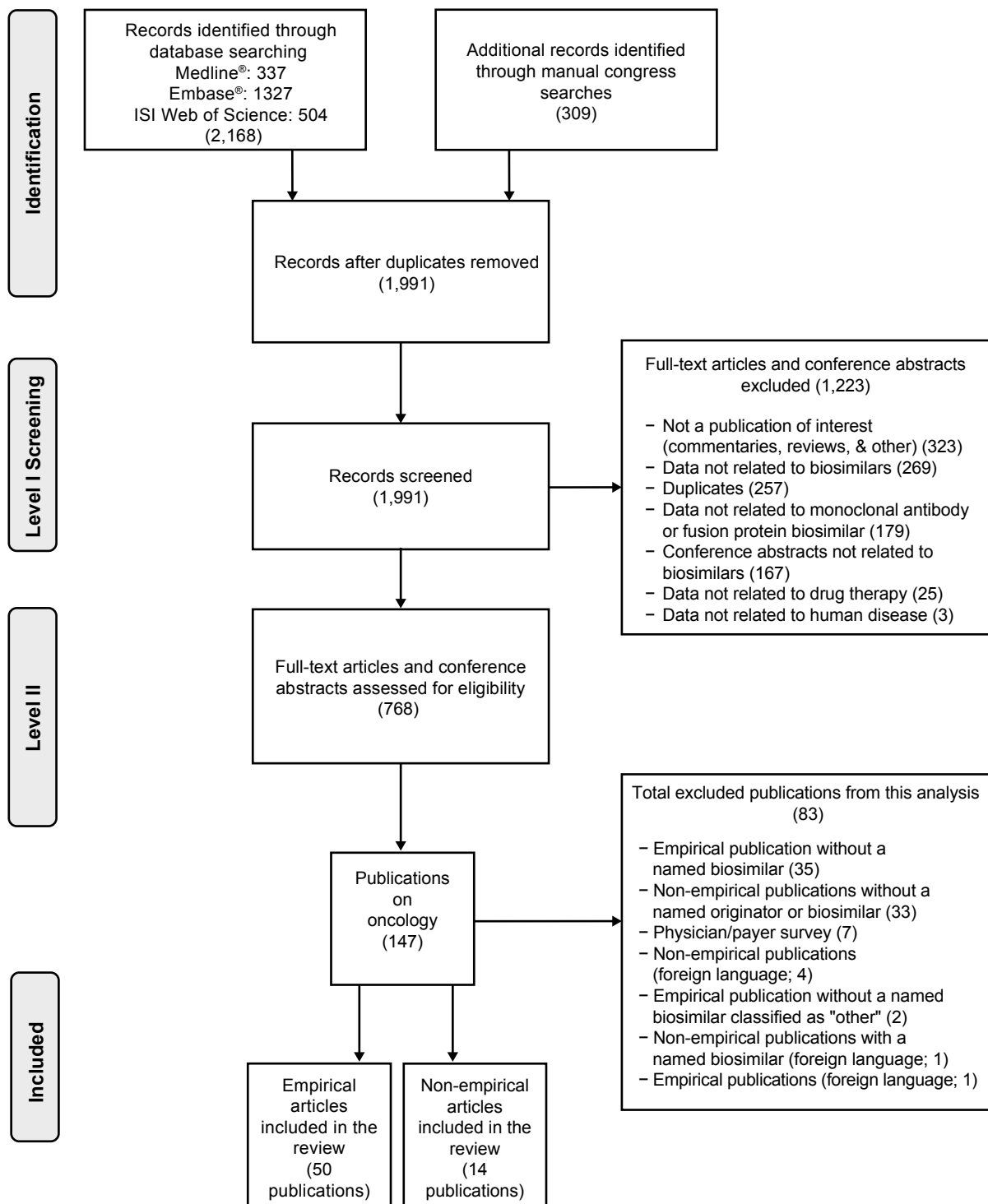


**Supplementary Fig. S2** PRISMA flow diagram for studies and publications in oncology. This diagram shows the high-level breakdown of the publication counts. Where encore publications were retrieved for studies, the information was compared with the original (first published article) and excluded if no additional data were provided. If new data were identified, encore publications were included along with the original publication. This would be reflected in the overall publication count but not in the overall study count.



PRISMA Preferred Reporting Items for Systematic Reviews and Meta-Analyses.

Note: Of the total number of empirical articles included in the review ( $n = 50$ ), 23 studies (36 publications) were specific to oncology and 10 studies (14 publications) were relevant to both oncology and chronic inflammatory diseases.