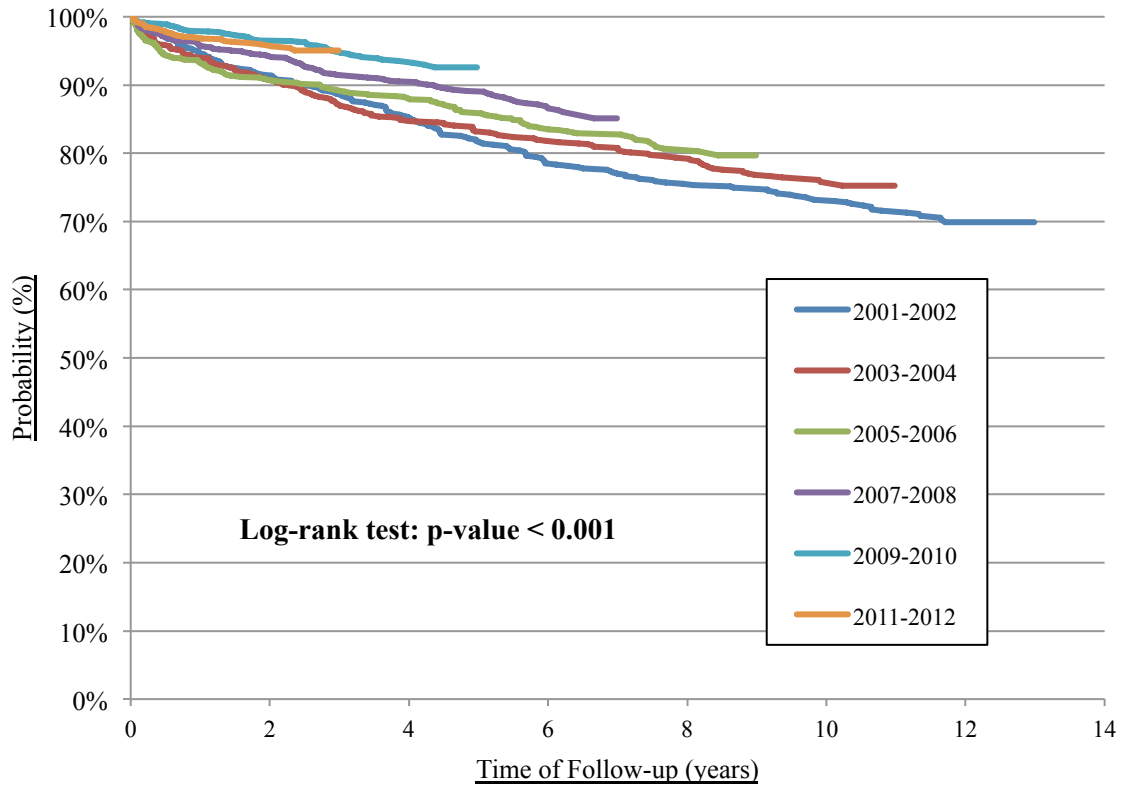


SUPPLEMENTAL FIGURES AND APPENDICES.

Supplemental Figure 1. Probability of Surviving stratified by Year of Initiation of ART



APPENDIX 1. ICD-10 Codes for Specific Causes of Death

ICD-10 codes for specific causes of death are listed below:

1. HIV-related disease (B20-B24)
2. Infectious and parasitic disease (not HIV-related; A00-B99, G14 excluding B18 and B20-B24)
 - Including Pneumonia/Influenza (J09-J181, J188, J189)
3. Malignant Neoplasms (not HIV-related; C00-C97)
4. Cardiovascular Disease (I00-I51) - including
 - § Cerebrovascular Disease (I60-I69)
 - § Diseases of Circulatory System, including cardiovascular and cerebrovascular (I00-I99)
5. Chronic Diseases of Respiratory System, excluding pneumonia (J00-J98) - including
 - Chronic Pulmonary Disease (J40-J44)
6. Chronic Liver Disease/Cirrhosis (K70, K73-74, K760-K761) - including
 - Chronic Viral Hepatitis (B18)
 - Chronic Liver Disease/Cirrhosis AND Chronic Viral Hepatitis
 - Diseases of digestive system, including chronic liver disease and viral hepatitis (K00-K93)
7. Unintentional Injuries (V01-X59, Y40-Y86, Y880-Y883)
 - Including drug overdoses
 - External Causes of Death, excluding all suicide codes (see group 8)
8. Suicide ((X40-X42, X46, X47, X60-84, Y10-Y12, Y16, Y17 and Y870)
9. Other Causes of Death