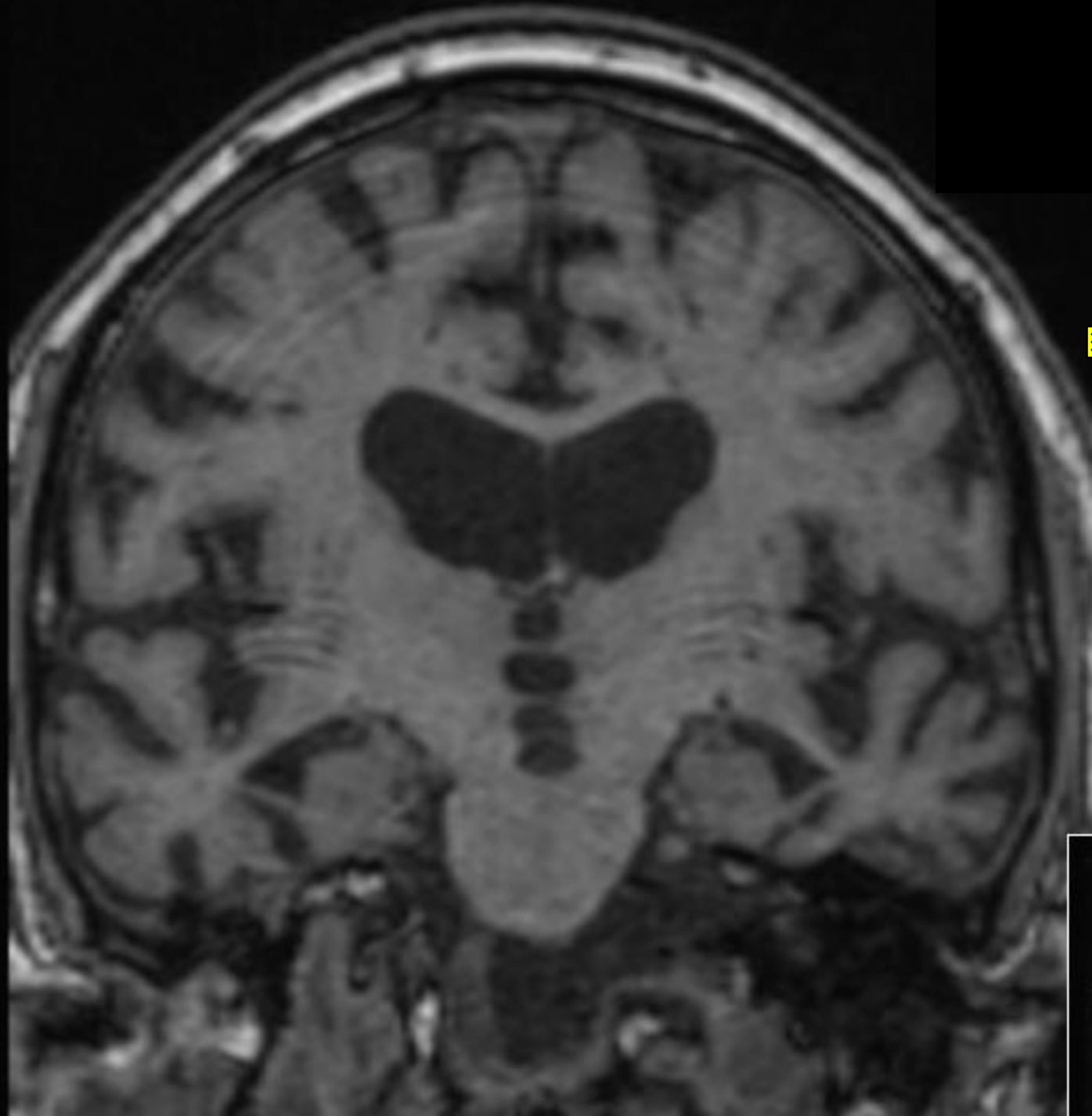
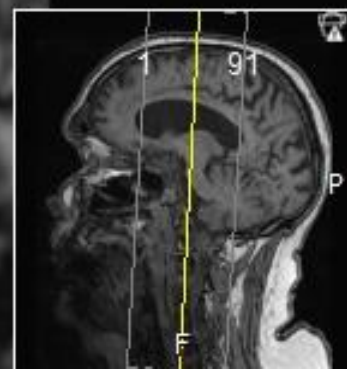


1



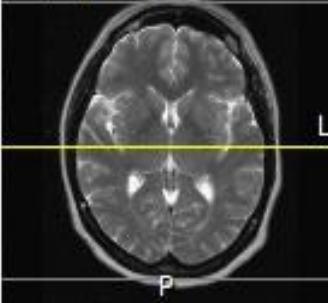
Cor>Tra 4
>Sag -0



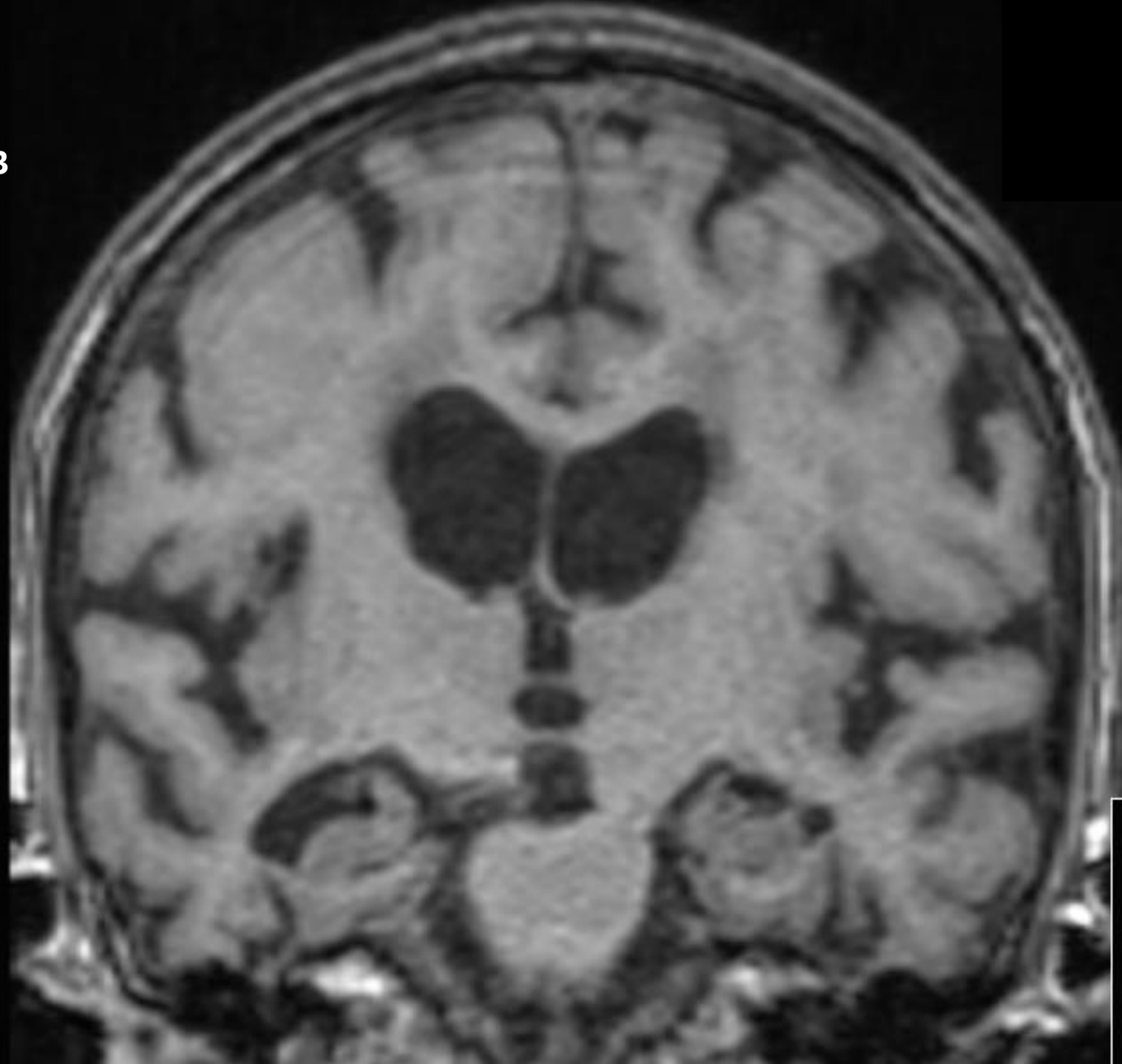
2



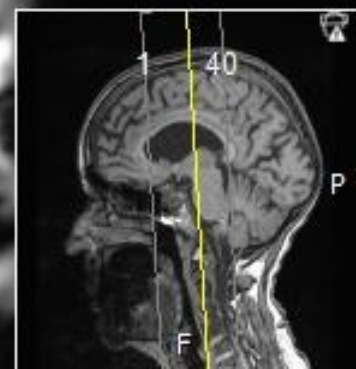
1/3



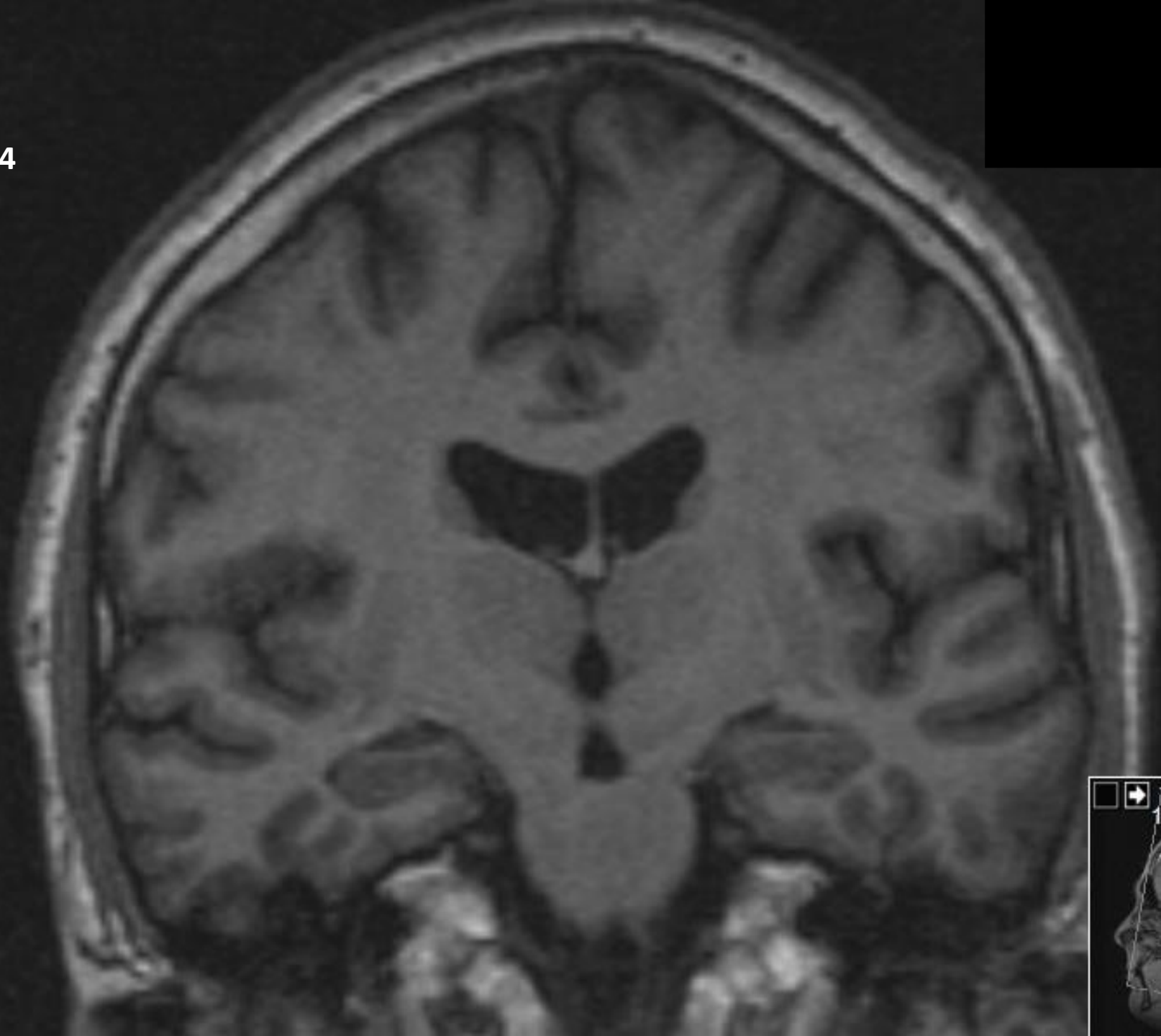
3



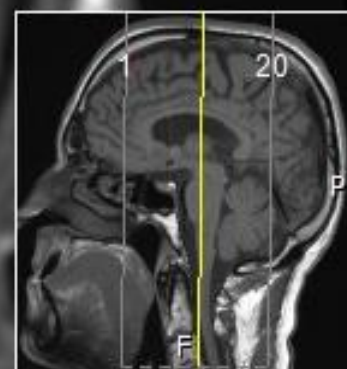
Cor>Tra -
>Sag -1



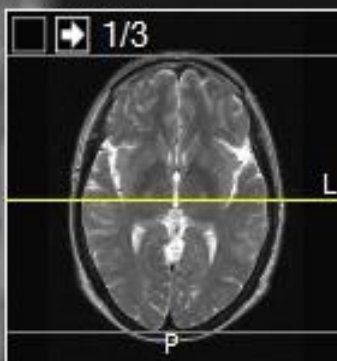
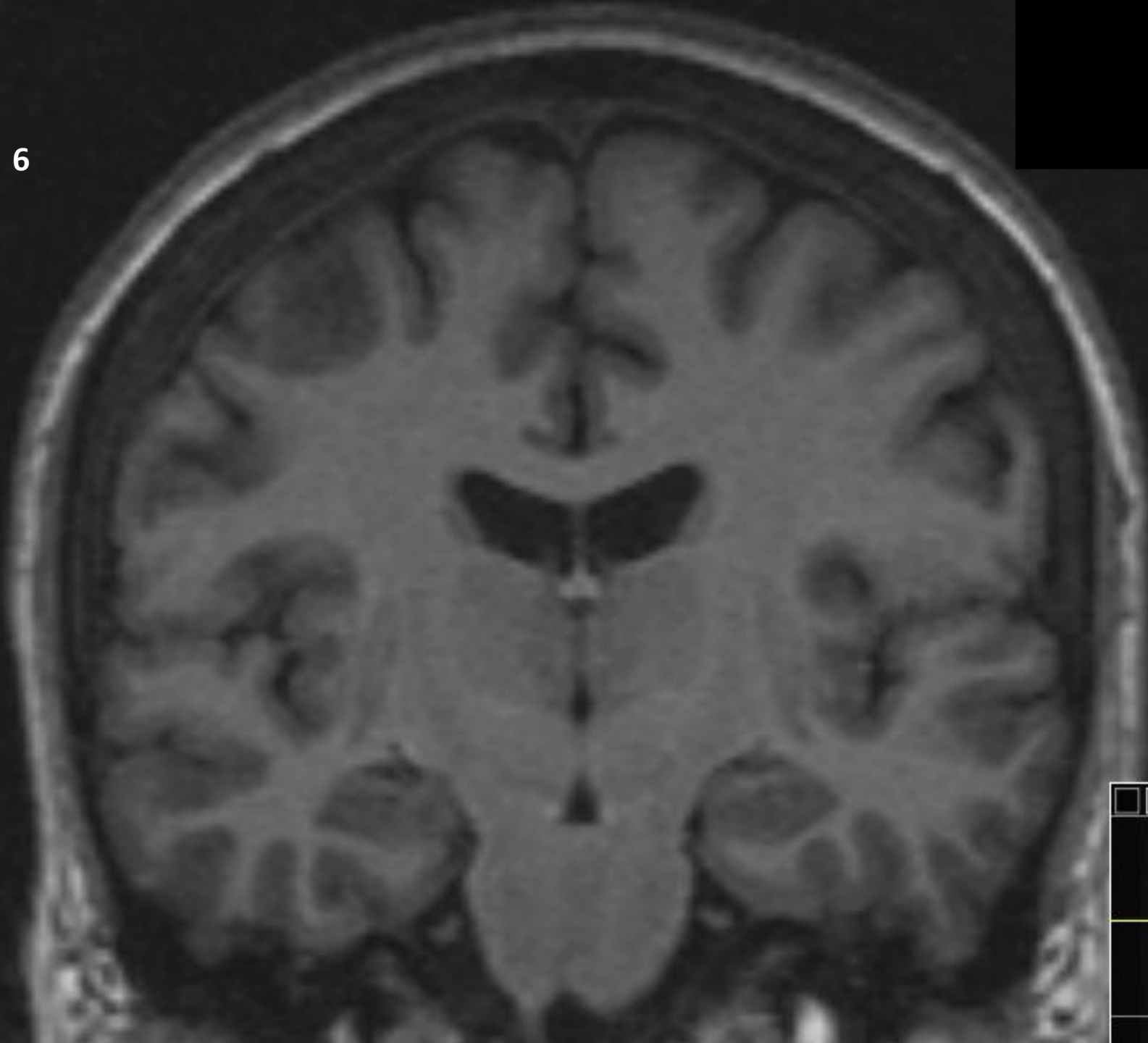
4



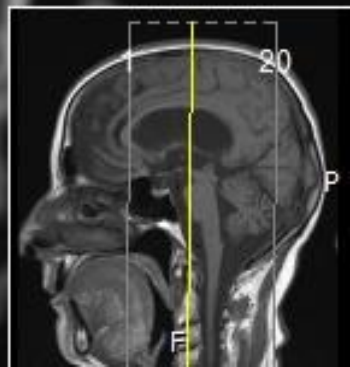
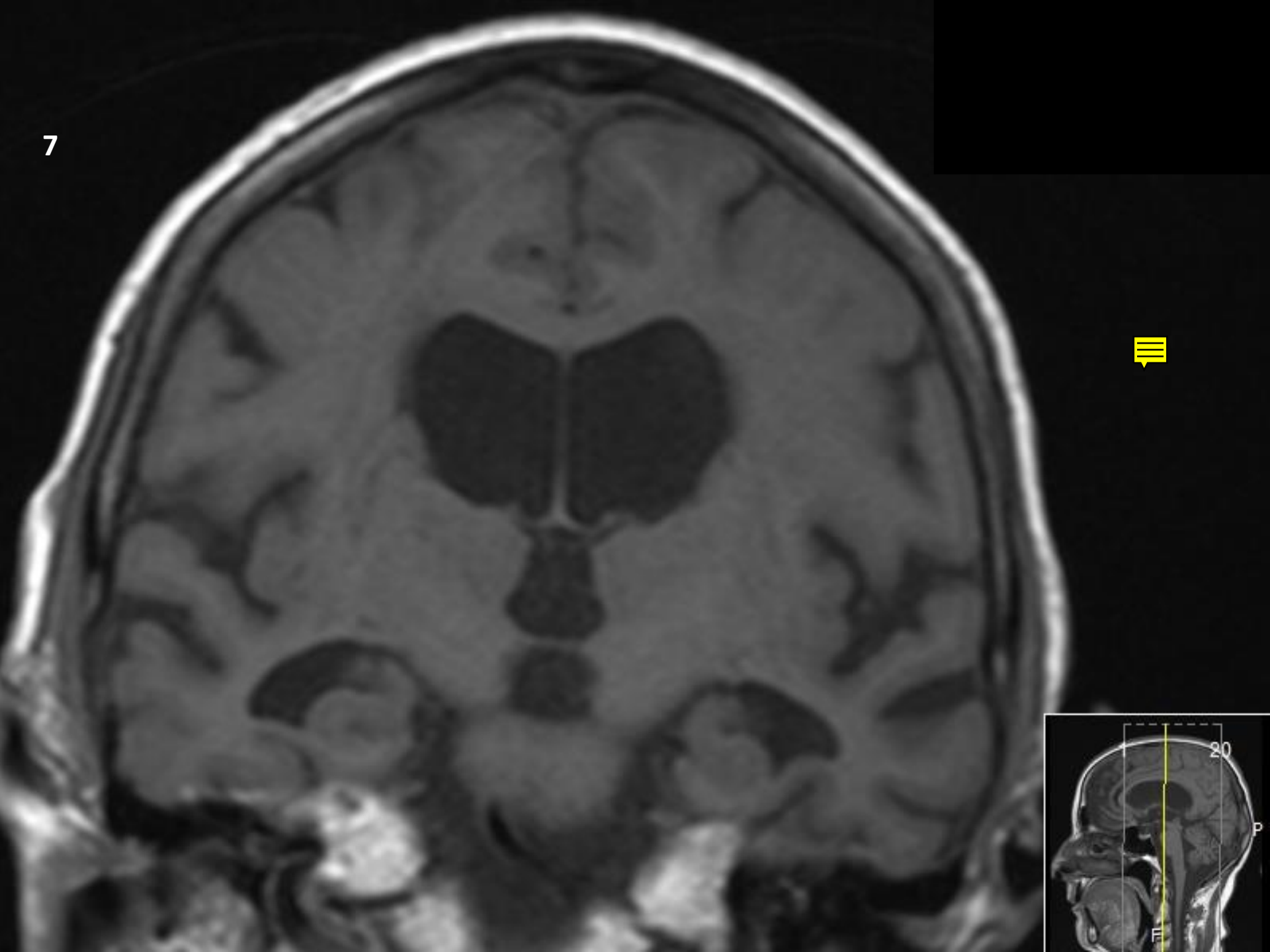
5



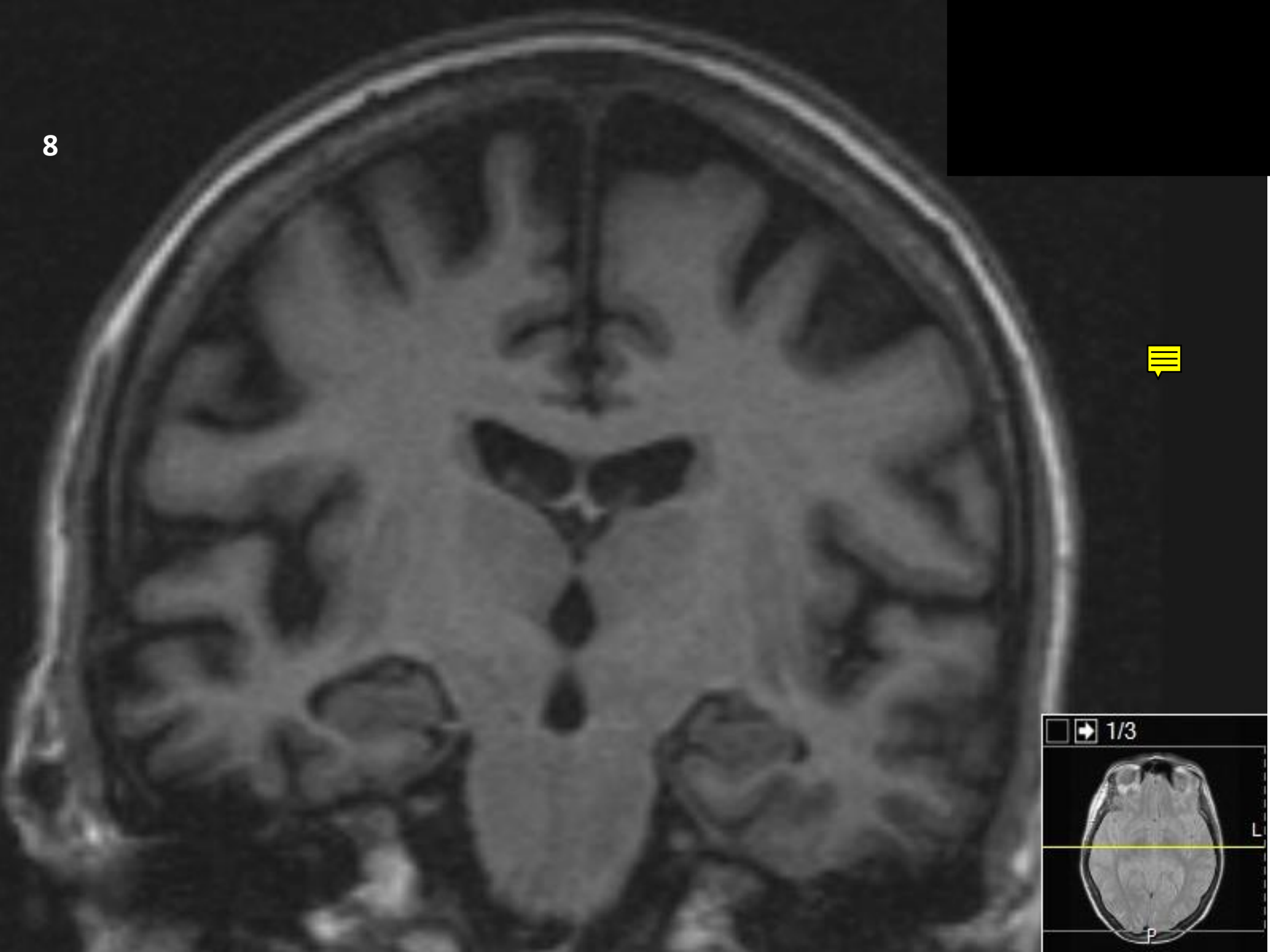
6



7



8

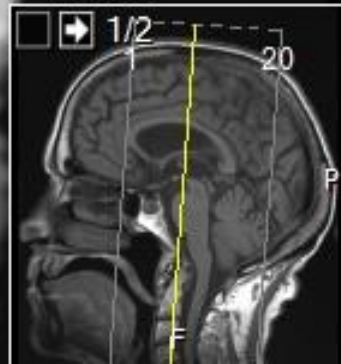
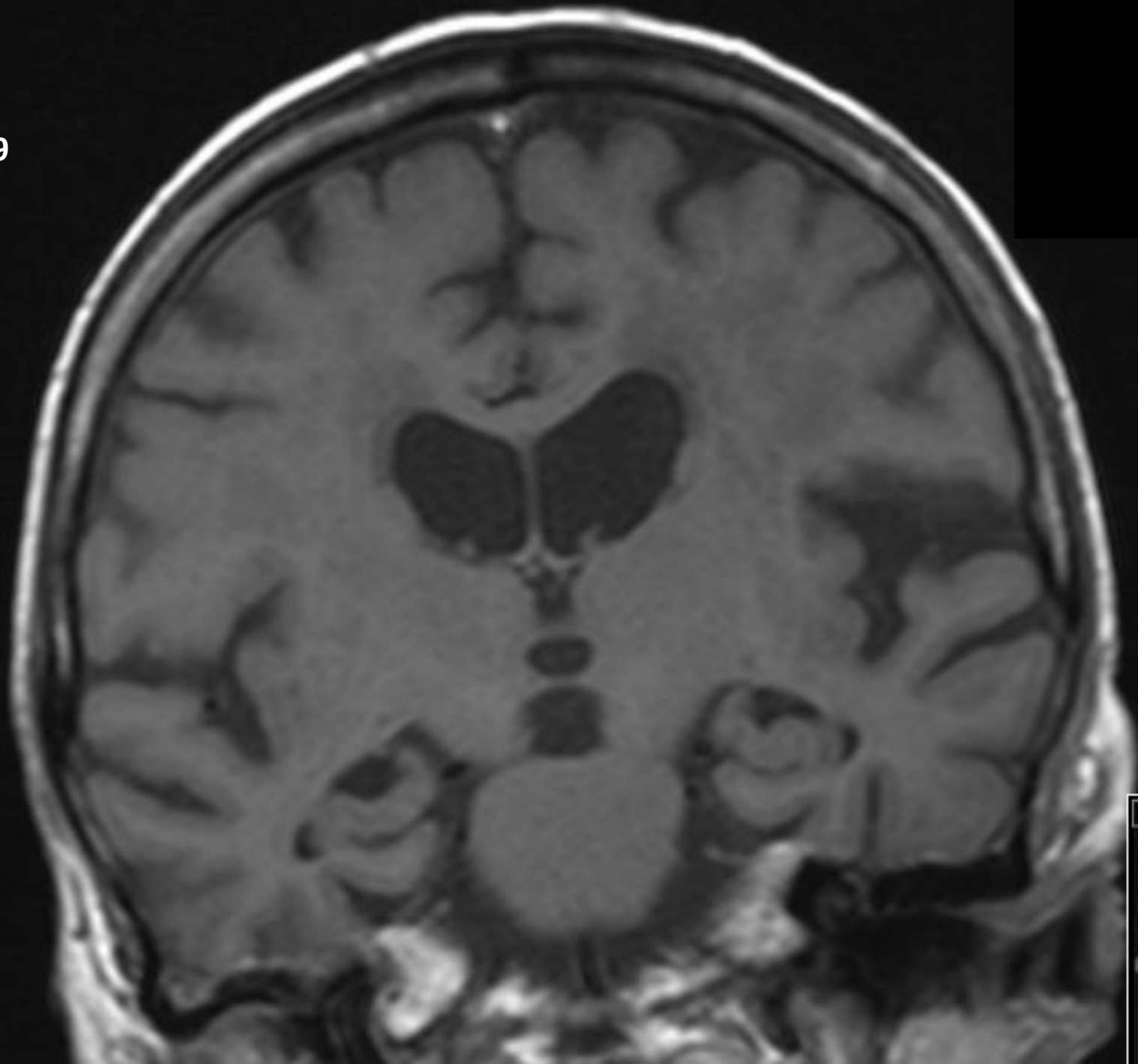


1/3

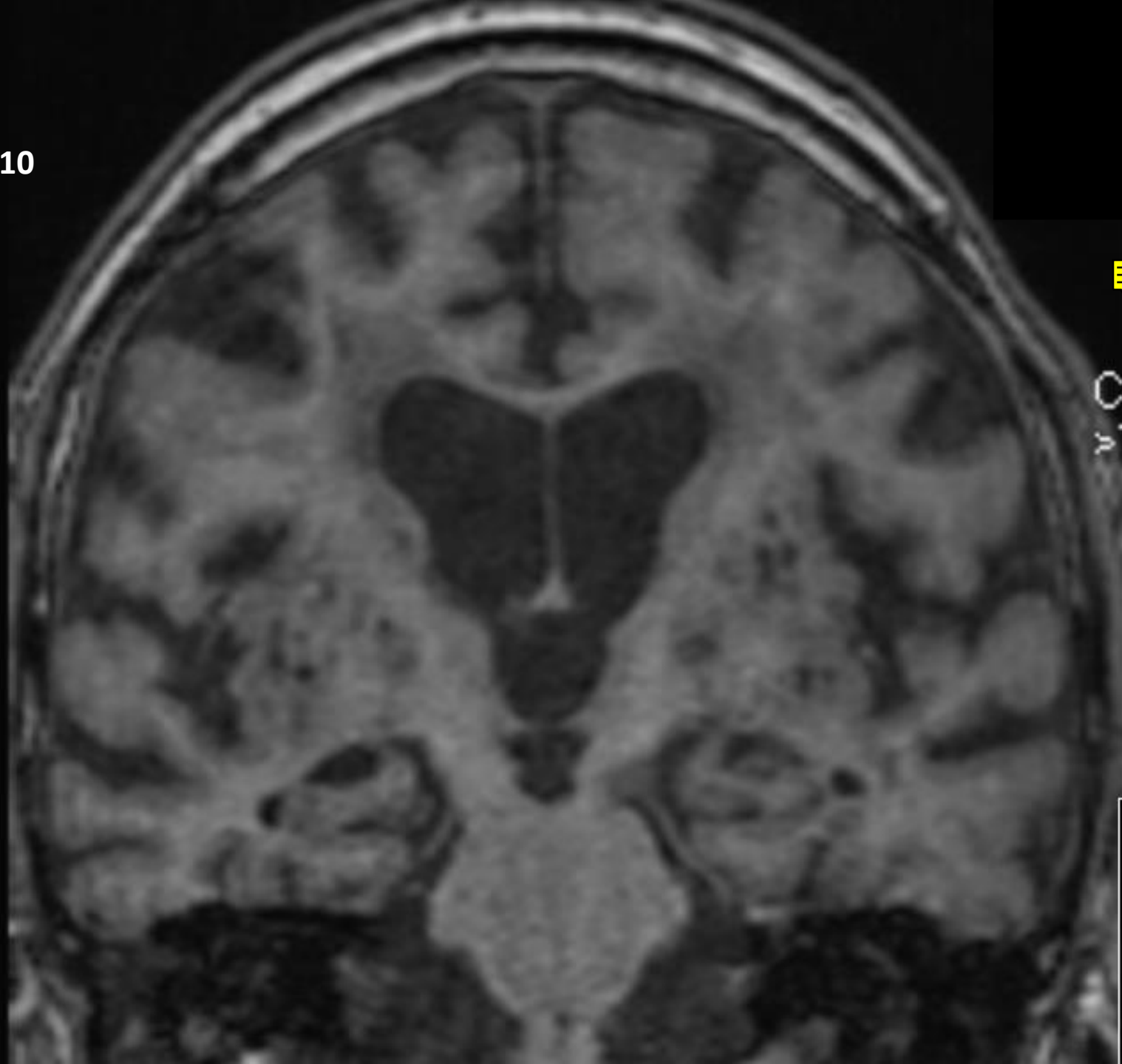
L
P

This inset shows an axial MRI slice of the brain. A horizontal yellow line is drawn across the slice, indicating the plane of the coronal view shown in the main image. The slice is labeled with 'L' for left and 'P' for posterior.

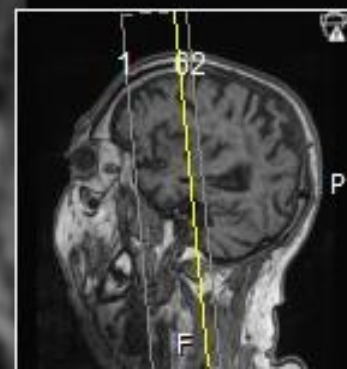
9



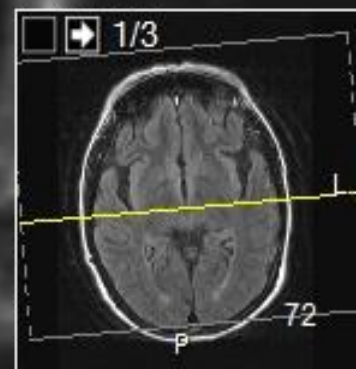
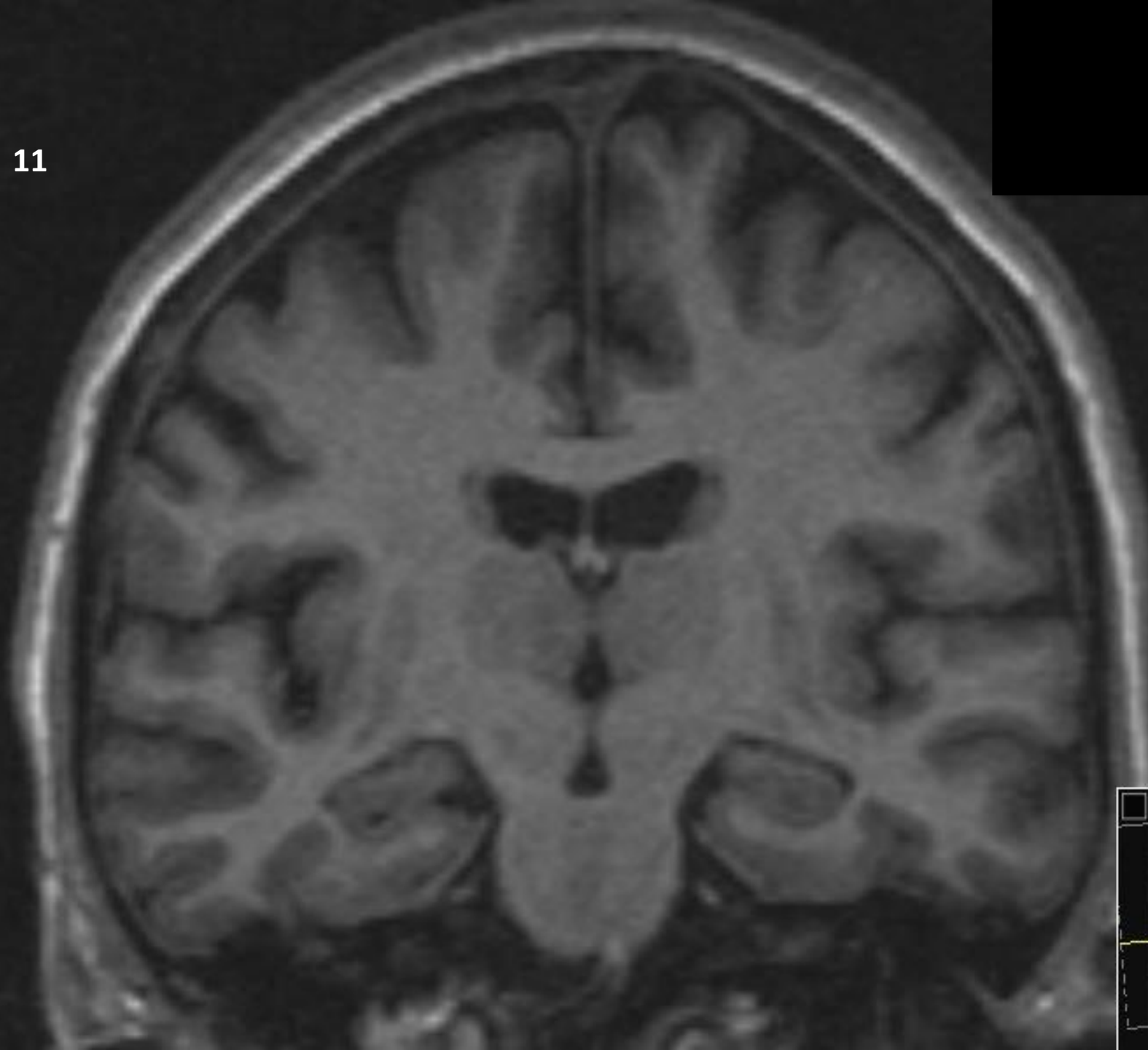
10



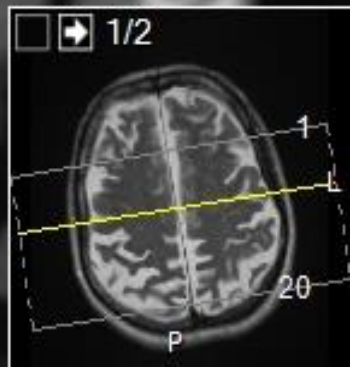
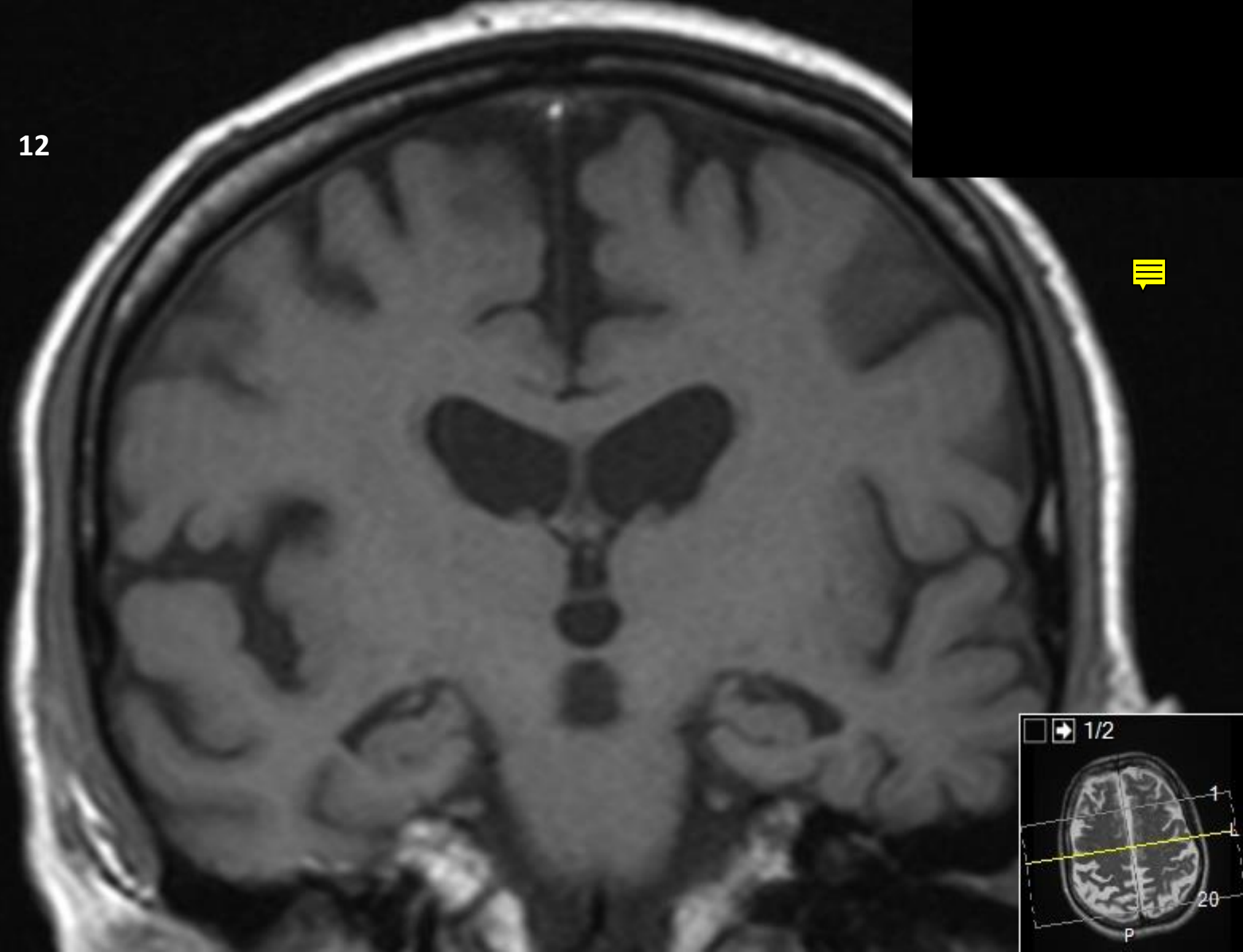
Cor>Sag -10
>Tra -6



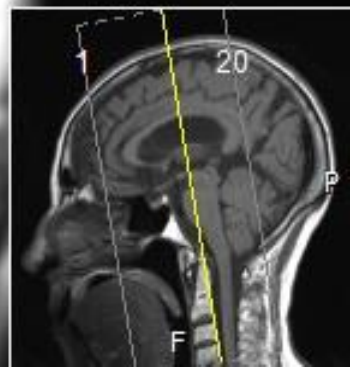
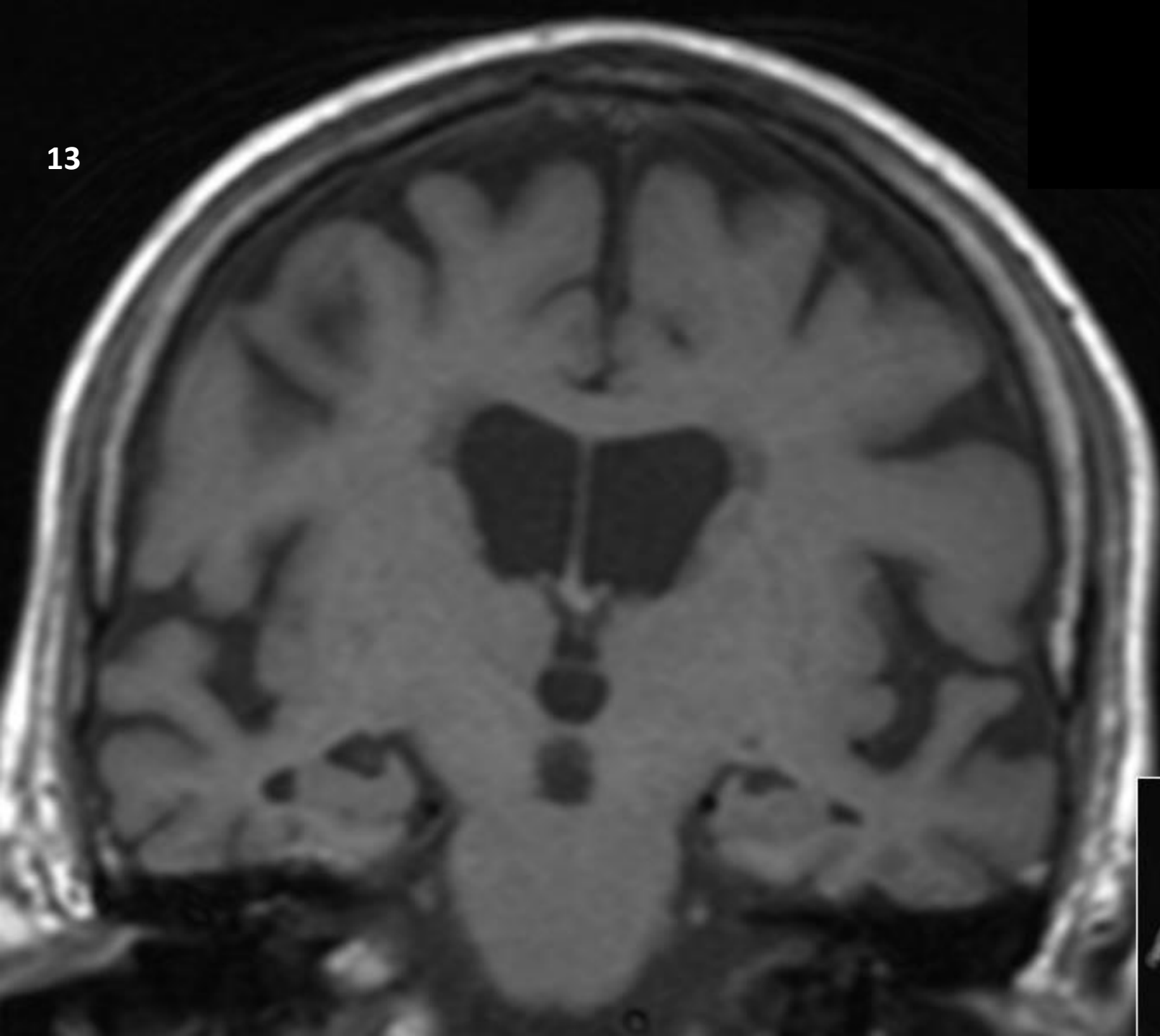
11



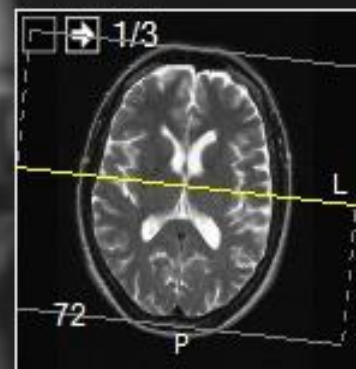
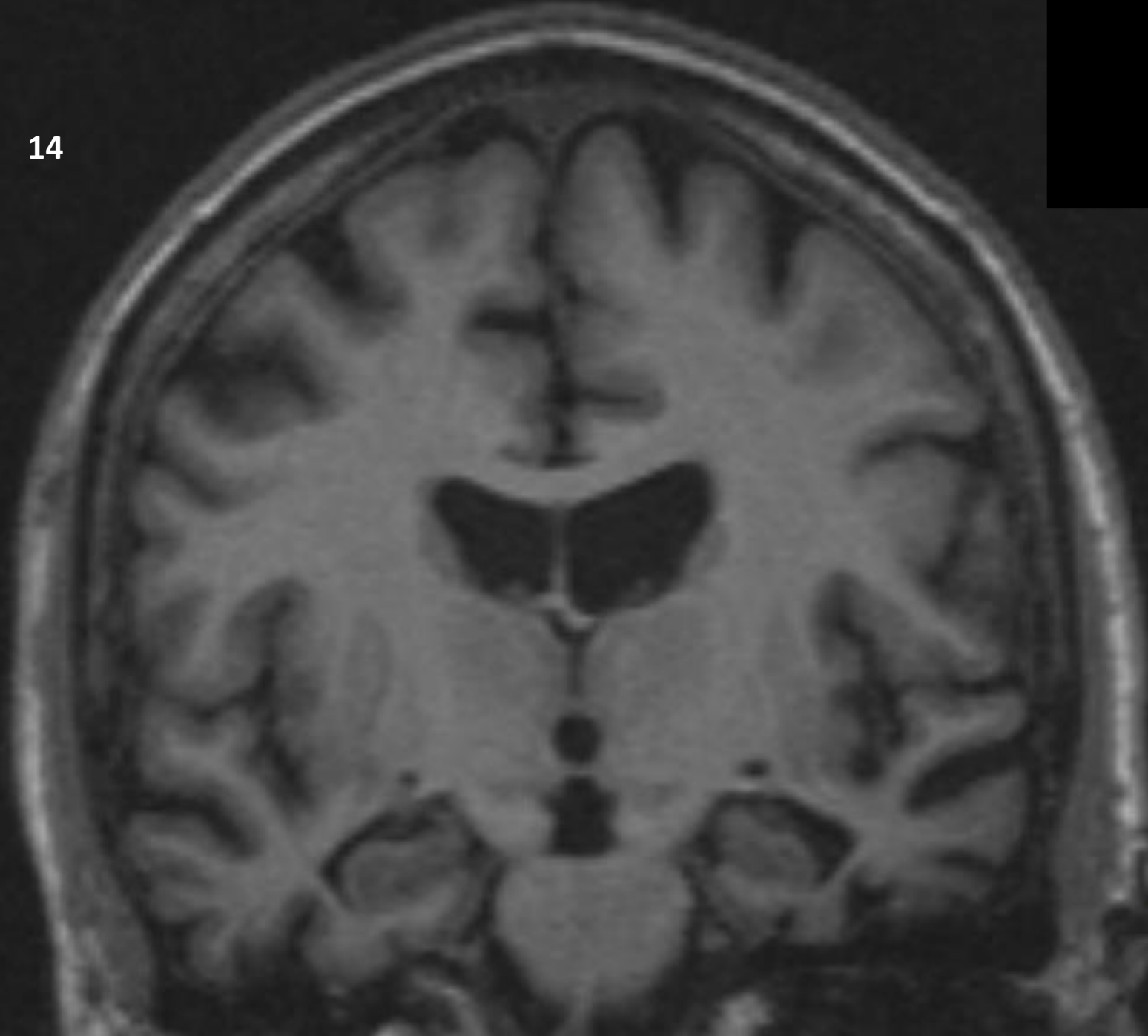
12



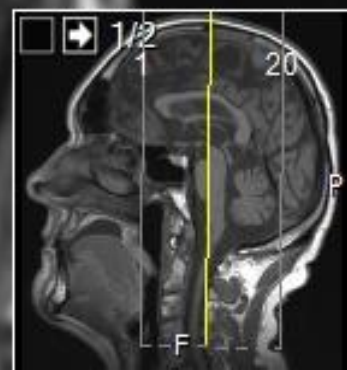
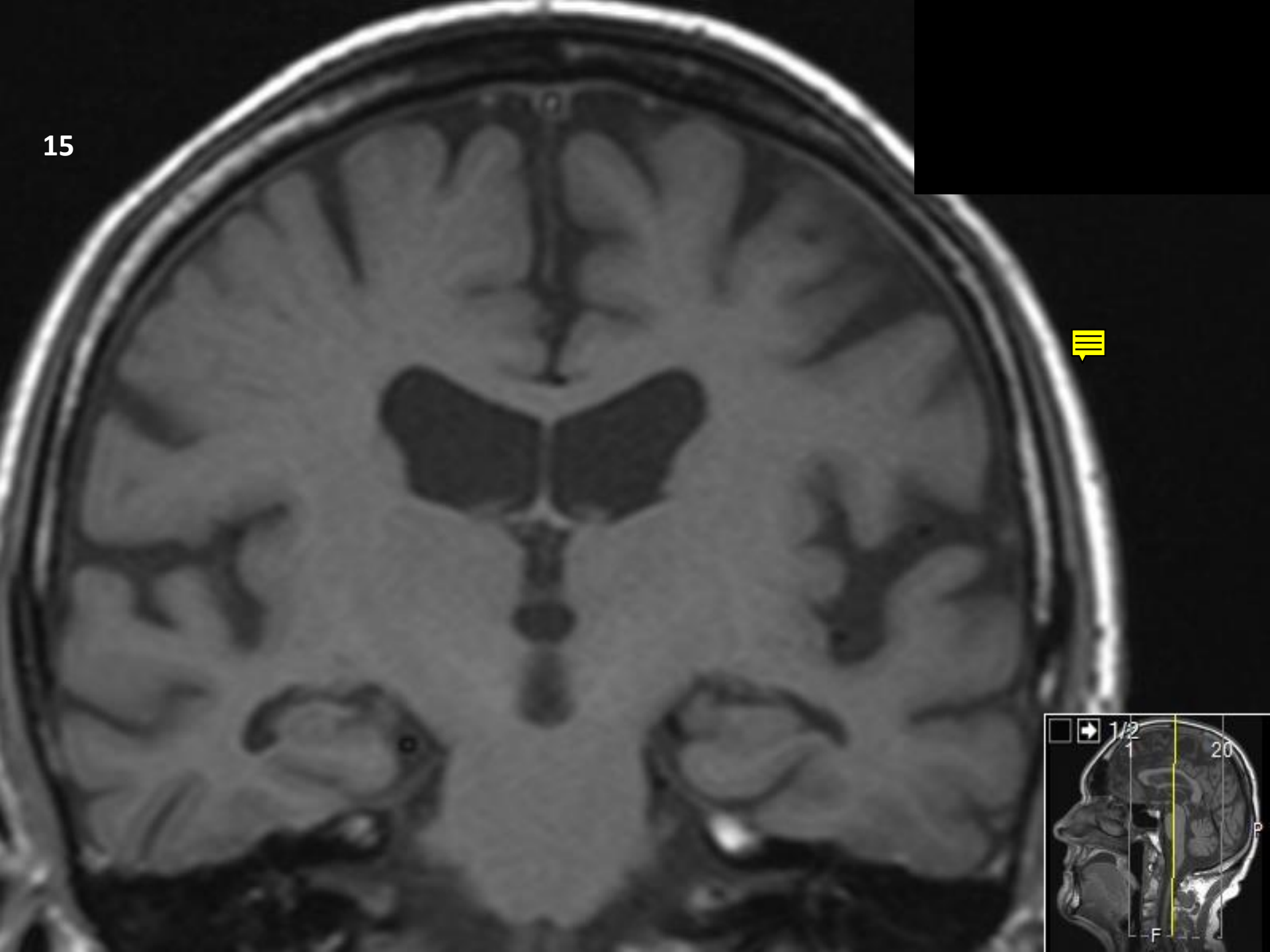
13



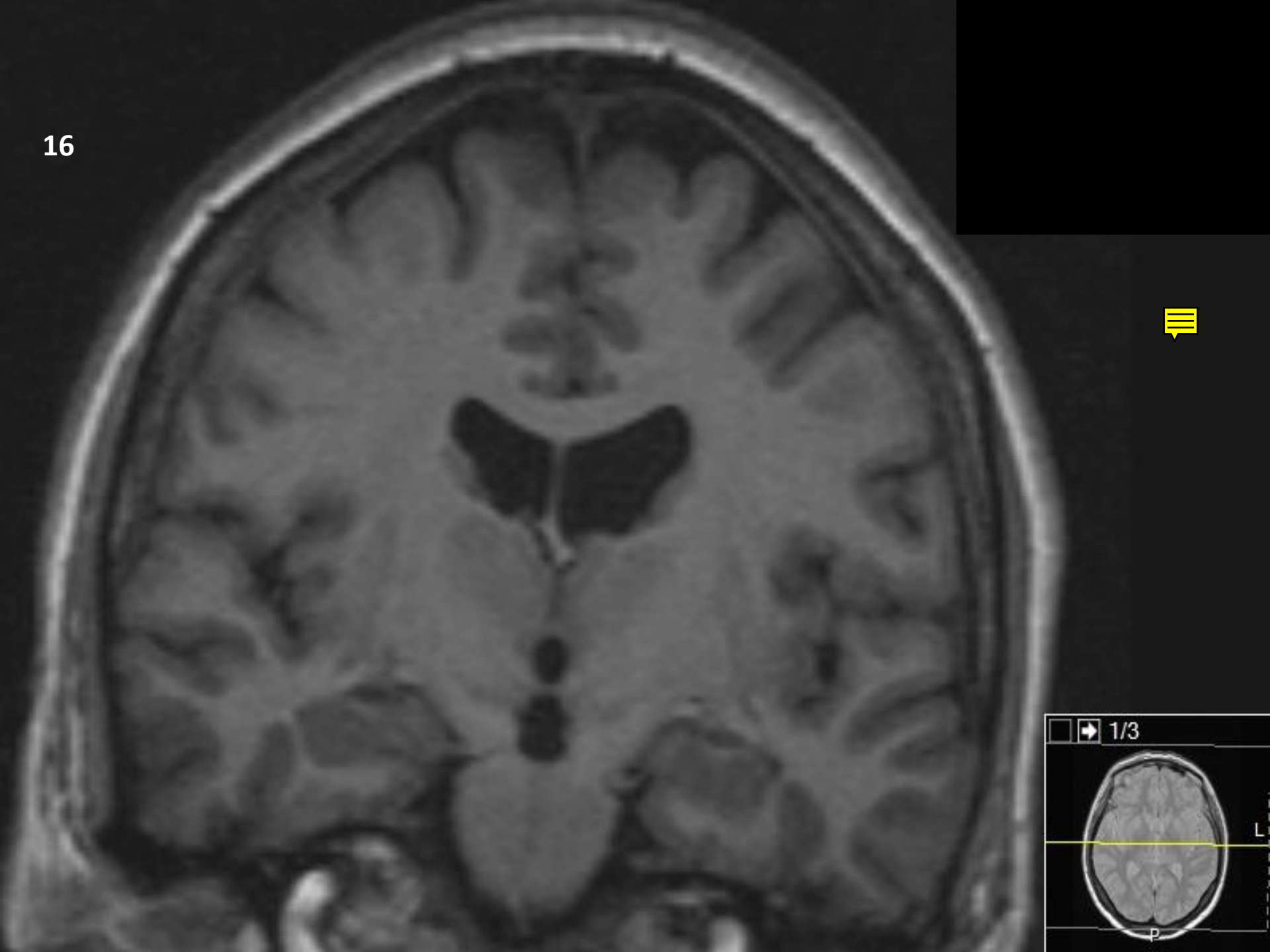
14



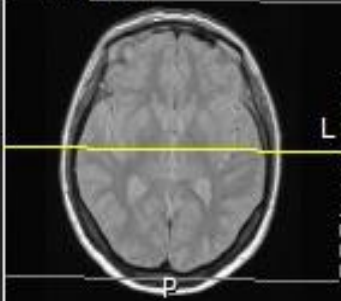
15



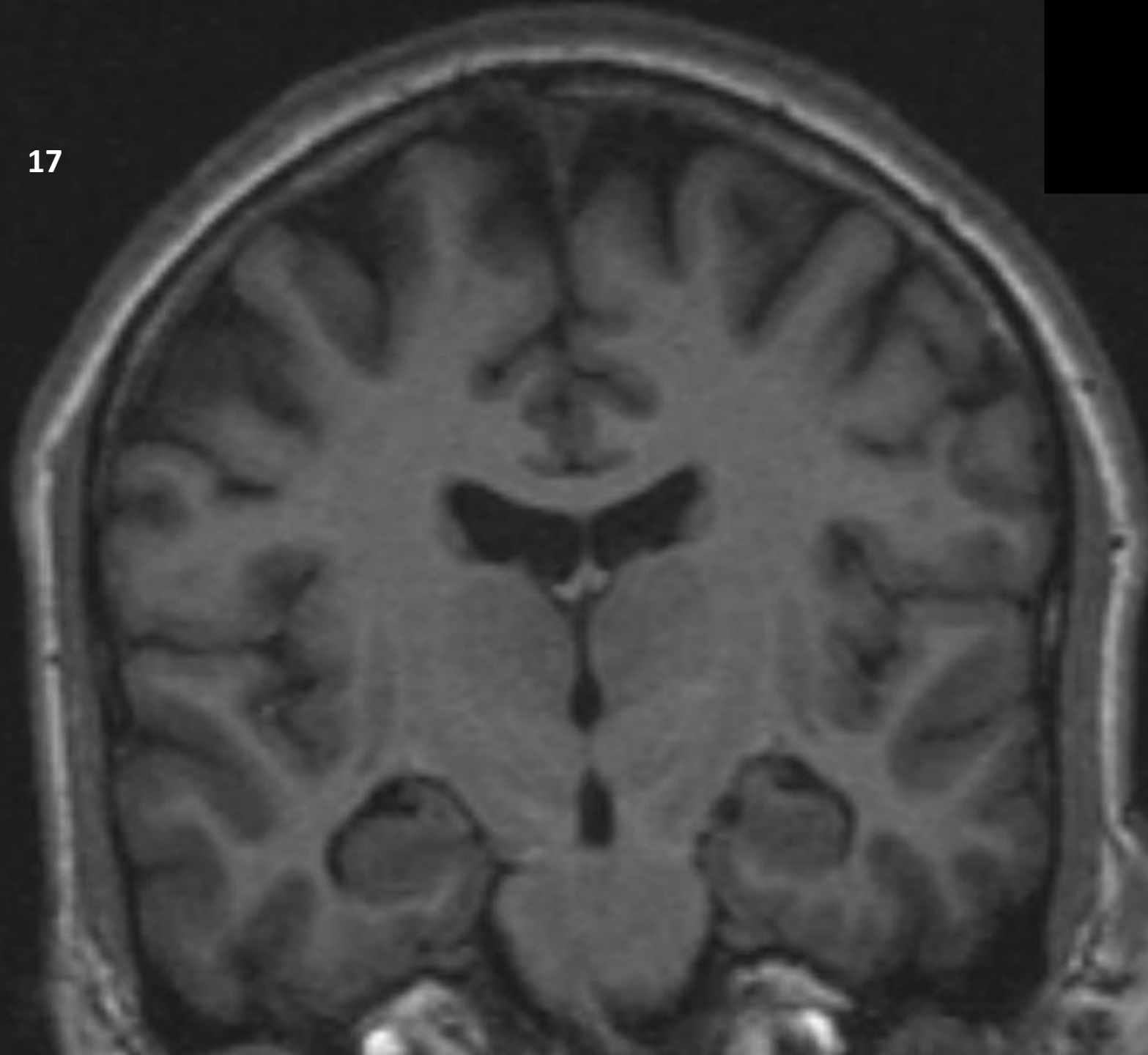
16



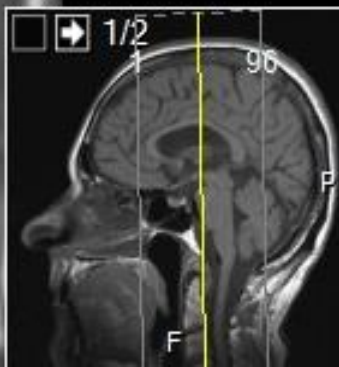
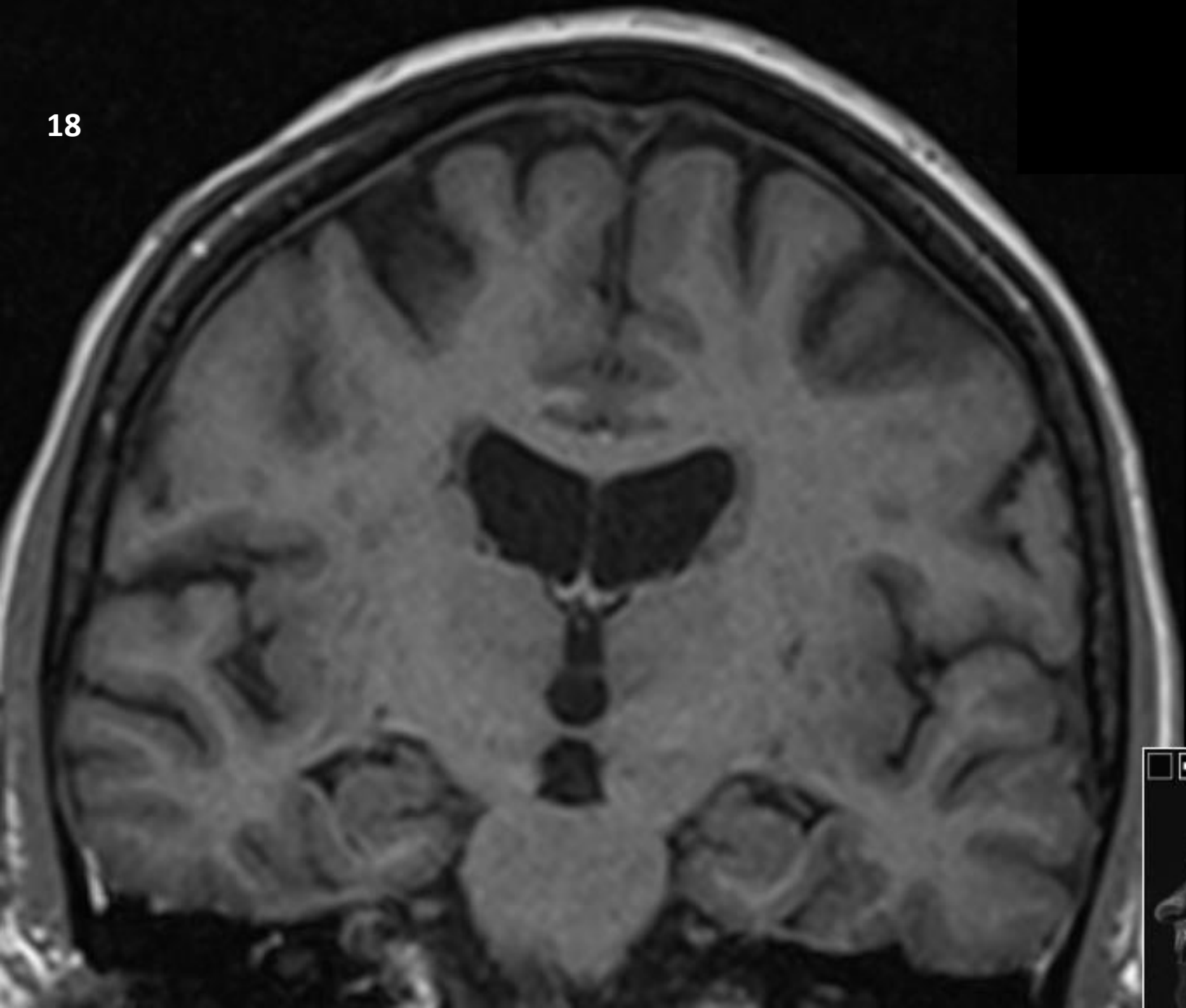
1/3



17

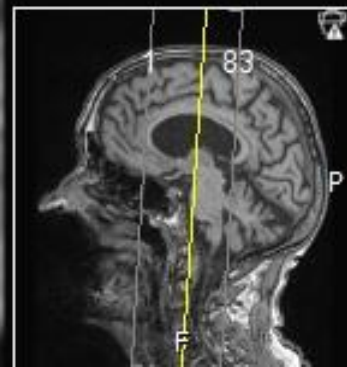


18

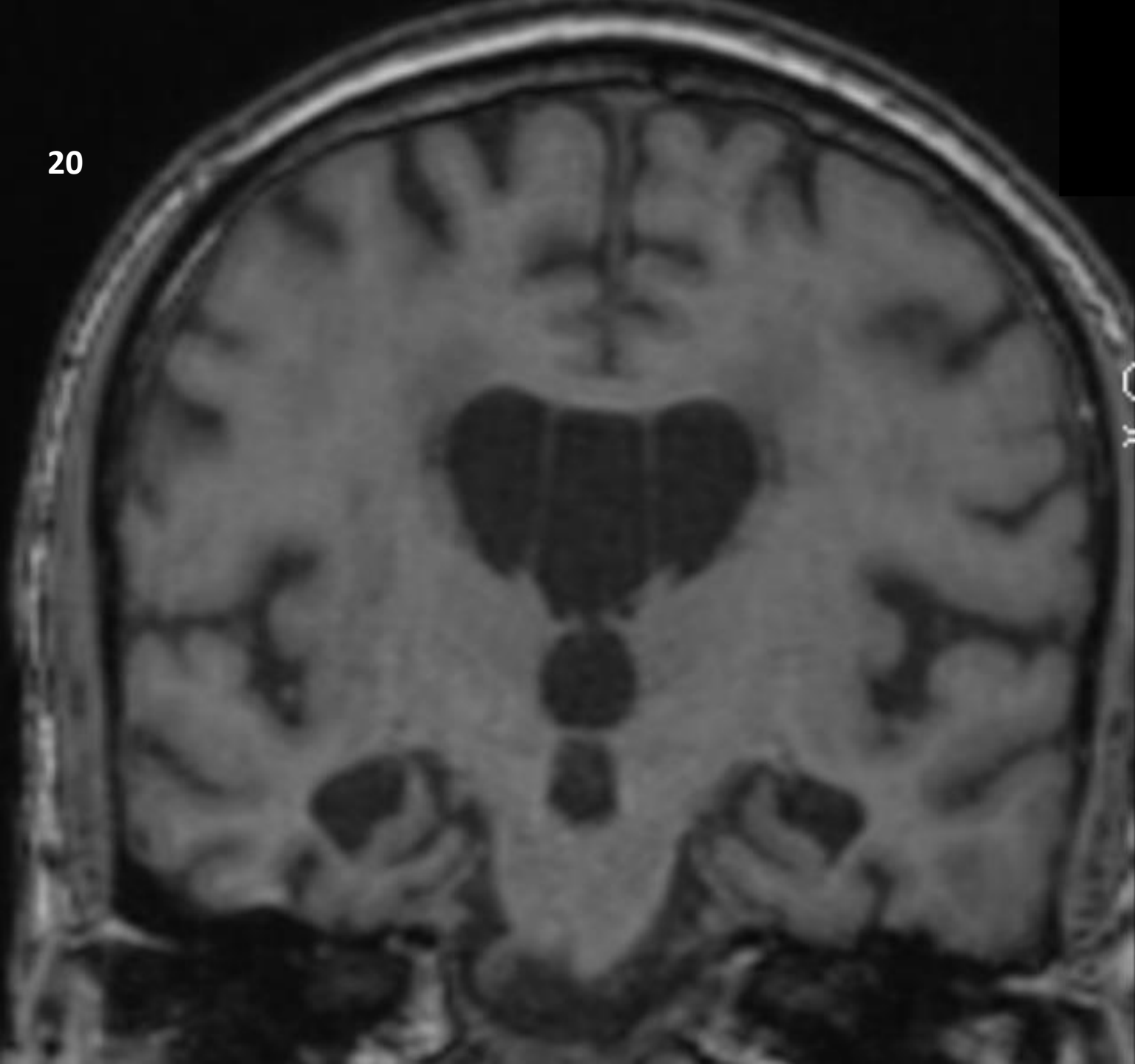


19

Cor>Tra 4
>Sag -1



20



Cor>Sag 1
>Tra 1

