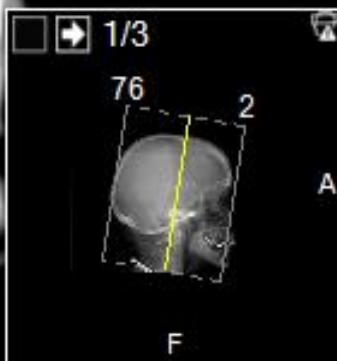
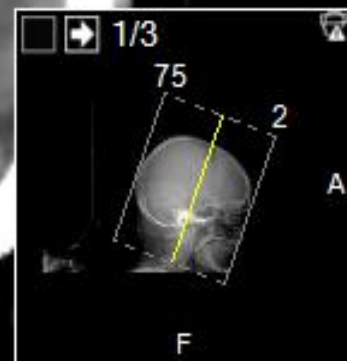
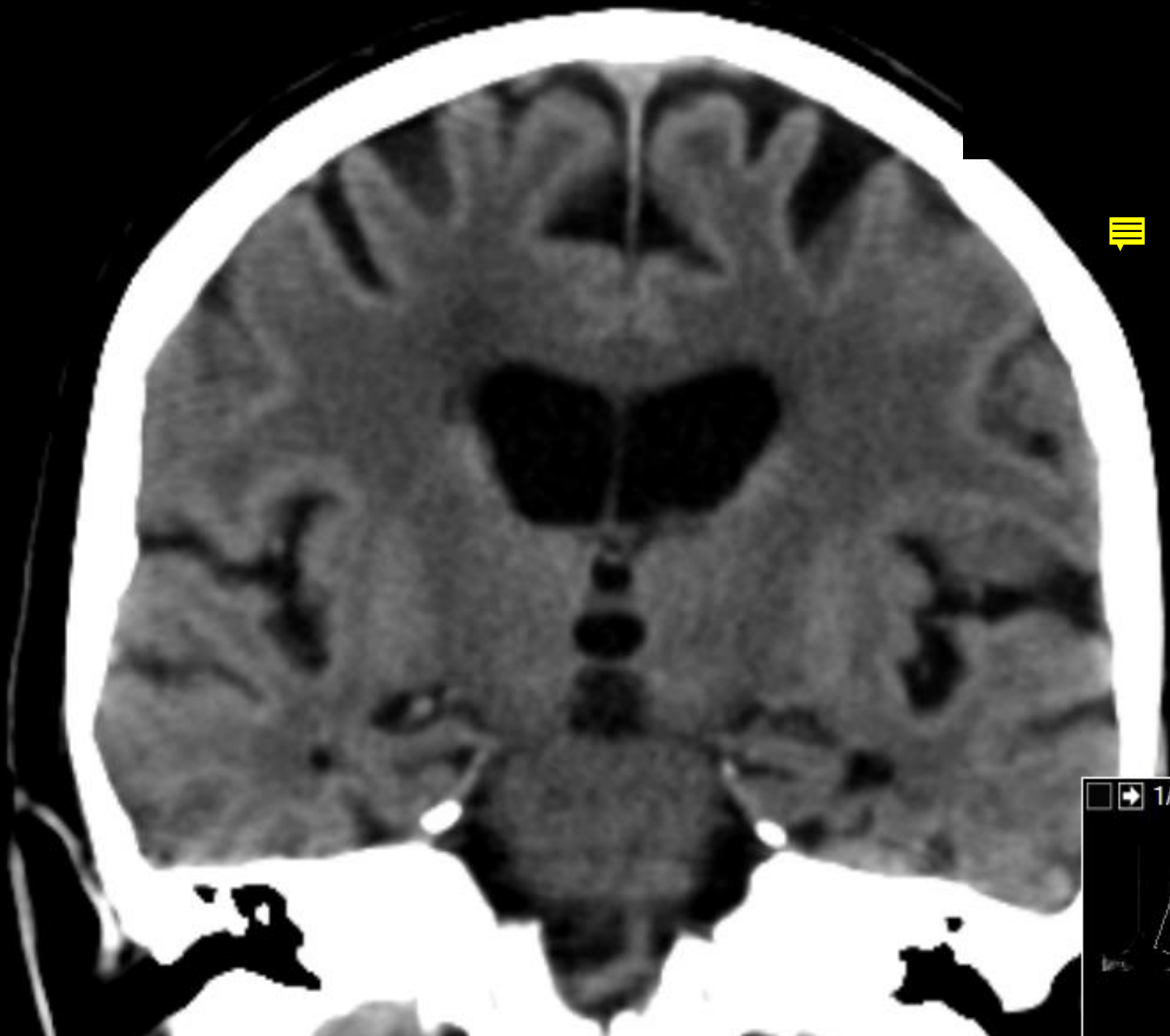


1



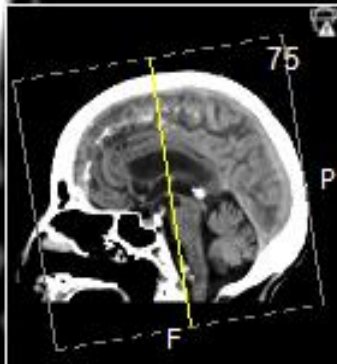
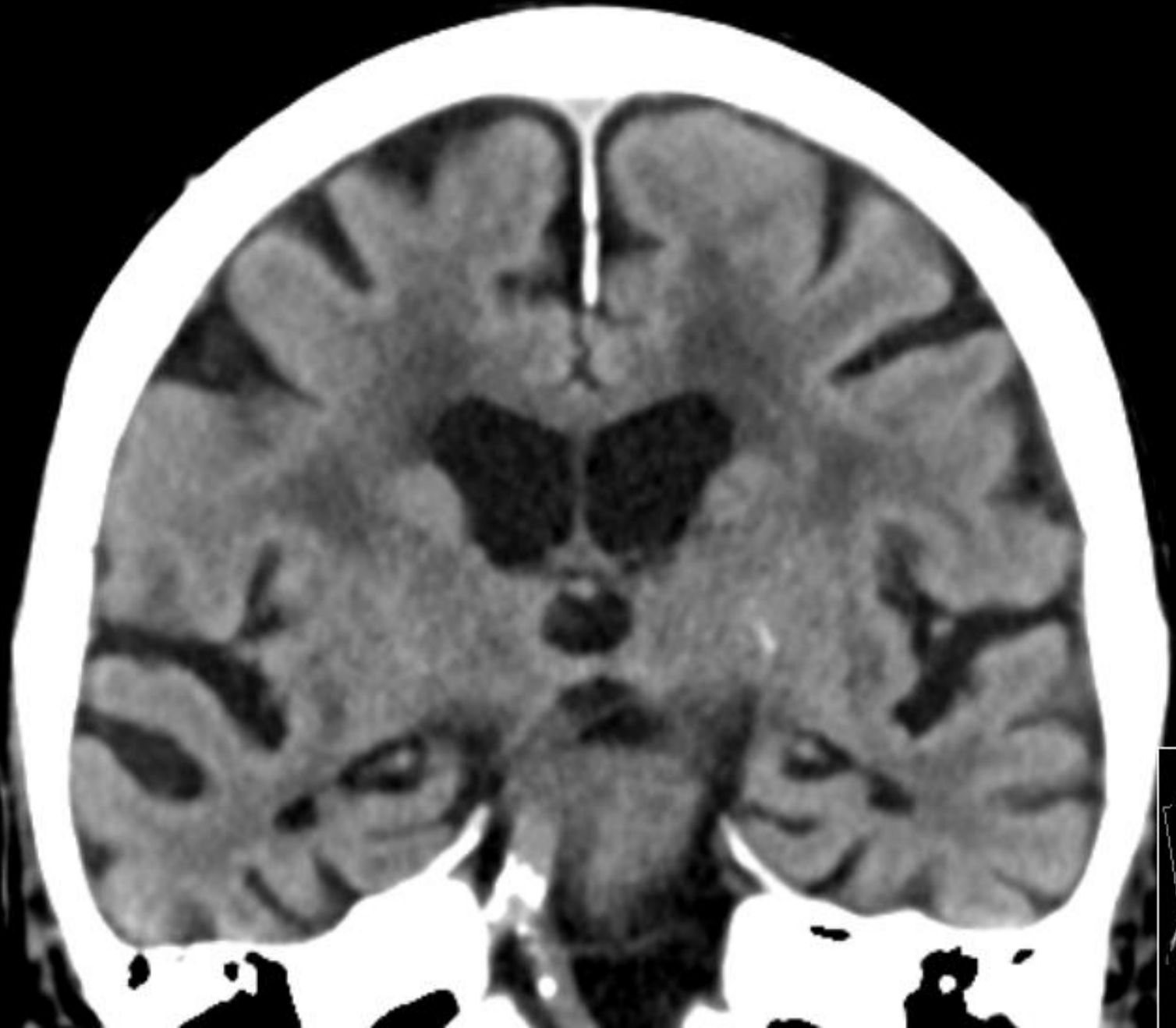
2



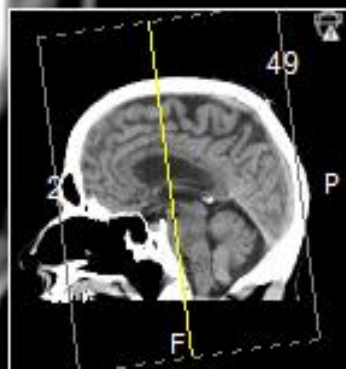
3



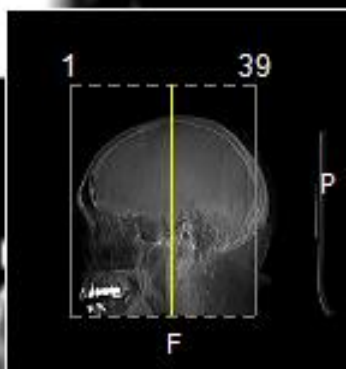
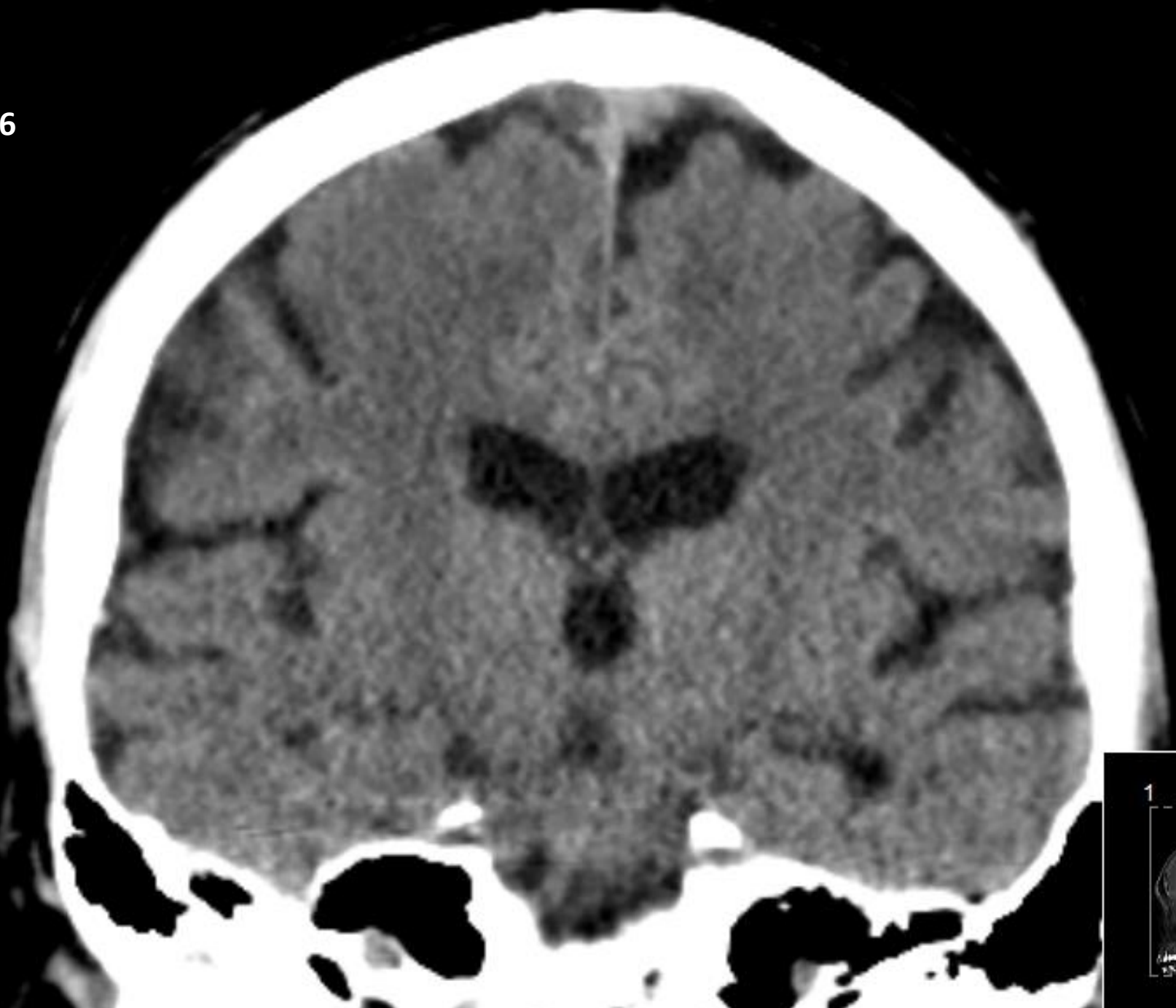
4



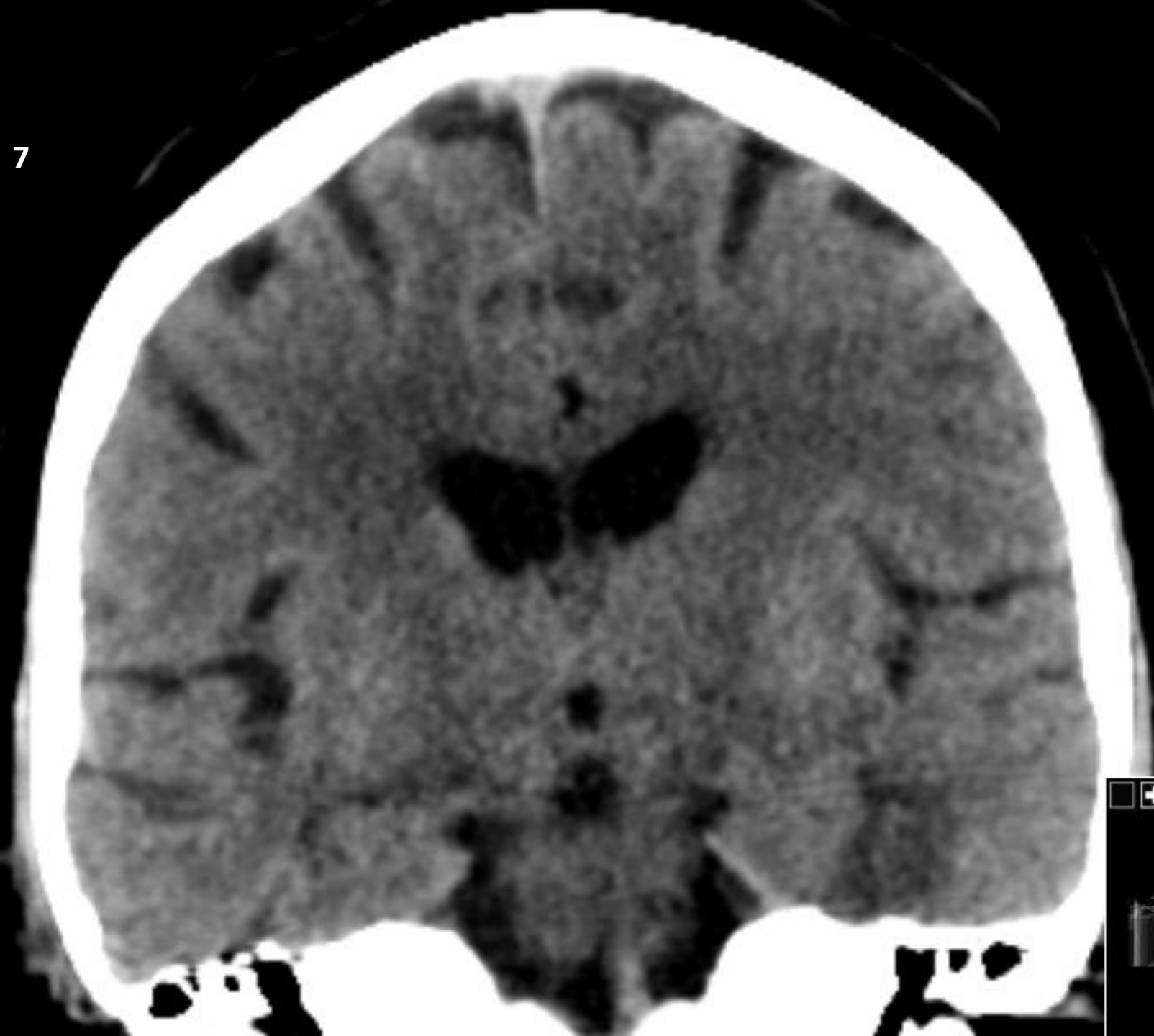
5



6



7



1/3

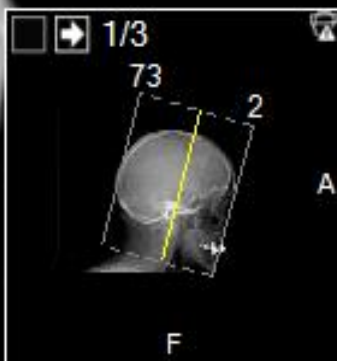
82 2

A

F

A small thumbnail image in the bottom right corner showing a cross-section of a brain. A yellow vertical line is drawn through the center, indicating a measurement or region of interest. The numbers 82 and 2 are visible near the line. The letters A and F are also present.

8

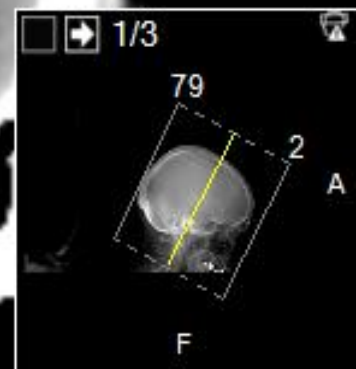




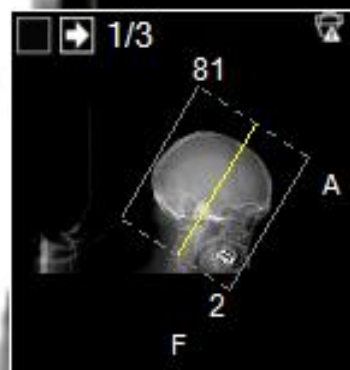
9



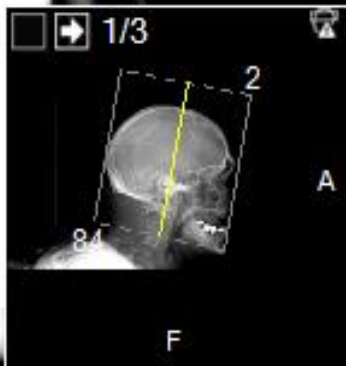
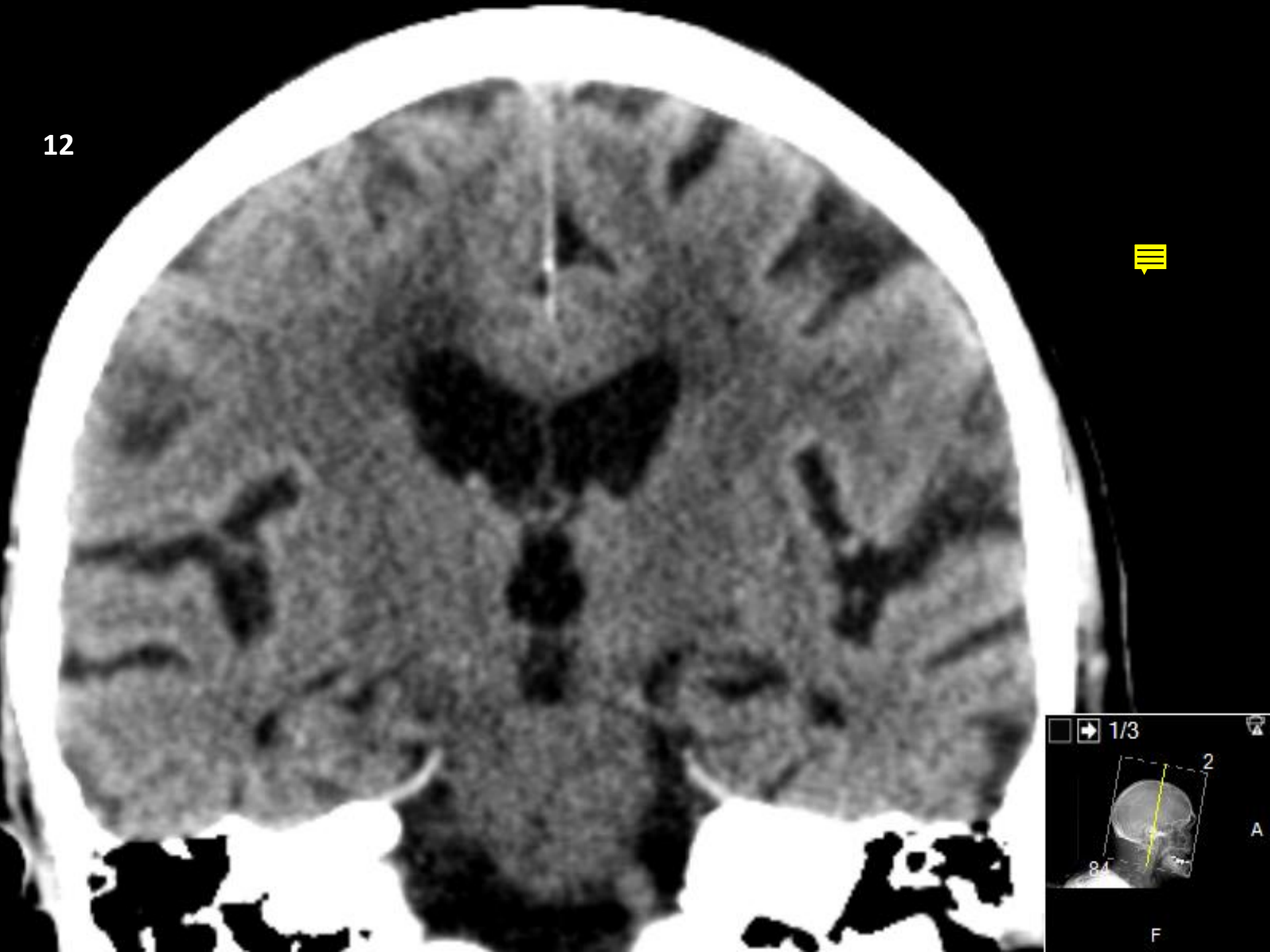
10



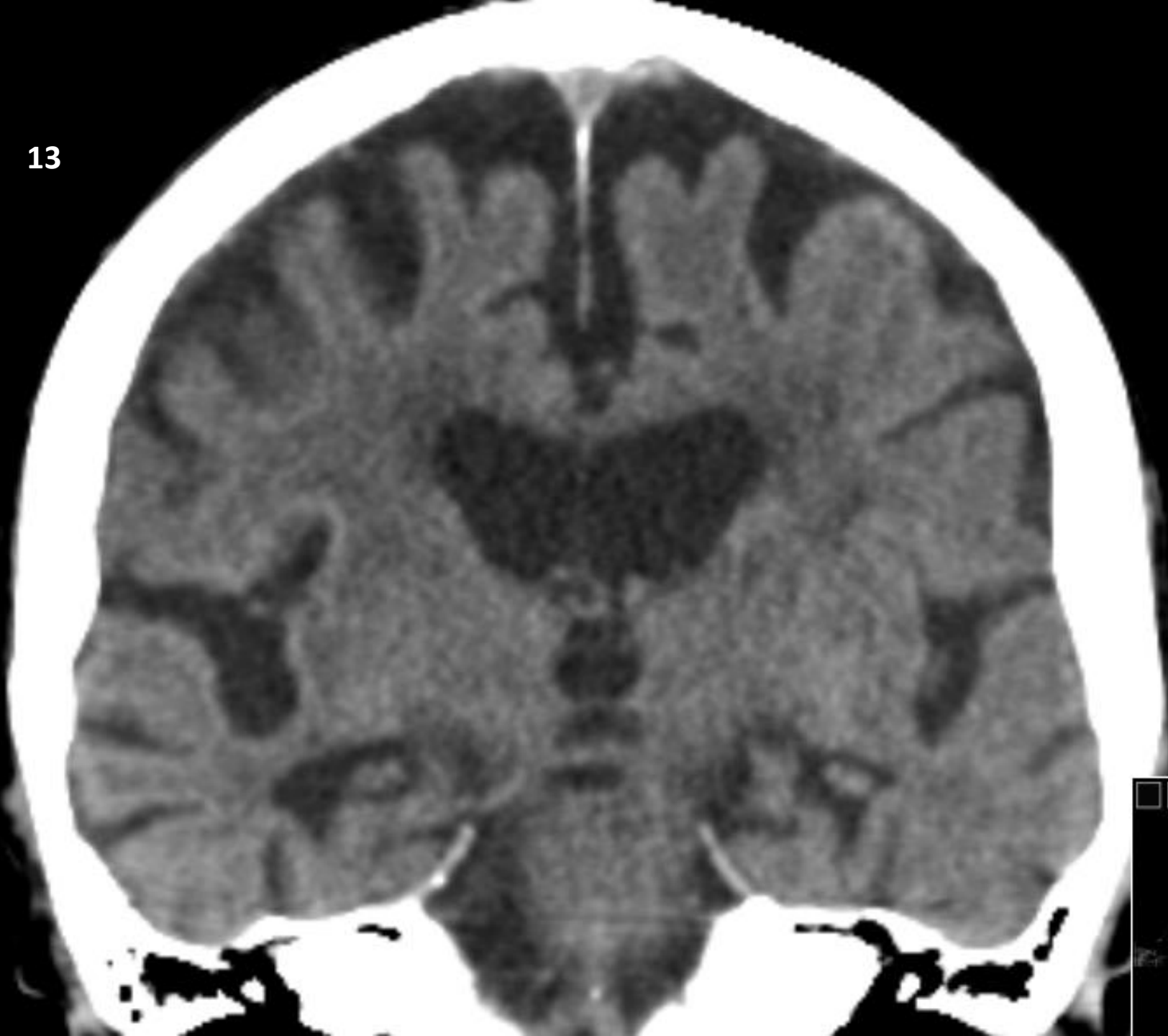
11



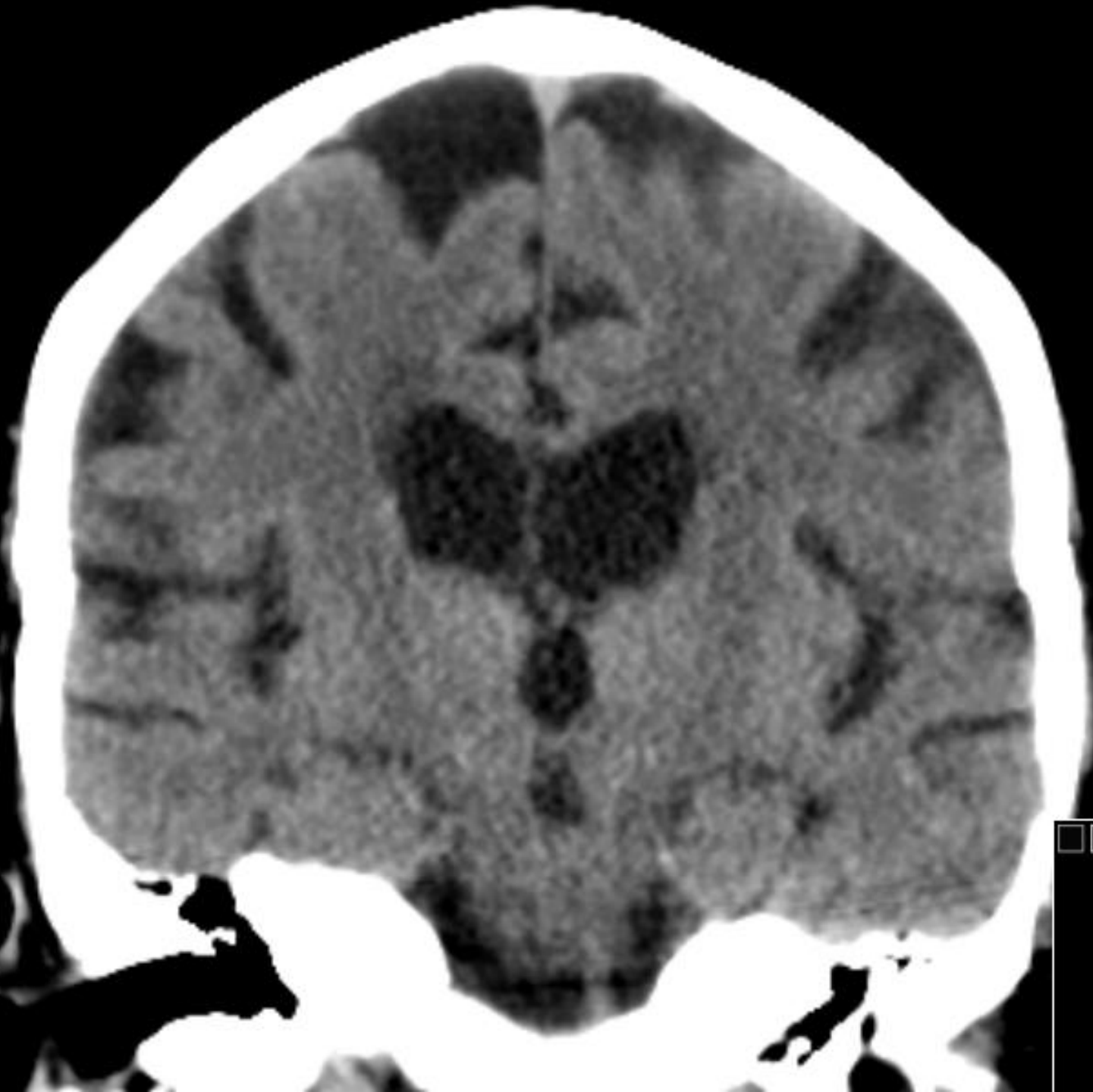
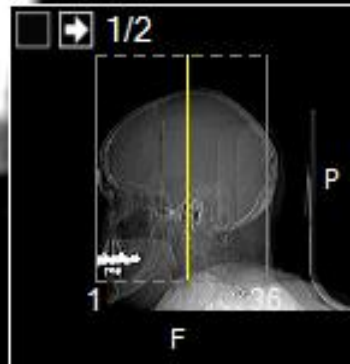
12



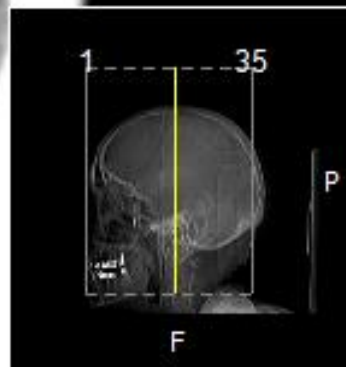
13



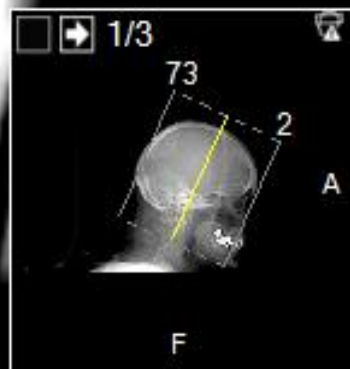
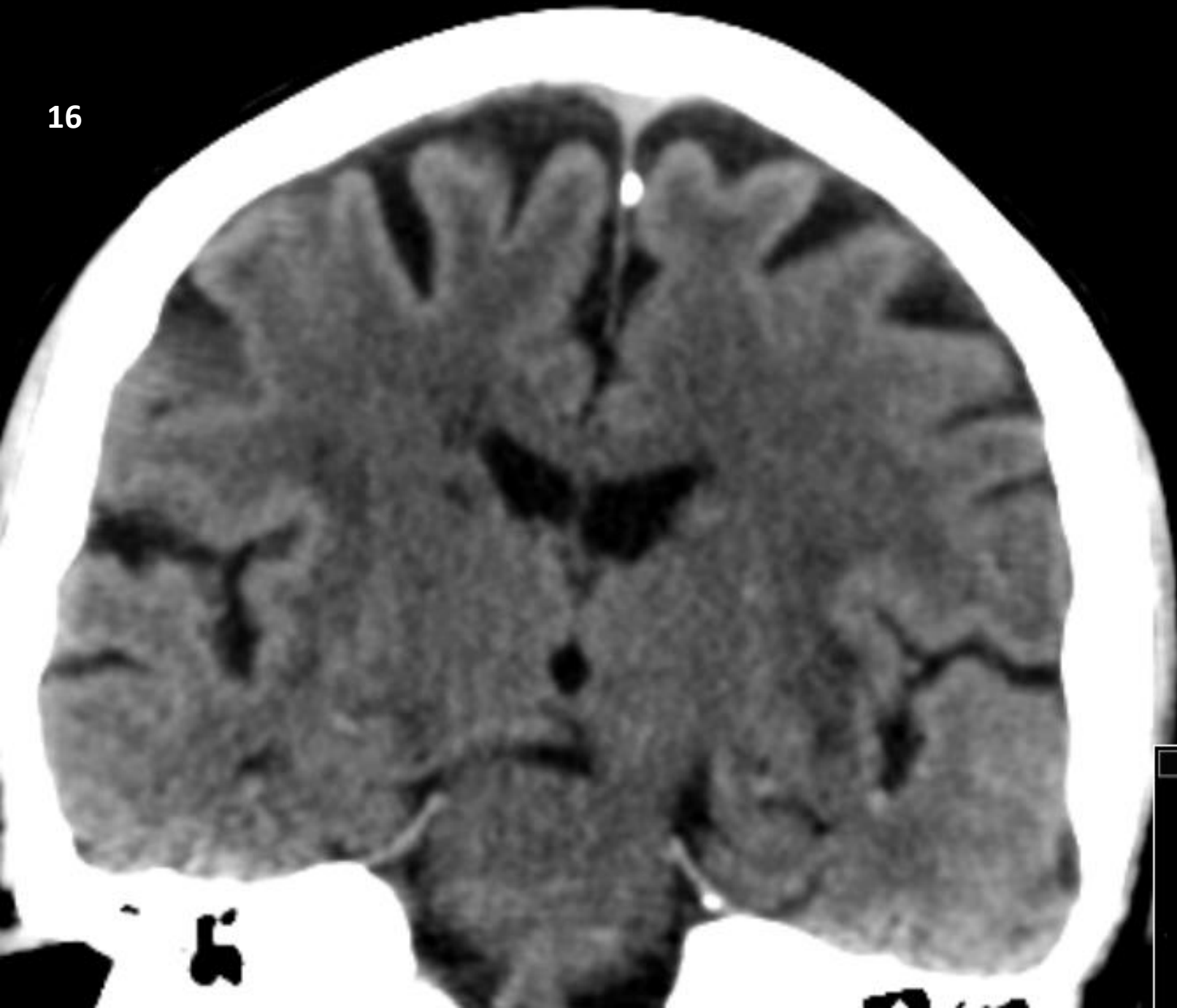
14



15

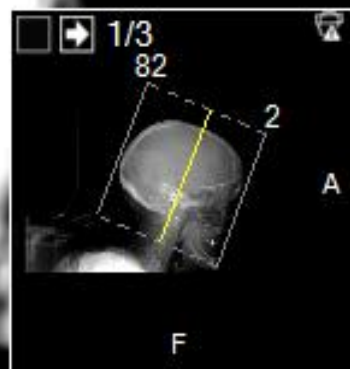
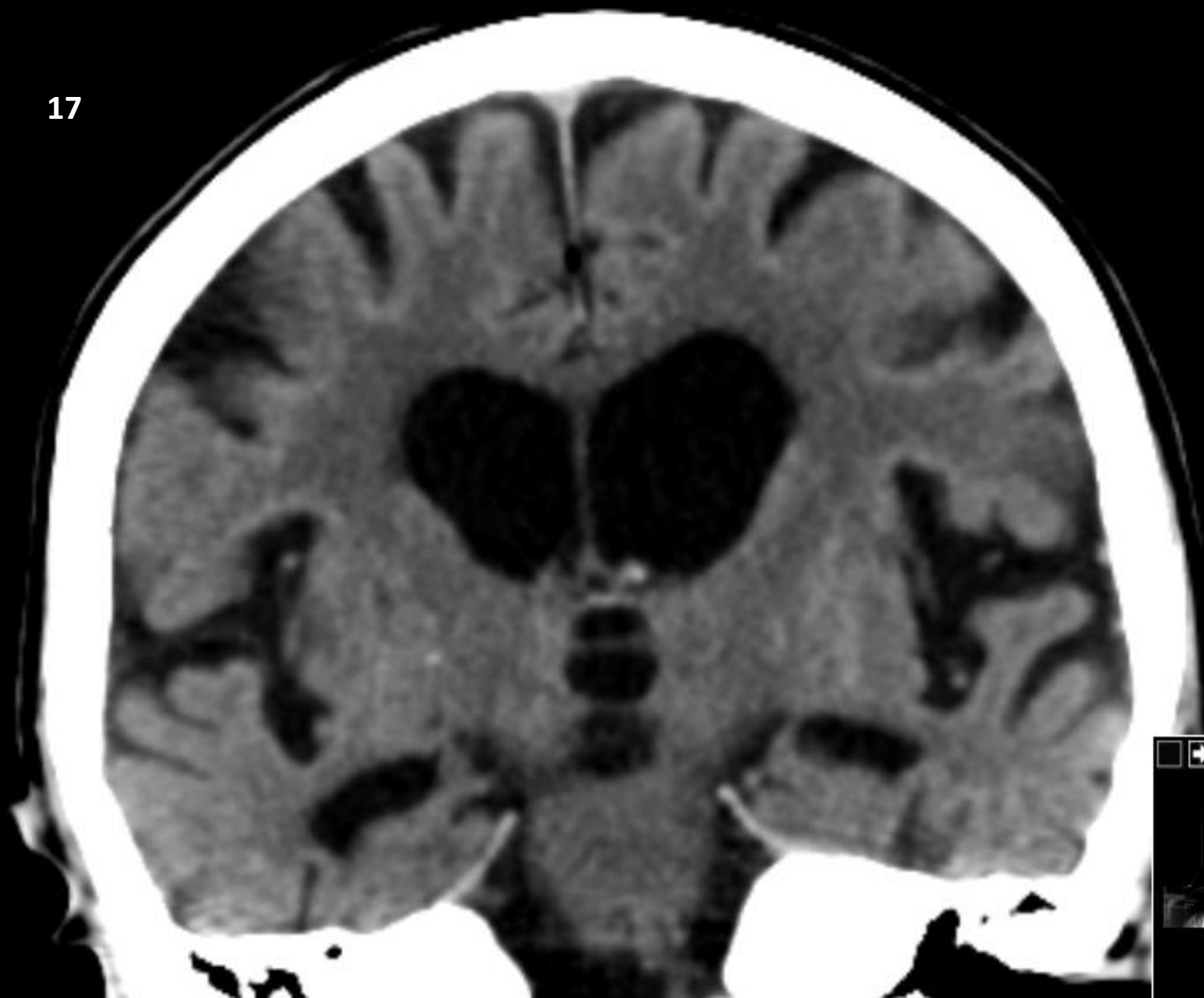


16

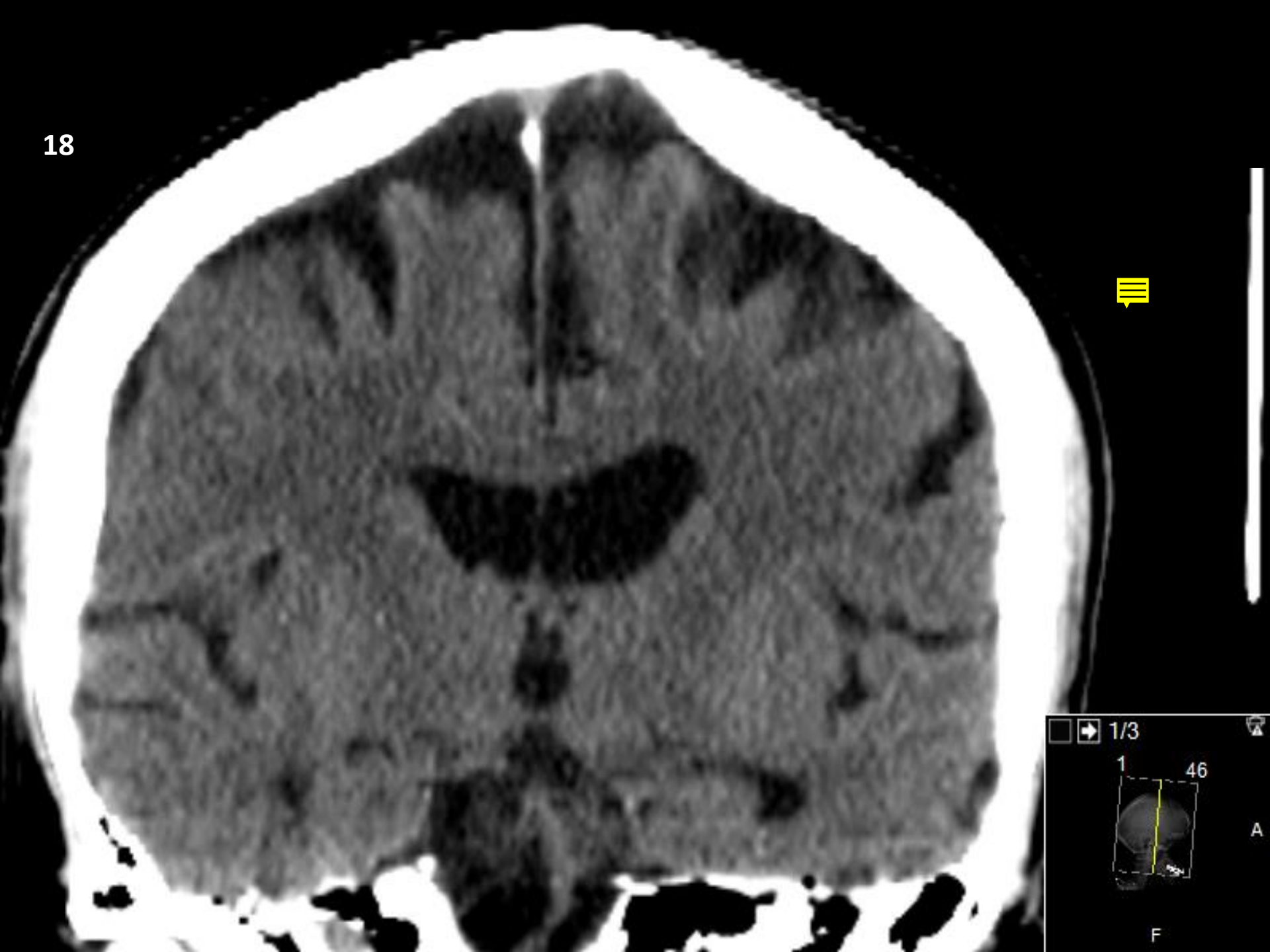




17



18



1/3

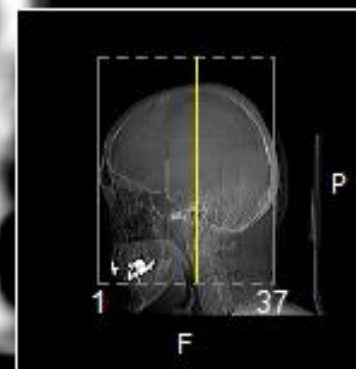
1 46

A

F

A small thumbnail image in the bottom right corner shows a cross-section of a brain with a yellow line indicating the slice location. The numbers 1 and 46 are visible, likely representing slice numbers. The letters A and F are also present, possibly indicating anatomical planes or directions.

19



20

