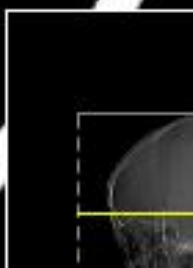
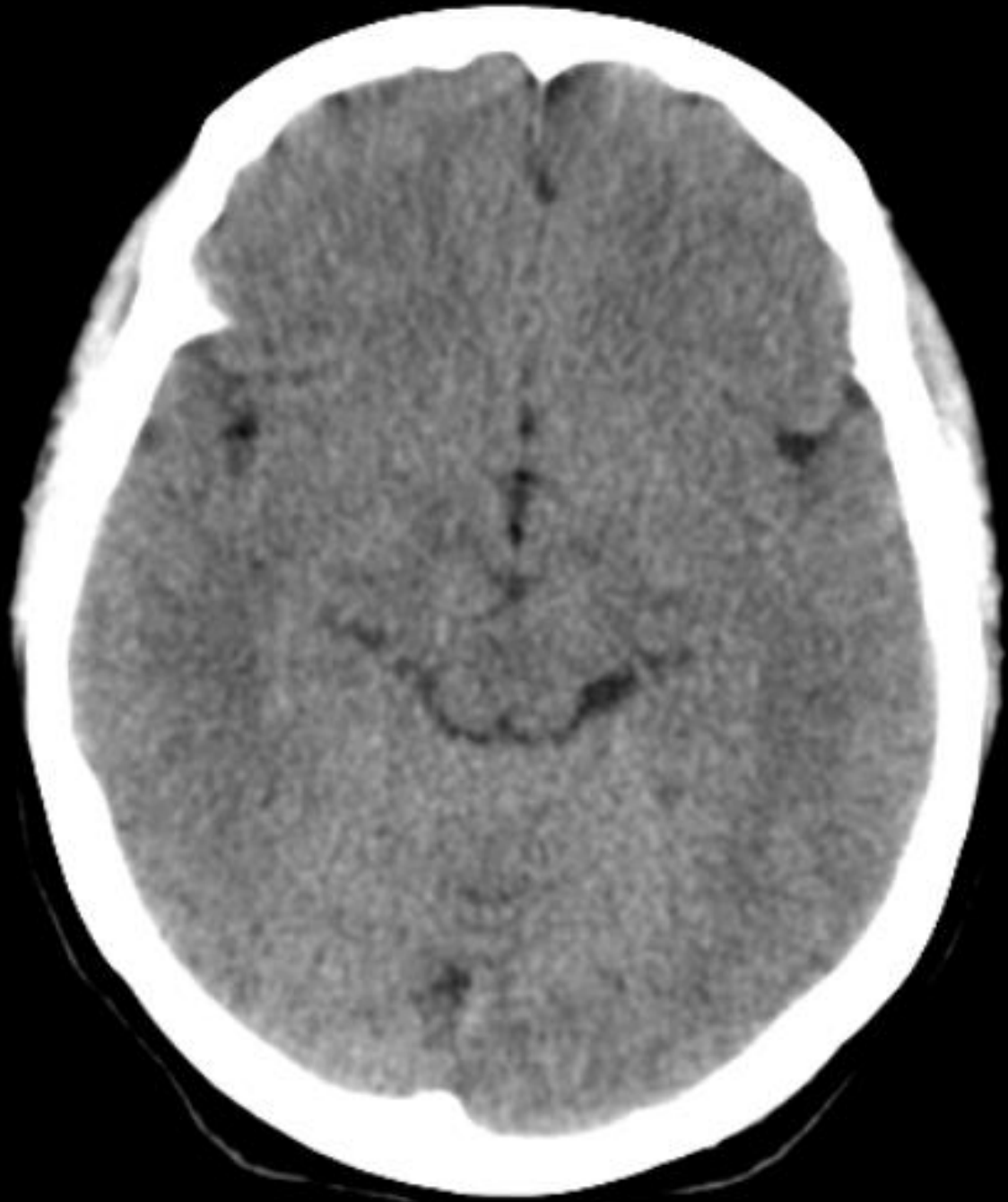


1



2

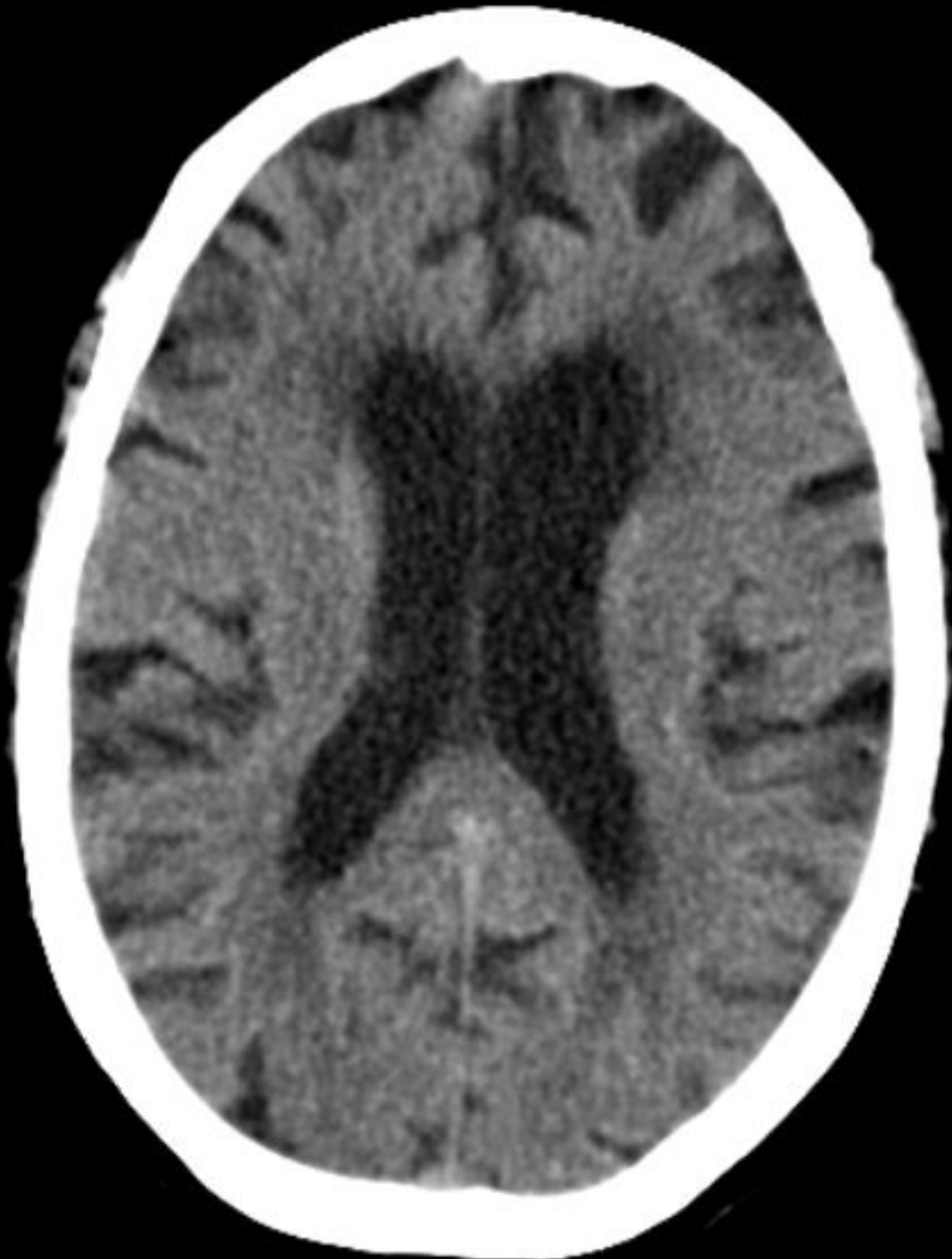


1/10

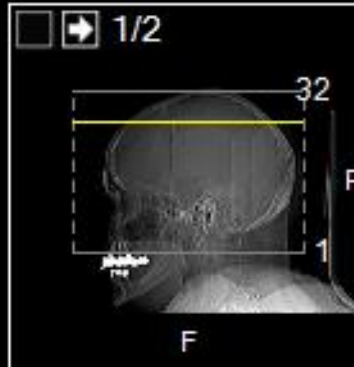


F

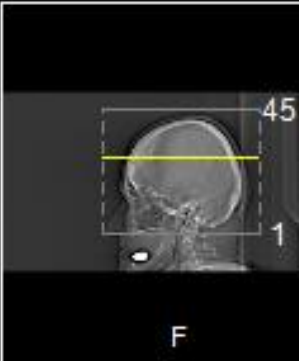
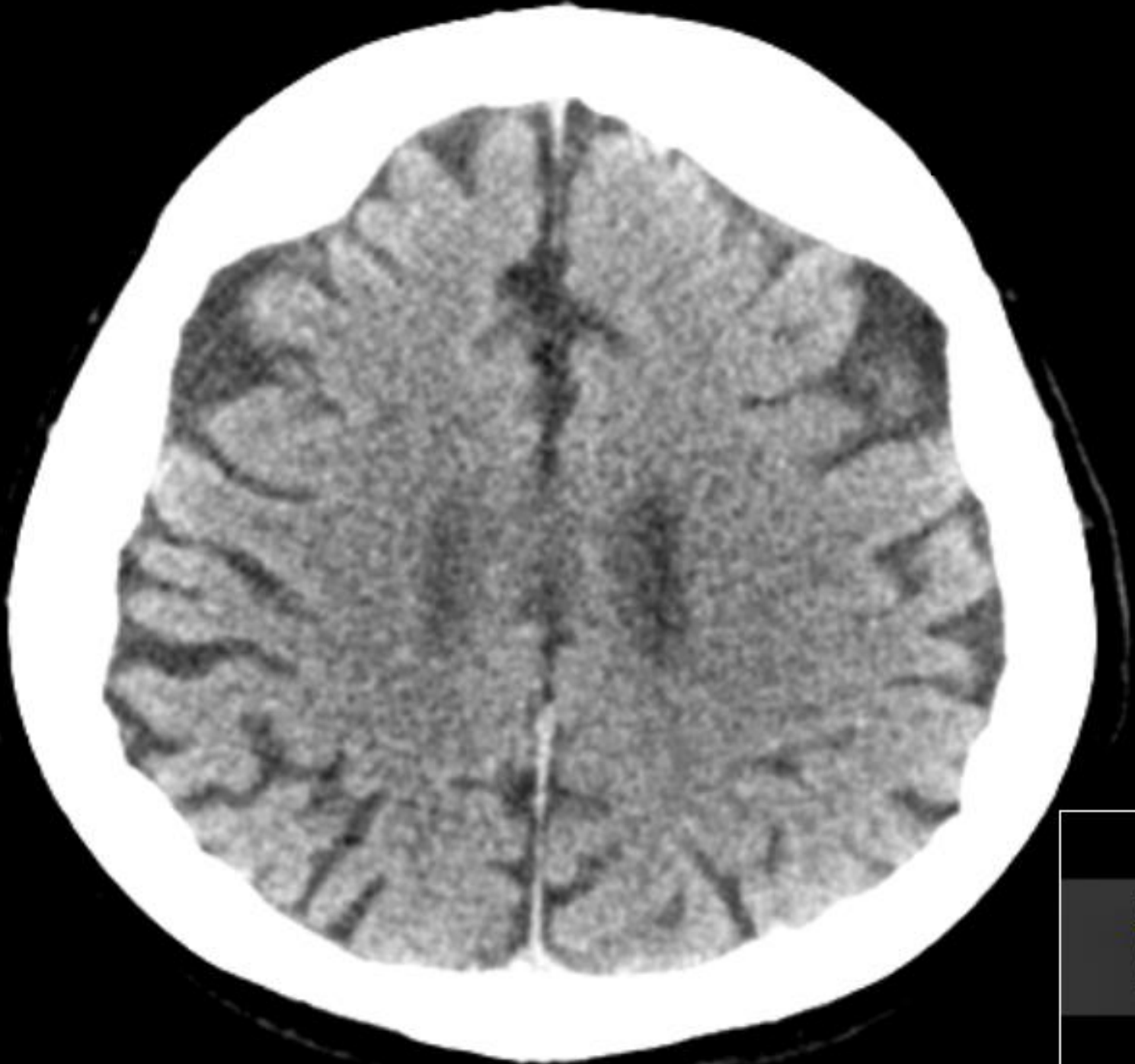
3



4

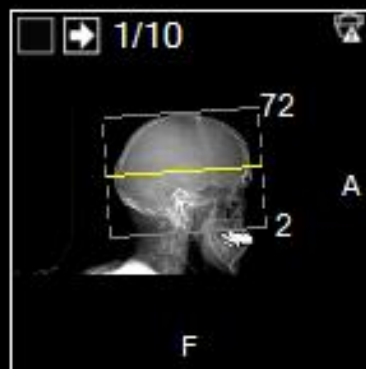
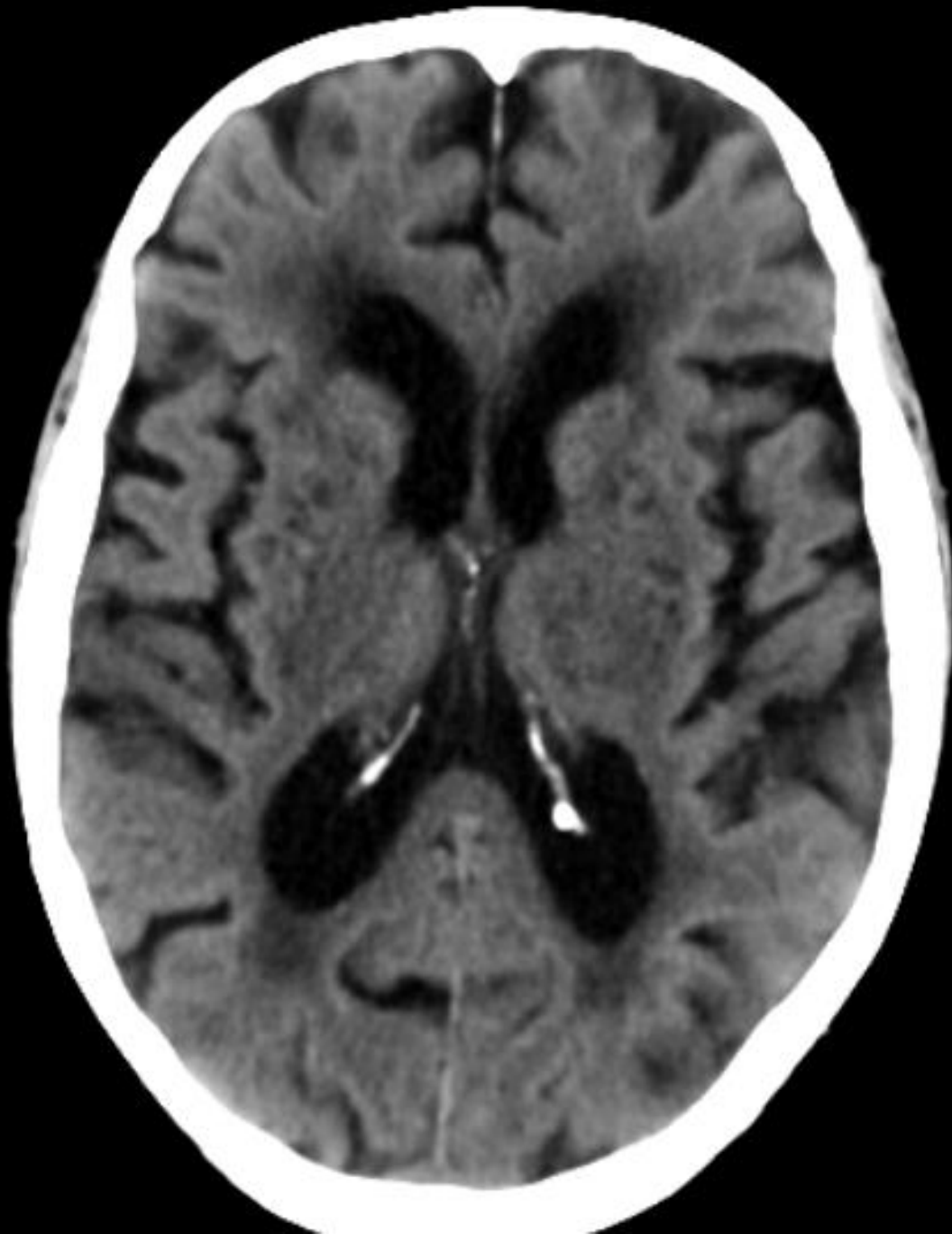


5

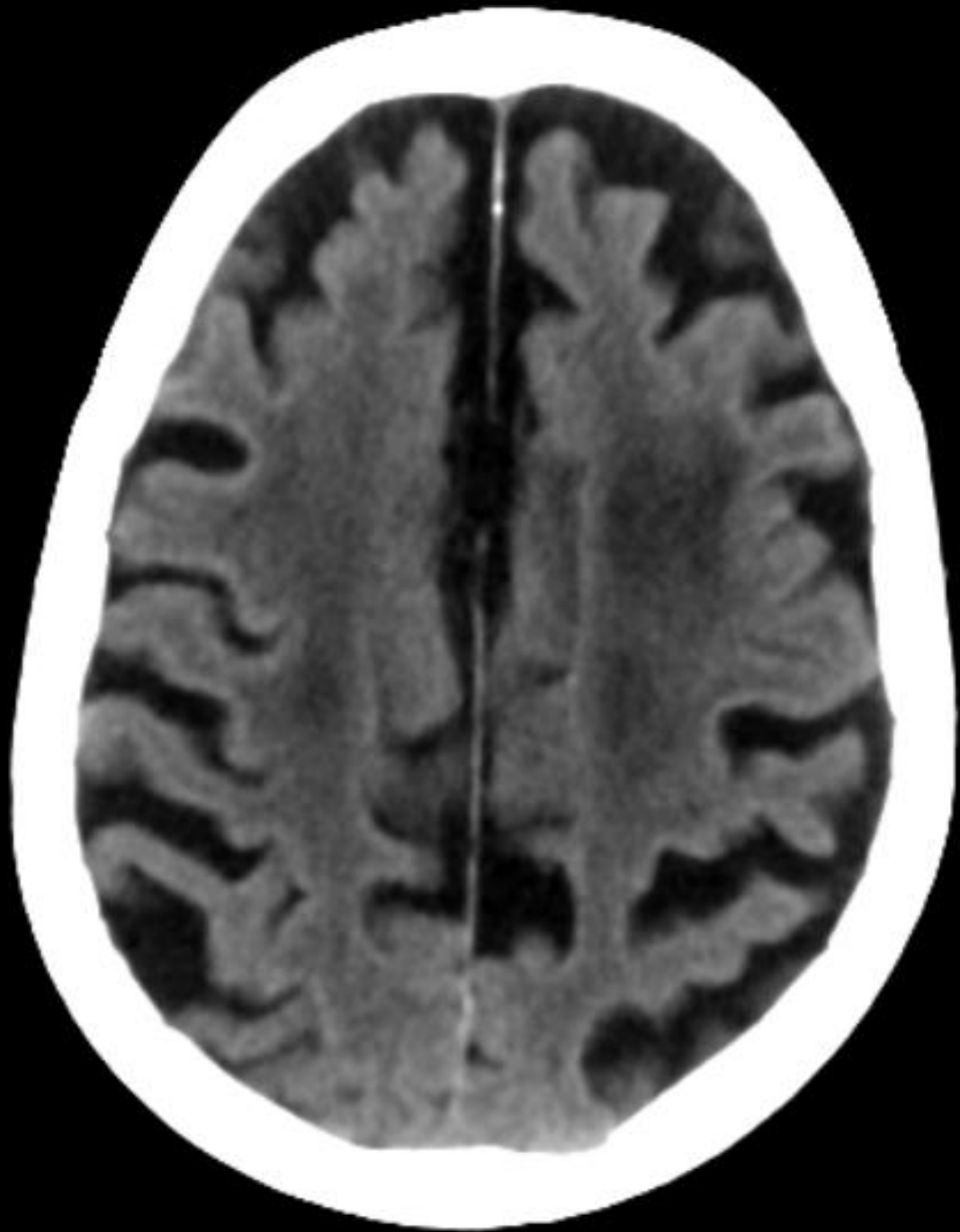


F

6



7

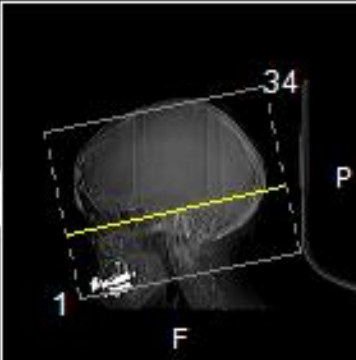


1/10

A small thumbnail image showing a sagittal view of a brain scan. A yellow horizontal line is drawn across the brain, with the number '72' at its right end and the number '2' at its left end. The thumbnail is enclosed in a dashed box.

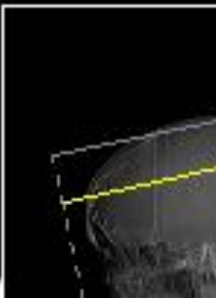
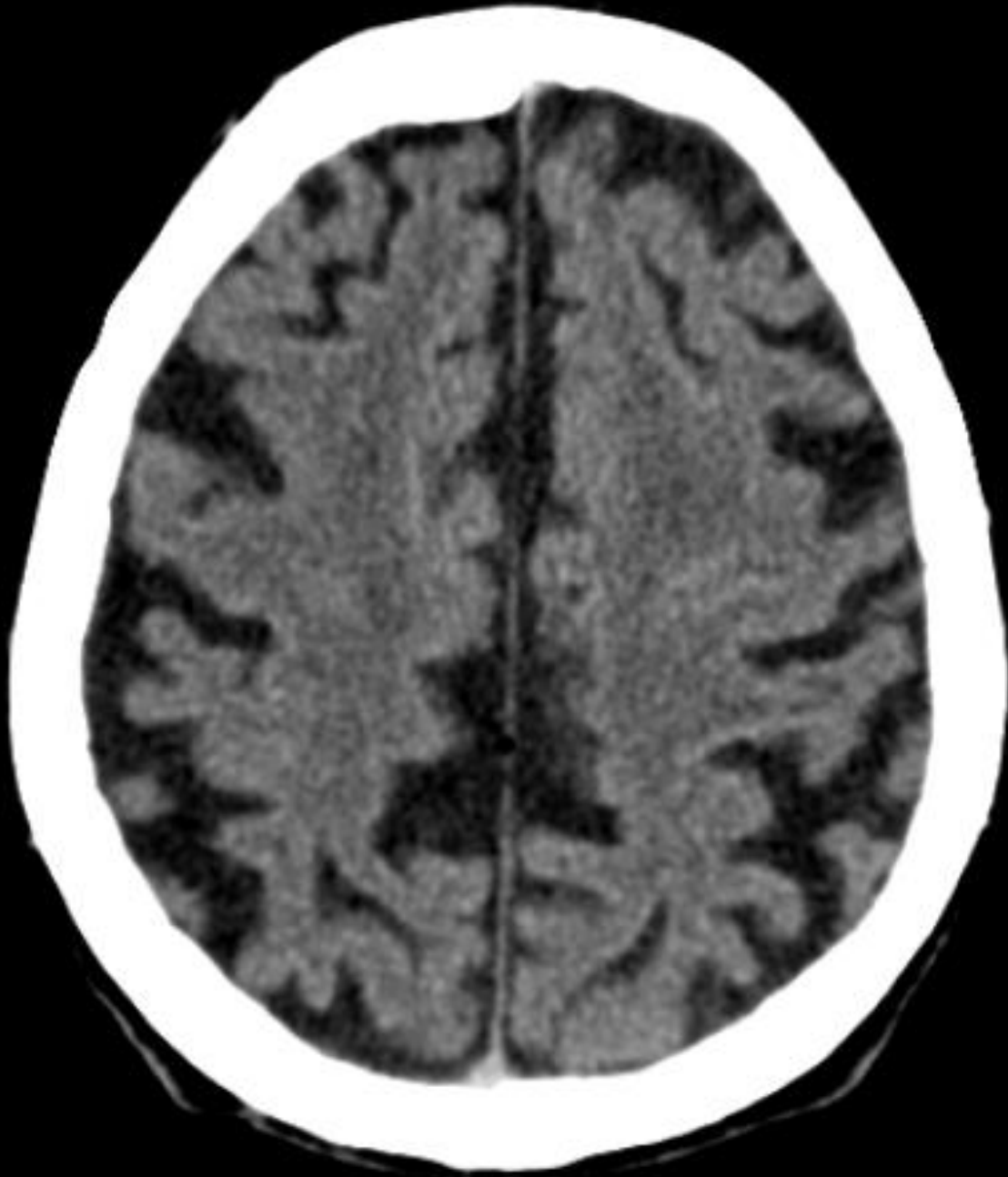
F

8

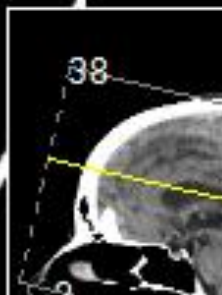




9



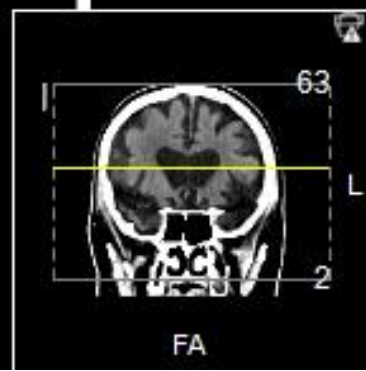
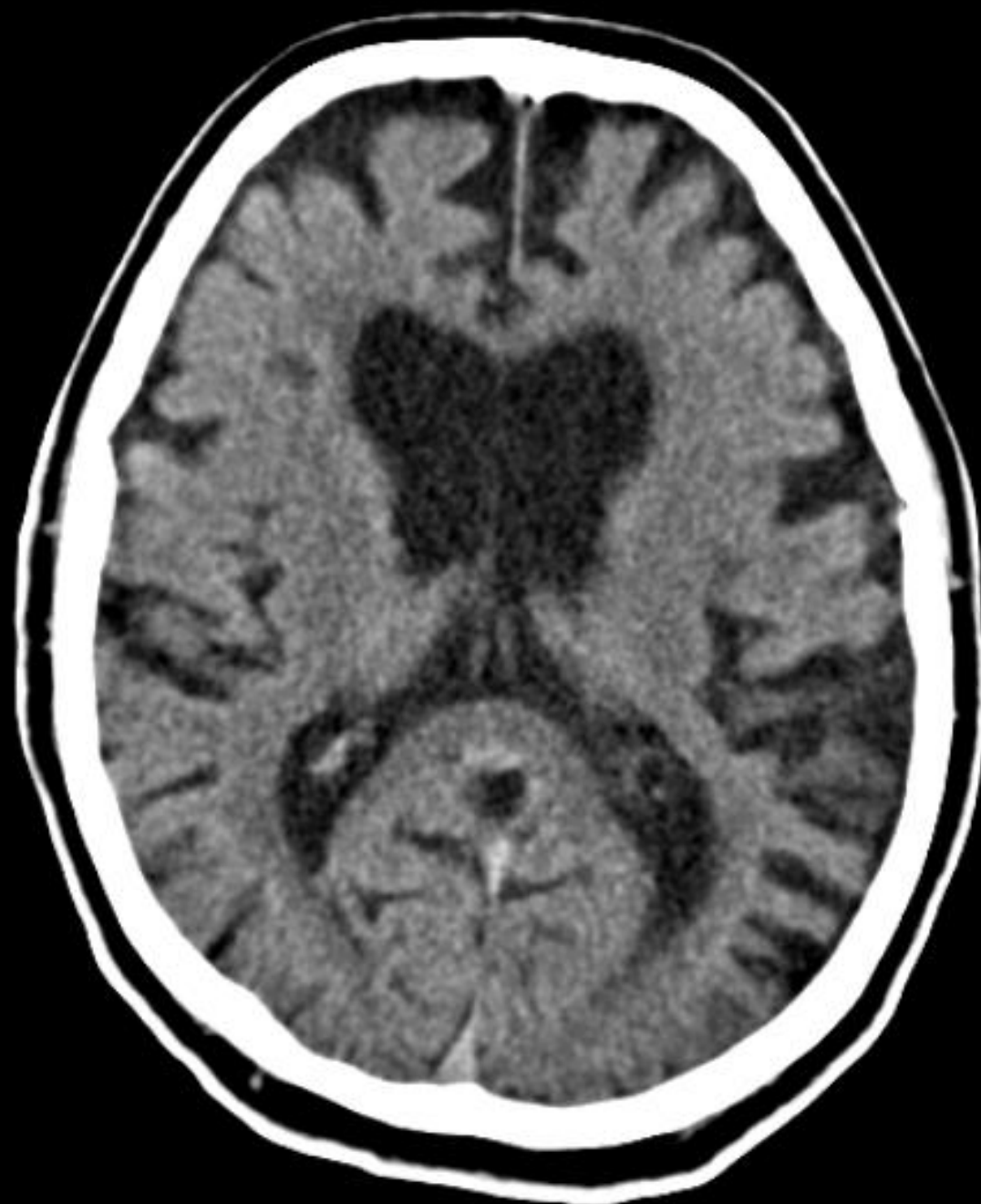
10



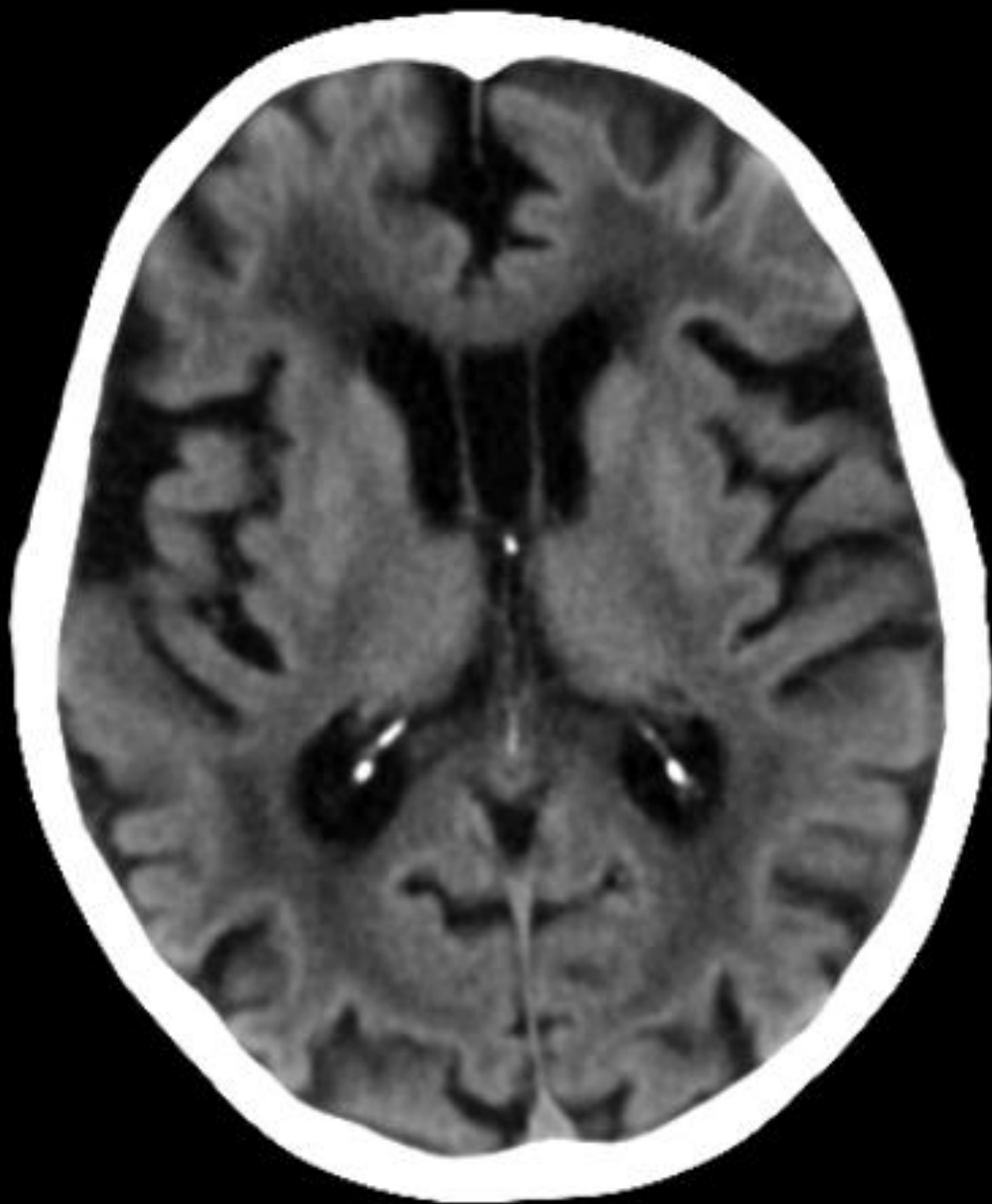
11



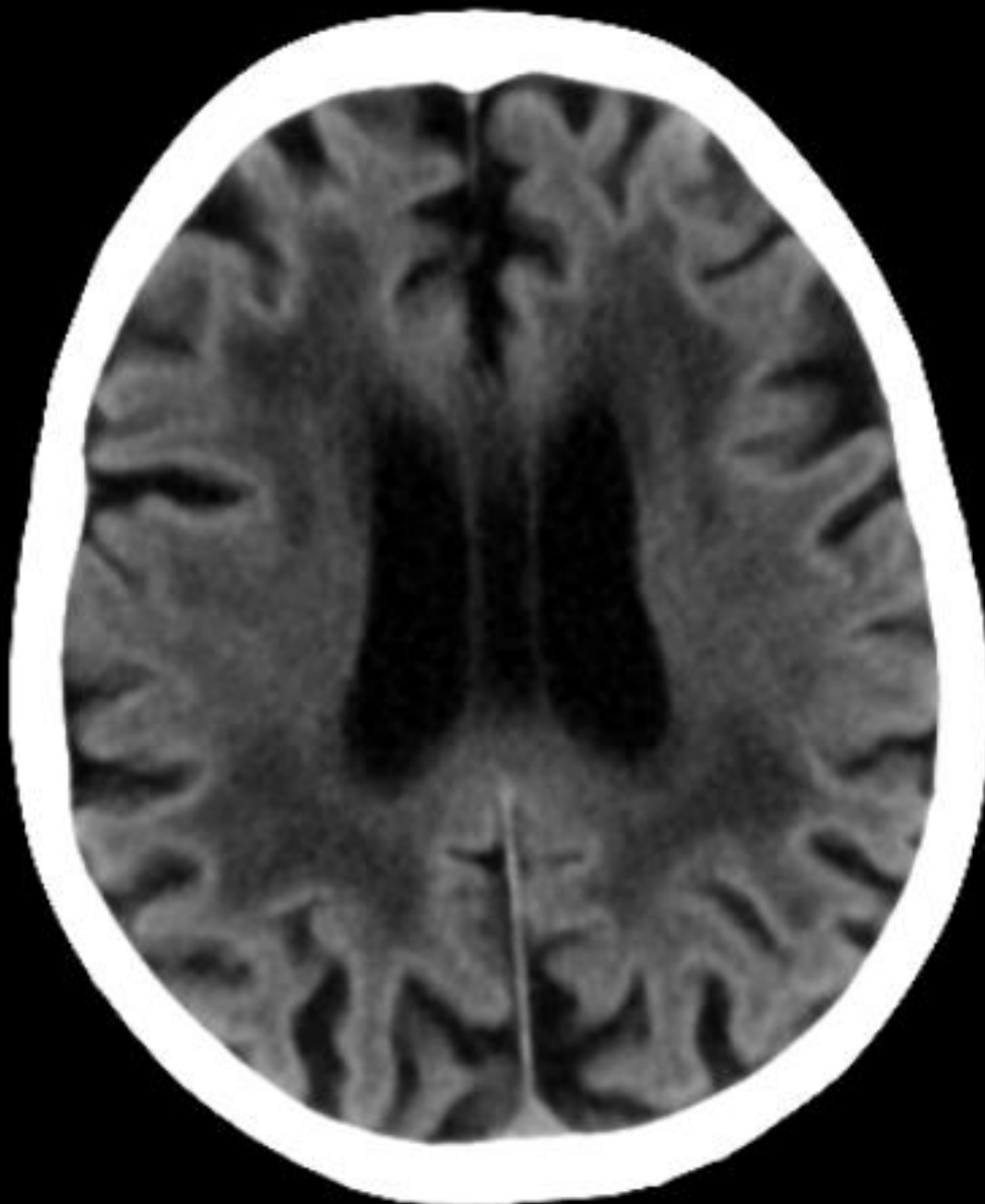
12



13



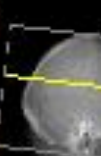
14



1/8

1

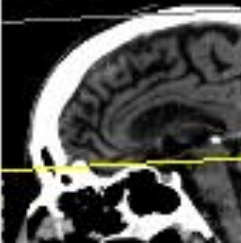
62



15



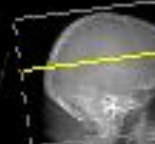
1/8



16

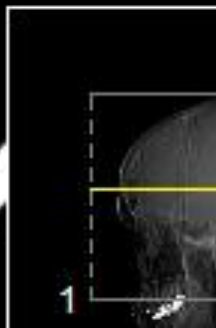


1/6

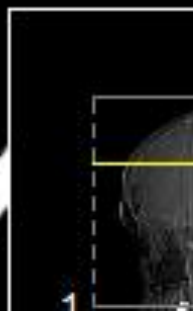
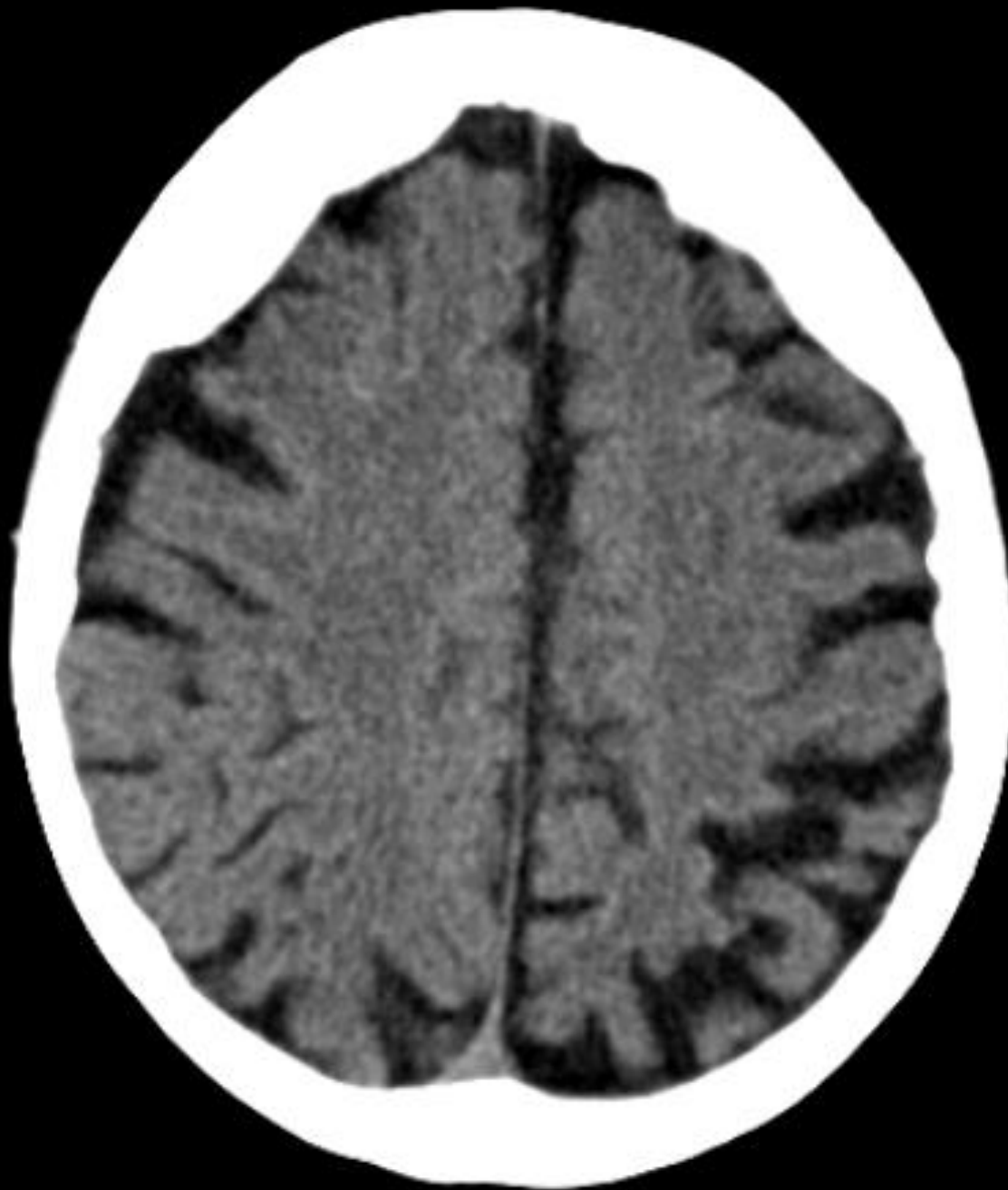


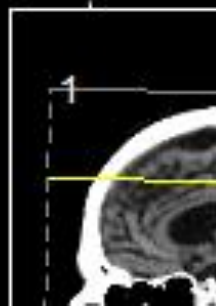


17



18





20

