
Page	Contents
S1	Table of Contents
S2	EPR Data
S3	UV-visible spectra

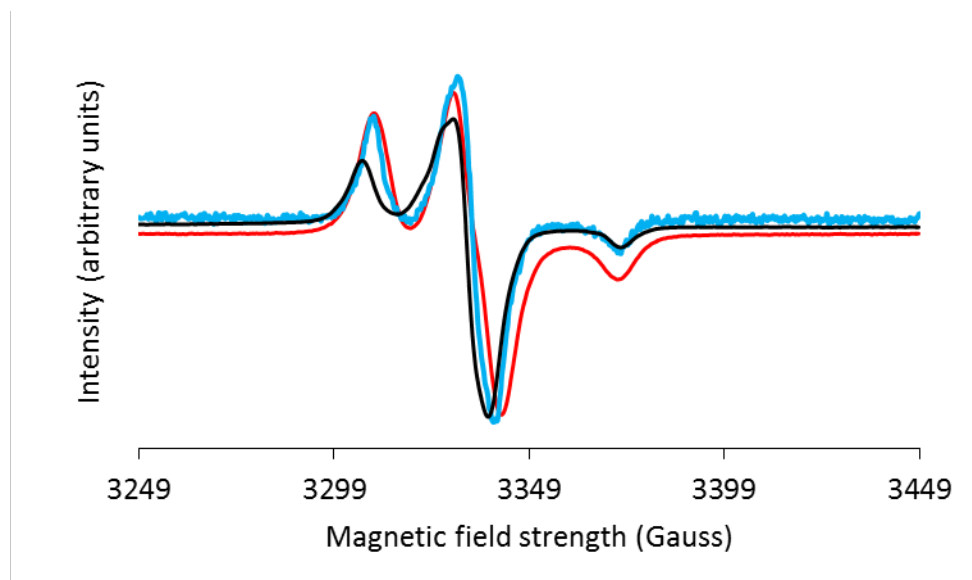


Figure S1. EPR spectra of $\text{EuCl}_2 + \text{O}_2 + \text{BMPO}$ (red), $\text{EuCl}_3 + \text{KO}_2 + \text{BMPO}$ (blue), and $\text{KO}_2 + \text{BMPO}$ (black) in methanol at 110 K under Ar.

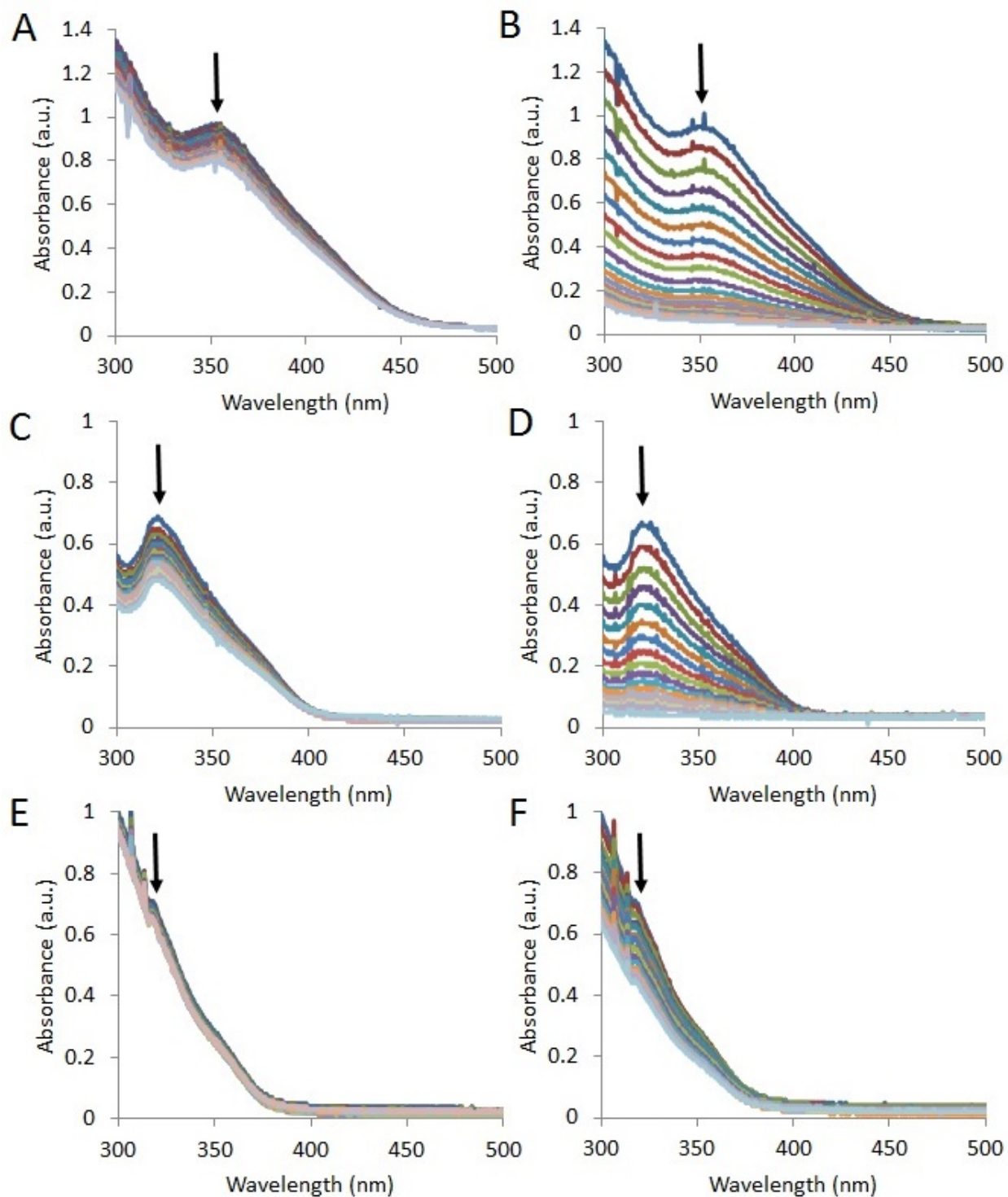


Figure S2. Representative UV-visible spectra of bromate oxidizing 1-Eu^{II} at (A) pH 7 and (B) 5, EuCl₂(aq) at (C) pH 7 and (D) 5, and 2-Eu^{II} at (E) pH 7 and (F) 5. Spectra were acquired every 15 minutes between 0 and 240 minutes, and the arrows point in the forward direction of time.