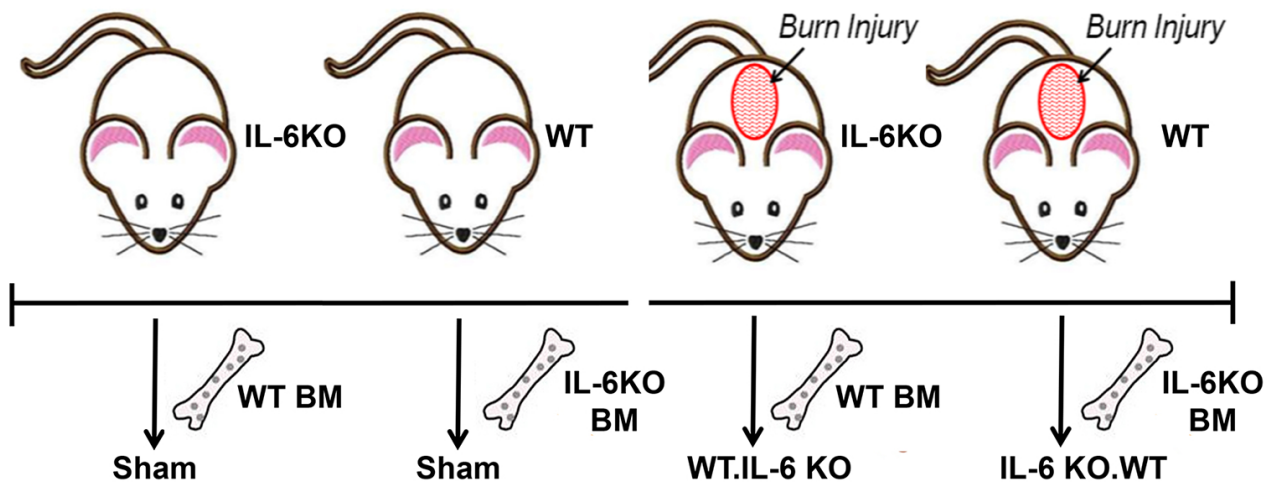
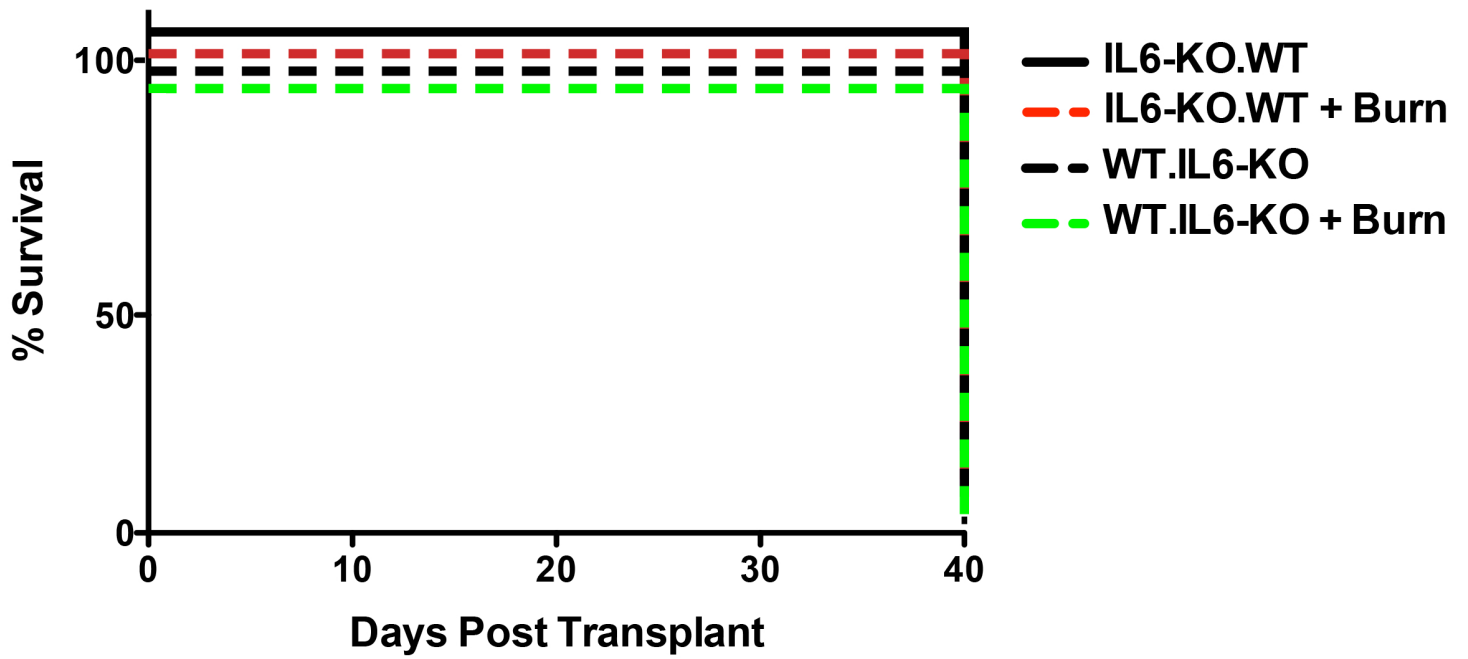


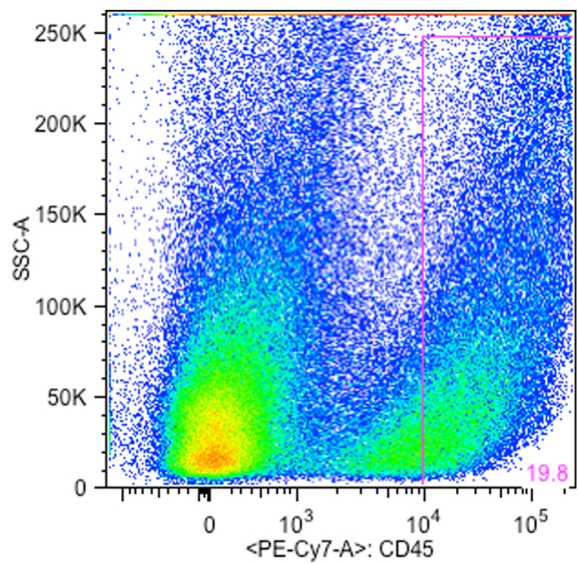
Supplemental Figure 1: No significant secretion of IL-4 in post burn IL6-KO mice.



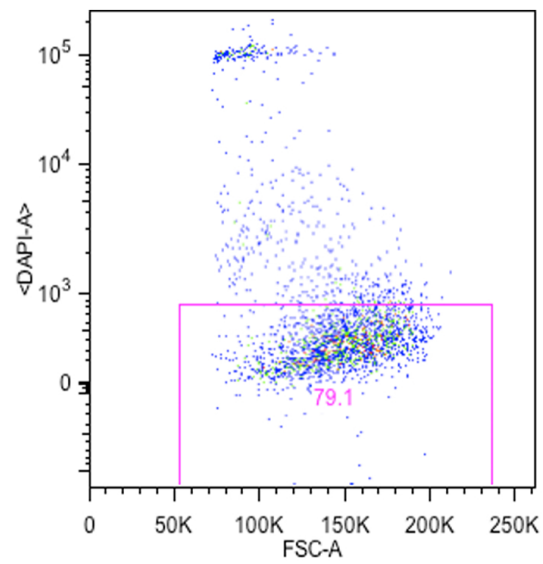
**Supplemental Figure 2: The different Chimera mouse permutations utilized in this study**



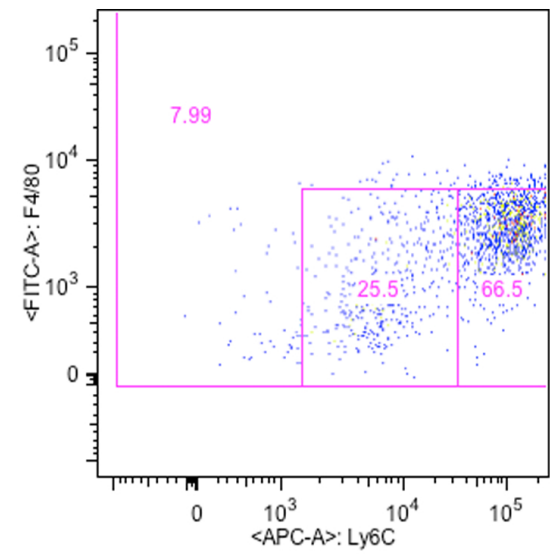
Supplemental Figure 3: Overall survival of lethally irradiated mice transplanted with bone marrow.



**Leukocyte Population**



**Gating on Live Cells**



**Macrophage Population**

**Supplemental Figure 4 : Confirmation of the presence of tissue macrophages in post irradiated mice**