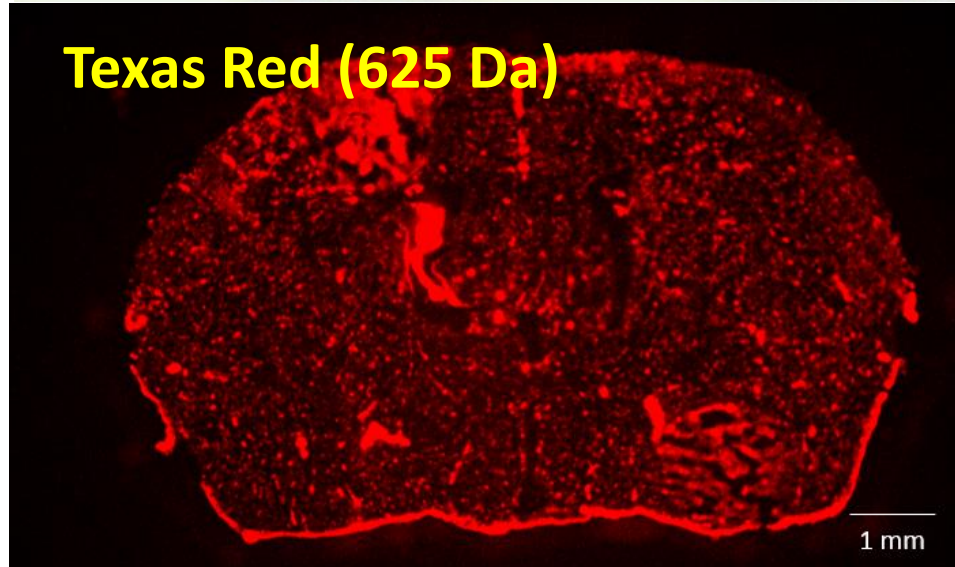
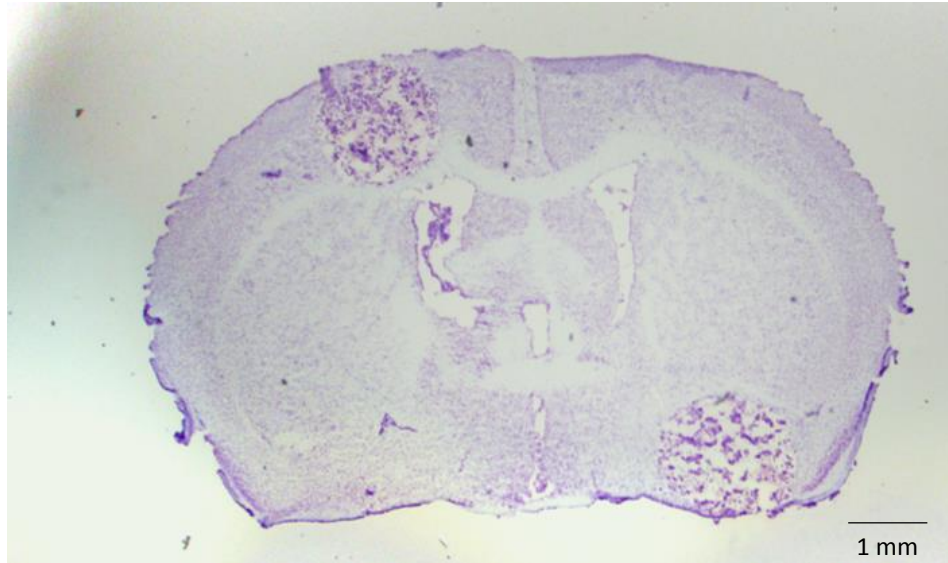
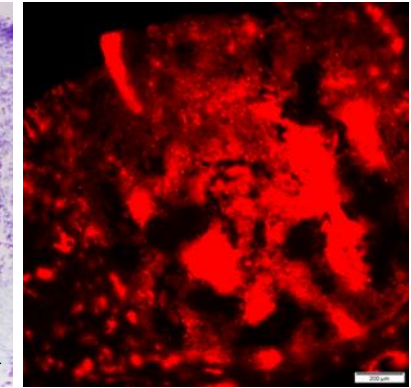
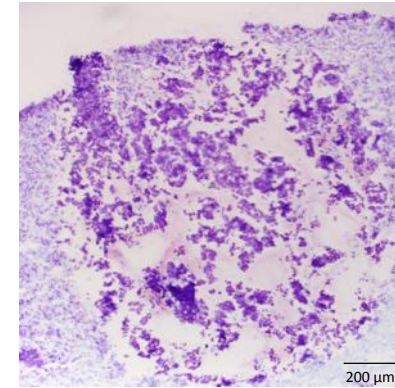


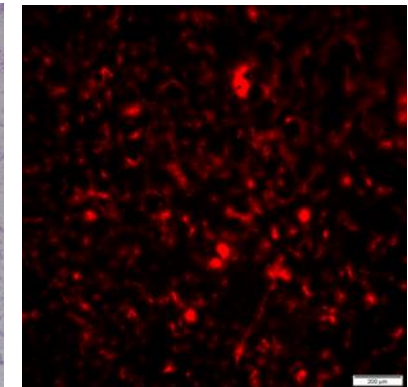
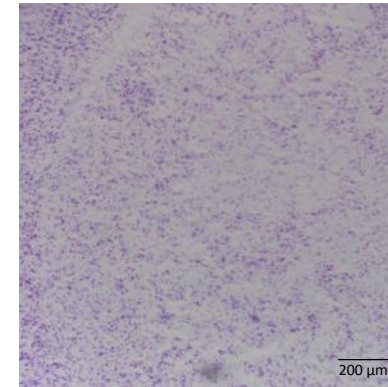
# S1. Brain Metastases of Breast Cancer Model



Tumor

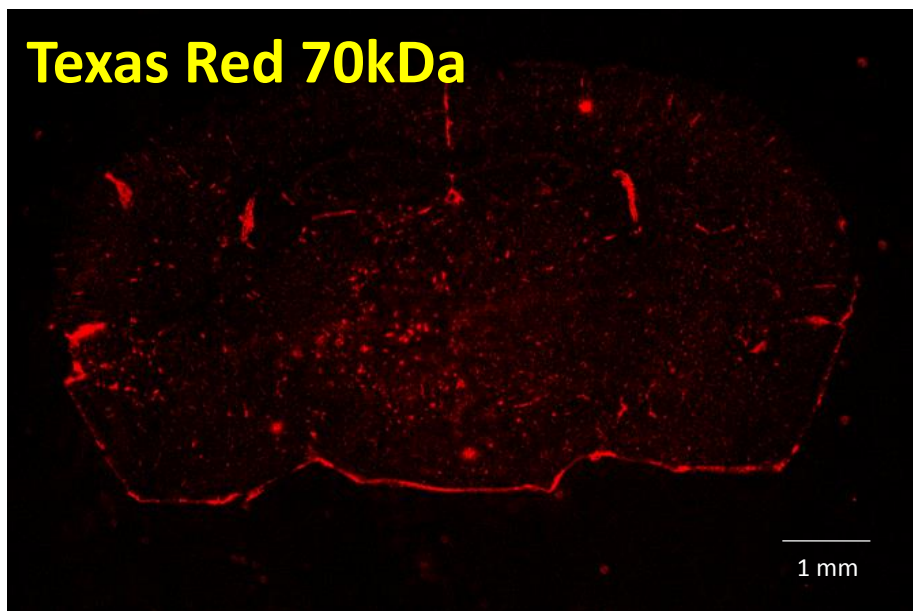
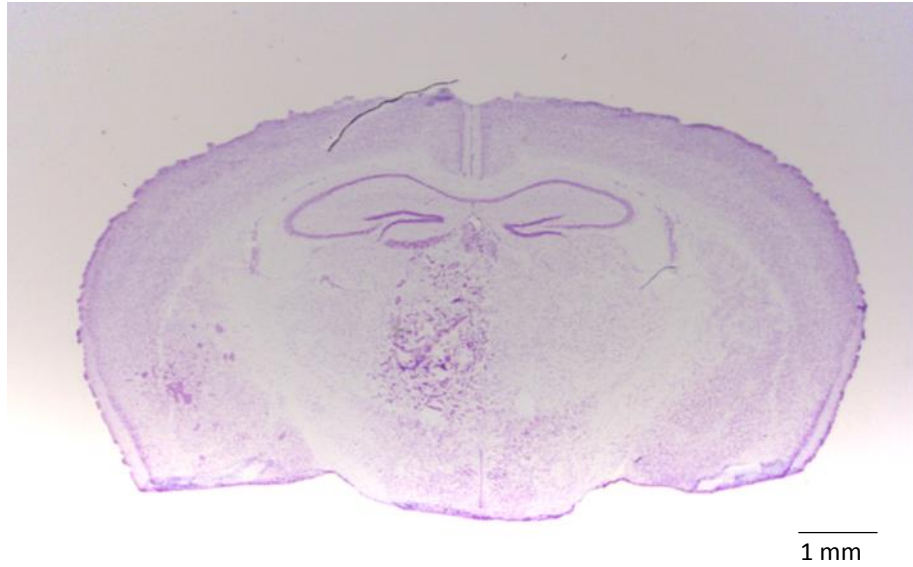


Normal Brain

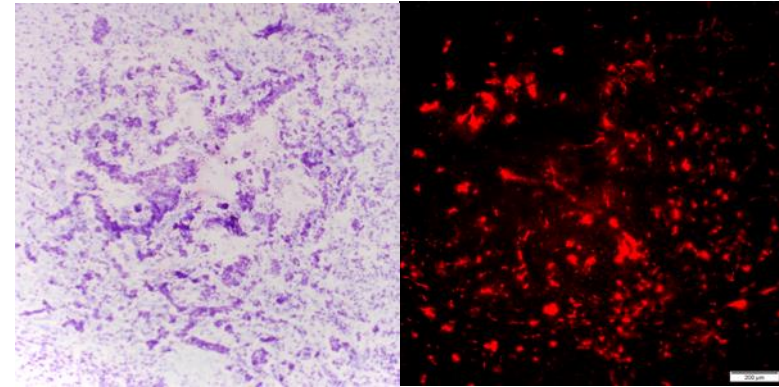


Representative images showing the histology (cresyl violet staining) and dye extravasation into the lesion

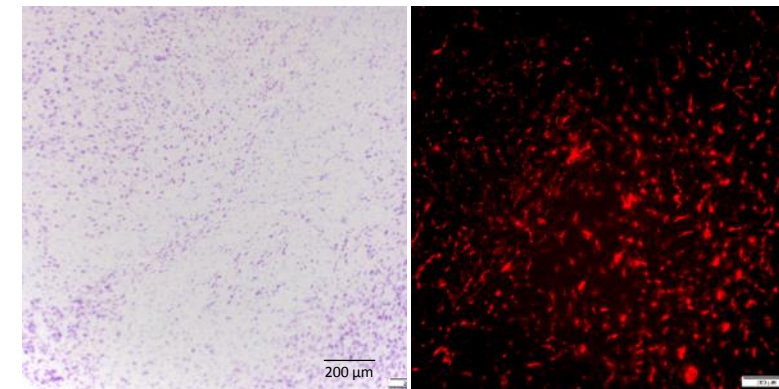
# S2. Brain Metastases of Breast Cancer Model



Tumor

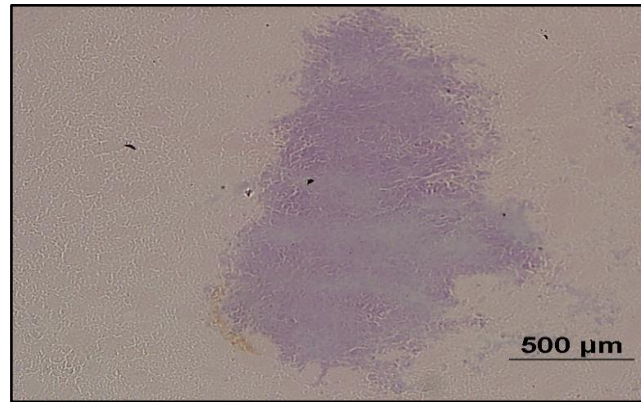
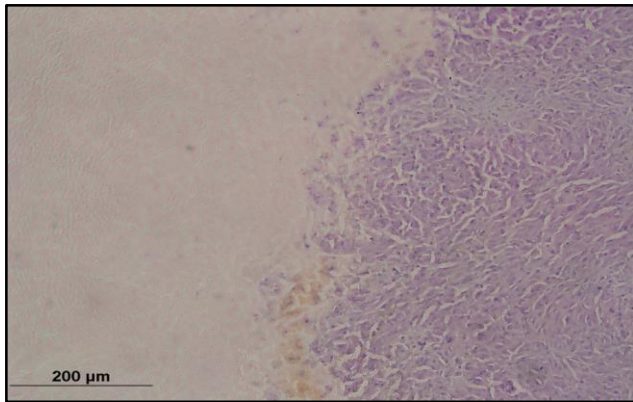
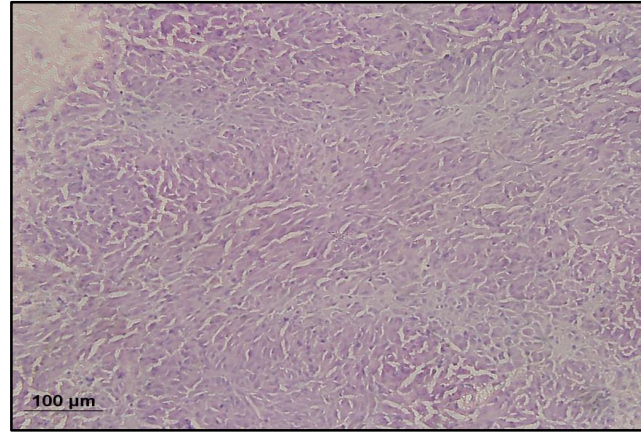
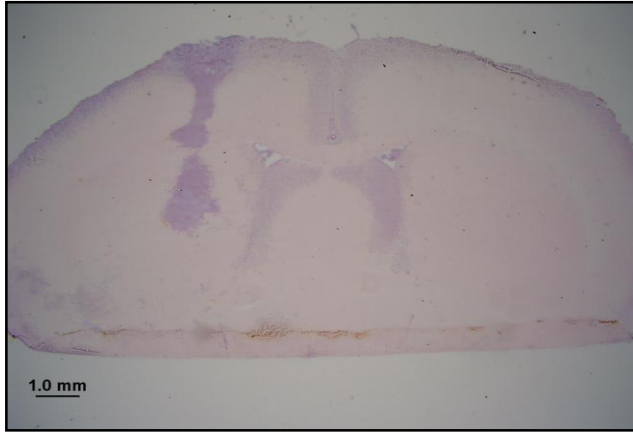


Normal Brain

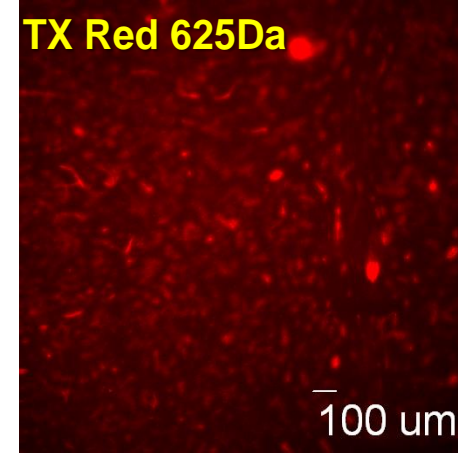


Representative images showing the histology (cresyl violet staining) and dye extravasation into the lesion

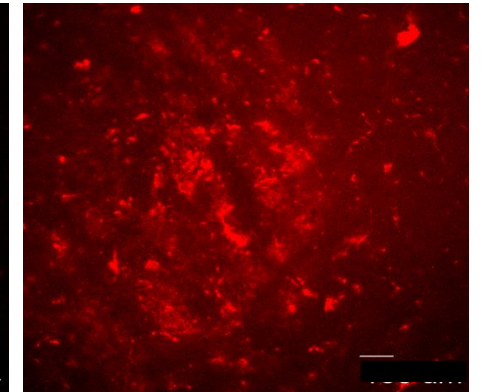
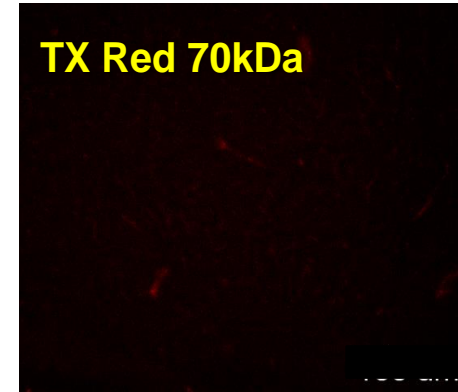
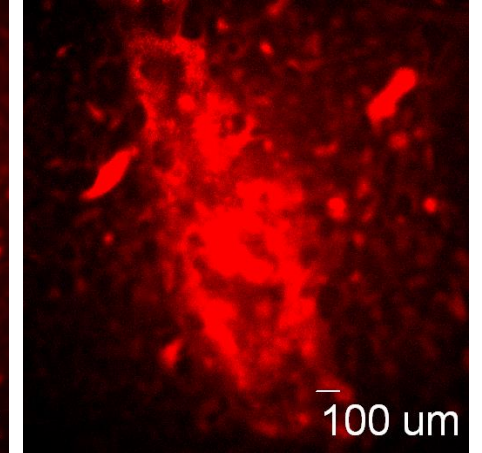
# S3. RG-2 Model



Normal Brain



Tumor



Representative images showing the histology (cresyl violet staining) and dye extravasation into the tumor