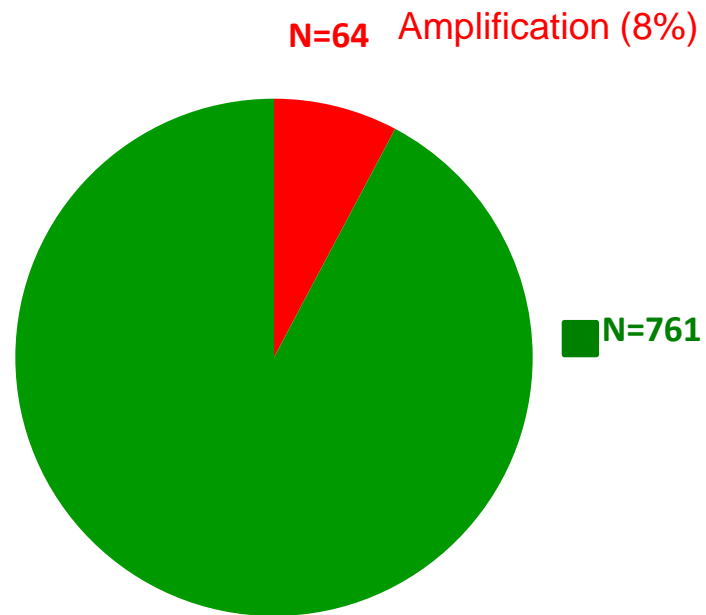


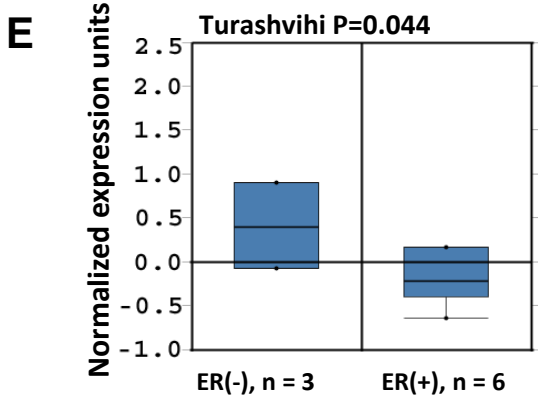
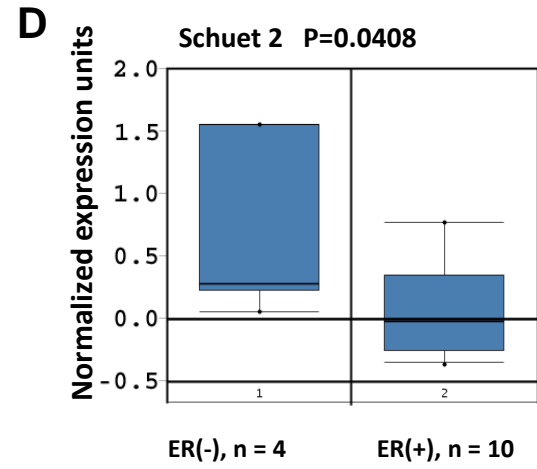
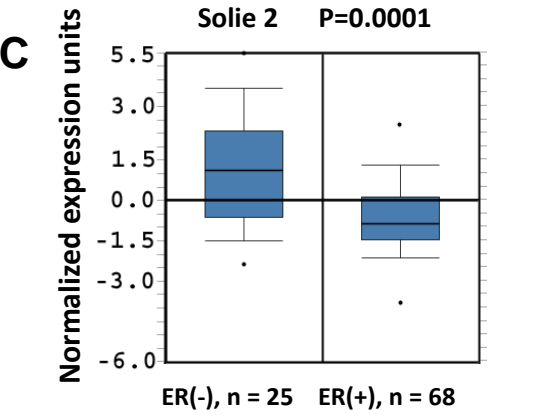
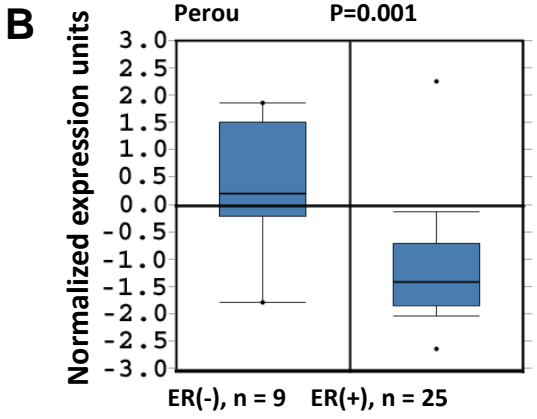
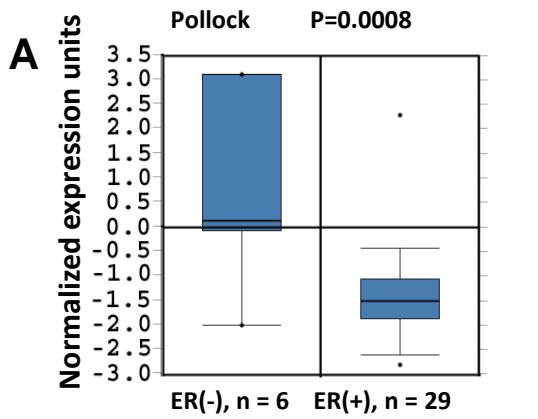
Supplementary Figure 1

Breast Invasive Carcinoma (TCGA, Nature 2012)

All Tumors(825 Samples)



Supplementary Figure 2



Supplementary Figure 3

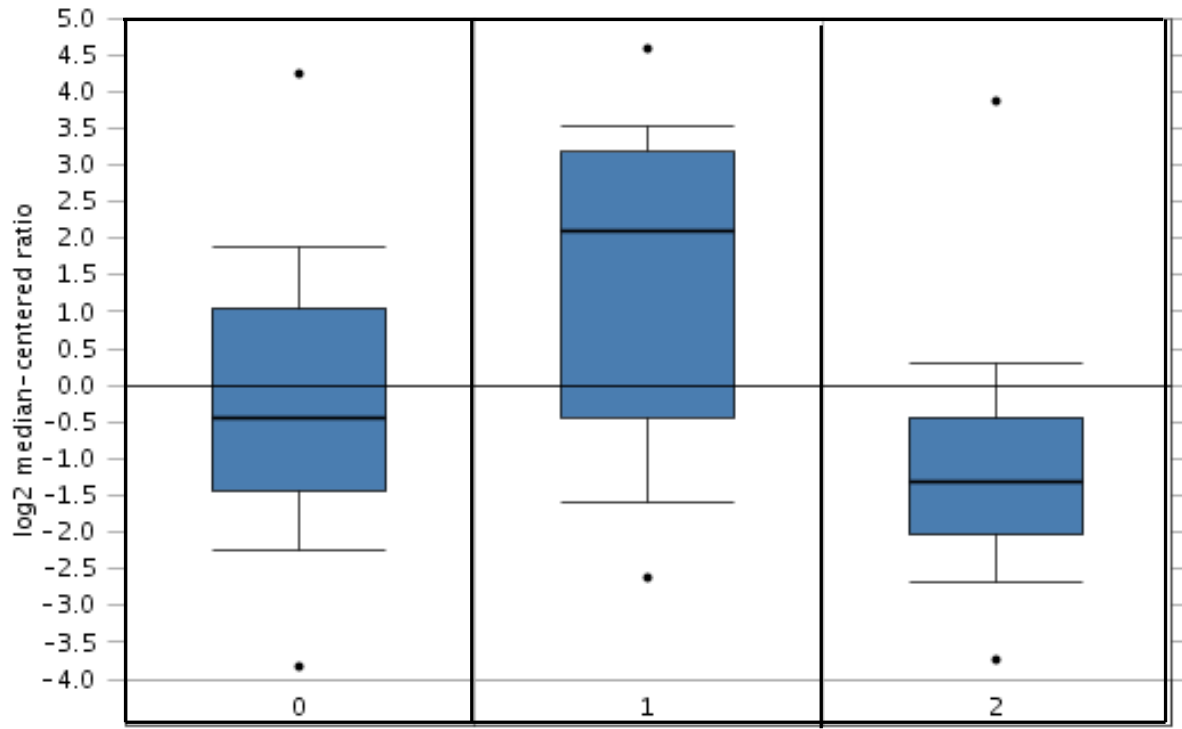


FOXC1 Expression in TCGA Breast

Grouped by Estrogen Receptor Status

TCGA Breast Statistics

Reporter:

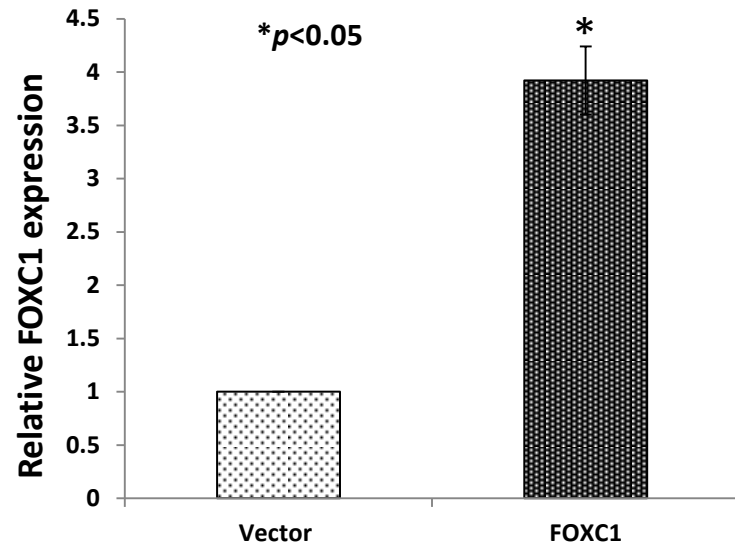


NO value(N=225)

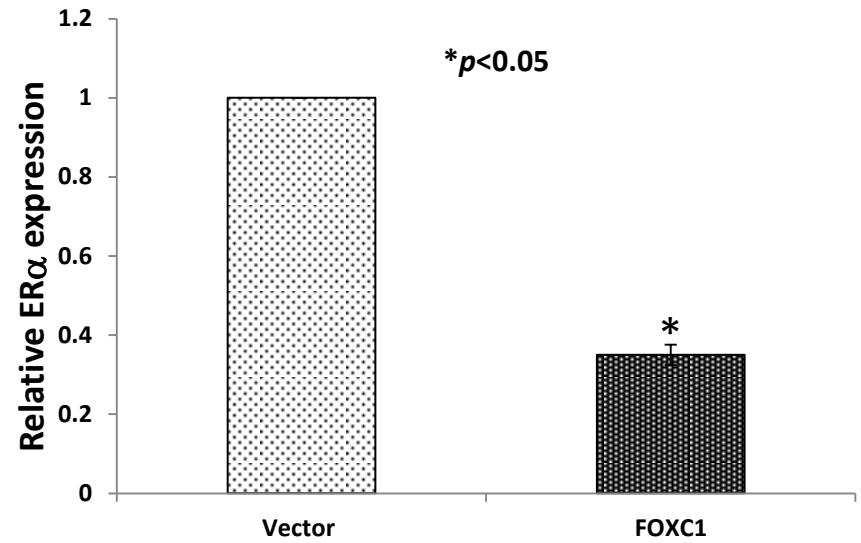
ER-(N=95)

ER+(N=273)

Supplementary Figure 4



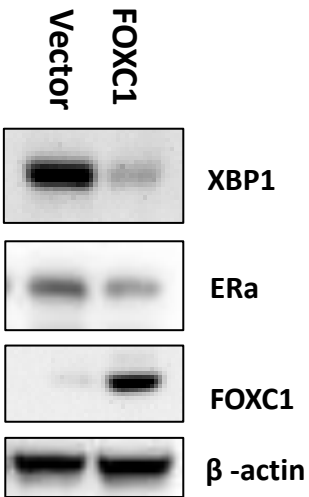
T47D



T47D

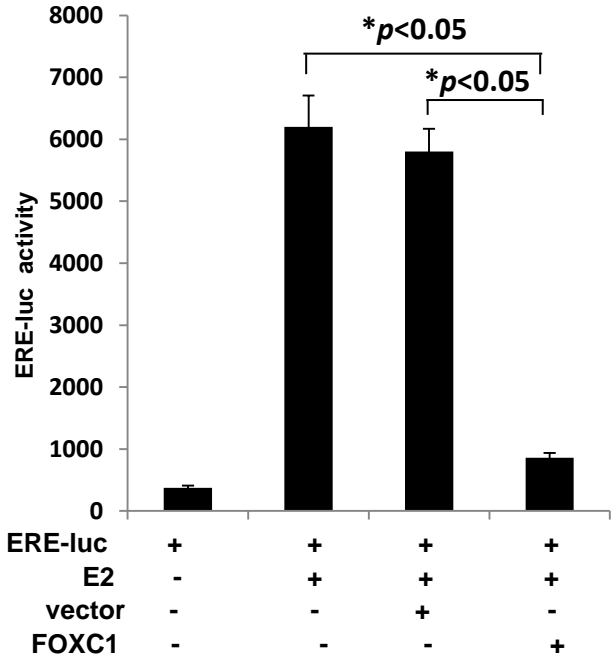
Supplementary Figure 5

A



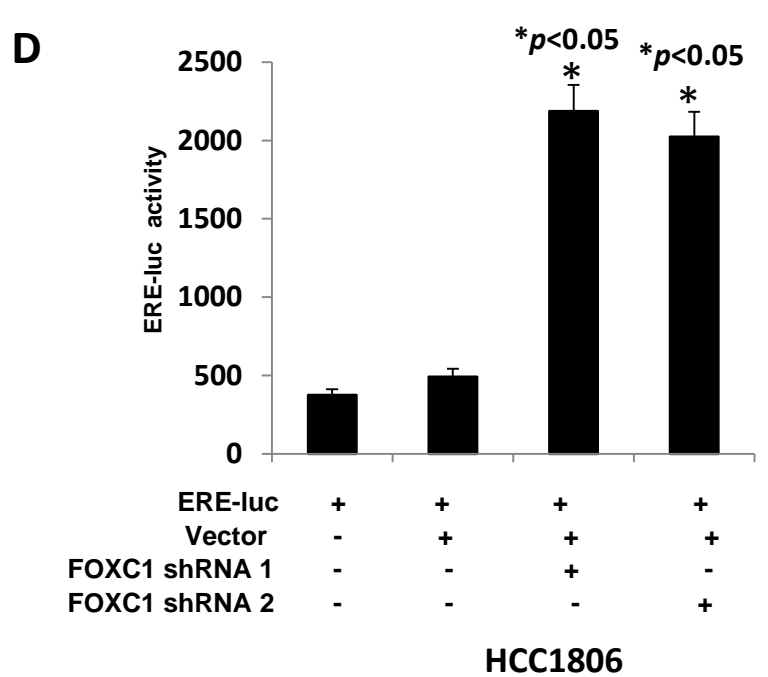
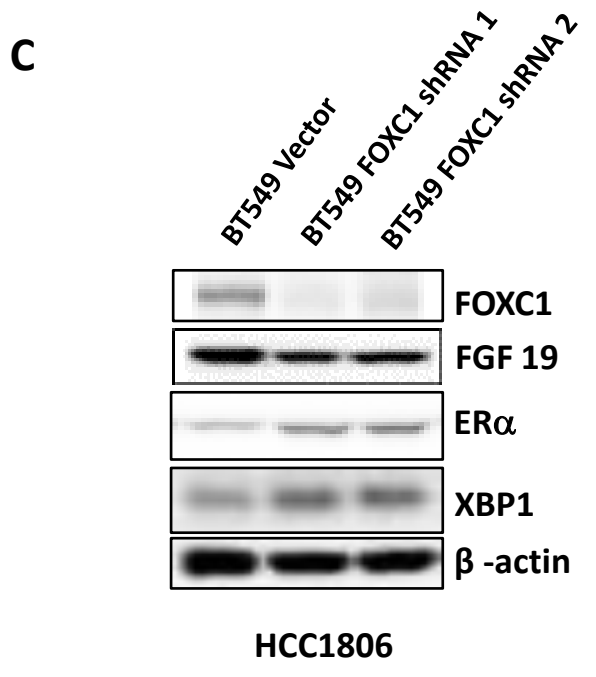
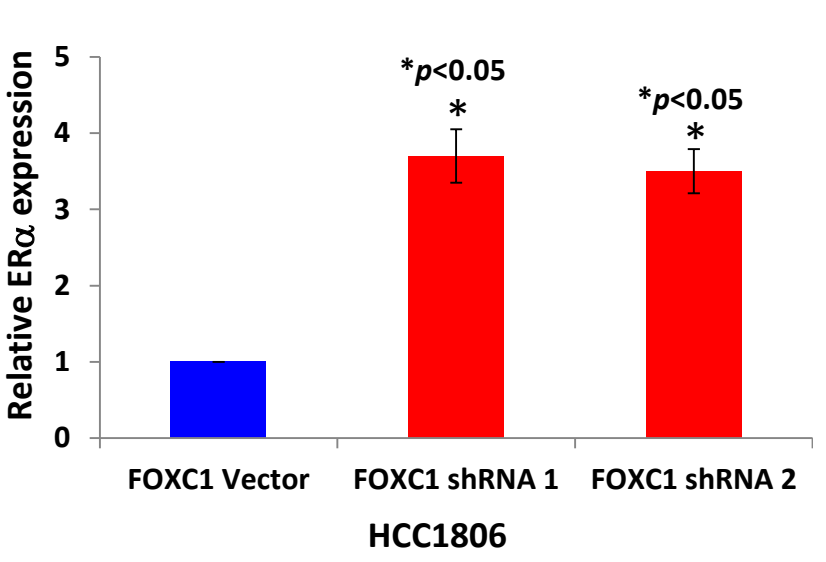
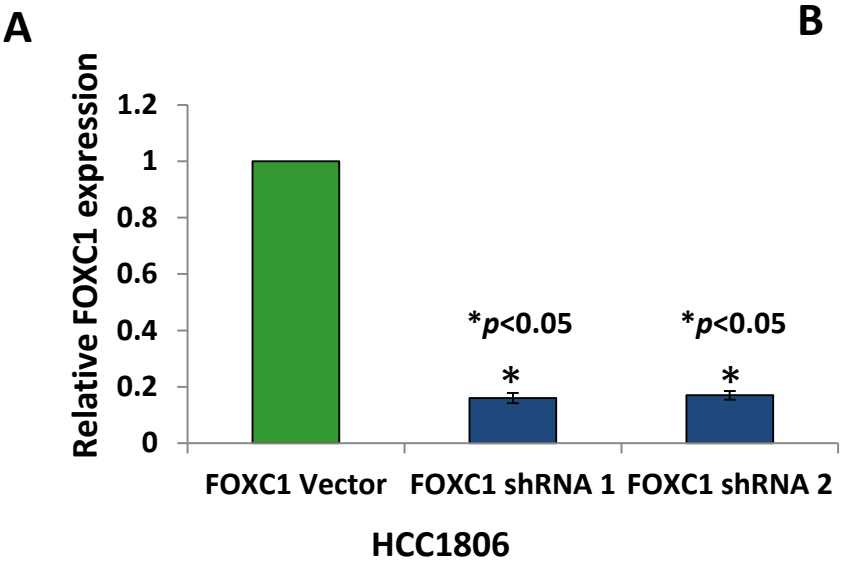
T47D

B

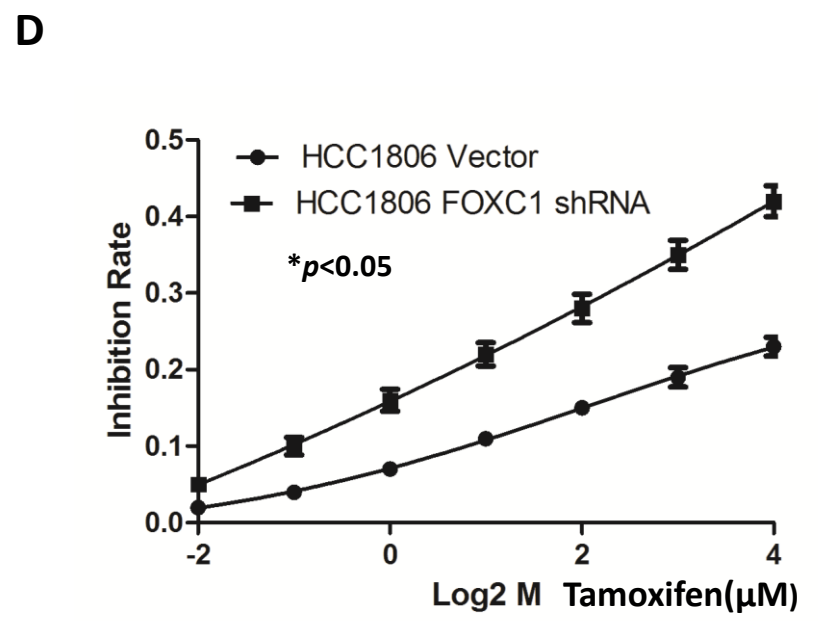
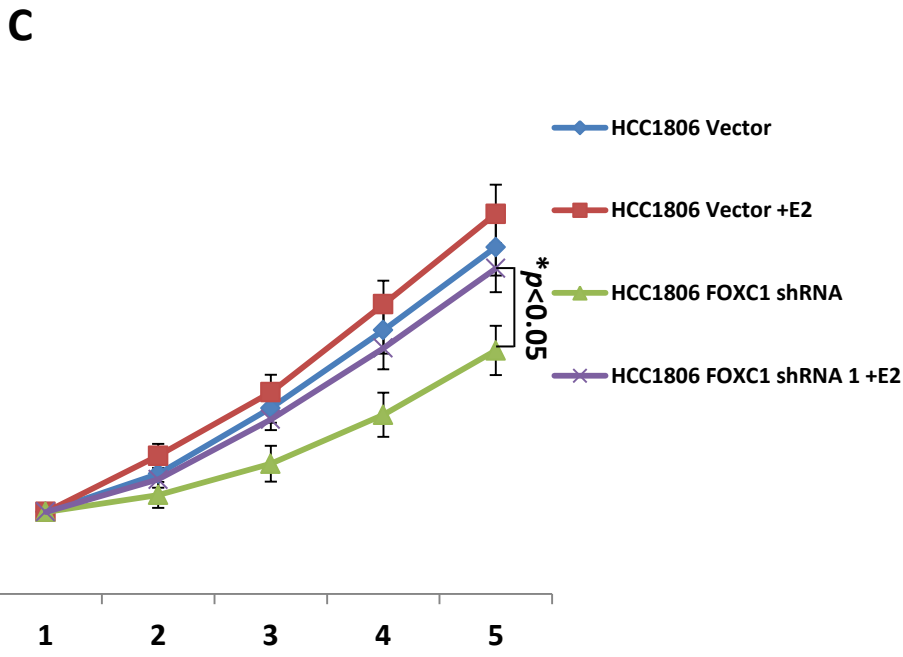
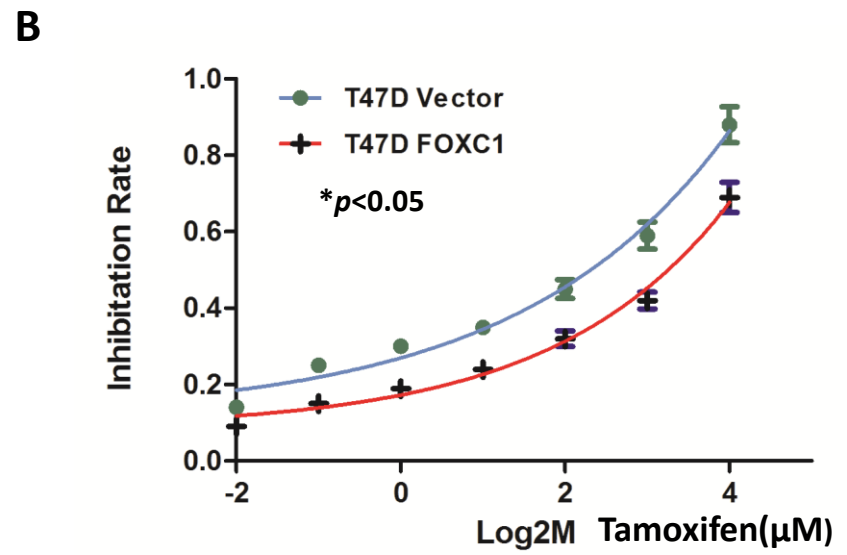
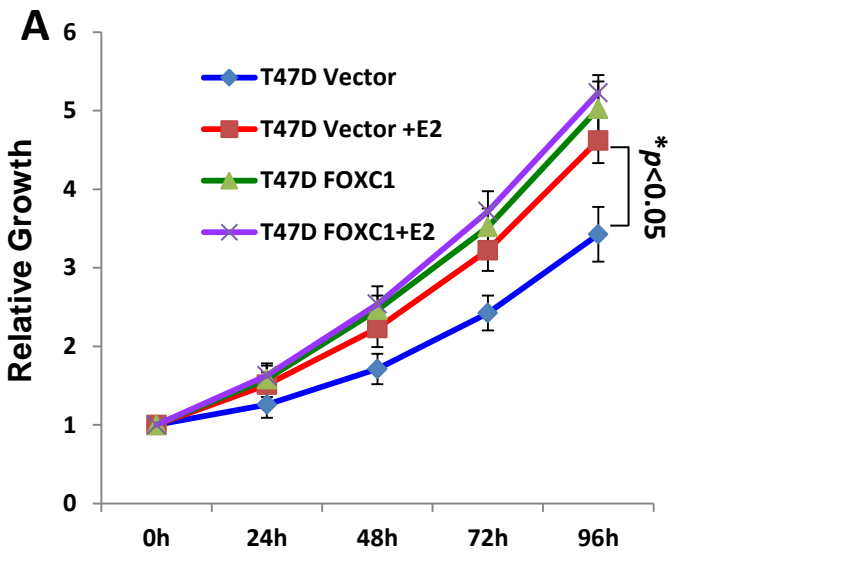


T47D

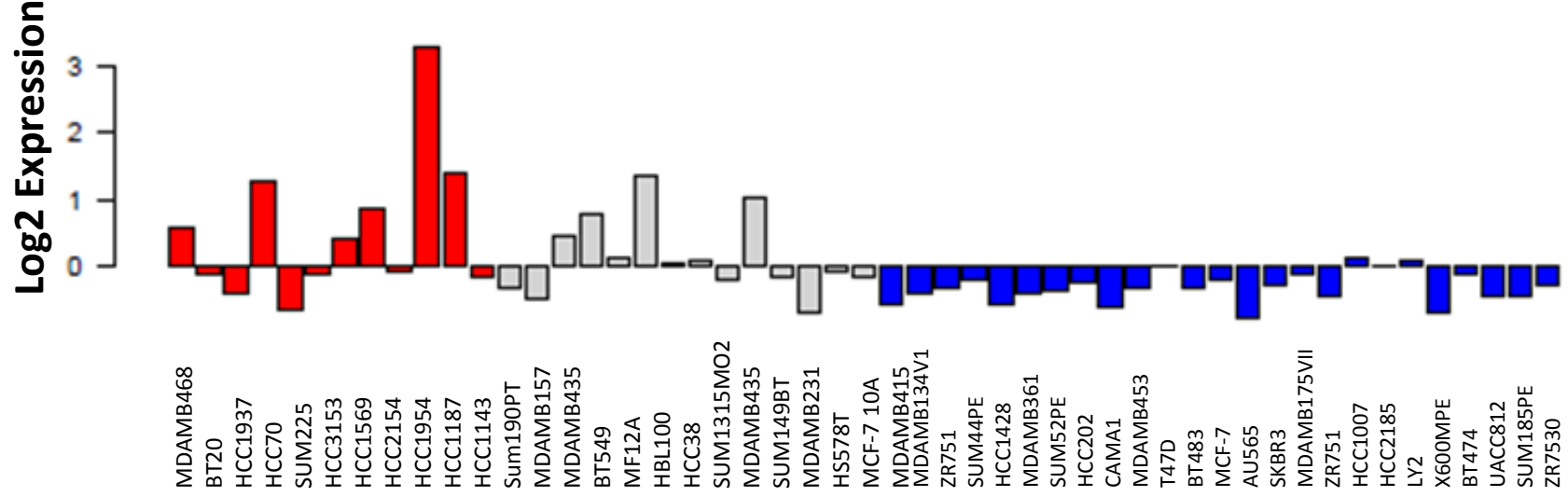
Supplementary Figure 6



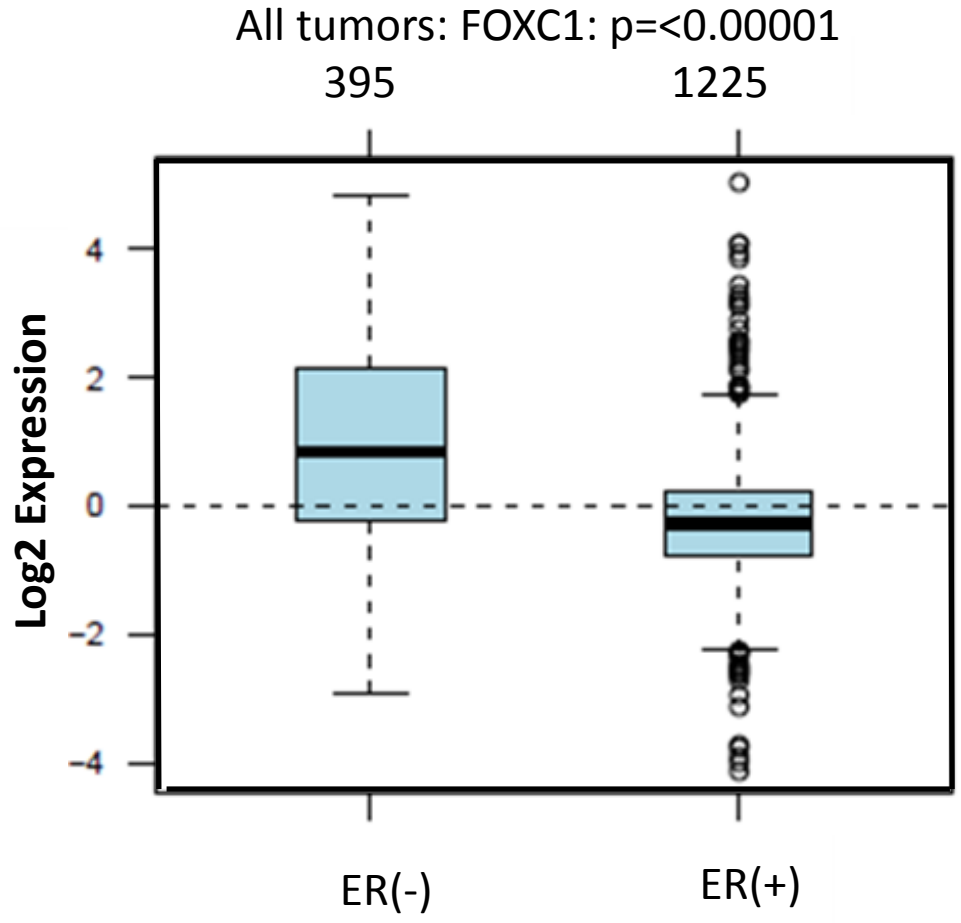
Supplementary Figure 7



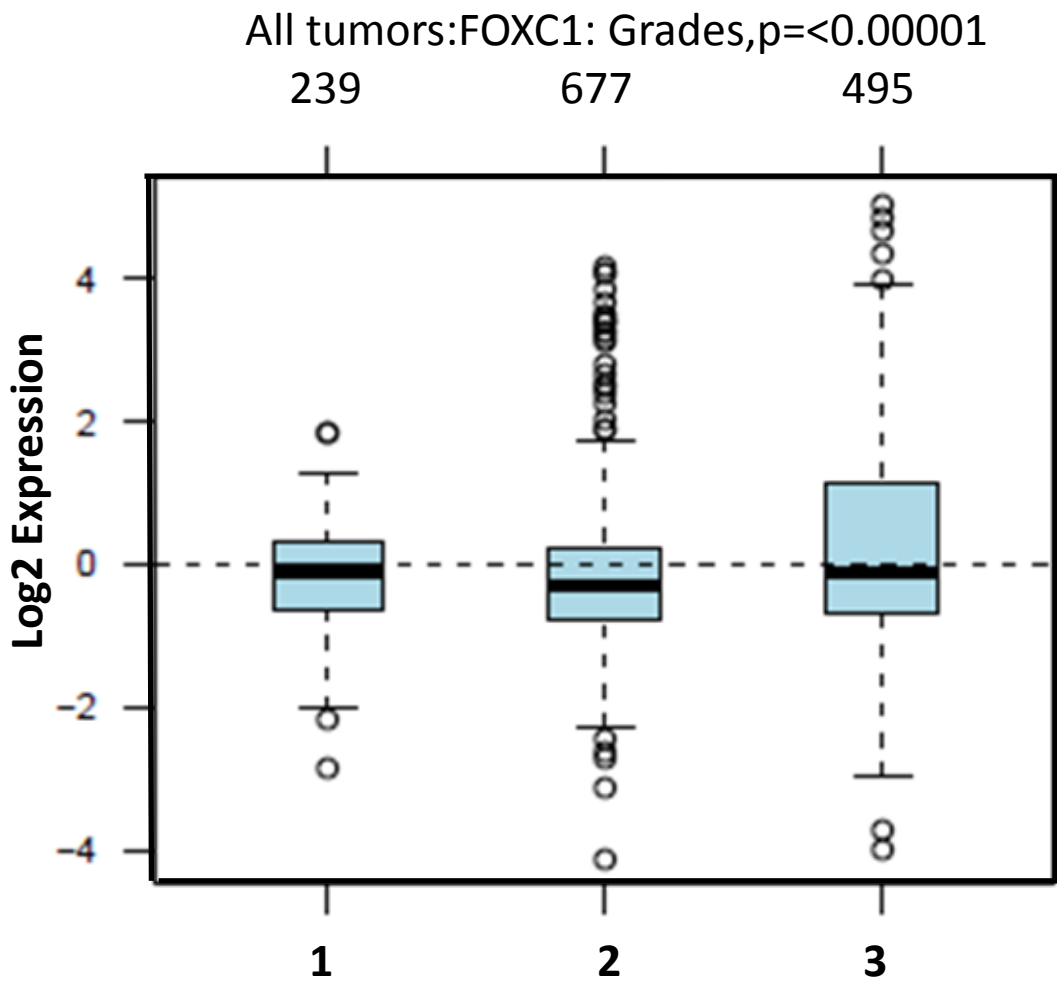
Neve expression for each cell line: FOXC1



Supplementary Figure 9



Supplementary Figure 10



Supplementary Table 1 Primers for RT-qPCR Assays

Biomarker	Forward	Reverse
ER	CGG TTA GAT TCA TCA TGC GGA AC[FAM]G	TGT GTA GAG GGC ATG GTG GAG
FOXC1	CGG TAT CCA GCC AGT CTC TGT AC[FAM]G	GTT CGG CTT TGA GGG TGT GTC
B2- microglobulin	TGTCACAGCCCAAGATAG	CCAGCAAGCAGAATTTGGAA