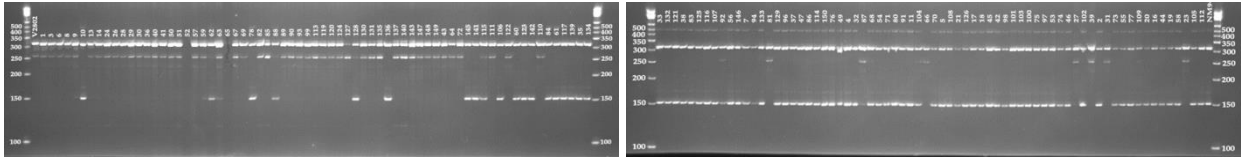
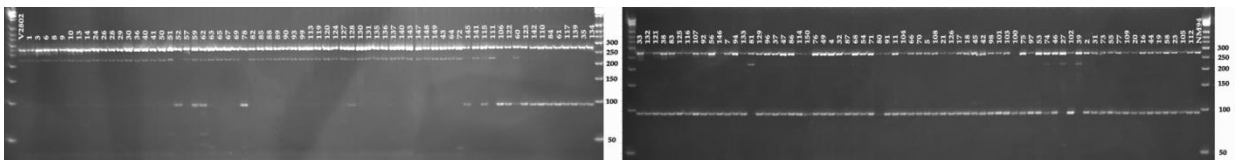


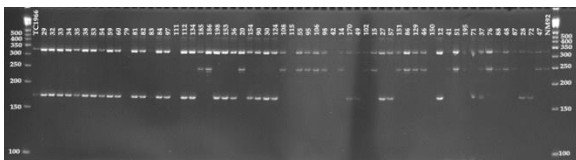
a)



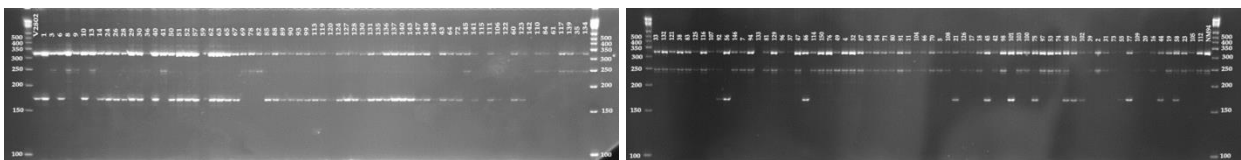
b)



c)



d)



e)

Additional file 1: Genotyping segregating mungbean populations with tetra markers: tetra_6 in population TC1966 x NM92 (a), tetra_7 in V2802 x NM94 (b), tetra_9 in V2802 x NM94 (c), and tetra_12 in TC1966 x NM92 (d) and V2802 x NM94 e).