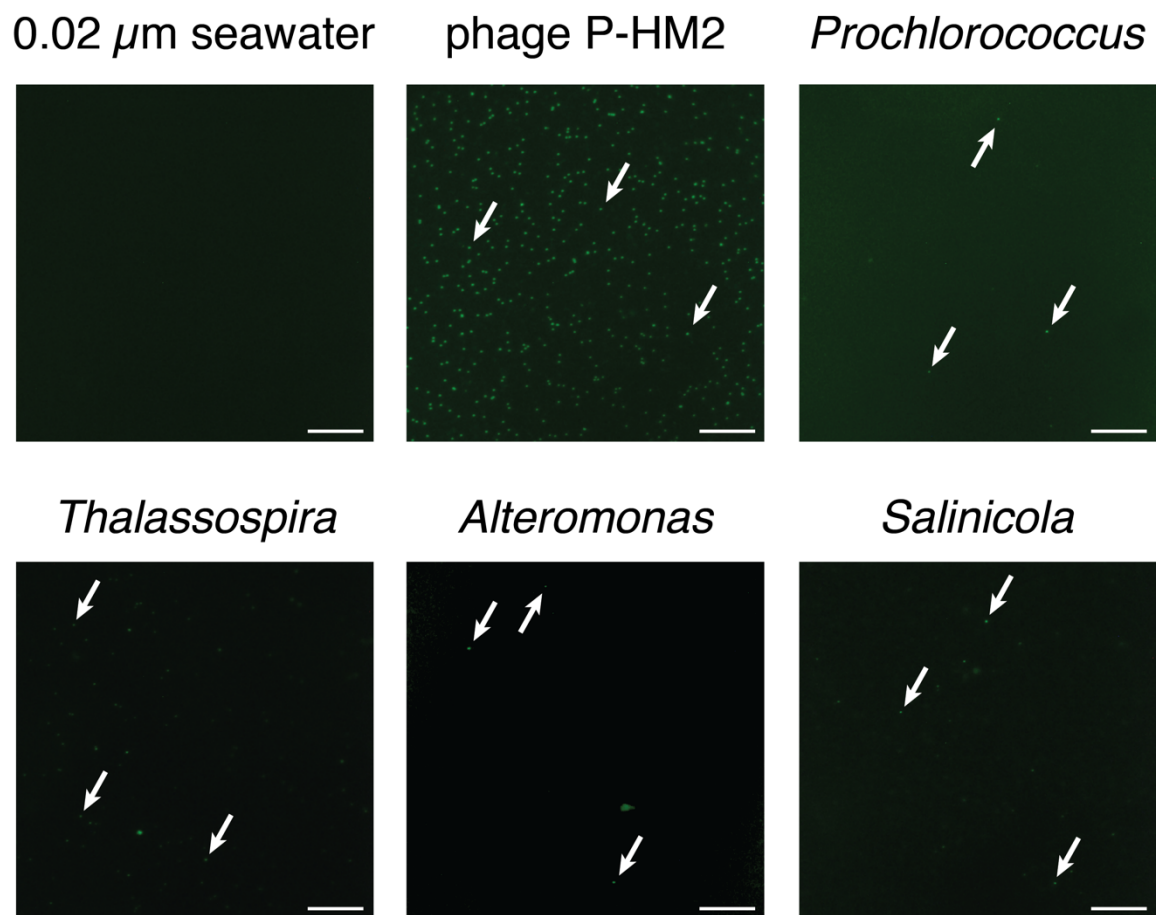
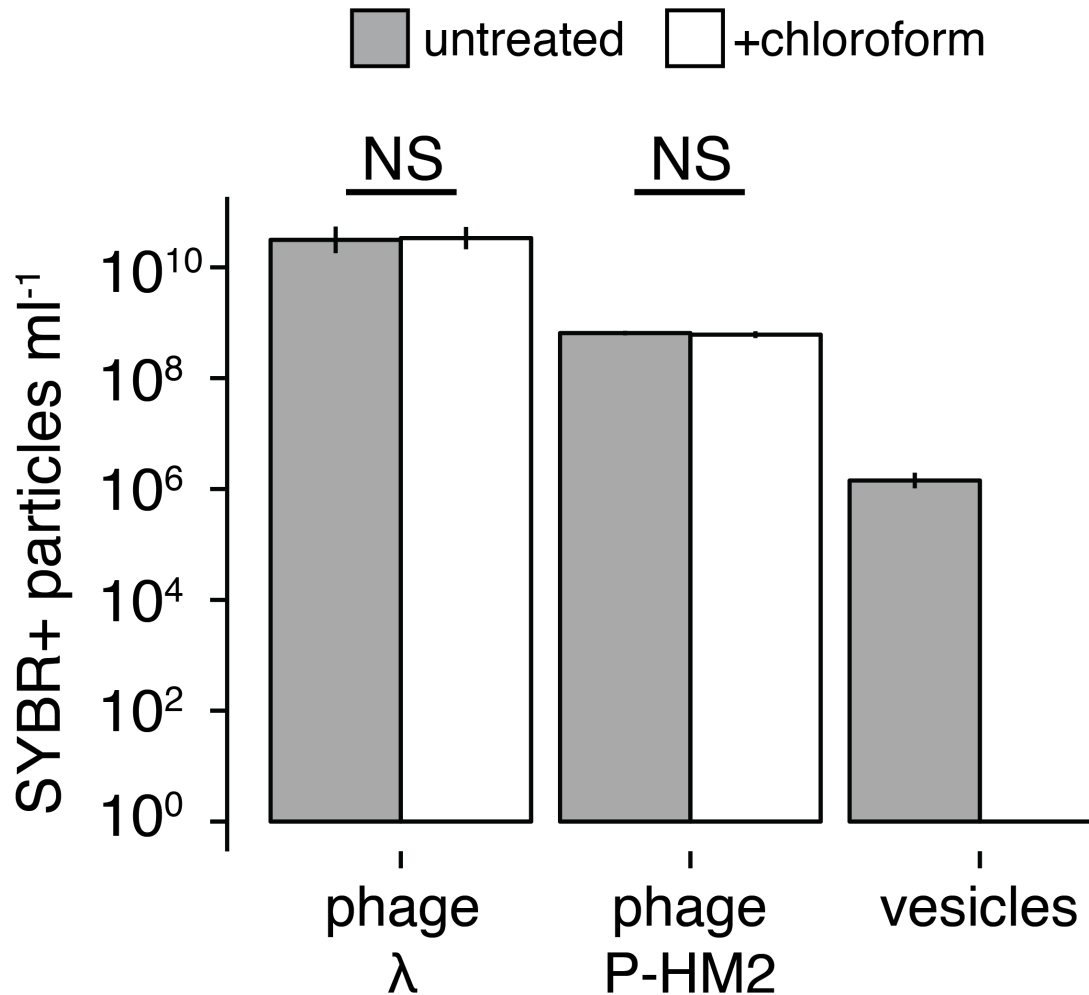


Supplemental Figure 1 Vesicle size distributions. Values indicate the average of three independent measurements of vesicles from each culture, as determined by nanoparticle tracking analysis.



Supplemental Figure 2 SYBR Gold-stained filters containing 0.02 μm -filtered seawater (negative control), the myovirus P-HM2 (positive control), or vesicles purified from cultures of the indicated bacterium. Arrows highlight representative examples of SYBR-visible particles. Scale bars: 10 μm in all panels.



Supplemental Figure 3 Impact of chloroform treatment on epifluorescence counts of vesicles and phages. Concentrations of SYBR Gold-visible particles with and without chloroform treatment, as determined by either flow cytometry (phage lambda) or epifluorescence microscopy (myovirus P-HM2 and vesicles purified from *Prochlorococcus*). Chloroform significantly impacted the concentrations of SYBR-visible vesicles ($P < 0.05$, two-tailed t test) but not the phages; NS= not significant. Values indicate the mean and SD of two to three biological replicates.