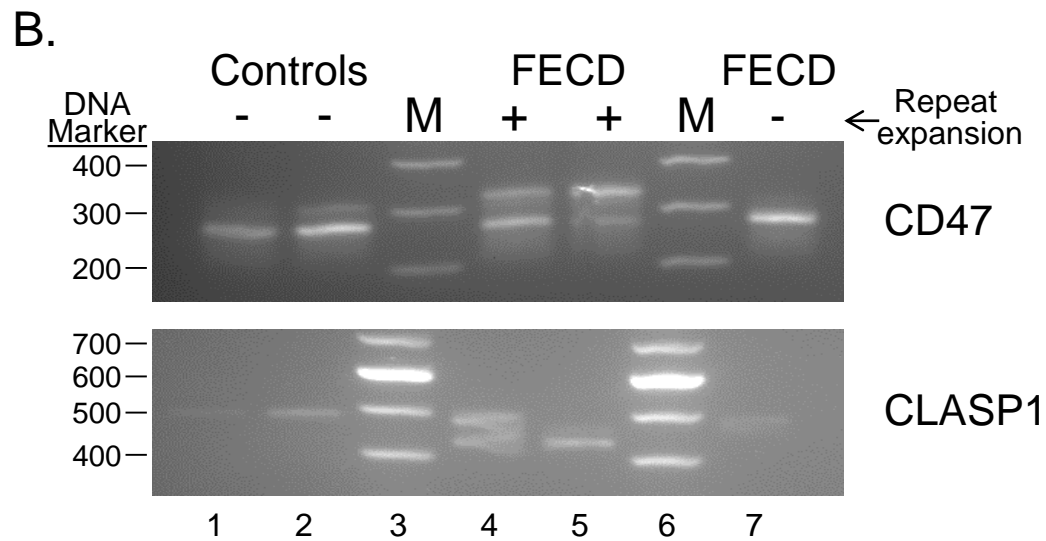
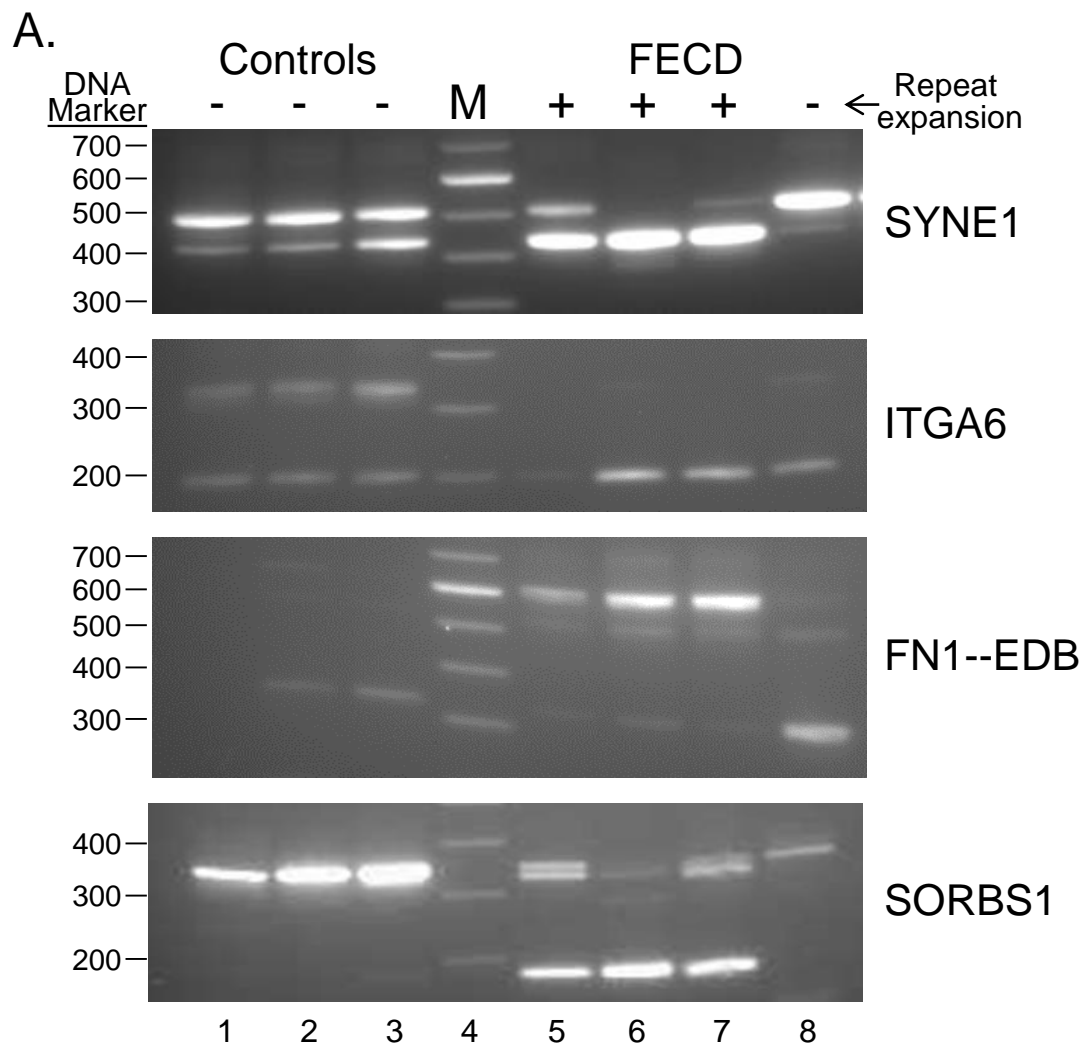


Supplementary Figure 1



Supplementary Figure 1. RT-PCR validation of differential splicing events in the CE from FECD patients. RT-PCR using primers that flank selected exons as listed in Table 2 and Supplementary Table 2 was used to assess exon inclusion from the genes shown in corneal endothelial RNA samples. (A) The repeat expansion status of each control (lanes 1-3) and FECD patient (lanes 5-8) sample is shown (+, >45 repeats; -<45 repeats). Lane 4 contains size markers. (B) The repeat expansion status of each control (lanes 1-2) and FECD patient (lanes 4, 5 and 7) sample is shown (+, >45 repeats; -<45 repeats). Lanes 3 and 6 contain DNA size markers.