

Supporting Information for: *Withania Somnifera* Root Extract Enhances Chemotherapy Through ‘Priming’

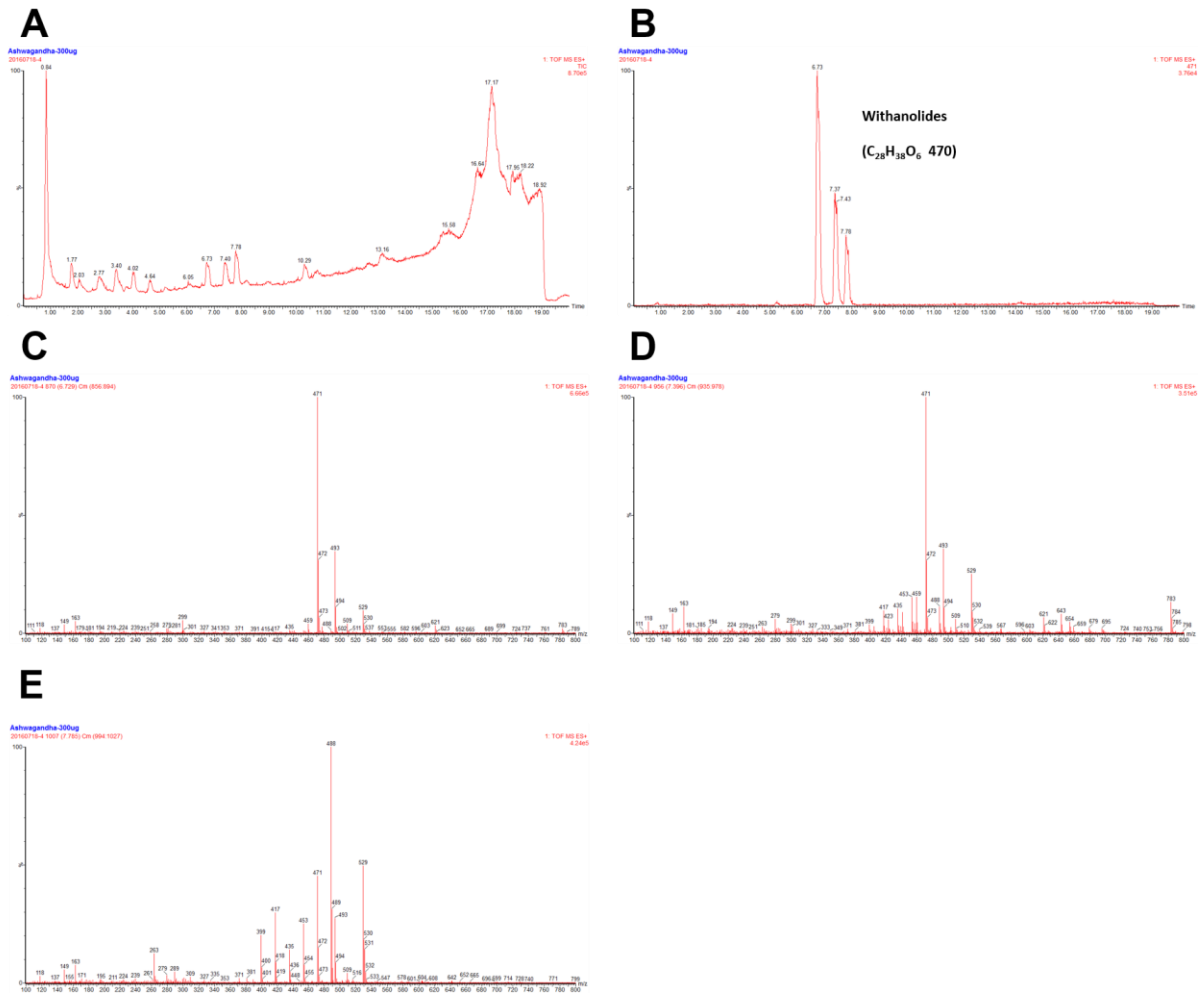


Figure S2. HPLC-MS/MS data (A) Ashwagandha root extract total ion chromatogram, (B) Ashwagandha root extract 471 [M+H]⁺ ion chromatogram, (C) Withanolide, peak 1 mass spectrum, (D) Withanolide, peak 2 mass spectrum, (E) Withanolide, peak 3 mass spectrum.