

Supporting Information for: *Withania Somnifera* Root Extract Enhances Chemotherapy Through ‘Priming’

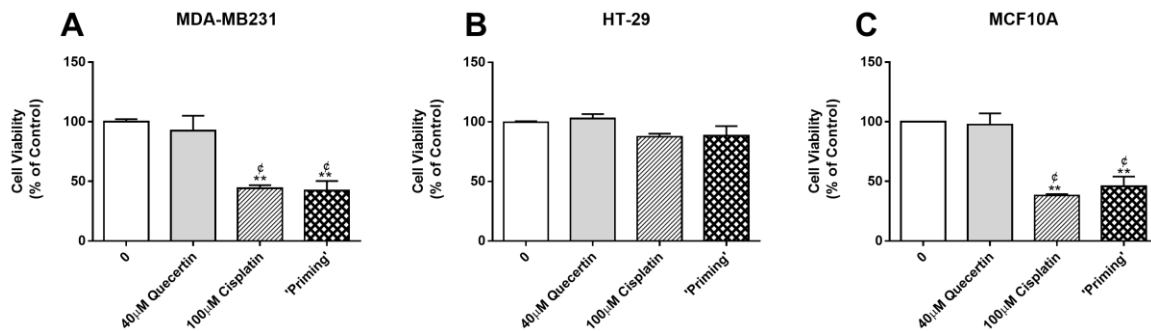


Figure S4. The effect of ‘priming’ with Quercetin prior to cisplatin treatment on cell viability. Cell viability was examined following treatment with quercetin (40 μM), cisplatin (100 μM) and ‘priming’ with quercetin prior to cisplatin treatment. **(A)** MDA-MB231, **(B)** HT-29 **(C)** MCF10A cell viability following treatments. Data represents the average of 3 independent experiments \pm SEM. ** $p < 0.01$ vs non-treatment, ϕ $p < 0.05$ vs Quercetin.