

Figure S1

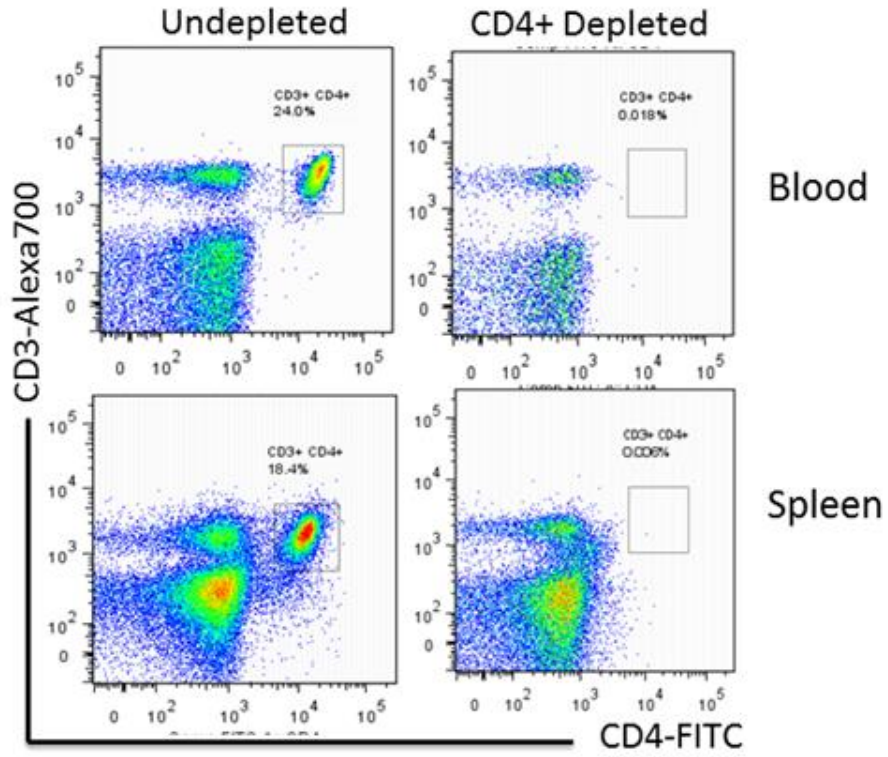


Figure S2

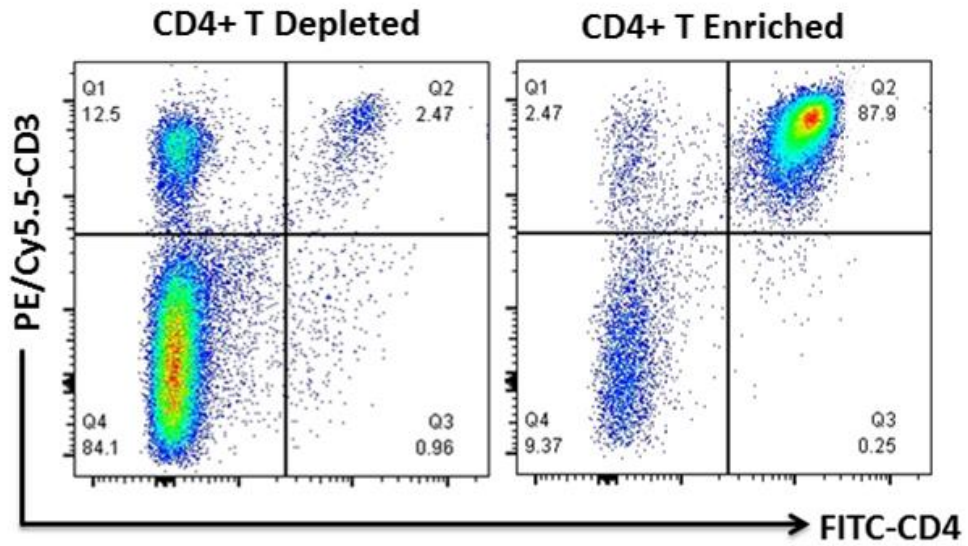


Figure S3

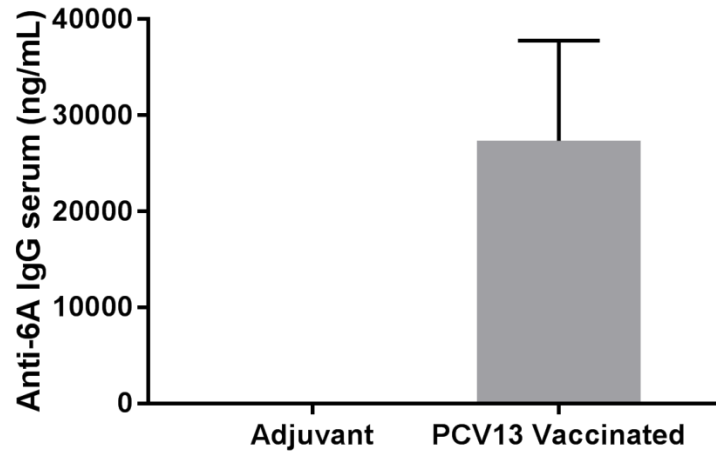


Figure S1: Mice were intraperitoneally injected with 200 μ g of 1 anti CD4 antibody with a subsequent booster of 50 μ g anti CD4 antibody 3 days later. Spleens and blood were screened for CD4 T cells using anti CD3 and CD4 antibodies. Representative flow cytometry plots of spleens and blood from naïve mice. The same procedure was applied to PhtD vaccinated or adjuvant control mice.

Figure S2: CD4⁺ T cells from PhtD vaccinated or adjuvant control were magnetically purified and purity was assessed by flow cytometry by using antibodies against CD4 (FITC) and CD3 (PE/Cy5.5).

Fig S3: Anti-6A (*Spn*) serum IgG titers in adjuvant control and PCV13 vaccinated mice.