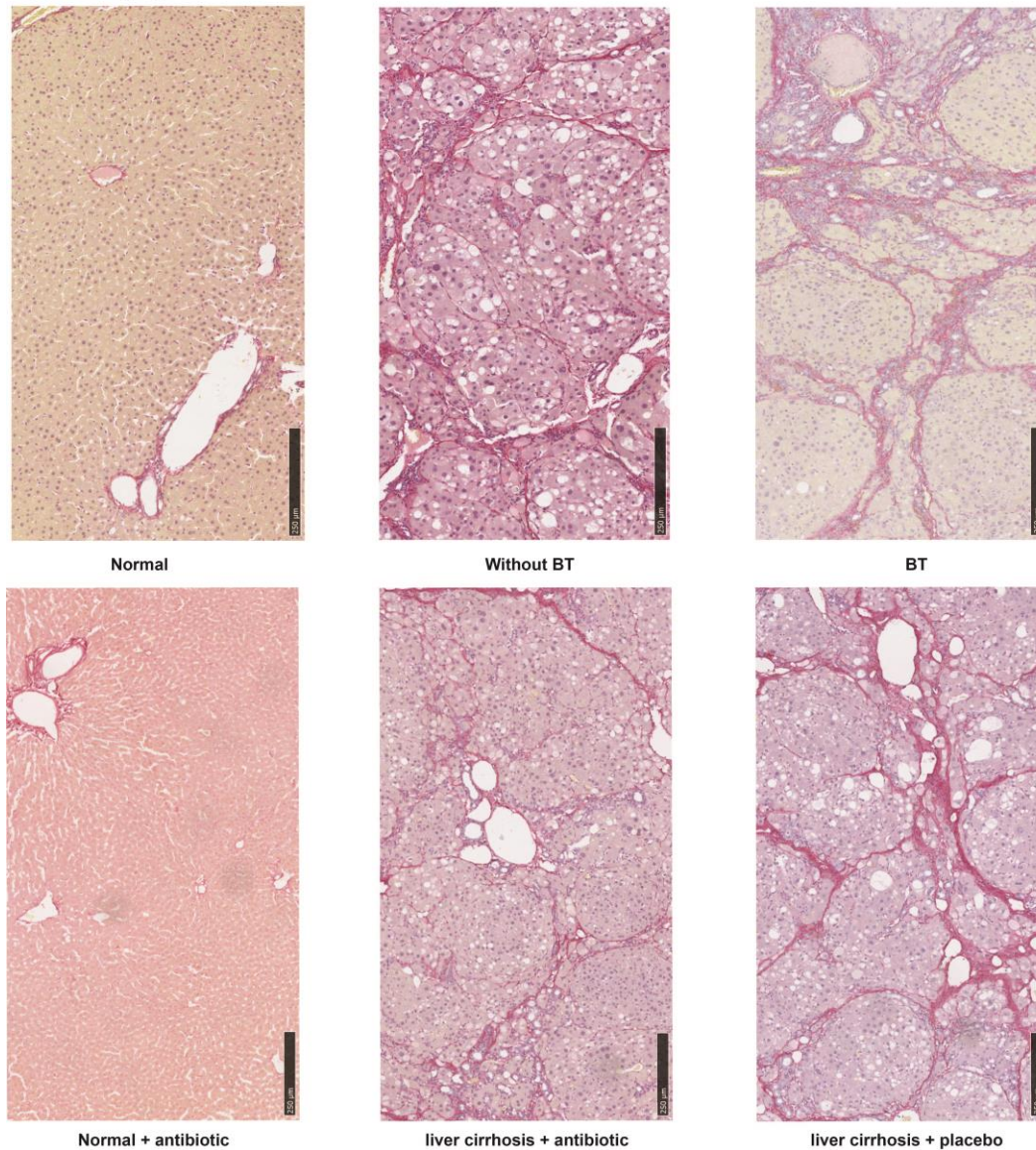


Bacterial translocation aggravates CCl₄-induced liver cirrhosis by regulating CD4⁺ T cells in rats

Haiyan Shi^{1,2#}, Longxian Lv^{1,2#}, Hongcui Cao^{1,2}, Haifeng Lu^{1,2}, Ning Zhou^{1,2}, Jiezuan Yang^{1,2},
Haiyin Jiang^{1,2}, Huihui Dong, Xinjun Hu^{1,2}, Wei Yu^{1,2}, Xiawei Jiang^{1,2}, Beiwen Zheng^{1,2}, Lanjuan
Li^{1,2*}

Supplementary figure 1

Supplementary Figure 1



Supplementary Figure 1. BT aggravates the CCl_4 - induced liver injury. To visualize collagen deposition, the formalin-fixed, paraffin-embedded liver samples were stained with Sirius Red. Histological examinations and representative images were taken using a NanoZoomer 2.0 RS optical microscope.