

Supplementary files

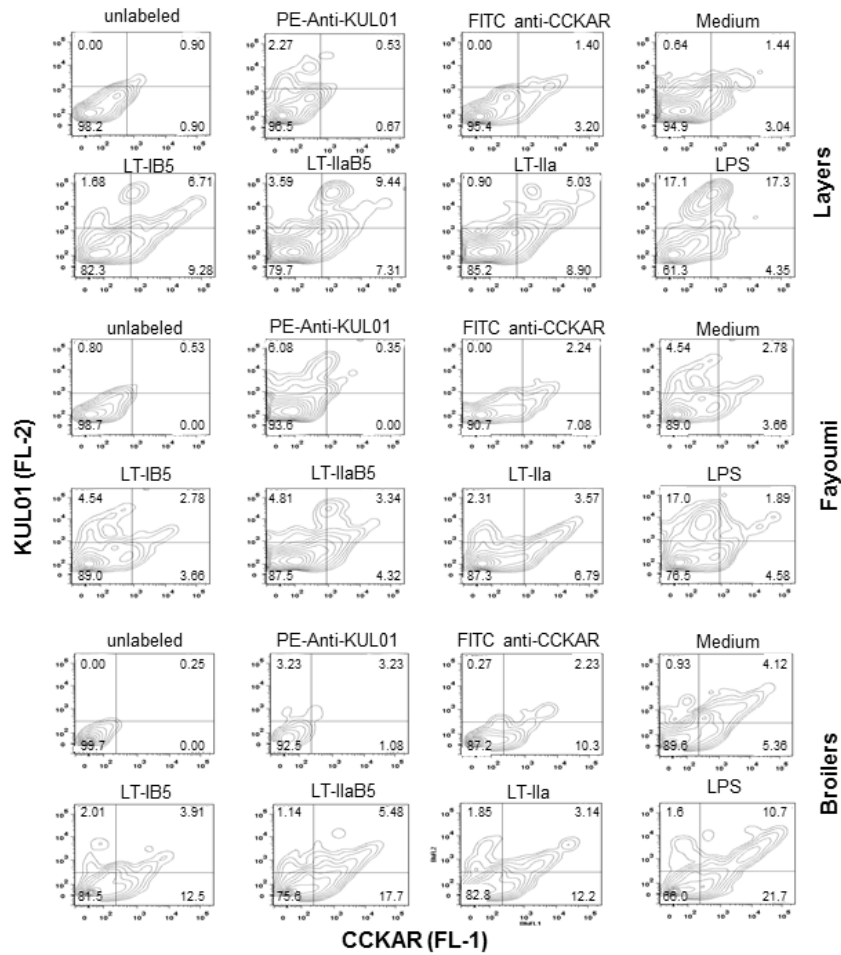


Figure 1: Flow cytometry analysis of chicken PBMC following stimulation with toxins. PBMC were isolated as stated in the Materials and Methods, and analyzed by flow cytometry after culture for 24 hrs. The position and nature of the cells in the FSC/SCC was based on published data [45]. Labelling was performed with anti-CCKAR and anti-KUL01 antibodies. Dead cells were excluded by gating on cells showing high SCC/Low FSC [17].

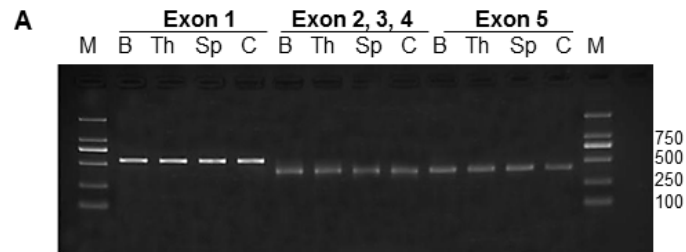


Figure 2: PCR analysis of CCKAR in various immune organs and cells. Conventional PCR was performed in 20 days old chicks from layers. RNA was extracted from different tissues from each organ and from PBMC and reverse transcribed into cDNA. CCKAR was amplified using specific primers (Table 1) and the amplicons were analyzed by gel electrophoresis. M denotes DNA molecular marker.