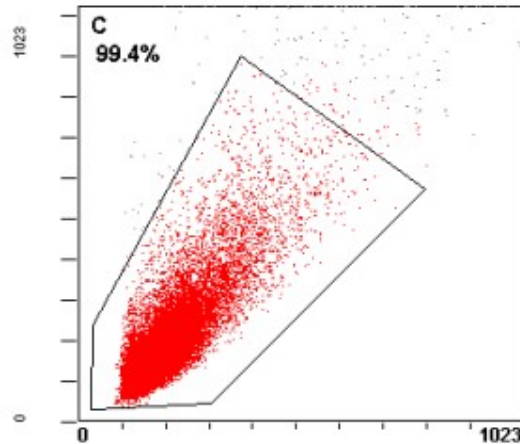


# Skeletal Site-specific Effects of Zoledronate on *in vivo* Bone Remodeling and *in vitro* BMSCs Osteogenic Activity

Xue Gong<sup>†</sup>, Wanlu Yu<sup>†</sup>, Hang Zhao, Jiansheng Su<sup>\*</sup>, Qing Sheng

## Supplementary FACS data

### Ilium BMSCs:



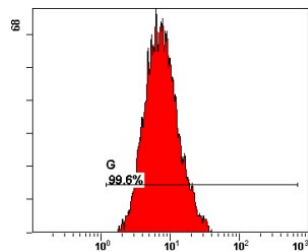
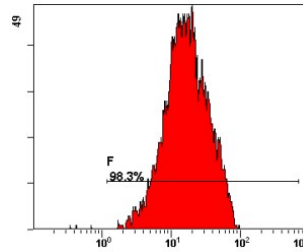
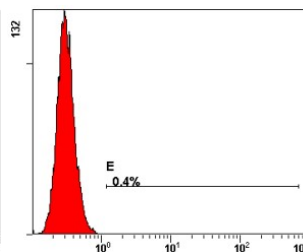
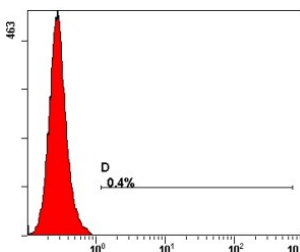
Region	Number	%Total	%Gated	X-Mean	Y-Mean
ALL	34764	100.00	100.00	193	183
C	34570	99.44	99.44	191	179

CD45

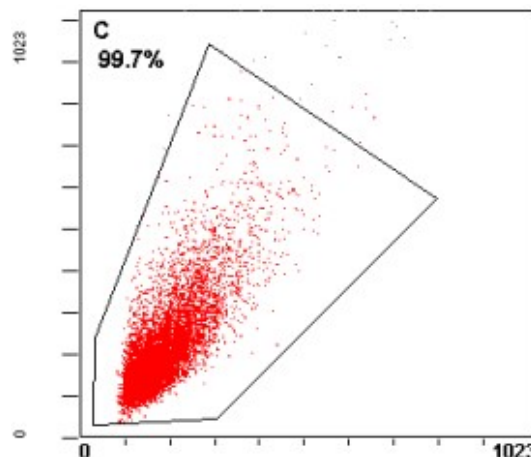
CD34

CD44

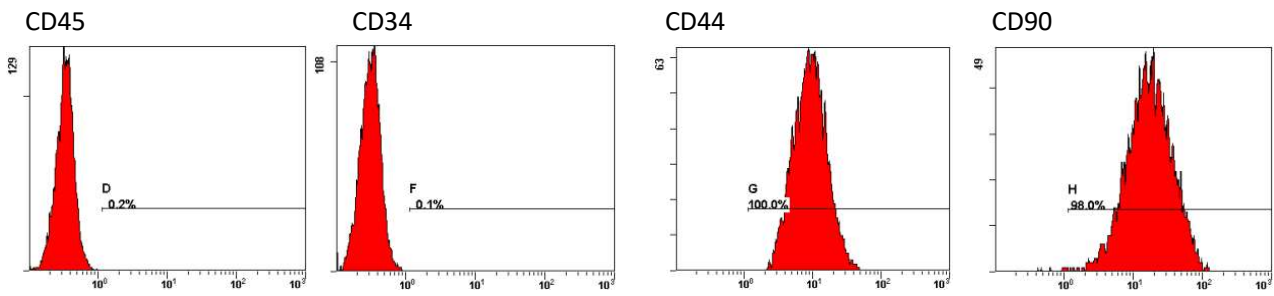
CD90



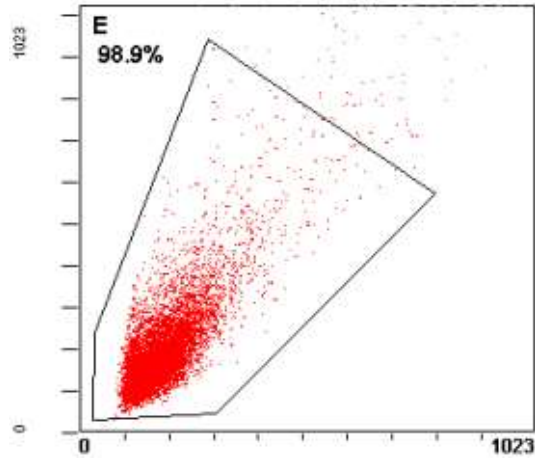
### Jaw BMSCs:



Region	Number	%Total	%Gated	X-Mean	Y-Mean
ALL	10137	100.00	100.00	181	208
C	10102	99.65	99.65	180	206



**Tibia BMSCs:**



Region	Number	%Total	%Gated	X-Mean	Y-Mean
ALL	10144	100.00	100.00	185	197
E	10031	98.89	98.89	179	188

