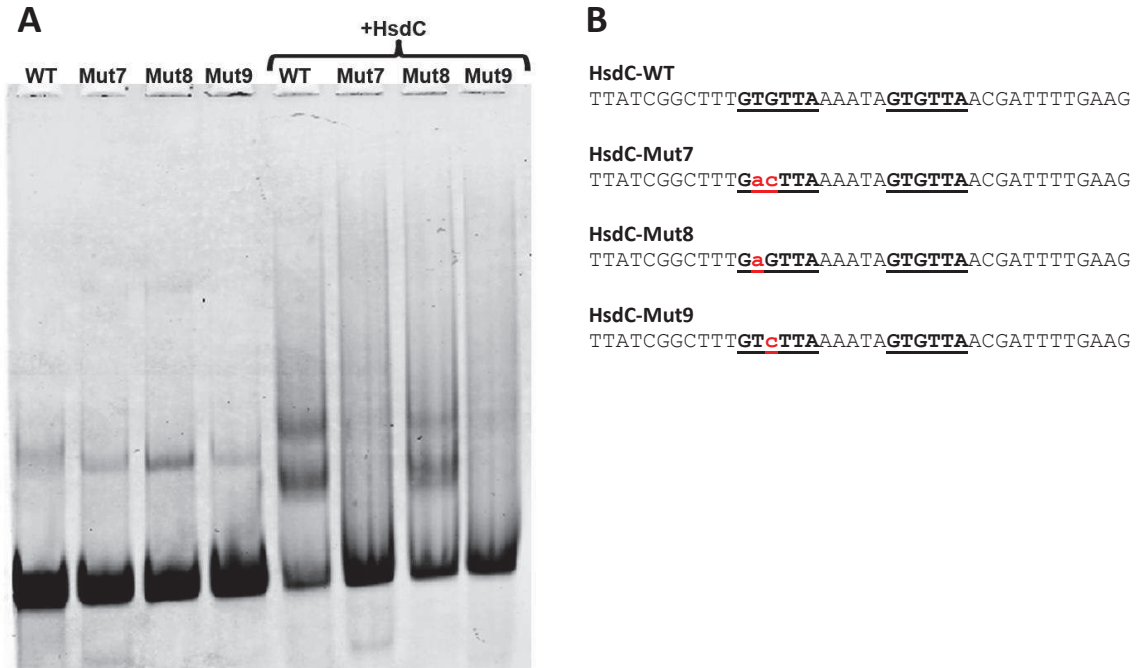


Supplementary figures



**Supplementary figure 1.** A – EMSA with mutations in a single repeat of HsdC binding site. Series of four lanes on the left represent negative control (no protein added). HsdC protein was added to the four lanes on the right, marked as **+HsdC**. B – Oligonucleotides used for EMSA. HsdC-binding repeats are underlined; mutations are shown in red and lowercase.