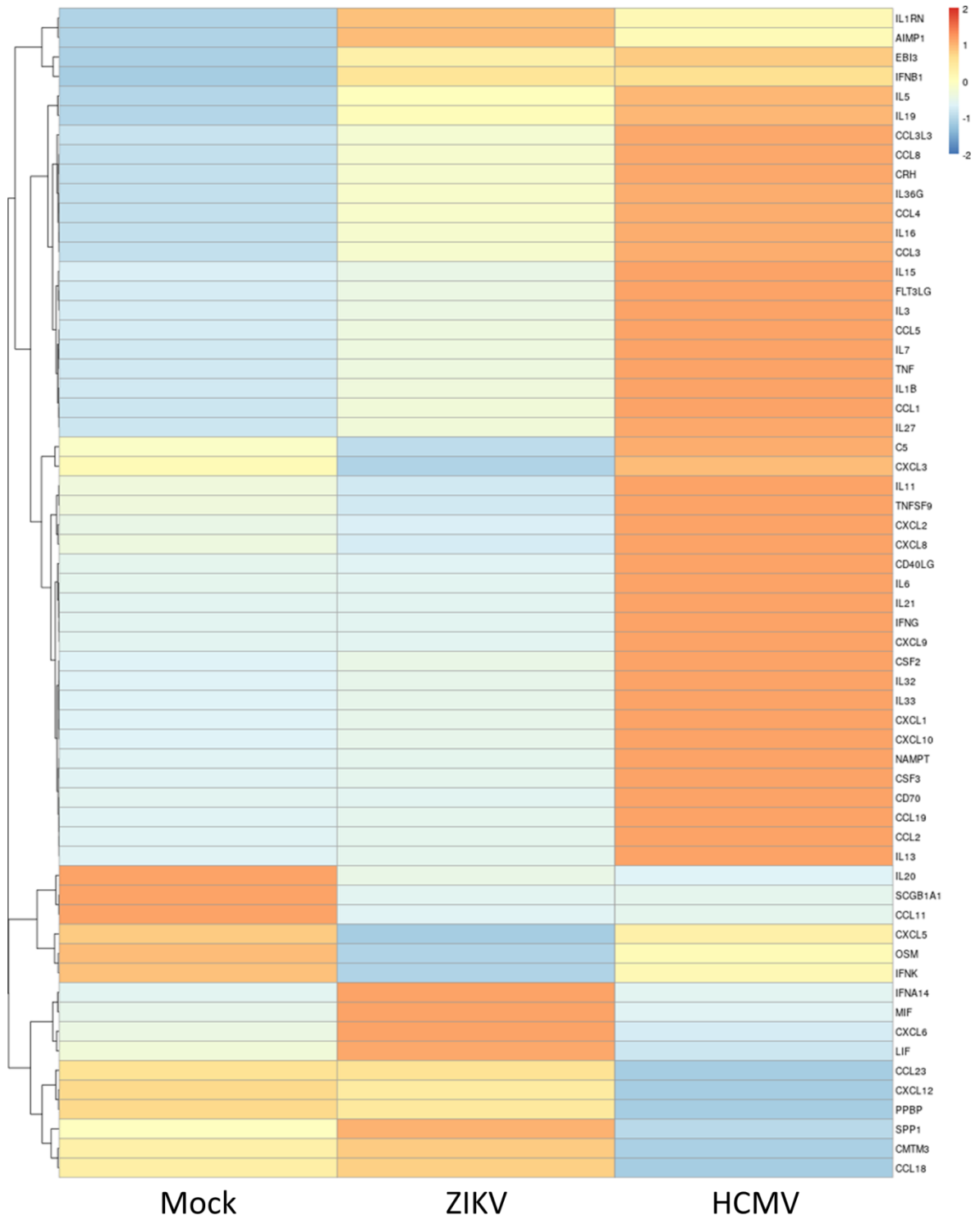
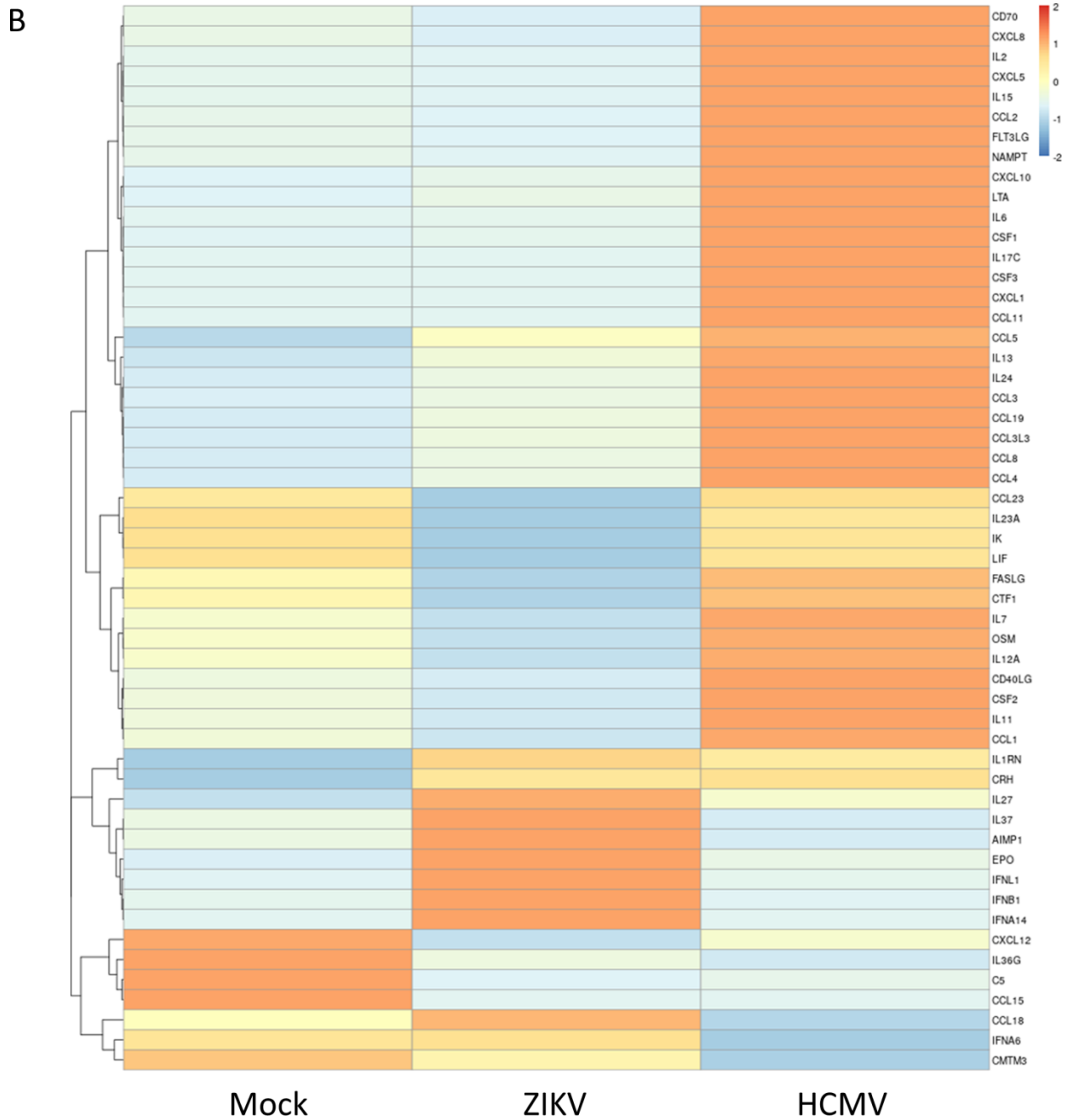


A





Supplemental Figure 1. Heatmaps representing cytokine and chemokine

expression levels. Decidual (A) and chorionic-villi organ (B) cultures were mock-

infected or infected in parallel with ZIKV or HCMV (5×10^4 PFU /well). At day 2 post

infection, RNA was extracted and subjected to transcriptome analysis. To account for

the potential donors' tissue-to-tissue variability, decidual and chorionic-villi tissues from the same donors were infected in parallel with ZIKV and HCMV. Two pools (each representing a mixture of 5 independent donor tissues) for each experimental condition were used, together representing 10 tissues from different individuals. The expression of the cytokines and chemokines with the greatest expression variability is shown. Normalized expression values were averaged across biological replicates and scaled at gene level, then hierarchically clustered and drawn as a heatmap. Blue, lower values; Red, higher values.