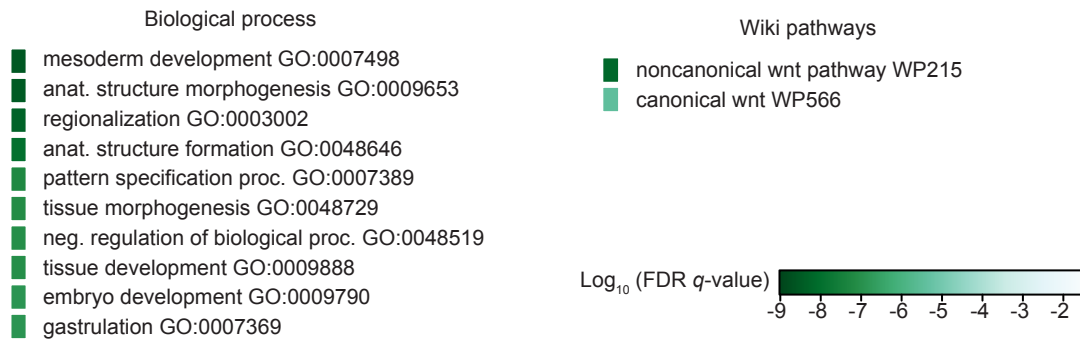


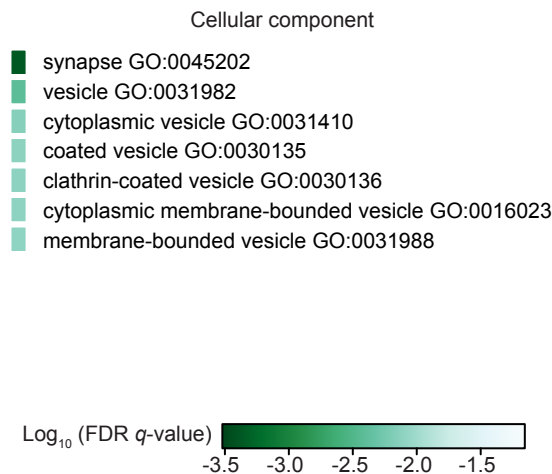
**A**

Pluripotent state



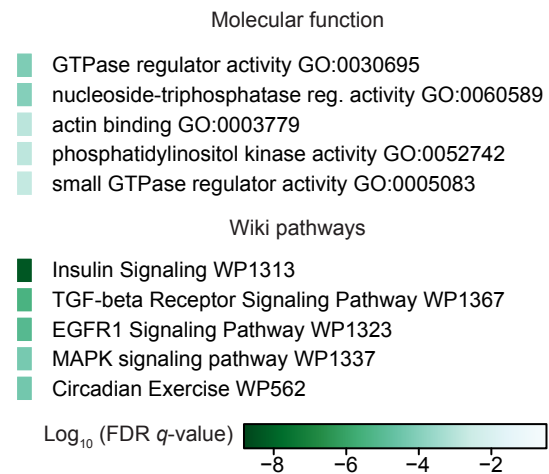
**B**

Brain



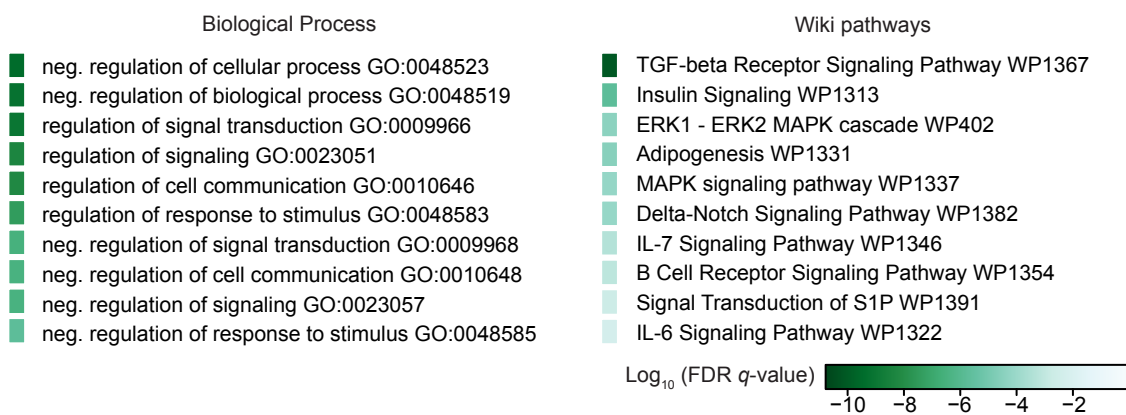
**C**

Intestine



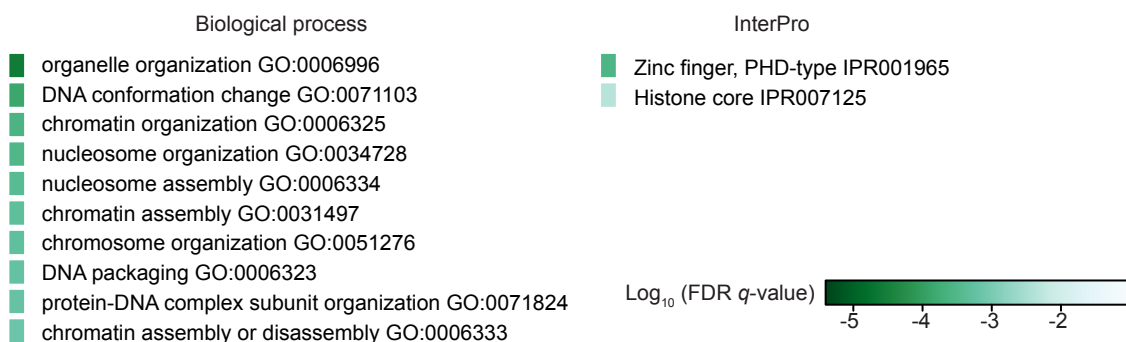
**D**

Heart



**E**

Testis



**Supplemental Figure S3.** Gene ontology (GO) annotations of zebrafish SEs. (A) Top biological process and wiki pathway GO terms enriched for pluripotent state SEs. Binomial FDR *q*-values for the GO terms are displayed on a color-scale. Only terms with *q*-values < 0.015 were considered as significantly enriched. (B) Top cellular component GO terms enriched for brain SEs. *Q*-values are as described in (A). (C) Top molecular function and wiki pathway GO terms enriched for intestine SEs. *Q*-values are as described in (A). (D) Top biological process and wiki pathway GO terms enriched for heart SEs. *Q*-values are as described in (A). (E) Top biological process and InterPro GO terms enriched for testis SEs. *Q*-values are as described in (A).