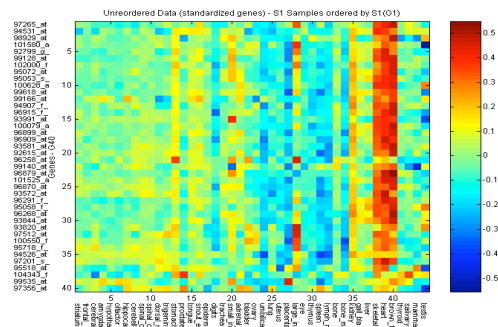


Table 2. Initial expression of normal tissue-specific genes in M1-t-p53 myeloid leukemic cells.

Skeletal muscle, heart, brown fat

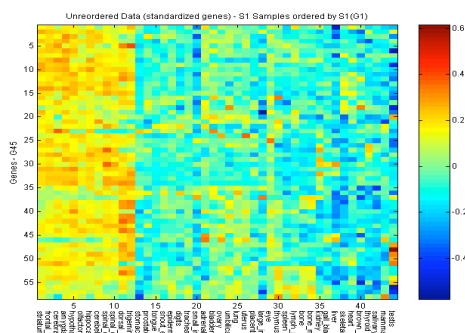
(Cluster a)
size: 40



Probeset ID	Gene symbol	Gene title	Accession no.
1	100079_at	Ndufb9	A1845556
2	100550_f_at	Cox6c	AW060422
3	100628_at	---	A1840263
4	101525_at	Ndufb10	A1848871
5	101580_at	Cox7b	A1851220
6	102000_f_at	Uqcrc2	A1842835
7	104343_f_at	Pla2g12a	A1845798
8	92615_at	---	A1853615
9	92799_g_at	Atp5c1	AA870675
10	93572_at	Ndufs1	A1835051
11	93581_at	Ndufb8	A1845121
12	93820_at	Cox7a2	AF037371
13	93844_at	1500040F11Rik	AW061302
14	93991_at	Mdh2	X07295
15	94526_at	D10Erd214e	A1848453
16	94531_at	2310005O14Rik	AW124582
17	94907_f_at	1110001J03Rik	AW045632
18	95053_s_at	Sdhb	AA674669
19	95058_f_at	2610205H19Rik	AW121984
20	95072_at	Cyc1	AW121892
21	95518_at	1810015C04Rik	AW122893
22	95718_f_at	Usmg5	AW060158
23	96258_at	Mgst3	A1843448
24	96268_at	Sucg1	A1840979
25	96291_f_at	BC059730	A1835847
26	96870_at	Aco2	A1836740
27	96879_at	Ogdh	A1852338
28	96899_at	Ndufs3	AW123802
29	96909_at	Ndufab1	A1849803
30	96915_f_at	Ndufa3	AA879764
31	97201_s_at	Ndufa5	AA823381
32	97265_at	1810013D10Rik	A1835060
33	97356_at	1810008O21Rik	A1839653
34	97512_at	2010107E04Rik	AW226650
35	98929_at	Mrps36	A1846452r
36	99128_at	Atp5o	A1849767
37	99140_at	Mrpl16	AW124920
38	99166_at	0610012G03Rik	A1845963
39	99535_at	Ccrn4l	A1845963
40	99618_at	Uqcr	A1845963

Neuronal tissues

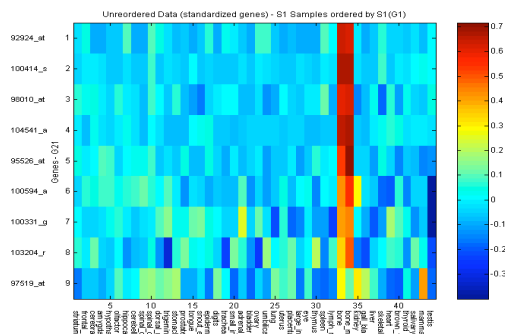
(Cluster b)
size: 58



Probeset ID	Gene symbol	Gene title	Accession no.	
1	94073_at	Polr2g	Polymerase (RNA) II (DNA directed) polypeptide G	A1836182
2	93293_at	Calmod2	Calmodulin 2	M27844
3	99191_at	Cri1	CREBBP/EP300 inhibitory protein 1	A1844939
4	97358_at	Lphn1	Latrophilin 1	A1851356
5	99179_at	Cuedc2	CUE domain containing 2	A1846233
6	93116_at	Prkacb	Protein kinase, cAMP dependent, catalytic, beta	J02626
7	96850_at	Eif4g3	Eukaryotic translation initiation factor 4 gamma, 3	A1853642
8	102009_at	Cyfp2	Cytoplasmic FMR1 interacting protein 2	A1835274
9	93043_at	Sdfr1	Stromal cell derived factor receptor 1	D50463
10	99633_at	Ncdn	Neurochondrin	AB017608
11	96852_at	Prkar1a	Protein kinase, cAMP dependent regulatory, type I, alpha	AW122197
12	95716_at	Ywhag	3-monoxygenase/tryptophan 5-monoxygenase activation protein, gamma	AW125041
13	102252_at	Pfdn2	Polypeptide prefoldin 2	Y17393
14	96299_at	---	13 days embryo forelimb cDNA, RIKEN full-length enriched library, clone:5930433F13 product:unknown EST, full insert sequence	A1847298
15	101929_at	6720463E02Rik	RIKEN cDNA 6720463E02 gene	A1836322
16	103504_at	Ssbp2	Single-stranded DNA binding protein 2	A1837107
17	98887_at	Napa	N-ethylmaleimide sensitive fusion protein attachment protein alpha	AW125607
18	93271_s_at	Gnas	GNAS (guanine nucleotide binding protein, alpha stimulating) complex locus	AJ245401
19	97484_at	Zmynd11	Zinc finger, MYND domain containing 11	A1852704
20	103032_at	Tpst1	Protein-tyrosine sulfotransferase 1	AF038008
21	96924_at	9430077D24Rik	RIKEN cDNA 9430077D24 gene	A1849719
22	96295_at	Psat1	Phosphoserine aminotransferase 1	AW122030
23	98122_at	Lmo4	LIM domain only 4	AF074600
24	100026_at	Bcat1	Branched chain aminotransferase 1, cytosolic	U42443
25	97458_at	Gnb1	Guanine nucleotide binding protein, beta 1	A1845935
26	93063_at	App	Amyloid beta (A4) precursor protein	U82624
27	96187_at	Pkp4	Plakophilin 4	A1837021
28	95340_at	Mt3	Metallothionein 3	M93310
29	95746_at	Atp6v1a1	ATPase, H+ transporting, V1 subunit A, isoform 1	AW123765
30	96948_at	Qdpr	Quinoid dihydropteridine reductase	A1845337
31	99087_at	D10ErtD749e	DNA segment, Chr 10, ERATO Doi 749, expressed	AW060179
32	93011_at	Gabarapl1	Gamma-aminobutyric acid (GABA(A)) receptor-associated protein-like 1	AW123904
33	97077_f_at	Rtn3	Reticulon 3	AW213991
34	93839_at	Rtn3	Reticulon 3	A1854888
35	97876_at	Vps29	Vacuolar protein sorting 29 (S. pombe)	A1842008
36	97857_at	Zdhhc3	Zinc finger, DHHC domain containing 3	AW047762
37	93984_at	Atpi	ATPase inhibitor	AF002718
38	101543_f_at	Tuba6	Tubulin, alpha 6	M13441
39	98759_f_at	Tuba2	Tubulin, alpha 2	M28727
40	95643_at	Wdr6	WD repeat domain 6	AW050287
41	100343_f_at	Tuba1	Tubulin, alpha 1	M28729
42	97535_at	Ywhah	Tyrosine 3-monoxygenase/tryptophan 5-monoxygenase activation protein, eta polypeptide	D87661
43	95758_at	Scd2	Stearoyl-Coenzyme A desaturase 2	M26270
44	100342_i_at	Tuba1	Tubulin, alpha 1	M28729
45	93747_at	AW742319	Expressed sequence AW742319	AW122599
46	93496_at	Elovl5	ELOVL family member 5, elongation of long chain fatty acids (yeast)	A1852098
47	95282_at	Hspca	Heat shock protein 1, alpha	J04633
48	103364_f_at	5730494M16Rik	RIKEN cDNA 5730494M16 gene	AW04525
49	98953_at	1500010M16Rik	RIKEN cDNA 1500010M16 gene	AW048032
50	100539_at	Bach	Brain acyl-CoA hydrolase	A1841279
51	97339_at	---	Similar to G protein-coupled receptor kinase-interactor 1; G protein-coupled receptor (LOC216963), mRNA kinase-associated ADP ribosylation factor GTPase-activating protein (GIT1)	A1841159
52	94789_r_at	Tubb5	Tubulin, beta 5	X04663
53	94788_f_at	Tubb5	Tubulin, beta 5	X04663
54	97909_at	Stmn1	Stathmin 1	A1838080
55	93768_f_at	2700059D21Rik	RIKEN cDNA 2700059D21 gene	AW124052
56	103611_at	Cd47	CD47 antigen (Rh-related antigen, integrin-associated signal transducer)	AB012693
57	95020_at	Cd47	CD47 antigen (Rh-related antigen, integrin-associated signal transducer)	A1848868
58	96104_at	3732413I11Rik	RIKEN cDNA 3732413I11 gene	A1047107

Bone_bone marrow

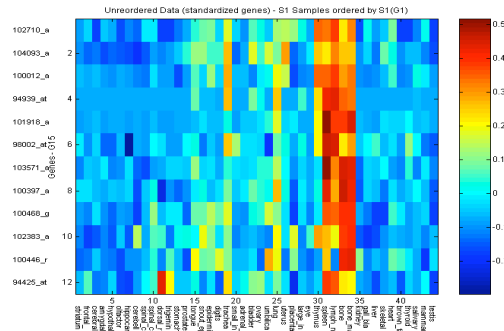
(Cluster c1)
size: 9



Probeset ID	Gene symbol	Gene title	Accession no.	
1	100331_g_at	Prdx2	Peroxioredoxin 2	AF032714
2	100414_s_at	Mpo	Myeloperoxidase	X15313
3	100594_at	Pigq	Phosphatidylinositol glycan, class Q	AB008895
4	103204_r_at	4432406C08Rik	RIKEN cDNA 4432406C08 gene	AW259499
5	104541_at	Prtn3	Proteinase 3	U43525
6	92924_at	Ctsg	Cathepsin G	X70057
7	95526_at	Xpo7	Exportin 7	A1606243
8	97519_at	Spp1	Secreted phosphoprotein 1	X13986
9	98010_at	Nfe2	Nuclear factor, erythroid derived 2	L09600

Bone marrow, bone, lymph node
spleen, thymus

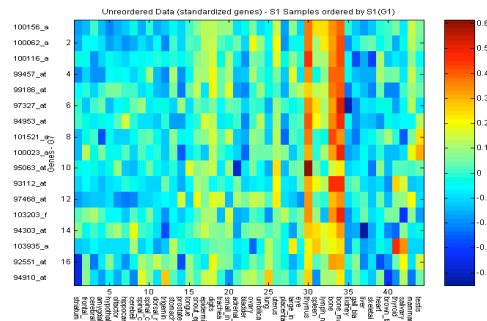
(Cluster c2)
size: 12



Probeset ID	Gene symbol	Gene title	Accession no.	
1	100012_at	Laptm5	Lysosomal-associated protein transmembrane 5	U29539
2	100397_at	Tyrobp	TYRO protein tyrosine kinase binding protein	AF024637
3	100446_r_at	Sprr1b	Small proline-rich protein 1B	X91825
4	100468_g_at	Lyl1	Lymphoblastomic leukemia	X57687
5	101918_at	Tgfb1	Transforming growth factor, beta 1	AJ009862
6	102383_at	5730593F17Rik	RIKEN cDNA 5730593F17 gene	AW048977
7	102710_at	Apb1ip	Amyloid beta (A4) precursor protein-binding, family B, member 1 interacting protein	AF020313
8	103571_at	Lst1	Leukocyte specific transcript 1	U72644
9	104093_at	Lsp1	Lymphocyte specific 1	D49691
10	94425_at	Ly86	Lymphocyte antigen 86	AB007599
11	94939_at	Cd53	CD53 antigen	X97227
12	98002_at	Icsbp1	Interferon consensus sequence binding protein 1	M32489

Bone marrow, bone, thymus

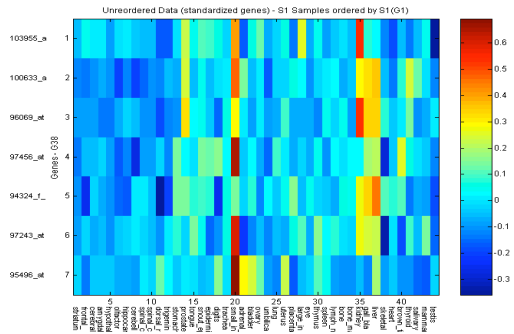
(Cluster c3)
size: 17



Probeset ID	Gene symbol	Gene title	Accession no.	
1	100023_at	Myb12	Myeloblastosis oncogene-like 2	X70472
2	100062_at	Mcm3	Minichromosome maintenance deficient 3 (S. cerevisiae)	X62154
3	100116_at	2810417H13Rik	RIKEN cDNA 2810417H13 gene	A1122538
4	100156_at	Mcm5	Minichromosome maintenance deficient 5, cell division cycle 46 (S. cerevisiae)	D26090
5	101521_at	Birc5	Baculoviral IAP repeat-containing 5	AB013819
6	103203_f_at	4432406C08Rik	RIKEN cDNA 4432406C08 gene	AW259499
7	103935_at	Atp2a3	ATPase, Ca++ transporting, ubiquitous	A1504474
8	92551_at	Lig1	Ligase I, DNA, ATP-dependent	U19604
9	93112_at	Mcm2	Minichromosome maintenance deficient 2 mitotin (S. cerevisiae)	D86725
10	94303_at	Hnrpd	Heterogeneous nuclear ribonucleoprotein D	U11274
11	94910_at	Nde1	Nuclear distribution gene E homolog 1 (A nidulans)	AW120739
12	94953_at	Racgap1	Rac GTPase-activating protein 1	AW122347
13	95063_at	Cdca7	Cell division cycle associated 7	A1606257
14	97327_at	Fen1	Flap structure specific endonuclease 1	L26320
15	97468_at	Cks1	CDC28 protein kinase 1	AB025409
16	99186_at	Ccna2	Cyclin A2	Cyclin A2

Liver, gall bladder, kidney

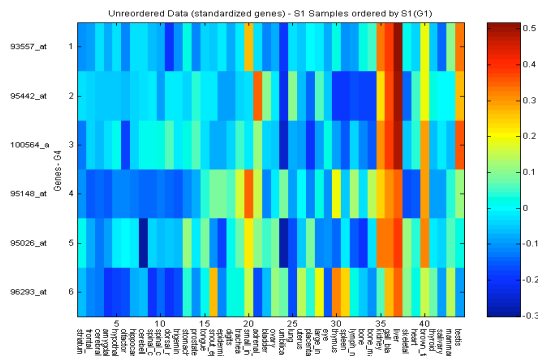
(Cluster d1)
size: 7



Probeset ID	Gene symbol	Gene title	Accession no.
1 100633_at	2810484M10Rik	RIKEN cDNA 2810484M10 gene	AW124268
2 103955_at	Cry11	Crystallin, lamda 1	AW050325
3 94324_f_at	Hmgcl	3-hydroxy-3-methylglutaryl-Coenzyme A lyase	U49878
4 95496_at	5730409F23Rik	RIKEN cDNA 5730409F23 gene	AI848866
5 96069_at	Akr7a5	Aldo-keto reductase family 7, member A5 (aflatoxin aldehyde reductase)	AI840094
6 97243_at	Slc9a3r1	Solute carrier family 9 (sodium/hydrogen exchanger), isoform 3 regulator 1	U74079
7 97456_at	Acsl5	Acyl-CoA synthetase long-chain family member 5	AI838021

Liver, gall bladder, kidney

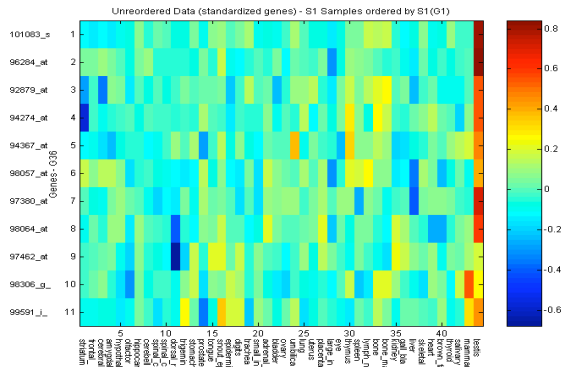
(Cluster d2)
size: 6



Probeset ID	Gene symbol	Gene title	Accession no.
1 100564_at	Ddt	D-dopachrome tautomerase	AF068199
2 93557_at	Sephs2	Selenophosphate synthetase 2	U43285
3 95026_at	0610039N19Rik	RIKEN cDNA 0610039N19 gene	AW047688
4 95148_at	Ak2	Adenylate kinase 2	AB020202
5 95442_at	MGC18837	Hypothetical protein MGC18837	AI835706
6 96293_at	2410015N17Rik	RIKEN cDNA 2410015N17 gene	AI842600

Testis

(Cluster e)
size: 11



	Probeset ID	Gene symbol	Gene title	Accession no.
1	101083_s_at	Lsm2	LSM2 homolog, U6 small nuclear RNA associated (S. cerevisiae)	AF109905
2	92879_at	Ppm1g	Protein phosphatase 1G (formerly 2C), magnesium-dependent, gamma isoform	U42383
3	94274_at	Ube2s	Ubiquitin-conjugating enzyme E2S	A1837415
4	94367_at	AA407809	Expressed sequence AA407809	A1850362
5	96284_at	Csnk1g2	Casein kinase 1, gamma 2	AW121446
6	97380_at	1700016A15Rik	RIKEN cDNA 1700016A15 gene	A1197431
7	97462_at	3110006P09Rik	RIKEN cDNA 3110006P09 gene	A1847584
8	98057_at	1110031E24Rik	RIKEN cDNA 1110031E24 gene	AW121162
9	98064_at	Aamp	Angio-associated migratory protein	AW125378
10	98306_g_at	Foxm1	Forkhead box M1	Y11245
11	99591_j_at	Rdh11	Retinol dehydrogenase 11	AB030505