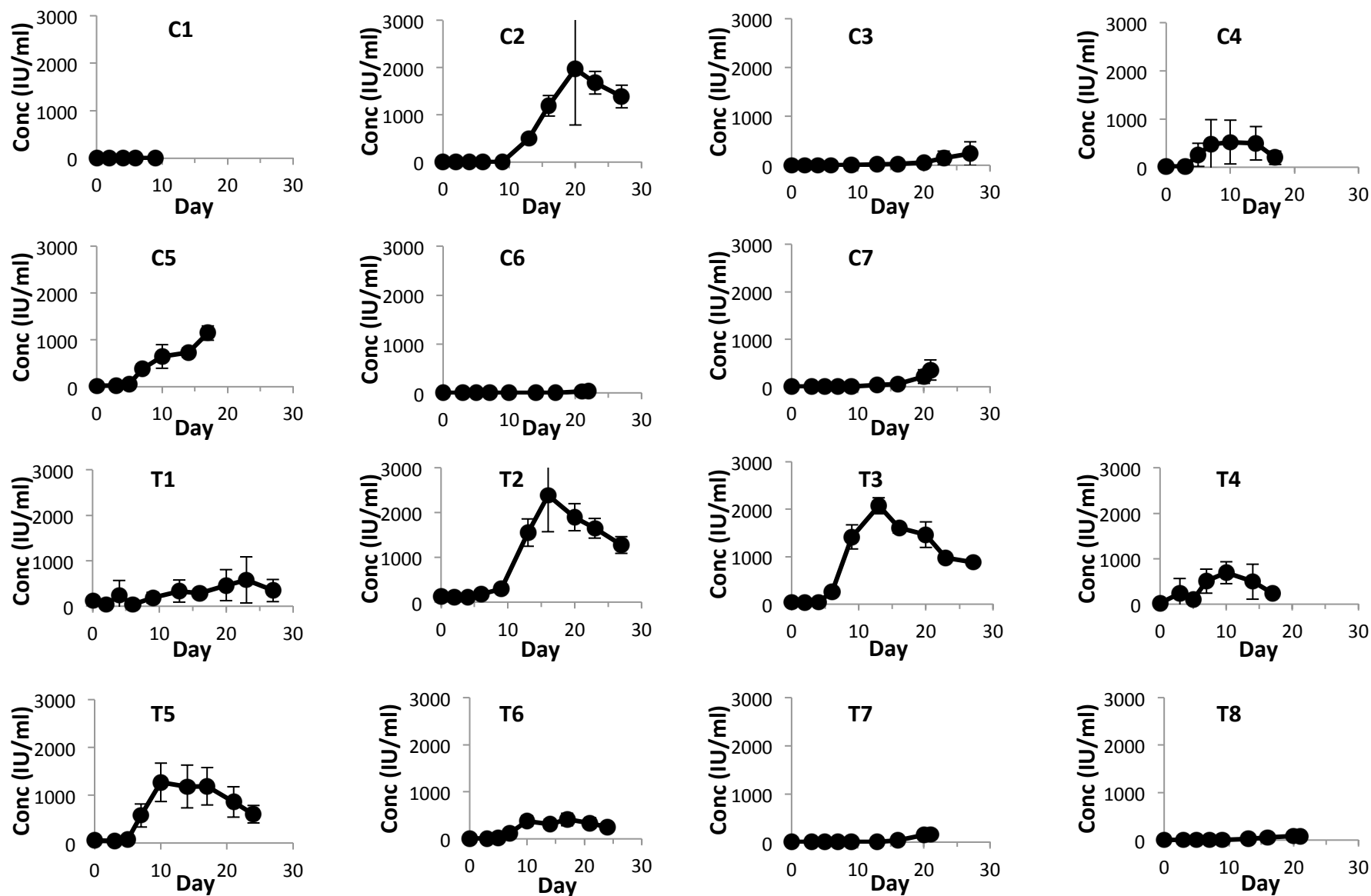


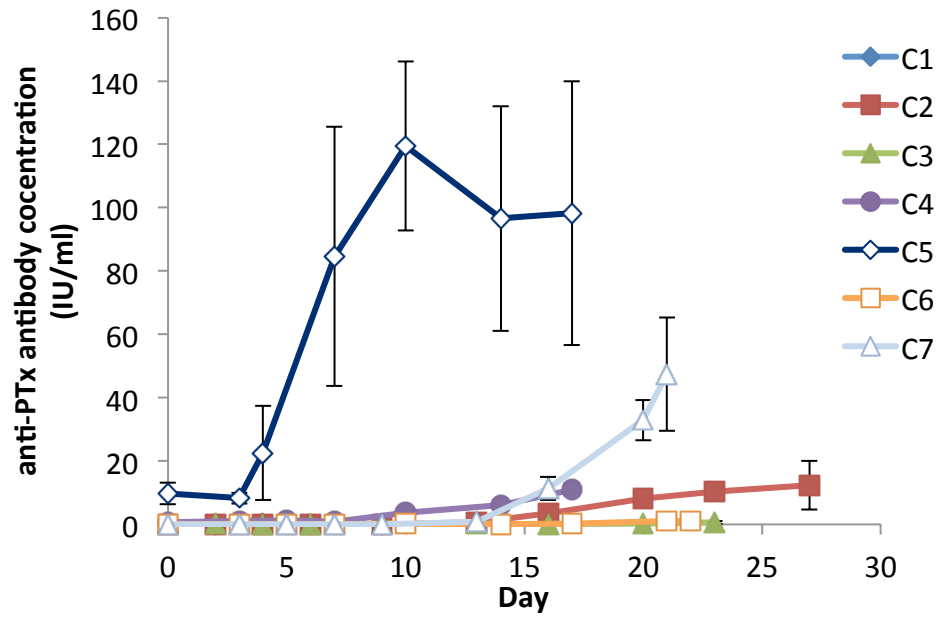
Supplementary Table 1. Details of WBC, colonization, and ELISA tests for each baboon.

Baboon	Active <i>B. br</i> infection	Day 0	Day 2/3		Day 9/10			response to pertussis infection
		anti-Fha titer (IU/ml)	WBC ( $\times 1000/\mu\text{l}$ )	CFU/ml	anti-Fha titer (IU/ml)	anti- Bp LOS titer (raw abs)	anti-PTx titer (IU/ml)	
Sigma	n/a	90 $\pm$ 12	n/a	n/a	n/a	n/a	n/a	n/a
C1	-	3 $\pm$ 1	18.41	8.0 $\times 10^7$	3 $\pm$ 2	0.06 $\pm$ 0.01	0.03 $\pm$ 0.02	typical
C2	yes	3.4 $\pm$ 0.5	19.26	3.5 $\times 10^7$	3.1 $\pm$ 0.5	0.08 $\pm$ 0.01	0.02 $\pm$ 0.01	excluded
C3	yes	0.54 $\pm$ 0.09	5.11	1.8 $\times 10^7$	1.7 $\pm$ 0.8	0.09 $\pm$ 0.01	0.3 $\pm$ 0.3	excluded
C4	yes*	14 $\pm$ 6	12.61	1.0 $\times 10^3$	518 $\pm$ 456	0.41 $\pm$ 0.02	4 $\pm$ 2	excluded
C5	-	20 $\pm$ 2	6.65	5	647 $\pm$ 254	0.39 $\pm$ 0.01	119 $\pm$ 27	atypical
C6	-	0 $\pm$ 0	33.58	3.0 $\times 10^7$	0.7 $\pm$ 0.2	0.06 $\pm$ 0.01	0.16 $\pm$ 0.04	typical
C7	-	0.6 $\pm$ 0.3	27.56	1.8 $\times 10^7$	1.1 $\pm$ 0.6	0.06 $\pm$ 0.01	0.01 $\pm$ 0.01	typical
T1	-	119 $\pm$ 36	7.96	6.5 $\times 10^4$	185 $\pm$ 117	0.22 $\pm$ 0.04	nd	atypical
T2	-	135 $\pm$ 37	6.85	3.0 $\times 10^4$	301 $\pm$ 41	0.40 $\pm$ 0.08	nd	atypical
T3	-	39 $\pm$ 2	6.33	1.0 $\times 10^4$	1416 $\pm$ 254	0.54 $\pm$ 0.02	nd	atypical
T4	-	22 $\pm$ 10	8.36	6.0 $\times 10^3$	690 $\pm$ 239	0.38 $\pm$ 0.04	nd	atypical
T5	yes	52 $\pm$ 16	28.38	1.5 $\times 10^3$	1269 $\pm$ 406	0.27 $\pm$ 0.07	nd	excluded
T6	-	5 $\pm$ 2	23.03	1.7 $\times 10^4$	378 $\pm$ 113	0.21 $\pm$ 0.04	nd	atypical
T7	-	0.8 $\pm$ 0.3	30.31	3.8 $\times 10^7$	1.2 $\pm$ 0.4	0.07 $\pm$ 0.01	nd	typical
T8	-	0.2 $\pm$ 0.1	14.24	1.3 $\times 10^8$	5 $\pm$ 2	0.09 $\pm$ 0.02	nd	typical

*B. br* = *B. bronchiseptica*; - = no evidence of *B. br*; n/a = not applicable; \* = *B. br* confirmed by standard microbiological procedures; nd = no data



**Supplementary Figure 1. Anti-Fha antibody titer as measured by ELISA.** Baboon serum samples were analyzed on the day indicated in duplicate with 8 x 5-fold dilutions. Each plate contained a control antibody or serum that had been normalized relative to the WHO 06/142 reference serum. Fits of the serum data were compared to the control to determine anti-Fha antibody concentrations in IU/ml.



**Supplementary Figure 2. Anti-PTx antibody titer as measured by ELISA.** Baboon serum samples were analyzed on the day indicated in duplicate with 8 x 5-fold dilutions. Each plate contained a control antibody that had been normalized relative to the WHO 06/142 reference serum. Fits of the serum data were compared to the control to determine anti-PTx antibody concentrations in IU/ml.