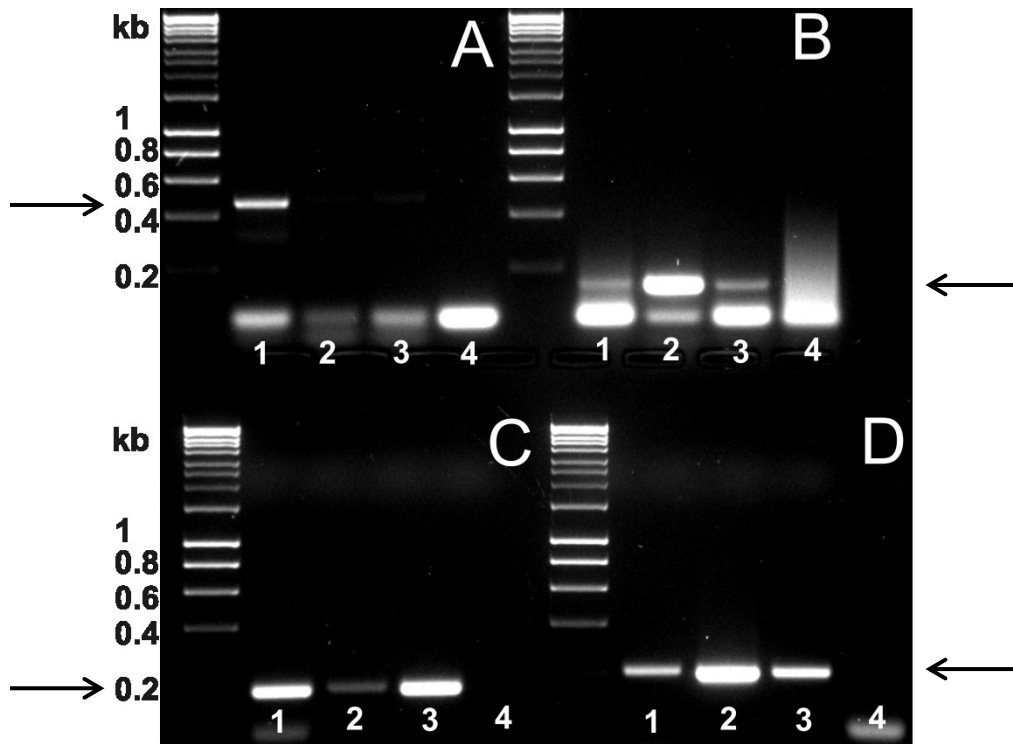


1 **Supplementary figure S4: RT-PCR confirming transcripts of SmILK, SmPINCH, and SmNck2 in**  
2 **isolated gonads of *S. mansoni*.**

3



4

5 **Suppl. Fig. S4**

6 Organ RNA-specific RT-PCRs analyses [1] confirmed the transcription of SmILK (B),  
7 SmPINCH (C), and SmNck2 (D) in the ovary (lanes 2) or the testis (lanes 3). Lanes 1 contain  
8 cDNA of *S. mansoni* couples as positive controls, and lanes 4 represent RT<sup>-</sup> negative controls.  
9 In each case amplicons of the expected sizes were obtained (see arrows). For biological  
10 control part of NPP-5 was amplified (A), a nucleotide pyrophosphatase/ phosphodiesterase  
11 shown before to be predominantly expressed in the tegument and at lower levels in internal  
12 tissues [2] but not in the gonads [1]. In this case, amplicons were exclusively obtained with  
13 cDNA of couples (lane 1). Parts of SmILK (B), SmPINCH (C) and SmNck2 (D) were amplified  
14 and shown to be present in the gonads (lanes 2, 3). In each case (A-D), no amplification  
15 products were obtained in the negative controls (lanes 4). Marker, Hyperladder I (Bioline).

16

17 **References**

- 18 1. Hahnel S, Lu Z, Wilson RA, Grevelding CG, Quack T. Whole-organ isolation approach as a  
19 basis for tissue-specific analyses in *Schistosoma mansoni*. PLoS Negl. Trop. Dis. 2013;7(7):  
20 e2336.
- 21
- 22 2. Rofatto HK, Tararam CA, Borges WC, Wilson RA, Leite LCC, Farias LP. Characterization of  
23 phosphodiesterase-5 as a surface protein in the tegument of *Schistosoma mansoni*. Mol  
24 Biochem Parasitol. 2009;166: 32-41.
- 25