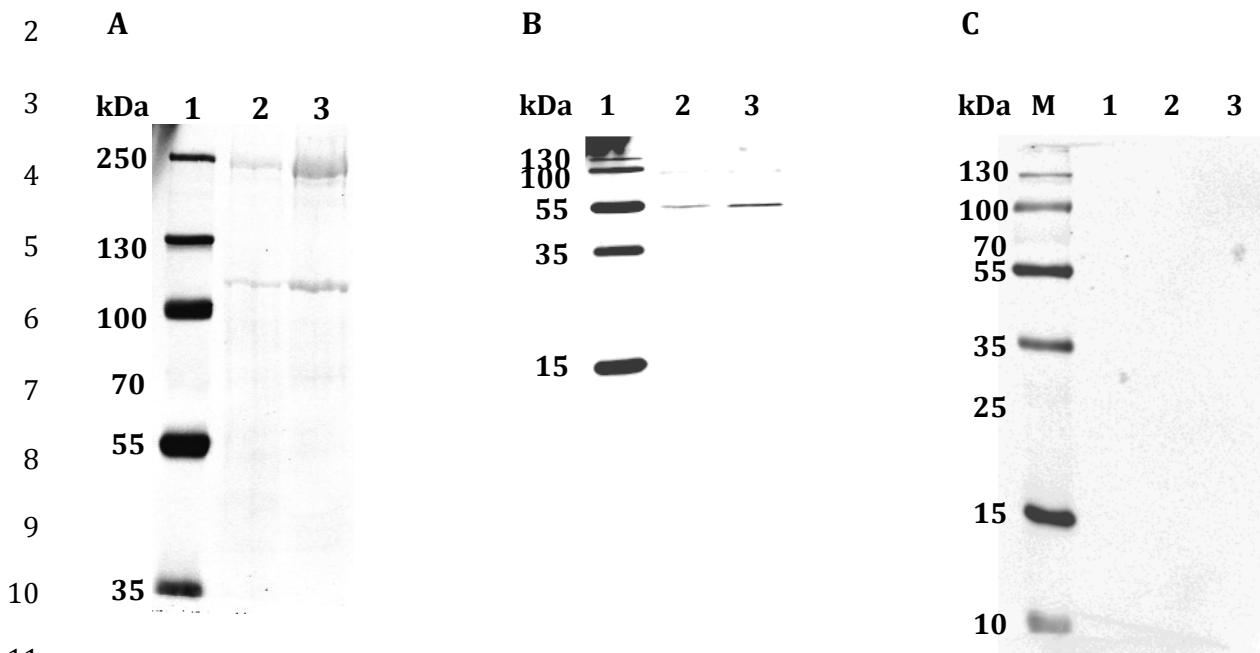


1 **Supplementary figure S6: Western blot analyses to test the specificity of antibodies**



11

12

13 **Suppl. Fig. S6**

14 Western blot analyses were performed to test commercial antibodies against laminin (A),  
15 tubulin (B), or the secondary antibody (C). Protein lysates of female (lanes 2) or male (lanes  
16 3) adult worms were size-separated by SDS-PAGE (A, 7.5%; B, 15%; C, 12%). All antibodies  
17 were used in concentrations of 1 : 5,000. Bands of expected sizes were obtained that  
18 represent orthologs of laminin (A) or  $\beta$ -tubulin (B), which according to GeneDB  
19 (<http://www.genedb.org>) are expressed in *S. mansoni* adults and have appropriate sizes  
20 (laminins: Smp\_148790, Smp\_163810;  $\beta$ -tubulins: Smp\_078040, Smp\_030730). As expected,  
21 the secondary antibody showed no cross-reaction against *S. mansoni* protein. Lane 1, protein  
22 size marker (Thermo Scientific; PageRuler Plus).

23