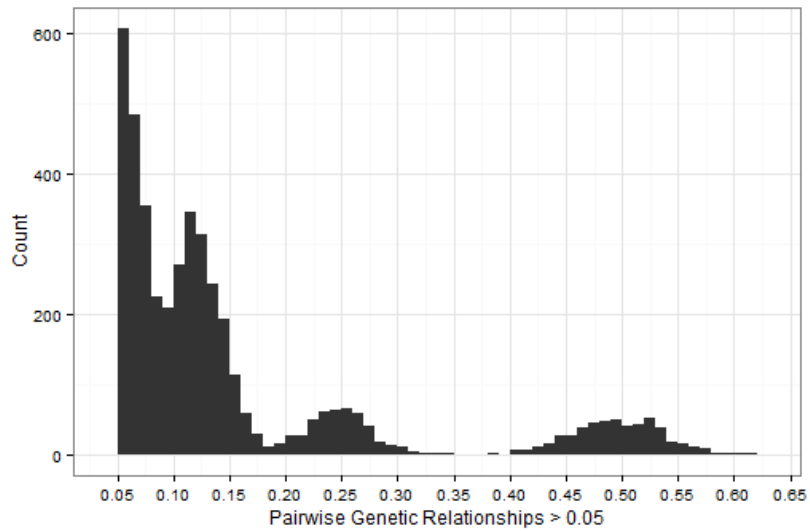
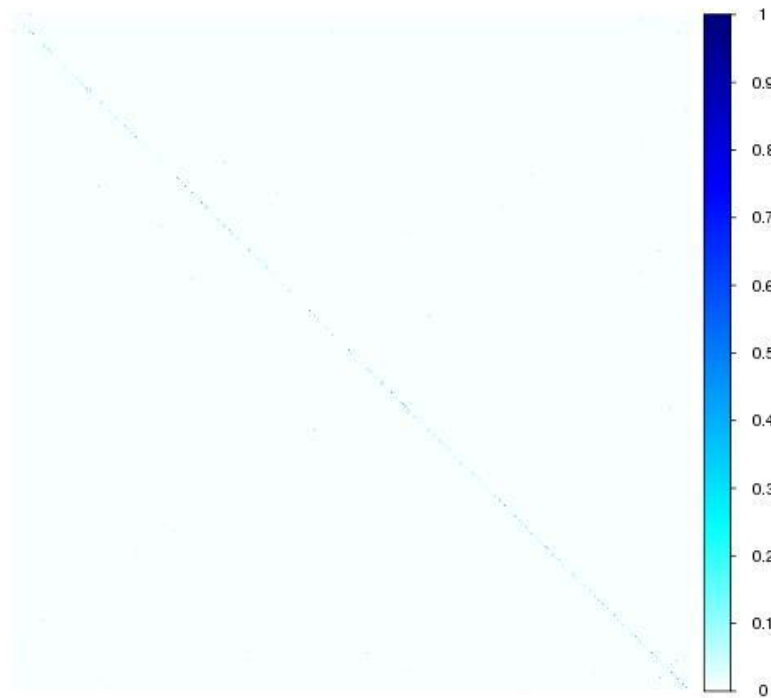


**A**



**B**



**Figure S7. Pairwise genetic relationships. (A)** Histogram representing 4,425 pairwise genetic relationships > 0.05 from 2,937 individuals that are represented in our variance component of close relatives used for calculating total narrow-sense heritability,  $h^2$ . **(B)** Genetic correlation matrix of all pairwise relationships. Diagonal correlations with oneself are set to missing to better visualize clustering of a large amount of small independent nuclear families.