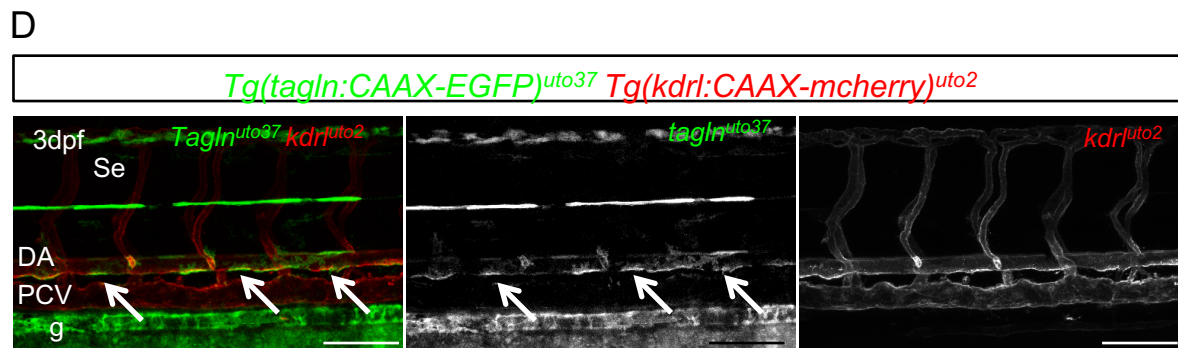
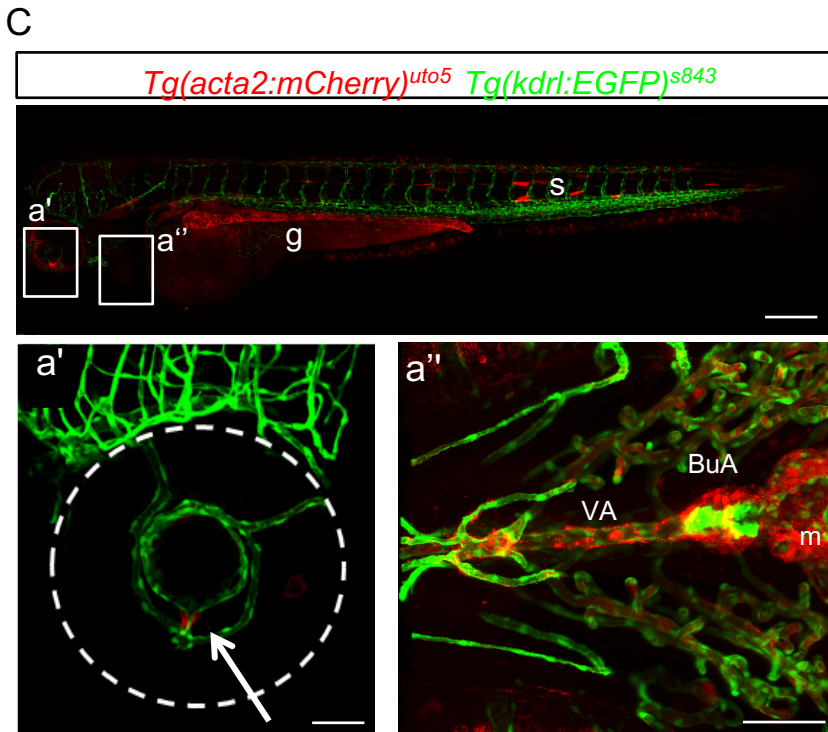
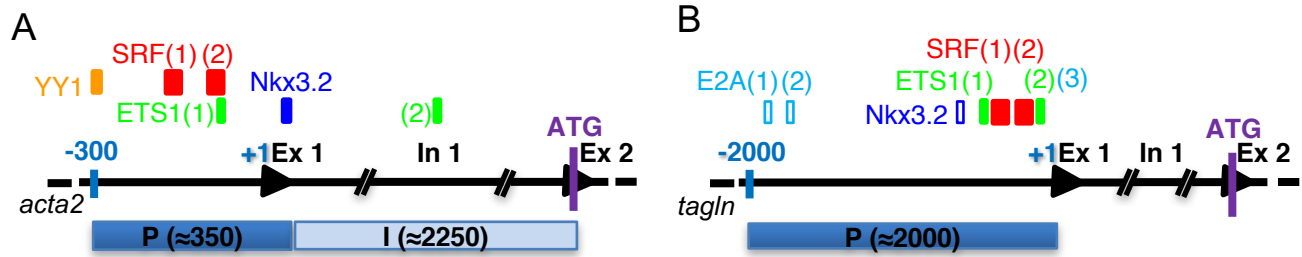


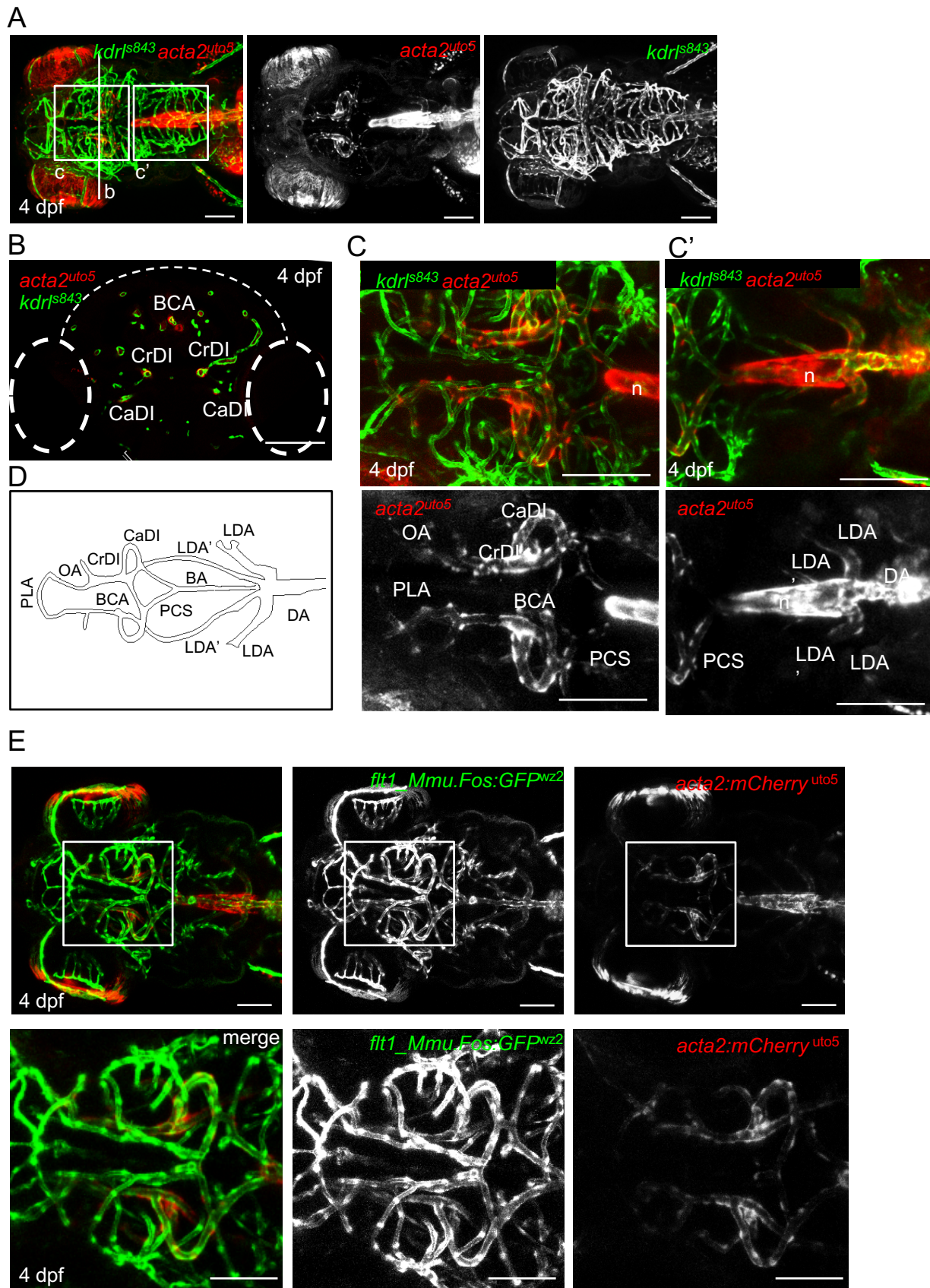
Cell Reports, Volume 18

Supplemental Information

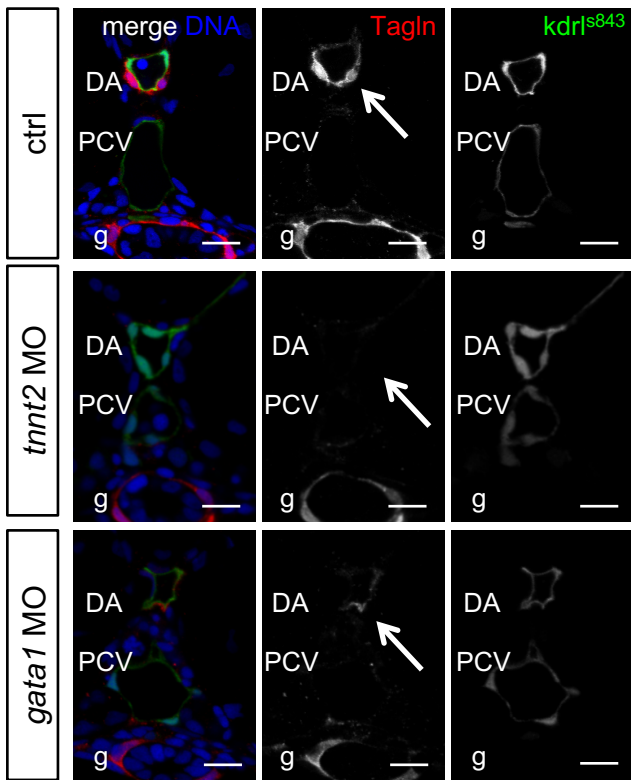
**Cilia Control Vascular Mural Cell Recruitment
in Vertebrates**

Xiaowen Chen, Dafne Gays, Carlo Milia, and Massimo M. Santoro

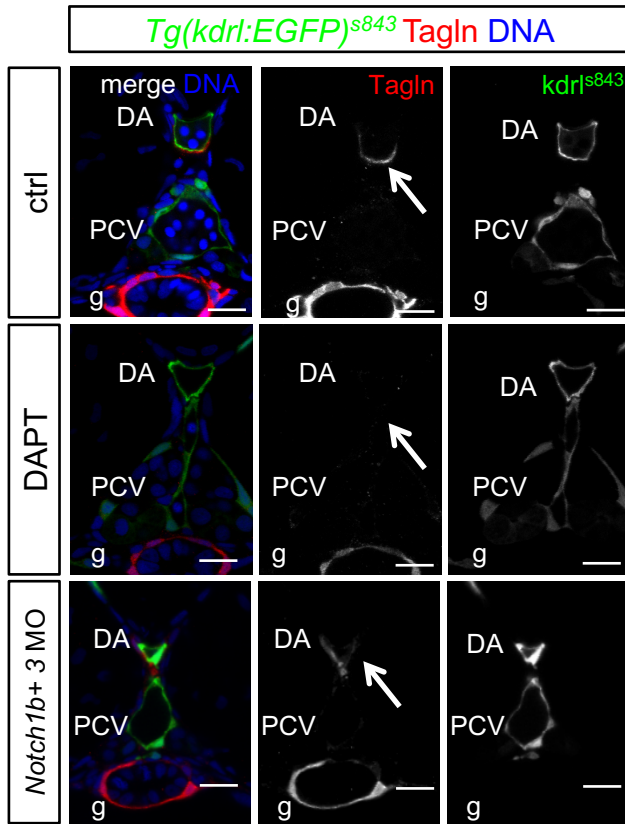




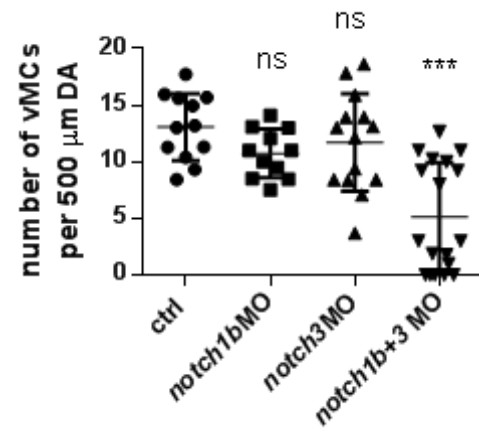
A



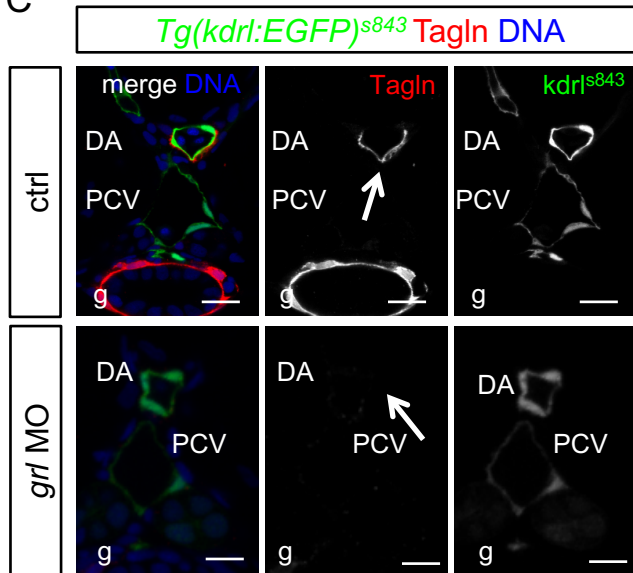
A



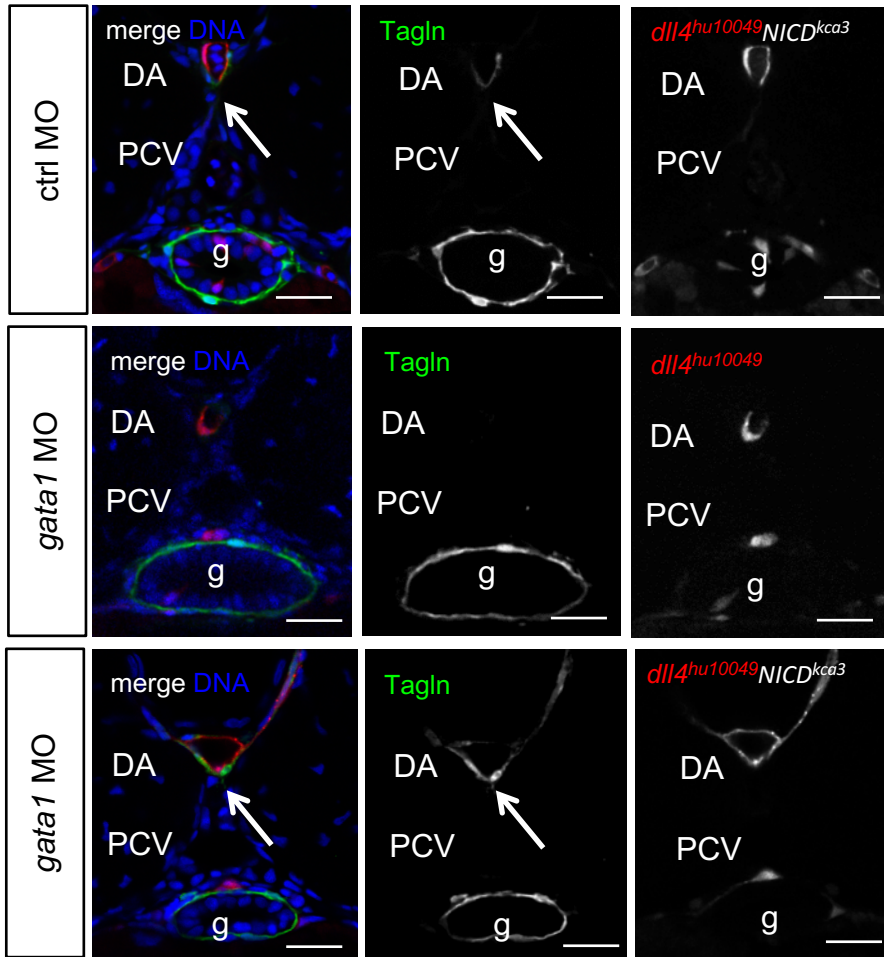
B



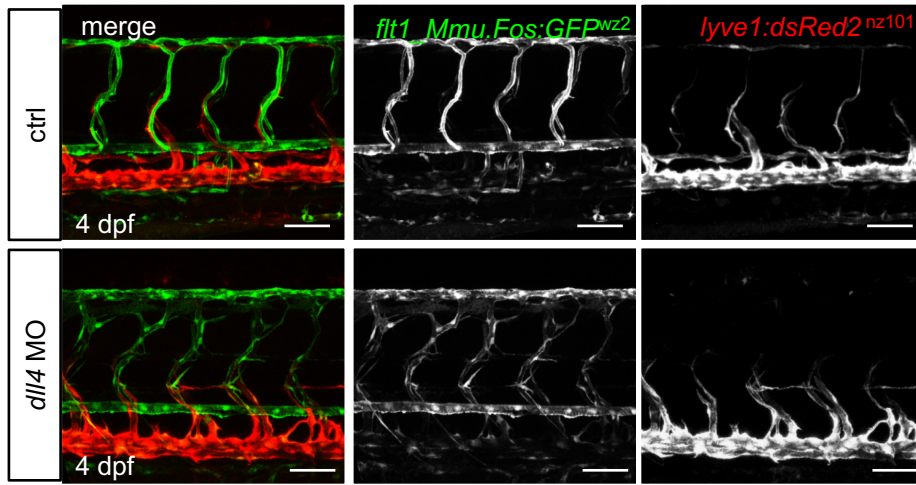
C



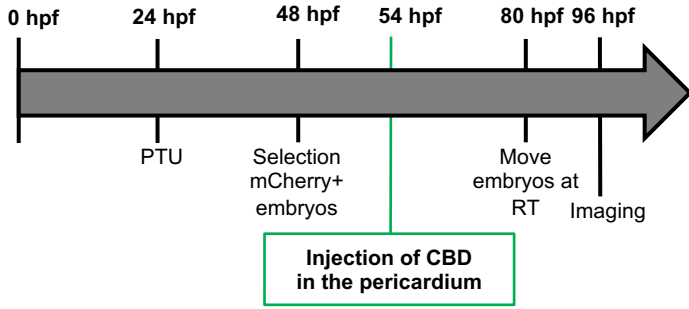
A



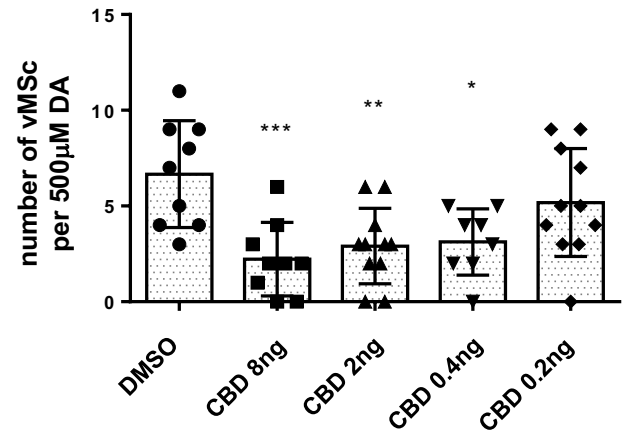
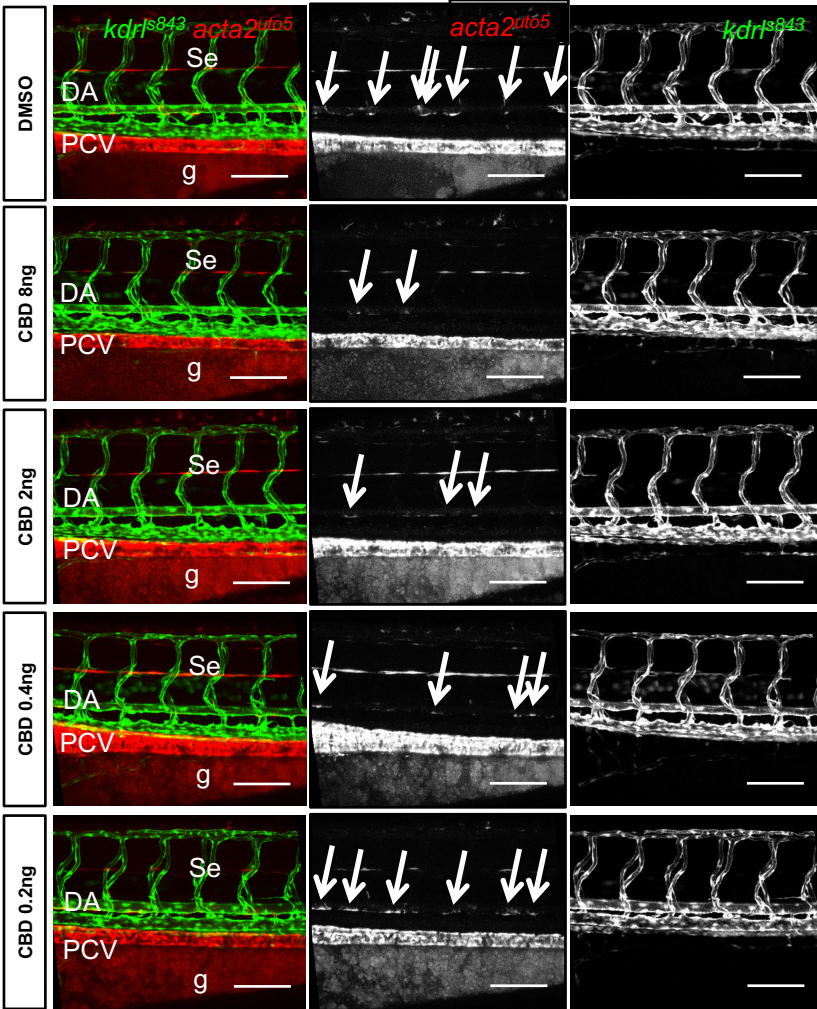
A



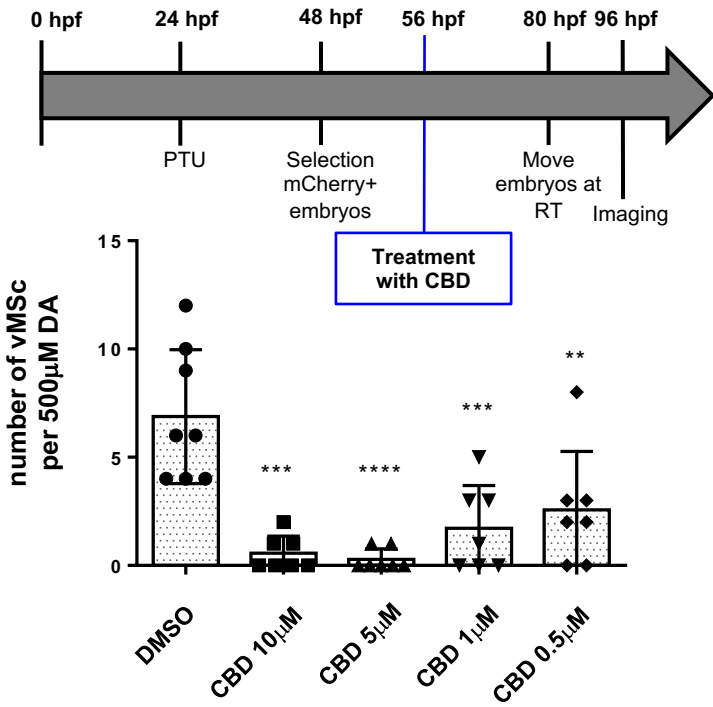
A



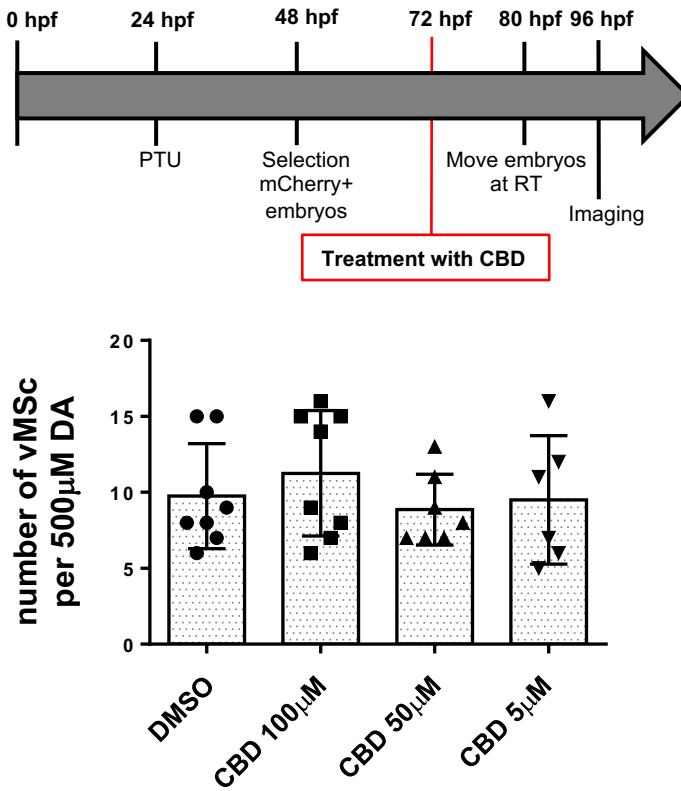
B



A



B

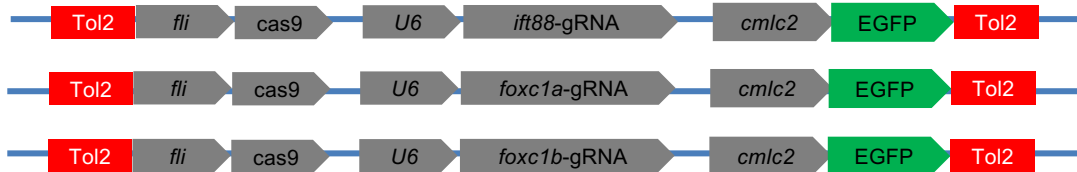


A

gRNA target sequences (red indicates NGG region)

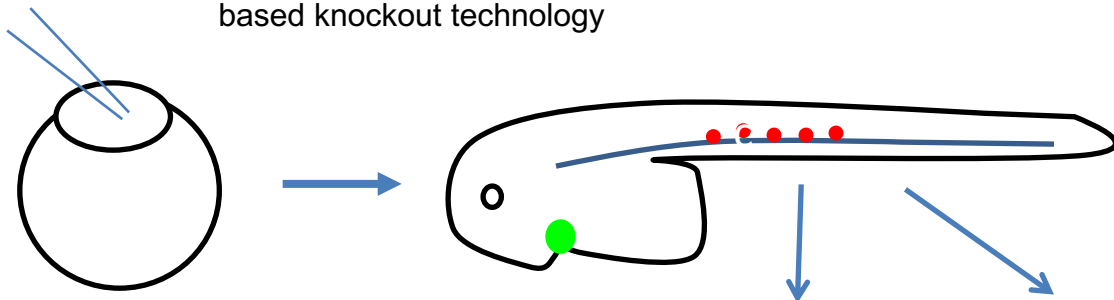
<i>foxc1a</i> gRNA target	5'-GGGTGGAAGGGATGCTGTG CGG -3'
<i>foxc1b</i> gRNA target	5'-GGCGGCATGGCTCGCGCAT AGG -3'
<i>ift88</i> gRNA target	5'-GGCTGACCGCTATGCAGAG CTGG -3'

B

pcmlc2:GFP;*U6*:gRNA;*fli*:Cas9 integratable vectors

C

Workflow for endothelial cell-specific CRISP-based knockout technology

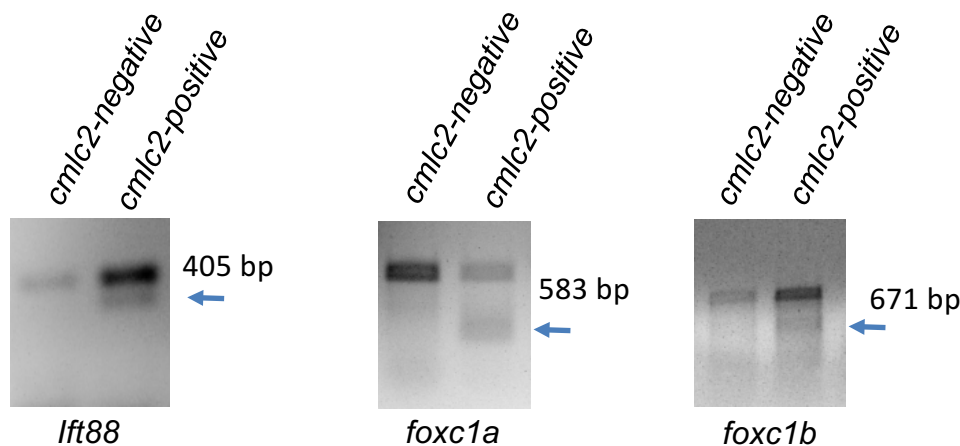


Injection of *pcmlc2*:GFP;*U6*:gRNA;*fli*:Cas9 integratable vectors with transposase mRNA into *Tg(acta2:mCherry)^{uto5}* lines.

Analyze vMCs around DA of the *cmlc2*:GFP positive embryos at 80hpf.

Genomic DNA extraction for genotyping using T7E1 assay *as control *cmlc2*:GFP negative embryos were used

D



E

Primers used for CRISPR plasmid construction

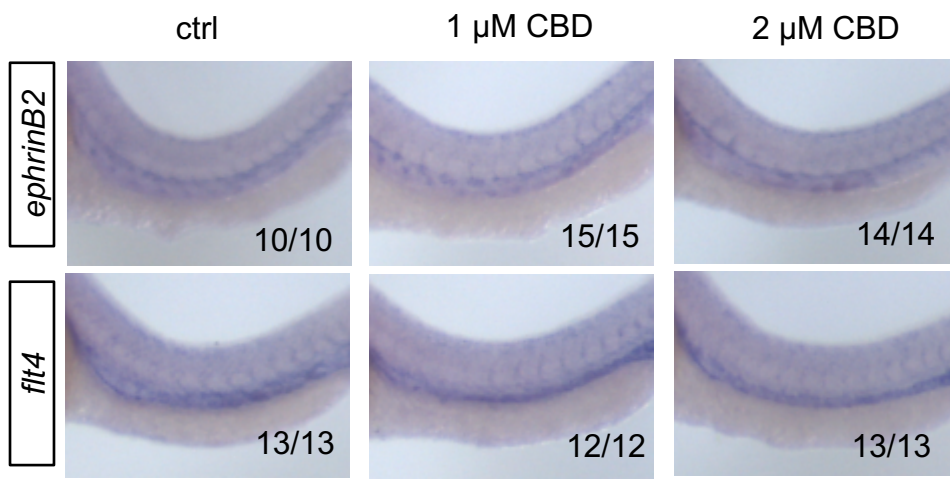
<i>foxc1a</i> -gRNA-For	5'-GGAGGACCGAGGTGTTAAAGgt-3'
<i>foxc1a</i> -gRNA-Rev	5'-CTTTAACACCTCGGTCCTCCga-3'
<i>foxc1b</i> -gRNA-For	5'-GGCGGCATGGCTCGCGCATAgt-3'
<i>foxc1b</i> -gRNA-Rev	5'-TATGCGCGAGCCATGCCGCCga-3'
<i>ift88</i> -gRNA-For	5'-GGCTGACCGCTATGCAGAGCgt-3'
<i>ift88</i> -gRNA-Rev	5'-GCTCTGCATAGCGGTCAGCCga-3'

F

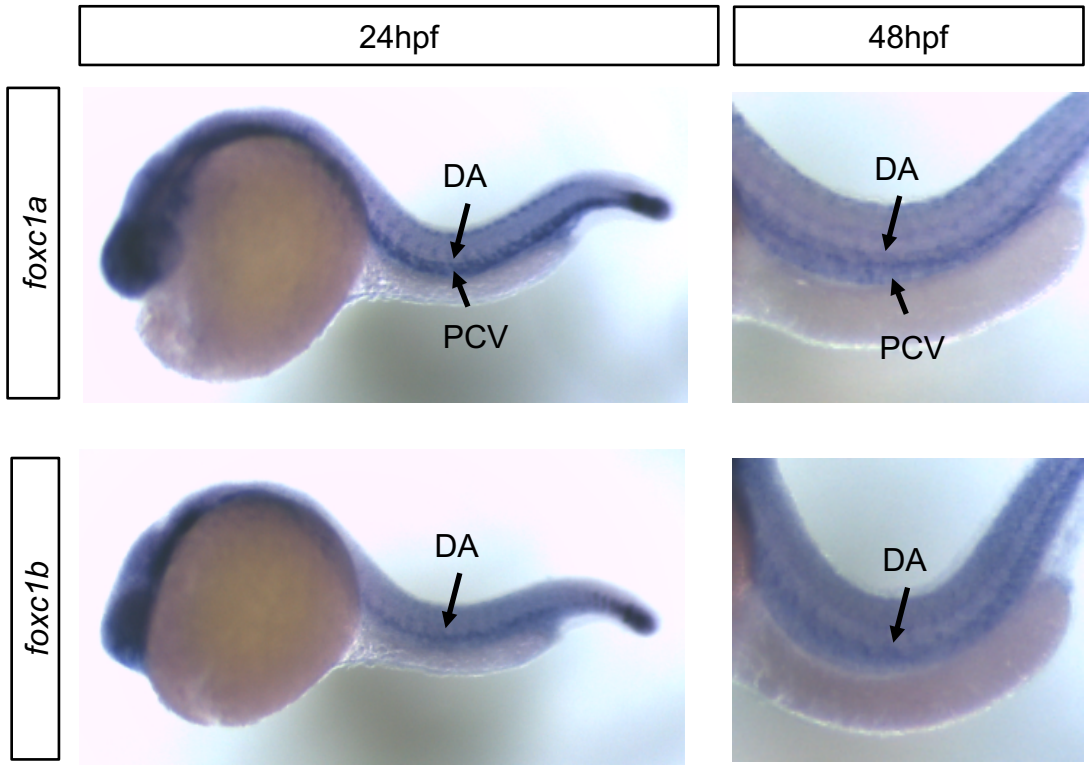
Primers used for T7E1 assay

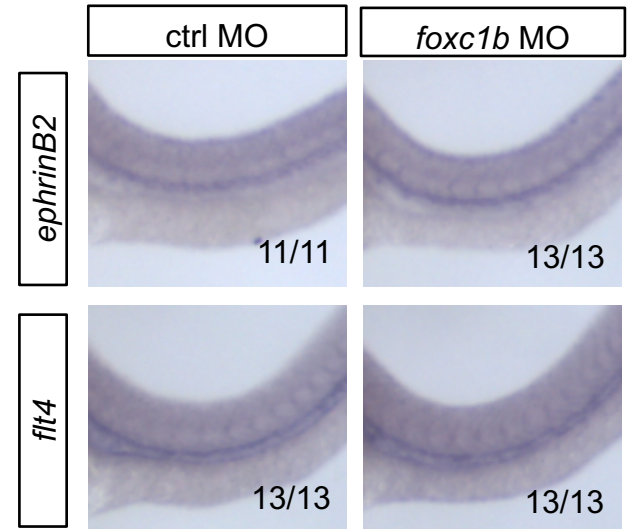
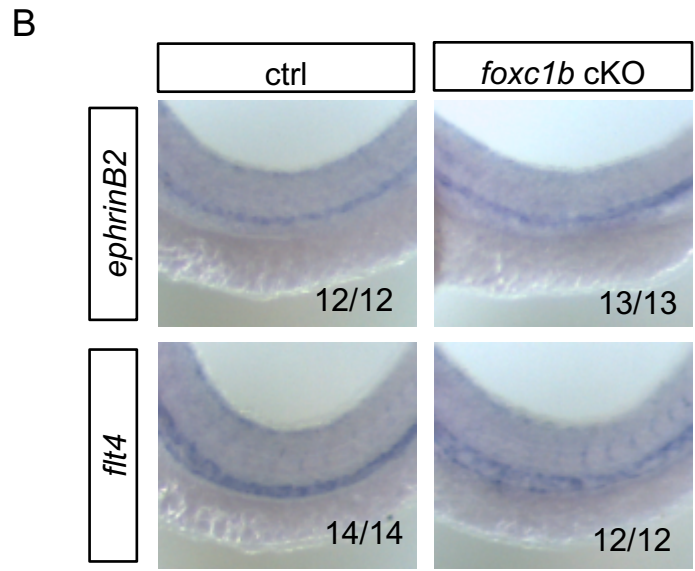
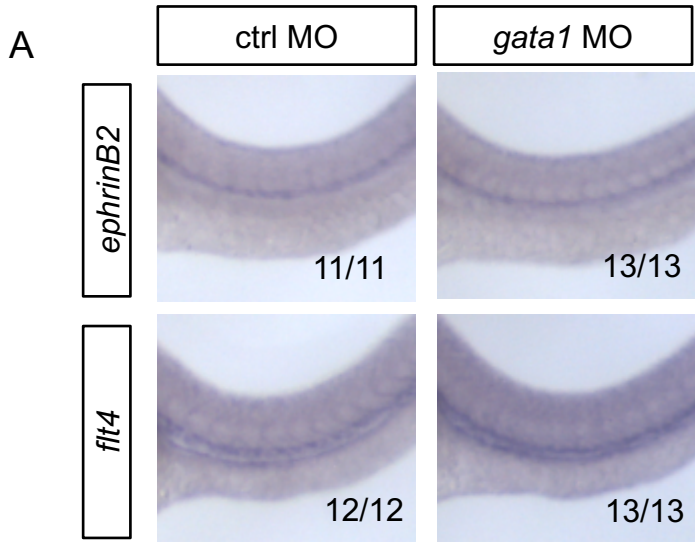
<i>foxc1a</i> -PCR-For	5'-CGGAAAAGGCAGCTACTGGA-3'
<i>foxc1a</i> -PCR-Rev	5'-GGTAGTCGAGATAGAGTACTGG-3'
<i>foxc1b</i> -PCR-For	5'-CCCTTTAGGCGTTGTGCCTTAT-3'
<i>foxc1b</i> -PCR-Rev	5'-TGTCTGGGCTCTCCGTTTTA-3'
<i>ift88</i> -PCR-For	5'-GTAATGGCTGCCAGTTTAC-3'
<i>ift88</i> -PCR-Rev	5'-TACGTCAAACCTGCATGATG-3'

A



A





A

