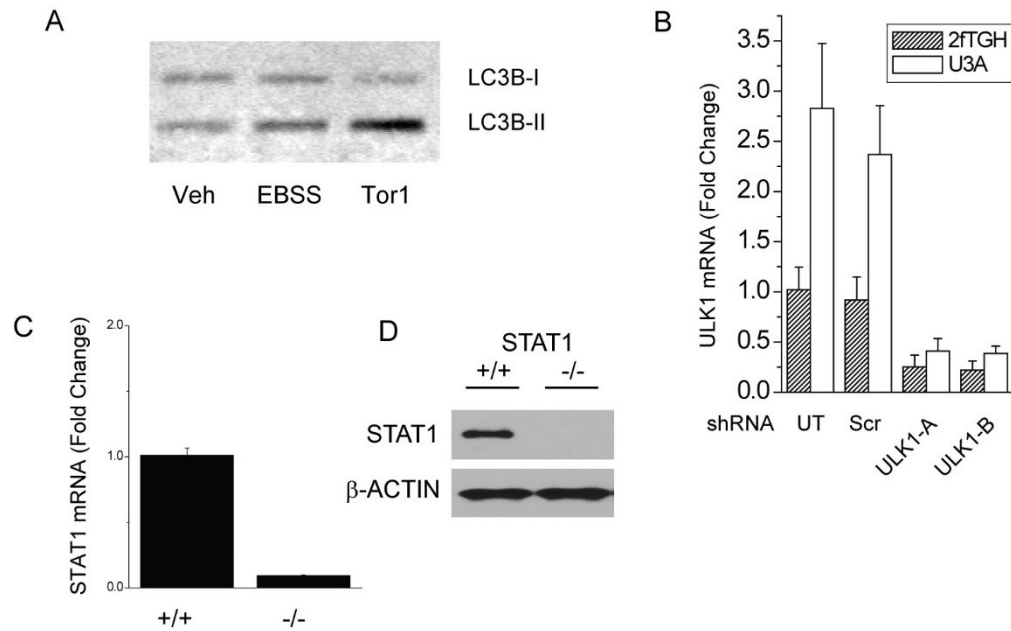


Supplemental Figure 1:



Supplemental Figure 1: **A.** 2fTGH cells were incubated with vehicle (Veh), Earle's balanced salt solution (EBSS) or 10 nM Torin-1 (Tor1) for 1 h before generation of cell lysates and western blot detection of LC3B. **B.** Untransduced (UT) 2fTGH or U3A cells, those transduced with scrambled (Scr) shRNA, or those transduced with shRNAs for the coding region (ULK1-A) or 3'-UTR (ULK1-B) were assessed for ULK1 mRNA by qPCR. Data are the means of fold increase in ULK1 mRNA from 3 individual experiments \pm SEM. **C.** and **D.** STAT1 +/+ or -/- mouse embryonic fibroblasts were interrogated for STAT1 mRNA and protein by qPCR and western blot, respectively.