

Supporting Information

A Preclinical Comparative Study of ^{68}Ga -labeled DOTA, NOTA and HBED-CC Chelated Radiotracers for Targeting PSMA

Sangeeta Ray Banerjee, Zhengping Chen, Mrudula Pullambhatla, Ronnie C. Mease, Martin G. Pomper

Russell H. Morgan Department of Radiology and Radiological Science, Johns Hopkins Medical Institutions, Baltimore, MD 21287

Corresponding Authors: Martin G. Pomper, M.D., Ph.D.

410-955-2789 (T)

443-817-0990 (F)

mpomper@jhmi.edu

Sangeeta Ray Banerjee, Ph.D.

410-955-8697 (T)

410-614-3147 (F)

sray9@jhmi.edu

Johns Hopkins Medical Institutions

1550 Orleans Street, 492 CRB II

Baltimore, MD 21231

TABLE OF CONTENTS

1. **Figure S1.** Comparison of PSMA+ PC3 PIP tumor-to-PSMA- PC3 flu tumor 3
2. Spectral and HPLC data 4-5

Figure S1. Comparison of PSMA+ PC3 PIP tumor-to-PSMA- PC3 flu tumor (A); PSMA+ PC3 PIP-to-kidney (B); PSMA+ PC3 PIP-to-salivary gland (C); and, PSMA+ PC3 PIP-to-blood (D) of $^{68}\text{Ga-1}$, $^{68}\text{Ga-2}$ and $^{68}\text{Ga-DKFZ-PSMA-11}$. (*, $P < 0.05$; **, $P < 0.001$; ***, $P < 0.0001$).

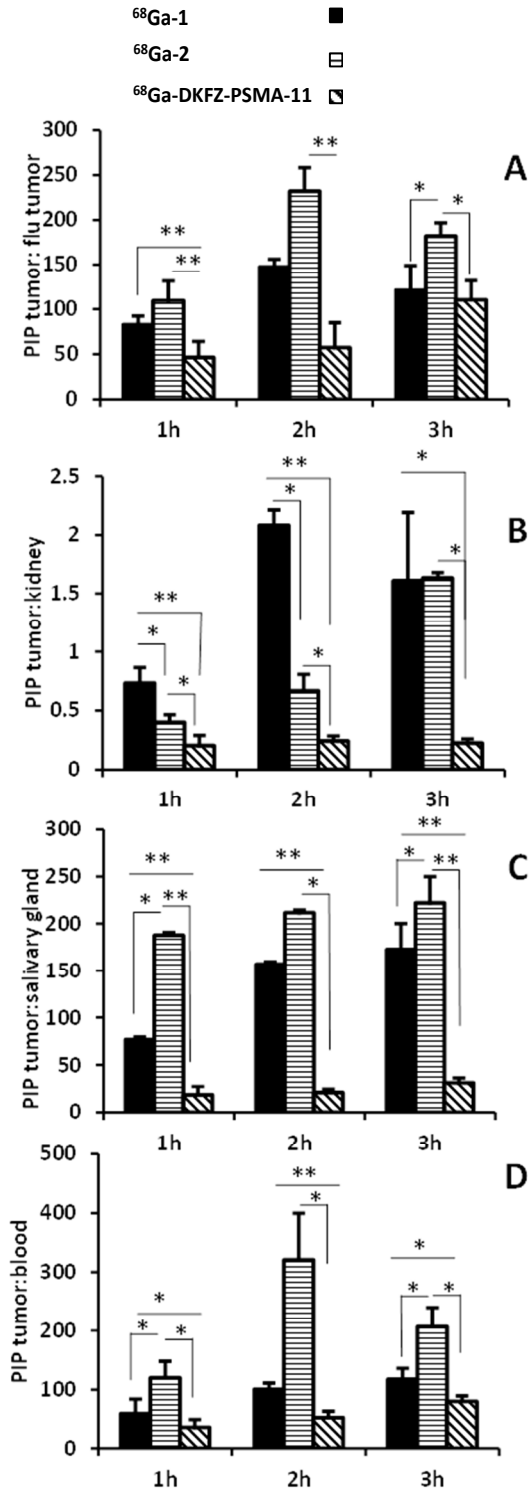


Figure S2. ^1H NMR of Ga-2 in DMSO at room temperature.

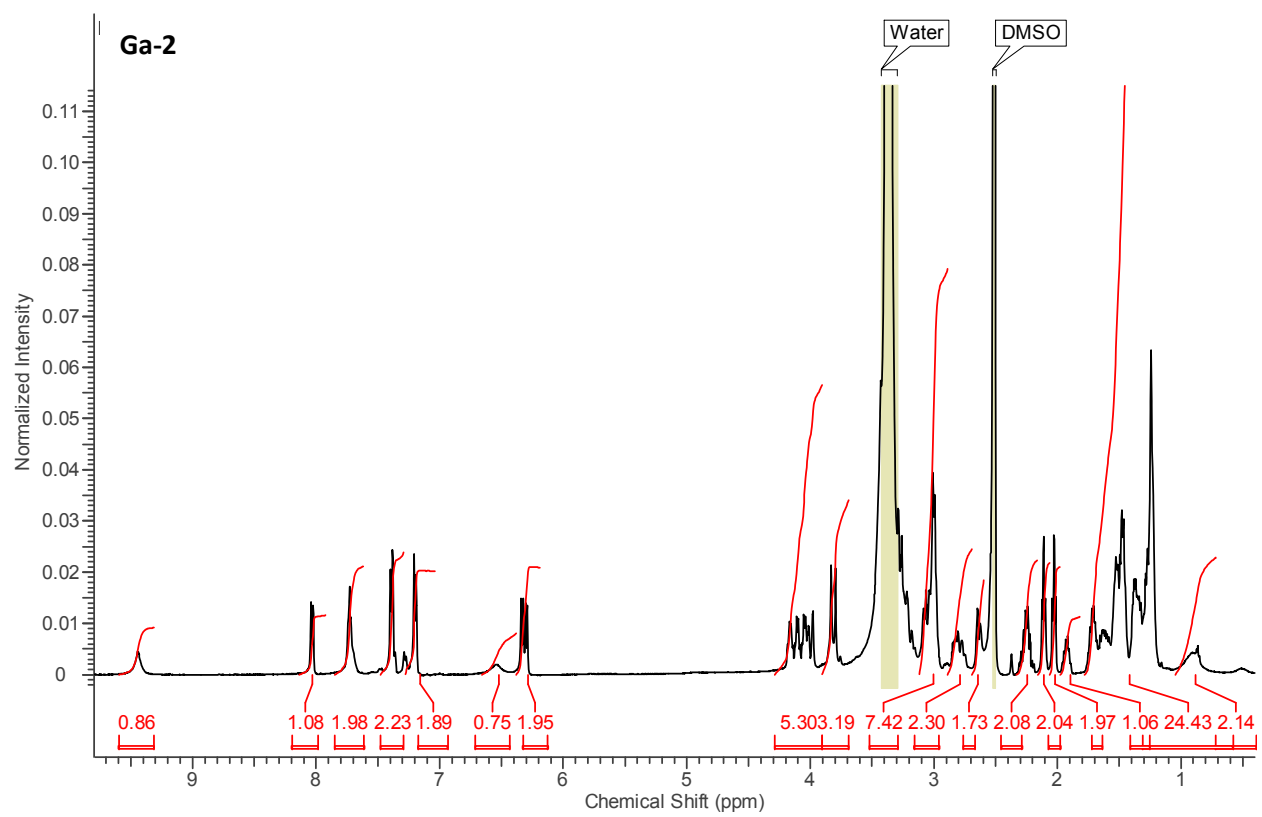


Figure S3. Preparative HPLC chromatograms of $^{68}\text{Ga-1}$ (top), $^{68}\text{Ga-2}$ (middle) and $^{68}\text{Ga-DKFZ-PSMA-11}$ (bottom) for radio-HPLC (left) and UV (right) peaks

