

**Supplemental Table 1. Characteristics of patients with and without subsequent cancer.**

Characteristics	Cancer				<i>p</i> value
	Yes (n = 1,077)		No (n =56,533)		
	<i>n</i>	%	<i>n</i>	%	
Age, years (mean ± SD)	59.63 ± 14.90		44.52 ± 16.67		
<65	673	62.5	49,287	87.2	<0.001
≥65	404	37.5	7,246	12.8	
Sex					
Female	591	54.9	32,234	57.0	0.162
Male	486	45.1	24,299	43.0	
Comorbidities					
TB contact	191	17.7	11,331	20.0	0.066
Diabetes mellitus	236	21.9	5,992	10.6	<0.001
Coronary heart disease	245	22.7	6,137	10.9	<0.001
Heart failure	42	3.9	948	1.7	<0.001
Cerebrovascular disease	158	14.7	3,961	7.0	<0.001
Hypertension	482	44.8	12,674	22.4	<0.001
SLE	30	2.8	756	1.3	<0.001
RA	37	3.4	892	1.6	<0.001
CKD/ESRD	111	10.3	2,701	4.8	<0.001
Liver cirrhosis	131	12.2	2,676	4.7	<0.001
Asthma	217	20.1	8,110	14.3	<0.001
COPD	8189	17.5	4,567	8.1	<0.001
NTM	5	0.5	166	0.3	0.257
Income Level					<0.001
Low	450	41.8	20,153	35.6	
Intermediate	473	43.9	25,485	45.1	
High	154	14.3	10,895	19.3	

Abbreviations: SD, standard deviation; SLE, systemic lupus erythematosus; RA, rheumatoid arthritis; CKD, chronic renal disease; ESRD, end-stage renal disease; GERD, gastro-esophageal reflux disease; COPD, chronic obstructive pulmonary disease; NTM, nontuberculous mycobacteria.

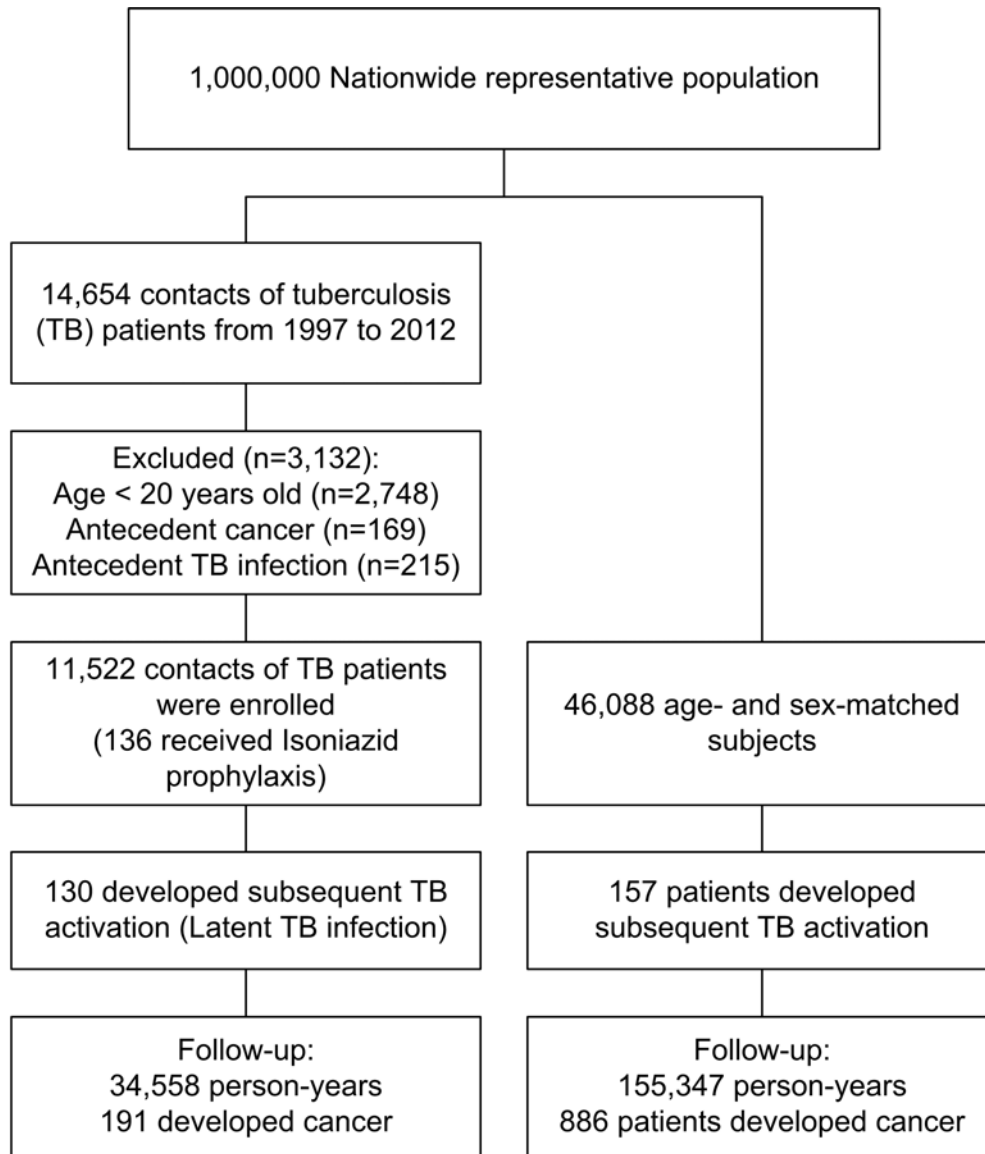
**Supplemental Table 2. Predictors of cancer in Cox proportional hazards regression analysis**

Variables	Unadjusted		Adjusted*	
	HR (95% CI)	<i>p</i>	HR (95% CI)	<i>p</i>
TB contact	0.97 (0.83–1.14)	0.714		
Age ≥ 65 years	4.15 (3.67–4.70)	<0.001	3.00 (2.55–3.53)	<0.001
Male gender	1.16 (1.03–1.31)	0.017	1.23 (1.09–1.39)	0.001
Comorbidities				
Diabetes mellitus	2.44 (2.11–2.82)	<0.001	1.24 (1.05–1.45)	0.012
Coronary heart disease	2.44 (2.12–2.81)	<0.001	1.00 (0.84–1.19)	0.983
Heart failure	2.81 (2.06–3.82)	<0.001	1.00 (0.72–1.38)	0.977
Cerebrovascular disease	2.41 (2.04–2.85)	<0.001	0.90 (0.74–1.09)	0.288
Hypertension	2.82 (2.50–3.18)	<0.001	1.46 (1.25–1.72)	<0.001
SLE	2.34 (1.62–3.36)	<0.001	1.76 (1.22–2.55)	0.003
RA	2.20 (1.58–3.05)	<0.001	1.28 (0.92–1.79)	0.148
CKD/ESRD	2.37 (1.95–2.89)	<0.001	1.18 (0.96–1.46)	0.119
Liver cirrhosis	2.52 (2.10–3.02)	<0.001	1.75 (1.45–2.12)	<0.001
Asthma	1.55 (1.33–1.80)	<0.001	0.99 (0.84–1.16)	0.875
COPD	2.38 (2.04–2.79)	<0.001	1.15 (0.96–1.38)	0.141
NTM	1.87 (0.78–4.51)	0.162		
Income level				
Low	Referent		Referent	
Intermediate	0.90 (0.79–1.02)	0.098	1.12 (0.98–1.28)	0.085
High	0.82 (0.75–0.90)	<0.001	0.96 (0.79–1.16)	0.671

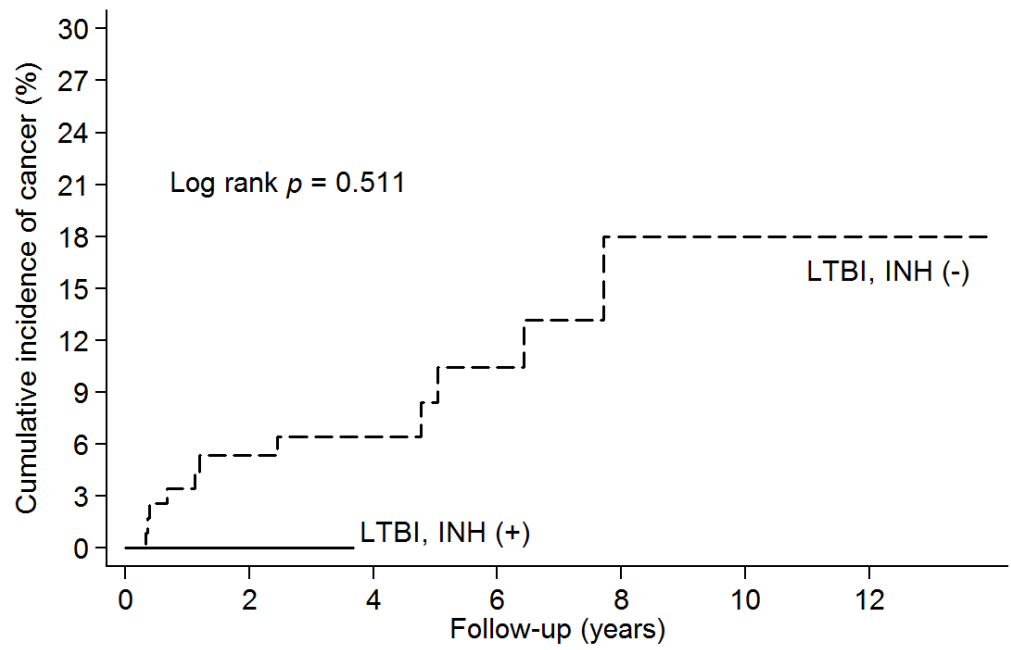
Abbreviations: SD, standard deviation; SLE, systemic lupus erythematosus; RA, rheumatoid arthritis; CKD, chronic renal disease; ESRD, end-stage renal disease; GERD, gastroesophageal reflux disease; COPD, chronic obstructive pulmonary disease; NTM, nontuberculous mycobacteria.

\* All factors with  $p < 0.1$  in univariate analyses were included in the Cox multivariate analysis.

Supplemental Figure 1 Flow diagram summarizing the process of enrollment and follow-up.



Supplemental Figure 2 Cumulative incidence of cancer in latent tuberculosis infection (LTBI) patients with and without isoniazid (INH) prophylaxis



Number at risk

LTBI, INH (-)	121	87	63	36	15	5	2
LTBI, INH (+)	9	2	0	0	0	0	0