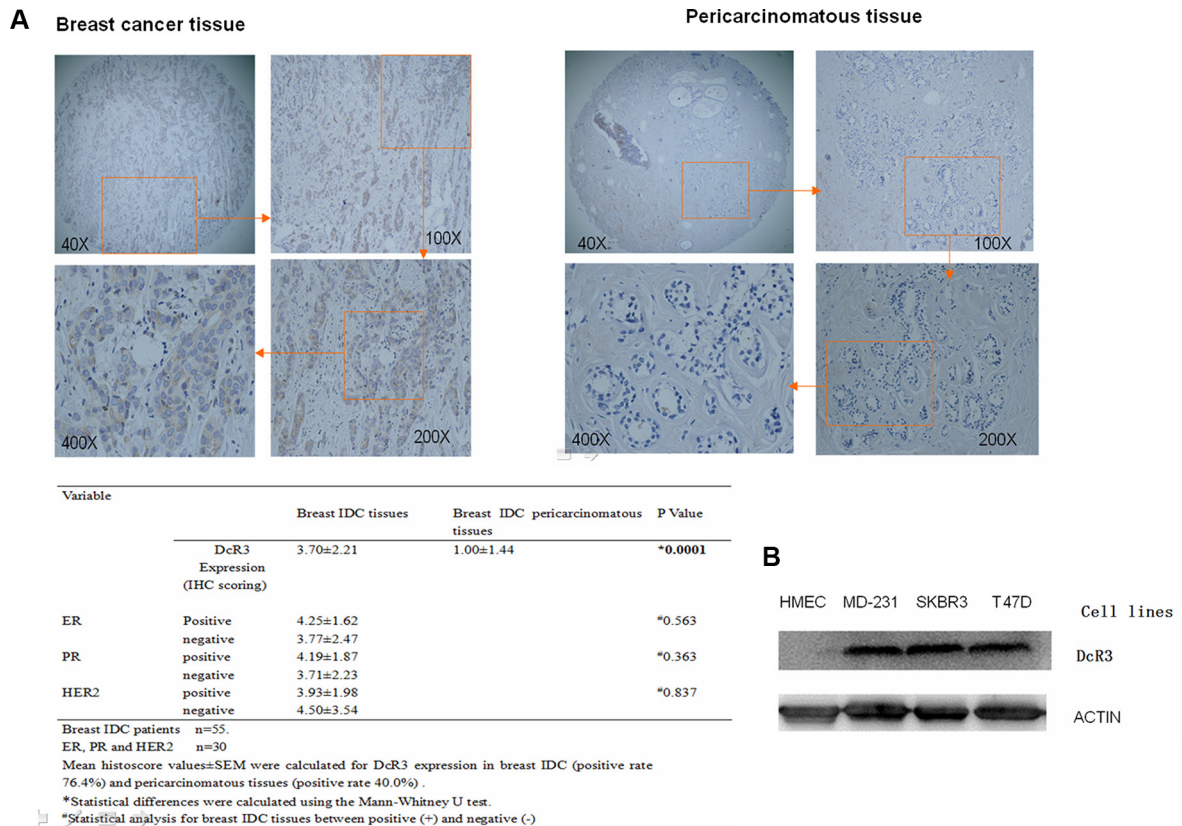


DcR3 gene polymorphisms are associated with sporadic breast infiltrating ductal carcinoma in Northeast Chinese women

Supplementary Materials



Supplemental Figure S1: Evaluation of DcR3 expression in breast cancer. DcR3 was detected in paraffin-embedded tissue sections using IHC analysis (A). IHC staining scores are reported as means ± SE. The Mann-Whitney *U* test was used to analyze *DcR3* expression differences between IDC and pericarcinomatous (PC) tissues (3.70 ± 2.21 to 1.00 ± 1.44). $P = 0.0001$. DcR3 was detected in HMEC and breast cancer cell lines via western blotting (B). DcR3 is overexpressed in breast cancer cell lines as compared to HMECs. Experiments were repeated 4 times.