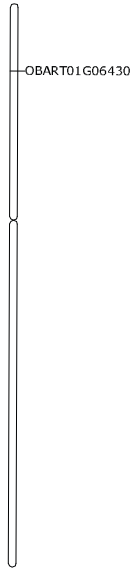


Chr 1

O. barthii

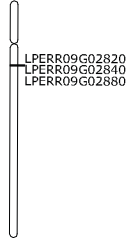


O. nivara

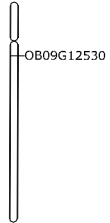


Chr 9

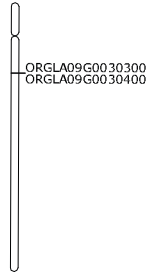
L. perrieri



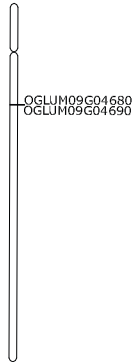
O. brachyantha



O. glaberrima



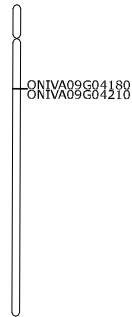
O. glumaepatula



O. meridionalis



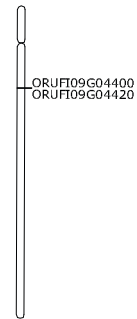
O. nivara



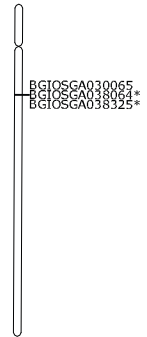
O. punctata



O. rufipogon



O. sativa subsp. *indica*



O. sativa subsp. *japonica*



* Scaffold not anchored to Chr 9