

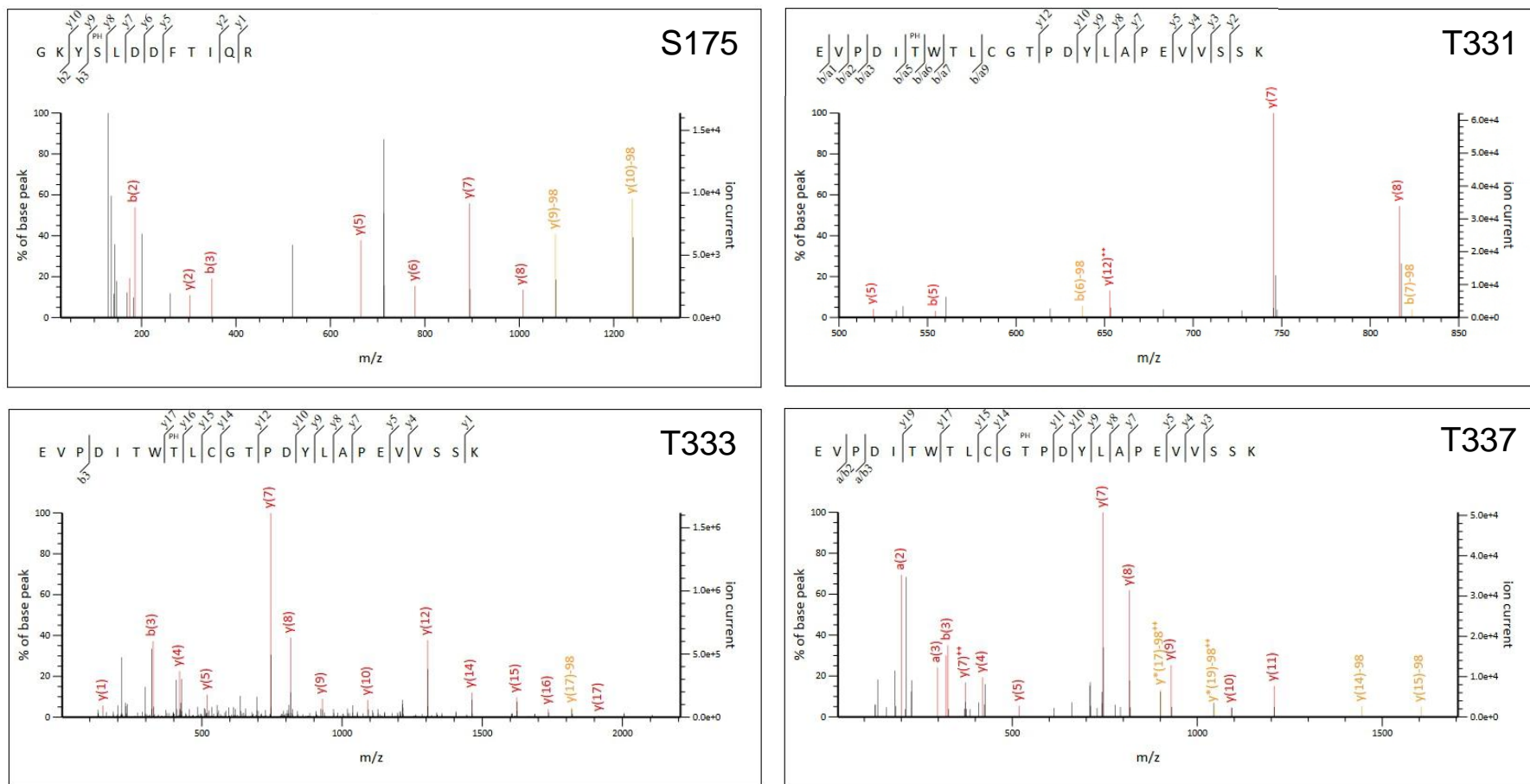
Figure S1

Figure S1. Spectra indicating phosphorylation at specific PkaC1 residues. Tandem mass spectra of GKY[pS]LDDFTIQR and EVPDI[pT]W[pT]LCG[pT]PDYLAP from PkaC1 reveal four unique phosphorylated residues including one serine (S175) and three threonines (T331, T333 and T337) in close proximity. The presence of each identified C-terminal (y) and N-terminal (b) product ions are indicated within the peptide sequence. Peaks indicating phosphorylation are represented in yellow.