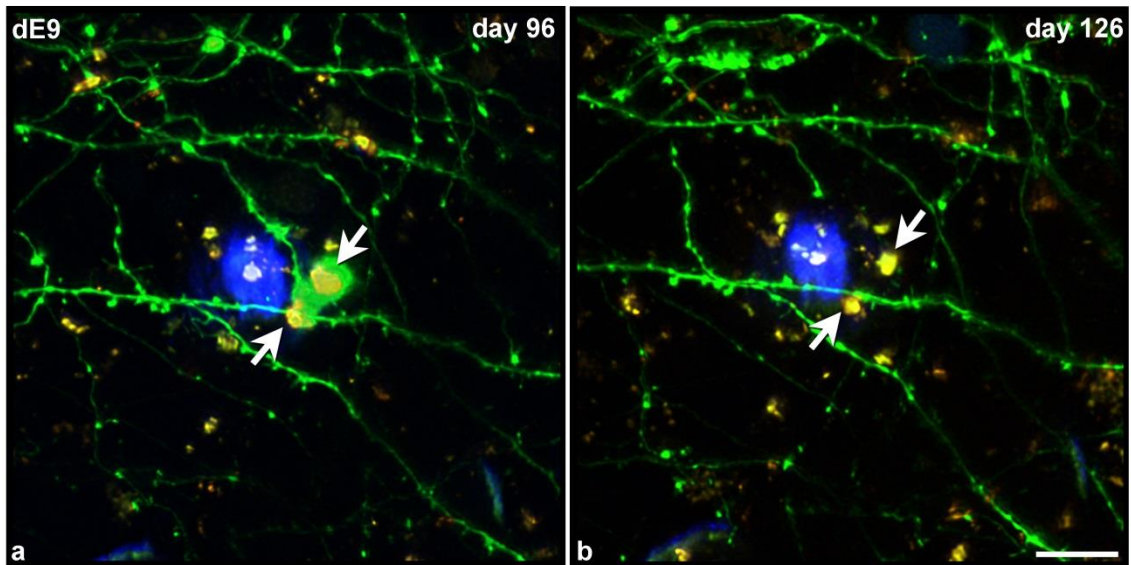


SUPPLEMENTARY FIGURE 6

## High plasticity of axonal pathology in Alzheimer's disease mouse models

Lidia Blazquez-Llorca<sup>a+,\*</sup>, Susana Valero-Freitag<sup>a+,\*</sup>, Eva Ferreira Rodrigues<sup>a</sup>, Ángel Merchán-Pérez<sup>b,c</sup>, J. Rodrigo Rodríguez<sup>b,d</sup>, Mario M. Dorostkar<sup>a</sup>, Javier DeFelipe<sup>b,d,e</sup> and Jochen Herms<sup>a,f,\*</sup>



**Supplementary Fig. 6 Behavior of auto-fluorescent spots after the elimination of an AxD.** (a, b), Maximum projection of a stack of images (40 images; z-step: 1  $\mu\text{m}$ ) taken with the two-photon microscope in the supragranular layers of the somatosensory cortex of the dE9 mouse at two different time points, showing some neurites expressing GFP around an  $\text{A}\beta$  plaque stained with Methoxy-X04 (blue). This AxD is the same one showed in Fig. 4. It can be observed that the auto-fluorescence (yellow spots) inside the GFP-expressing AxD (in a) remains at the same location after the loss of the AxD (in b). The arrows point out the region of interest. Scale bar (in b): 12.4  $\mu\text{m}$  in a, b