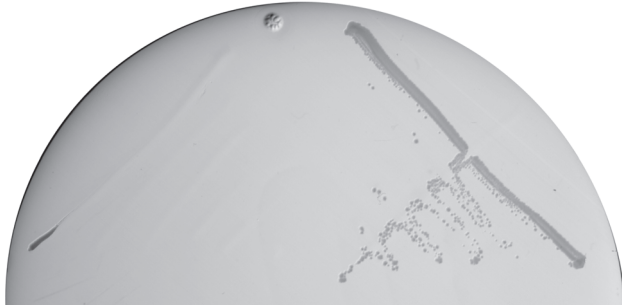


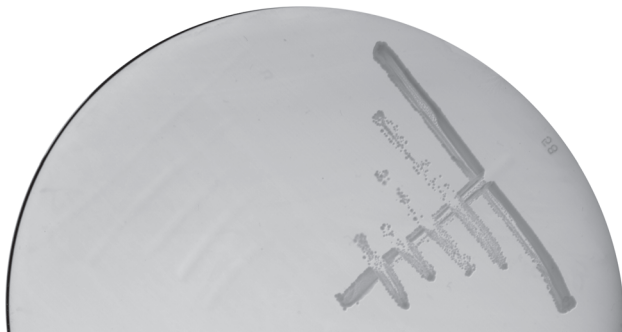
$\Delta atpA \Delta hda \Delta cydB$

$\Delta atpA \Delta hda$



$\Delta atpB \Delta hda \Delta cydB$

$\Delta atpB \Delta hda$



$iscUC63F \Delta cydB \Delta hda$

$iscUC63F \Delta hda$



S4 Fig. Cytochrome bd-1 function is required for *atpA*, *atpB* and *iscUC63F* survival in absence of *hda*. The *hda::cat* mutation was introduced into the indicated strains under anaerobic conditions, restreaked on LB agar and incubated aerobically.