

GDF11 administration does not extend lifespan in a mouse model of premature aging

Supplementary Material

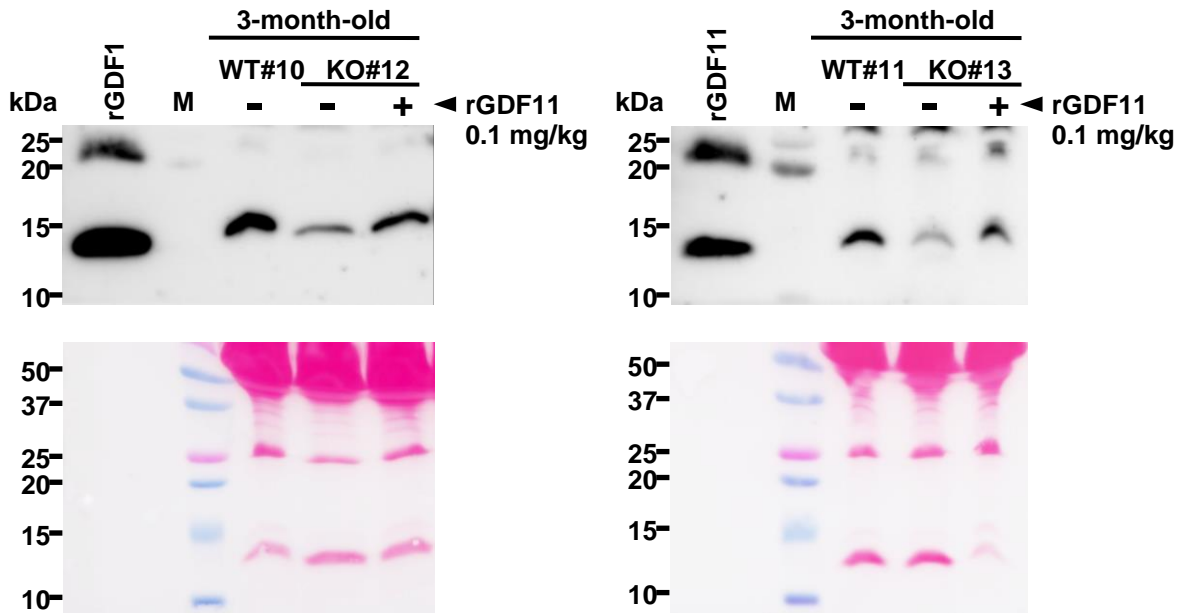


Figure S1. rGDF11 intraperitoneal administration increases GDF11/8 plasma levels in *Zmpste24*^{-/-} mice. GDF11/8 plasma levels of 3-month-old *Zmpste24*^{-/-} mice were evaluated by western-blot analysis before and 2 hours after a single intraperitoneal injection of 0.1 mg/kg of rGDF11. GDF11/8 plasma levels of wild-type littermate mice are shown as a reference. 2 ng of rGDF11 loaded as a positive control. Ponceau S stained membranes of the corresponding western-blot are shown to demonstrate equivalent loading (bottom). # indicates mouse number. M indicates molecular weight marker.